

# NEBRASKA OECD TRACTOR TEST 1882 - SUMMARY 539

## McCORMICK XTX 215 DIESEL

### 32 SPEED

#### POWER TAKE-OFF PERFORMANCE

| Power<br>HP<br>(kW)                             | Crank<br>shaft<br>speed<br>rpm | Gal/hr<br>(l/h)  | lb/hp.hr<br>(kg/kW.h) | Hp.hr/gal<br>(kW.h/l) | Mean Atmospheric<br>Conditions |
|---|--------------------------------|------------------|-----------------------|-----------------------|--------------------------------|
| <b>MAXIMUM POWER AND FUEL CONSUMPTION</b>       |                                |                  |                       |                       |                                |
| <b>Rated Engine Speed—(PTO speed—1087 rpm)</b>  |                                |                  |                       |                       |                                |
| 189.53<br>(141.33)                              | 2201                           | 11.03<br>(41.76) | 0.407<br>(0.247)      | 17.18<br>(3.38)       |                                |
| <b>Standard Power Take-off Speed—(1000 rpm)</b> |                                |                  |                       |                       |                                |
| 203.85<br>(152.01)                              | 2025                           | 11.29<br>(42.76) | 0.387<br>(0.236)      | 18.05<br>(3.56)       |                                |
| <b>Maximum Power (1 hour)</b>                   |                                |                  |                       |                       |                                |
| 205.58<br>(153.30)                              | 2000                           | 11.33<br>(42.89) | 0.385<br>(0.234)      | 18.14<br>(3.57)       |                                |

#### VARYING POWER AND FUEL CONSUMPTION

|                    |      |                  |                  |                 |                       |
|--------------------|------|------------------|------------------|-----------------|-----------------------|
| 189.53<br>(141.33) | 2201 | 11.03<br>(41.76) | 0.407<br>(0.247) | 17.18<br>(3.38) | Air temperature       |
| 168.22<br>(125.44) | 2299 | 10.46<br>(39.59) | 0.435<br>(0.264) | 16.09<br>(3.17) | 77°F (25°C)           |
| 125.99<br>(93.95)  | 2299 | 8.30<br>(31.41)  | 0.460<br>(0.280) | 15.18<br>(2.99) | Relative humidity     |
| 84.19<br>(62.78)   | 2299 | 6.09<br>(23.07)  | 0.506<br>(0.308) | 13.81<br>(2.72) | 52%                   |
| 42.61<br>(31.77)   | 2299 | 3.98<br>(15.05)  | 0.652<br>(0.397) | 10.71<br>(2.11) | Barometer             |
| 1.62<br>(1.21)     | 2299 | 2.07<br>(7.85)   | 8.938<br>(5.437) | 0.78<br>(0.15)  | 28.98" Hg (98.14 kPa) |

Maximum Torque - 651 lb.-ft. (883 Nm) at 1400 rpm  
 Maximum Torque Rise - 43.9%  
 Torque rise at 1751 engine rpm - 34%

#### DRAWBAR PERFORMANCE

(Unballasted - Front Drive Engaged)

#### FUEL CONSUMPTION CHARACTERISTICS

| Power<br>Hp<br>(kW)                                       | Drawbar<br>pull<br>lbs<br>(kN) | Speed<br>mph<br>(km/h) | Crank-<br>shaft<br>speed<br>rpm | Slip<br>% | Fuel Consumption<br>lb/hp.hr<br>(kg/kW.h) | Hp.hr/gal<br>(kW.h/l) | Temp. °F (°C)<br>cool-<br>ing<br>med | Air<br>dry<br>bulb | Barom.<br>inch<br>Hg<br>(kPa) |
|---|--------------------------------|------------------------|---------------------------------|-----------|---|-----------------------|--------------------------------------|--------------------|-------------------------------|
| <b>Maximum Power—16th(3-2) Gear</b>                       |                                |                        |                                 |           |   |                       |                                      |                    |                               |
| 155.27<br>(115.78)  | 10673<br>(47.48)               | 5.46<br>(8.78)         | 2199                            | 4.00      | 0.460<br>(0.280)                          | 15.18<br>(2.99)       | 180<br>(82)                          | 63<br>(17)         | 28.97<br>(98.10)              |
| <b>75% of Pull at Maximum Power—16th(3-2) Gear</b>        |                                |                        |                                 |           |   |                       |                                      |                    |                               |
| 123.06<br>(91.77)   | 7991<br>(35.55)                | 5.77<br>(9.29)         | 2299                            | 2.75      | 0.518<br>(0.315)                          | 13.49<br>(2.66)       | 178<br>(81)                          | 64<br>(18)         | 28.97<br>(98.10)              |
| <b>50% of Pull at Maximum Power—16th(3-2) Gear</b>        |                                |                        |                                 |           |   |                       |                                      |                    |                               |
| 82.92<br>(61.84)  | 5328<br>(23.70)                | 5.84<br>(9.39)         | 2298                            | 1.74      | 0.569<br>(0.346)                          | 12.29<br>(2.42)       | 171<br>(77)                          | 65<br>(18)         | 28.98<br>(98.14)              |
| <b>75% of Pull at Reduced Engine Speed—20th(3-4) Gear</b> |                                |                        |                                 |           |   |                       |                                      |                    |                               |
| 123.11<br>(91.80)   | 7954<br>(35.38)                | 5.80<br>(9.34)         | 1679                            | 2.66      | 0.433<br>(0.264)                          | 16.13<br>(3.18)       | 167<br>(75)                          | 66<br>(19)         | 29.00<br>(98.21)              |
| <b>50% of Pull at Reduced Engine Speed—20th(3-4) Gear</b> |                                |                        |                                 |           |   |                       |                                      |                    |                               |
| 83.01<br>(61.90)  | 5311<br>(23.62)                | 5.86<br>(9.43)         | 1679                            | 1.72      | 0.478<br>(0.291)                          | 14.62<br>(2.88)       | 161<br>(72)                          | 65<br>(18)         | 28.99<br>(98.17)              |

**Location of tests:** Nebraska Tractor Test Laboratory, University of Nebraska, Lincoln Nebraska, USA 68583-0832

**Dates of tests:** June 8 - 15, 2006

**Manufacturer:** McCormick Tractors Intr. Ltd., Doncaster, South Yorkshire, DN2 4PG, England

**FUEL and OIL:** Fuel No. 2 Diesel Specific gravity converted to 60°/60°F (15°/15°C) 0.8395 Fuel weight 6.990 lbs/gal (0.838 kg/l) Oil SAE 15W40 API service classification CG-4 Transmission and hydraulic lubricant McCormick HTX fluid Front axle lubricant API GL5 SAE 85W140 Total time engine was operated 23.0 hours

**ENGINE:** Make Iveco Diesel Type six cylinder vertical with turbocharger and air to air intercooler Serial No. \*J100\*001913\* Crankshaft lengthwise Rated engine speed 2200 Bore and stroke 4.094" x 5.197" (104.0 mm x 132.0 mm) Compression ratio 17.5 to 1 Displacement 410 cu in (6728 ml) Starting system 12 volt Lubrication pressure Air cleaner two paper elements and aspirator Oil filter two full flow cartridges Oil cooler engine coolant heat exchanger for crankcase oil, radiator for hydraulic and transmission oil Fuel filter one paper element Muffler vertical Cooling medium temperature control thermostat and variable speed fan

**ENGINE OPERATING PARAMETERS:** Fuel rate: 74.9 - 79.4 lb/h (34.0 - 36.0 kg/h) High idle: 2275 - 2325 rpm Turbo boost: nominal 21.6 - 23.6 psi (149 - 163 kPa) as measured 22.7 psi (157 kPa)

**CHASSIS:** Type front wheel assist Serial No. \*XT85AC4JJE3500599\* Tread width rear 64.2" (1630 mm) to 125.0" (3175 mm) front 60.2" (1530 mm) to 87.8" (2230 mm) Wheelbase 113.1" (2873 mm) Hydraulic control system direct engine drive Transmission selective gear fixed ratio with partial (8) range operator controlled powershift Nominal travel speeds mph (km/h) first 1.12 (1.80) second 1.32 (2.12) third 1.54 (2.48) fourth 1.81 (2.91) fifth 2.14 (3.44) sixth 2.40 (3.87) seventh 2.51 (4.04) eighth 2.82 (4.54) ninth 2.95 (4.74) tenth 3.31 (5.32) eleventh 3.45 (5.55) twelfth 3.87 (6.23) thirteenth 4.59 (7.38) fourteenth 4.81 (7.74) fifteenth 5.38 (8.66) sixteenth 5.64 (9.08) seventeenth 6.31 (10.16) eighteenth 6.61 (10.64) nineteenth 7.39 (11.90) twentieth 7.75 (12.47) twenty-first 9.18 (14.77) twenty-second 10.07 (16.20) twenty-third 10.77 (17.33) twenty-fourth 11.81 (19.01) twenty-fifth 12.63 (20.32) twenty-sixth 13.85 (22.29) twenty-seventh 14.80 (23.81)

## DRAWBAR PERFORMANCE

### (Unballasted - Front Drive Engaged) MAXIMUM POWER IN SELECTED GEARS

| Power<br>Hp<br>(kW) | Drawbar<br>pull<br>lbs<br>(kN) | Speed<br>mph<br>(km/h) | Crank-<br>shaft<br>speed<br>rpm | Slip<br>% | Fuel Consumption<br>lb/hp.hr<br>(kg/kW.h) | Consumption<br>Hp.hr/gal<br>(kW.h/l) | Temp. °F(°C)<br>cool-<br>ing<br>med | Air<br>dry<br>bulb | Barom.<br>inch<br>Hg<br>(kPa) |
|---------------------|--------------------------------|------------------------|---------------------------------|-----------|---|--------------------------------------|-------------------------------------|--------------------|-------------------------------|
| 11th(1-8) Gear      |                                |                        |                                 |           |   |                                      |                                     |                    |                               |
| 132.83<br>(99.05)   | 15648<br>(69.60)               | 3.18<br>(5.12)         | 2296                            | 12.52     | 0.533<br>(0.324)                          | 13.12<br>(2.58)                      | 171<br>(77)                         | 61<br>(16)         | 28.97<br>(98.10)              |
| 12th(2-4) Gear      |                                |                        |                                 |           |   |                                      |                                     |                    |                               |
| 145.18<br>(108.26)  | 14688<br>(65.34)               | 3.71<br>(5.96)         | 2266                            | 8.07      | 0.491<br>(0.299)                          | 14.24<br>(2.81)                      | 174<br>(79)                         | 61<br>(16)         | 28.97<br>(98.10)              |
| 13th(2-5) Gear      |                                |                        |                                 |           |   |                                      |                                     |                    |                               |
| 150.52<br>(112.25)  | 13894<br>(61.80)               | 4.06<br>(6.54)         | 2090                            | 7.67      | 0.479<br>(0.291)                          | 14.60<br>(2.88)                      | 180<br>(82)                         | 77<br>(25)         | 28.78<br>(97.46)              |
| 14th(3-1) Gear      |                                |                        |                                 |           |   |                                      |                                     |                    |                               |
| 153.14<br>(114.20)  | 13642<br>(60.68)               | 4.21<br>(6.77)         | 2065                            | 7.43      | 0.475<br>(0.289)                          | 14.72<br>(2.90)                      | 179<br>(82)                         | 79<br>(26)         | 28.77<br>(97.43)              |
| 15th(2-6) Gear      |                                |                        |                                 |           |   |                                      |                                     |                    |                               |
| 160.22<br>(119.48)  | 13523<br>(60.16)               | 4.44<br>(7.15)         | 1940                            | 7.08      | 0.463<br>(0.282)                          | 15.10<br>(2.98)                      | 182<br>(83)                         | 78<br>(26)         | 28.77<br>(97.43)              |
| 16th(3-2) Gear      |                                |                        |                                 |           |   |                                      |                                     |                    |                               |
| 163.91<br>(122.23)  | 13391<br>(59.56)               | 4.59<br>(7.39)         | 1912                            | 7.04      | 0.456<br>(0.277)                          | 15.33<br>(3.02)                      | 183<br>(84)                         | 80<br>(27)         | 28.76<br>(97.39)              |
| 17th(2-7) Gear      |                                |                        |                                 |           |   |                                      |                                     |                    |                               |
| 165.62<br>(123.50)  | 11928<br>(53.06)               | 5.21<br>(8.38)         | 1900                            | 5.24      | 0.452<br>(0.275)                          | 15.46<br>(3.05)                      | 184<br>(85)                         | 79<br>(26)         | 28.77<br>(97.43)              |
| 18th(3-3) Gear      |                                |                        |                                 |           |   |                                      |                                     |                    |                               |
| 166.72<br>(124.32)  | 11420<br>(50.80)               | 5.47<br>(8.81)         | 1902                            | 5.01      | 0.449<br>(0.273)                          | 15.56<br>(3.07)                      | 185<br>(85)                         | 80<br>(27)         | 28.76<br>(97.39)              |
| 19th(2-8) Gear      |                                |                        |                                 |           |   |                                      |                                     |                    |                               |
| 167.89<br>(125.19)  | 10217<br>(45.45)               | 6.16<br>(9.92)         | 1897                            | 4.13      | 0.446<br>(0.271)                          | 15.66<br>(3.09)                      | 186<br>(85)                         | 82<br>(28)         | 28.75<br>(97.36)              |
| 20th(3-4) Gear      |                                |                        |                                 |           |   |                                      |                                     |                    |                               |
| 168.18<br>(125.41)  | 9720<br>(43.24)                | 6.49<br>(10.44)        | 1901                            | 3.85      | 0.448<br>(0.273)                          | 15.59<br>(3.07)                      | 187<br>(86)                         | 81<br>(27)         | 28.75<br>(97.36)              |
| 21st(3-5) Gear      |                                |                        |                                 |           |   |                                      |                                     |                    |                               |
| 169.13<br>(126.12)  | 8190<br>(36.43)                | 7.74<br>(12.46)        | 1898                            | 2.94      | 0.445<br>(0.271)                          | 15.71<br>(3.09)                      | 187<br>(86)                         | 81<br>(27)         | 28.75<br>(97.36)              |
| 22nd(4-1) Gear      |                                |                        |                                 |           |   |                                      |                                     |                    |                               |
| 165.94<br>(123.74)  | 7305<br>(32.49)                | 8.52<br>(13.71)        | 1901                            | 2.57      | 0.450<br>(0.274)                          | 15.53<br>(3.06)                      | 188<br>(87)                         | 83<br>(28)         | 28.74<br>(97.33)              |

twenty-eighth 16.23 (26.12) twenty-ninth 19.22 (30.93) thirtieth 22.55 (36.29) thirty-first 25.84 (41.58) thirty-second 25.91 (41.70)(1900 RPM) reverse 1.35 (2.17), 1.58 (2.55), 1.86 (2.99), 2.17 (3.50), 2.58 (4.15), 2.90 (4.66), 3.03 (4.87), 3.39 (5.46), 3.55 (5.71), 3.98 (6.41), 4.16 (6.69), 4.67 (7.51) 5.52 (8.89), 5.79 (9.32), 6.48 (10.43), 6.79 (10.93), 7.60 (12.23), 7.97 (12.82), 8.90 (14.33), 9.33 (15.02), 11.05 (17.78), 12.96 (20.86), 15.21 (24.47), 17.82 (28.67) **Clutch** multiple wet disc electro-hydraulically operated by foot pedal **Brakes** multiple wet disc hydraulically operated by two foot pedals that can be locked together **Steering** hydrostatic **Power take-off** 540 rpm at 1860 engine rpm or 1000 rpm at 2025 engine rpm **Unladen tractor mass** 16010 lb (7262 kg)

**NOTE 1:** The engine of the McCormick XTX 215 is electronically controlled to provide two power levels. A "boosted" power level is available when the PTO is engaged, under load.

**NOTE 2:** The performance figures on this report are the result of replacing the electronic engine control module of the McCormick XTX185 with the XTX215 module.

**REPAIRS AND ADJUSTMENTS:** No repairs or adjustments

**REMARKS:** All test results were determined from observed data obtained in accordance with official OECD, SAE and Nebraska test procedures. The manufacturer's claim of 43 GPM (163 lpm) remote flow with optional pump was not verified. For the maximum power tests, the fuel temperature at the injection pump was maintained at 170°F (77°C). The performance figures on this summary were taken from a test conducted under the OECD Code II test procedure.

We, the undersigned, certify that this is a true and correct report of official tractor Test No. **1882**, Nebraska Summary 539, September 30, 2006.

David L. Morgan  
Assistant Director

M.F. Kocher  
V.I. Adamchuk  
J.A. Smith  
Board of Tractor Test Engineers

| TRACTOR SOUND LEVEL WITH CAB  | Front Wheel Drive   |                  |
|-------------------------------|---------------------|------------------|
|                               | Disengaged<br>dB(A) | Engaged<br>dB(A) |
| At no load in 13th (2-5) gear | 71.8                | 71.9             |
| Bystander                     | ---                 | ---              |

### TIRES, BALLAST AND WEIGHT

|  | With Ballast              | Without Ballast          |
|--|---------------------------|--------------------------|
| <b>Rear tires</b> - No., size, ply & psi(kPa)  | Four 18.4R46; ***,10 (70) | Two 18.4R46; ***,17(115) |
| Ballast - Duals(total)                         | 1985 lb (900 kg)          | None                     |
| - Test equip (total)                           | 175 lb (79 kg)            | None                     |
| <b>Front tires</b> - No., size, ply & psi(kPa) | Two 16.9R30; ***,18 (125) | Two 16.9R30; ***,17(115) |
| Ballast - Liquid(total)                        | None                      | None                     |
| - Cast Iron(total)                             | 1900 lb (862 kg)          | None                     |
| <b>Height of Drawbar</b>                       | 19.5 in (495 mm)          | 19.0 in (485 mm)         |
| <b>Static Weight with operator</b> -Rear       | 12040 lb (5460 kg)        | 10460 lb (4745 kg)       |
| - Front  | 8205 lb (3722 kg)         | 5725 lb (2597 kg)        |
| - Total  | 20245 lb (9182 kg)        | 16185 lb (7342 kg)       |

**DRAWBAR PERFORMANCE**  
**BALLASTED - FRONT DRIVE ENGAGED**  
**MAXIMUM POWER IN SELECTED GEARS**

| Power<br>Hp<br>(kW) | Drawbar<br>pull<br>lbs<br>(kN) | Speed<br>mph<br>(km/h) | Crank-<br>shaft<br>speed<br>rpm | Slip<br>% | Fuel Consumption<br>lb/hp.hr<br>(kg/kW.h) | Fuel Consumption<br>Hp.hr/gal<br>(kW.h/l) | Temp. °F(°C)<br>cool-<br>ing<br>med | Air<br>dry<br>bulb | Barom.<br>inch<br>Hg<br>(kPa) |
|---------------------|--------------------------------|------------------------|---------------------------------|-----------|---|---|-------------------------------------|--------------------|-------------------------------|
| 8th(2-2) Gear       |                                |                        |                                 |           |   |   |                                     |                    |                               |
| 145.15<br>(108.24)  | 20124<br>(89.52)               | 2.70<br>(4.35)         | 2277                            | 7.88      | 0.494<br>(0.301)                          | 14.15<br>(2.79)                           | 171<br>(77)                         | 61<br>(16)         | 29.00<br>(98.21)              |
| 9th(1-7) Gear       |                                |                        |                                 |           |   |   |                                     |                    |                               |
| 144.24<br>(107.56)  | 19095<br>(84.94)               | 2.83<br>(4.56)         | 2271                            | 7.37      | 0.501<br>(0.305)                          | 13.95<br>(2.75)                           | 178<br>(81)                         | 66<br>(19)         | 29.00<br>(98.21)              |
| 10th(2-3) Gear      |                                |                        |                                 |           |   |   |                                     |                    |                               |
| 153.71<br>(114.62)  | 19025<br>(84.63)               | 3.03<br>(4.88)         | 2154                            | 6.95      | 0.470<br>(0.286)                          | 14.88<br>(2.93)                           | 178<br>(81)                         | 63<br>(17)         | 29.00<br>(98.21)              |
| 11th(1-8) Gear      |                                |                        |                                 |           |   |   |                                     |                    |                               |
| 153.46<br>(114.43)  | 18334<br>(81.56)               | 3.14<br>(5.05)         | 2134                            | 6.80      | 0.470<br>(0.286)                          | 14.88<br>(2.93)                           | 179<br>(82)                         | 67<br>(19)         | 29.00<br>(98.21)              |
| 12th(2-4) Gear      |                                |                        |                                 |           |   |   |                                     |                    |                               |
| 163.29<br>(121.77)  | 18107<br>(80.54)               | 3.38<br>(5.44)         | 2027                            | 5.81      | 0.451<br>(0.274)                          | 15.51<br>(3.05)                           | 177<br>(81)                         | 65<br>(18)         | 29.00<br>(98.21)              |
| 13th(2-5) Gear      |                                |                        |                                 |           |   |   |                                     |                    |                               |
| 172.62<br>(128.72)  | 17075<br>(75.95)               | 3.79<br>(6.10)         | 1901                            | 4.93      | 0.434<br>(0.264)                          | 16.10<br>(3.17)                           | 181<br>(83)                         | 66<br>(19)         | 29.00<br>(98.21)              |
| 14th(3-1) Gear      |                                |                        |                                 |           |   |   |                                     |                    |                               |
| 171.58<br>(127.95)  | 16185<br>(72.00)               | 3.98<br>(6.40)         | 1900                            | 4.75      | 0.438<br>(0.267)                          | 15.95<br>(3.14)                           | 179<br>(82)                         | 68<br>(20)         | 29.00<br>(98.21)              |
| 15th(2-6) Gear      |                                |                        |                                 |           |   |   |                                     |                    |                               |
| 171.57<br>(127.94)  | 14311<br>(63.66)               | 4.50<br>(7.24)         | 1901                            | 3.96      | 0.437<br>(0.266)                          | 15.98<br>(3.15)                           | 180<br>(82)                         | 69<br>(21)         | 29.00<br>(98.21)              |
| 16th(3-2) Gear      |                                |                        |                                 |           |   |   |                                     |                    |                               |
| 173.03<br>(129.03)  | 13749<br>(61.16)               | 4.72<br>(7.59)         | 1898                            | 3.58      | 0.434<br>(0.264)                          | 16.11<br>(3.17)                           | 181<br>(83)                         | 68<br>(20)         | 29.00<br>(98.21)              |
| 17th(2-7) Gear      |                                |                        |                                 |           |   |   |                                     |                    |                               |
| 170.72<br>(127.31)  | 12056<br>(53.63)               | 5.31<br>(8.55)         | 1898                            | 3.15      | 0.442<br>(0.269)                          | 15.81<br>(3.11)                           | 183<br>(84)                         | 69<br>(21)         | 29.00<br>(98.21)              |
| 18th(3-3) Gear      |                                |                        |                                 |           |   |   |                                     |                    |                               |
| 172.74<br>(128.81)  | 11602<br>(51.61)               | 5.58<br>(8.99)         | 1900                            | 2.83      | 0.437<br>(0.266)                          | 15.98<br>(3.15)                           | 181<br>(83)                         | 68<br>(20)         | 29.00<br>(98.21)              |
| 19th(2-8) Gear      |                                |                        |                                 |           |   |   |                                     |                    |                               |
| 171.47<br>(127.86)  | 10224<br>(45.48)               | 6.29<br>(10.12)        | 1905                            | 2.54      | 0.440<br>(0.267)                          | 15.90<br>(3.13)                           | 181<br>(83)                         | 70<br>(21)         | 29.00<br>(98.21)              |
| 20th(3-4) Gear      |                                |                        |                                 |           |   |   |                                     |                    |                               |
| 172.05<br>(128.30)  | 9790<br>(43.55)                | 6.59<br>(10.61)        | 1902                            | 2.30      | 0.435<br>(0.265)                          | 16.07<br>(3.16)                           | 183<br>(84)                         | 70<br>(21)         | 29.00<br>(98.21)              |
| 21st(3-5) Gear      |                                |                        |                                 |           |   |   |                                     |                    |                               |
| 170.42<br>(127.08)  | 8155<br>(36.28)                | 7.84<br>(12.61)        | 1901                            | 1.83      | 0.442<br>(0.269)                          | 15.82<br>(3.12)                           | 183<br>(84)                         | 71<br>(22)         | 29.01<br>(98.24)              |
| 22nd(4-1) Gear      |                                |                        |                                 |           |   |   |                                     |                    |                               |
| 168.21<br>(125.43)  | 7336<br>(32.63)                | 8.60<br>(13.84)        | 1902                            | 1.59      | 0.449<br>(0.273)                          | 15.58<br>(3.07)                           | 184<br>(85)                         | 76<br>(24)         | 29.01<br>(98.24)              |

CATEGORY: III

|  |                              |                                 |
|--|------------------------------|---------------------------------|
| Quick Attach: None   | <u>100 mm lift cylinders</u> |                                 |
| Maximum force exerted through whole range:                         | 16317 lbs (72.6 kN)          |                                 |
| i) Opening pressure of relief valve:                               | NA                           |                                 |
|  | <u>one outlet set</u>        | <u>two outlet sets combined</u> |
| Sustained pressure of the open relief valve:                       | 2874 psi (198 bar)           | 2878 psi (198 bar)              |
| ii) Pump delivery rate at minimum pressure and rated engine speed: | 28.9 GPM (109.4 l/min)       | 32.4 GPM (122.6 l/min)          |
| iii) Pump delivery rate at maximum hydraulic power:                | 27.3 GPM (103.3 l/min)       | 30.5 GPM (115.5 l/min)          |
| Delivery pressure:   | 2243 psi (155 bar)           | 2487 psi (171 bar)              |
| Power:   | 35.7 hp (26.6 kW)            | 44.3 hp (33.0 kW)               |

**HITCH DIMENSIONS AS TESTED—NO LOAD**  
**100 mm lift cylinders**

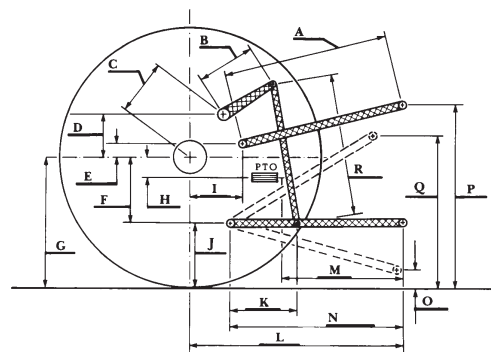
|   | OECD | test | SAE test |      |
|---|------|------|----------|------|
|   | inch | mm   | inch     | mm   |
| A | 30.8 | 781  | 30.8     | 781  |
| B | 16.1 | 410  | 16.1     | 410  |
| C | 18.1 | 461  | 18.1     | 461  |
| D | 17.7 | 450  | 17.7     | 450  |
| E | 12.2 | 310  | 12.2     | 310  |
| F | 13.8 | 350  | 13.8     | 350  |
| G | 36.2 | 920  | 36.2     | 920  |
| H | 8.1  | 205  | 8.1      | 205  |
| I | 17.7 | 450  | 17.7     | 450  |
| J | 22.4 | 570  | 22.4     | 570  |
| K | 26.6 | 675  | 26.6     | 675  |
| L | 49.3 | 1253 | 49.3     | 1253 |
| M | 25.7 | 653  | 25.7     | 653  |
| N | 39.5 | 1003 | 39.5     | 1003 |
| O | 9.0  | 228  | 8.0      | 203  |
| P | 49.4 | 1255 | 44.4     | 1128 |
| Q | 39.1 | 994  | 38.1     | 968  |
| R | 41.4 | 1053 | 42.2     | 1071 |

**THREE POINT HITCH PERFORMANCE**

|                                      |                |
|--------------------------------------|----------------|
| Observed Maximum Pressure psi. (bar) | 2880 (198)     |
| Location:                            | lift cylinder  |
| Hydraulic oil temperature: °F (°C)   | 145 (63)       |
| Location:                            | hydraulic sump |
| Category:                            | III            |
| Quick attach:                        | none           |

**SAE Static Test (100 mm cylinders) - System pressure 2586 psi (178 Bar)**

|   |           |            |            |            |             |
|---|-----------|------------|------------|------------|-------------|
| Hitch point distance to ground level in. (mm) | 8.0 (203) | 16.0 (406) | 24.0 (610) | 32.0 (813) | 40.0 (1016) |
| Lift force on frame lb                        | 21494     | 20242      | 20202      | 19804      | 19906       |
| " " " " " " (kN)                              | (95.6)    | (90.0)     | (89.9)     | (88.1)     | (88.5)      |



**McCormick XTX 215 Diesel**

Institute of Agriculture and Natural Resources  
University of Nebraska-Lincoln