

# NEBRASKA OECD TRACTOR TEST 1928A – SUMMARY 600A

## CHALLENGER MT945B DIESEL

### ALSO CHALLENGER MT945C DIESEL

## 16 SPEED

### POWER TAKE-OFF PERFORMANCE

Power HP (kW)	Crank shaft speed rpm	Gal/hr (l/h)	lb/hp.hr (kg/kW.h)	Hp.hr/gal (kW.h/l)	Mean Atmospheric Conditions
<b>MAXIMUM POWER AND FUEL CONSUMPTION</b>					
<b>Rated Engine Speed—(PTO speed—1050 rpm)</b>					
363.35 (270.95)	2100	23.05 (87.25)	0.444 (0.270)	15.77 (3.11)	
<b>Standard Power Take-off Speed - (PTO speed - 1000 rpm)</b>					
383.04 (285.63)	2000	23.51 (88.99)	0.430 (0.262)	16.29 (3.21)	
<b>Maximum Power (1 hour)</b>					
416.25 (310.40)	1700	23.91 (90.52)	0.403 (0.245)	17.41 (3.43)	

### VARYING POWER AND FUEL CONSUMPTION

363.35 (270.95)	2100	23.05 (87.24)	0.444 (0.270)	15.77 (3.11)	Air temperature
321.33 (239.62)	2184	21.19 (80.22)	0.462 (0.281)	15.16 (2.99)	77°F(25°C)
243.10 (181.28)	2199	18.24 (69.04)	0.526 (0.320)	13.33 (2.63)	Relative humidity
159.81 (119.17)	2199	14.29 (54.08)	0.626 (0.381)	11.19 (2.20)	48%
79.67 (59.41)	2199	10.16 (38.46)	0.894 (0.544)	7.84 (1.54)	Barometer
2.09 (1.56)	2199	6.55 (24.80)	21.936 (13.343)	0.32 (0.06)	28.99" Hg(98.17 kPa)

Maximum Torque - 1446 lb.-ft. (1961 Nm) at 1054 rpm  
 Maximum Torque Rise - 59.1%  
 Torque rise at 1700 engine rpm - 41%  
 Power increase at 1700 engine rpm - 14.6%

### DRAWBAR PERFORMANCE (Unballasted)

#### FUEL CONSUMPTION CHARACTERISTICS

Power Hp (kW)	Drawbar pull lbs (kN)	Speed mph (km/h)	Crank- shaft speed rpm	Slip %	Fuel Consumption lb/hp.hr (kg/kW.h)	Hp.hr/gal (kW.h/l)	Temp. °F cool- ing med	Air dry bulb	Barom. inch Hg (kPa)
<b>Maximum Power—6th Gear</b>									
327.08 (243.90)	28501 (126.78)	4.30 (6.93)	2097	2.61	0.503 (0.306)	13.93 (2.74)	189 (87)	81 (27)	28.48 (96.44)
<b>75% of Pull at Maximum Power—6th Gear</b>									
259.83 (193.76)	21404 (95.21)	4.55 (7.33)	2199	1.84	0.549 (0.334)	12.77 (2.52)	189 (87)	88 (31)	28.48 (96.44)
<b>50% of Pull at Maximum Power—6th Gear</b>									
173.83 (129.63)	14208 (63.20)	4.59 (7.38)	2201	1.11	0.663 (0.404)	10.56 (2.08)	187 (86)	90 (32)	28.48 (96.44)
<b>75% of Pull at Reduced Engine Speed—9th Gear</b>									
259.73 (193.68)	21488 (95.58)	4.53 (7.29)	1535	1.83	0.487 (0.296)	14.40 (2.84)	190 (88)	88 (31)	28.48 (96.44)
<b>50% of Pull at Reduced Engine Speed—9th Gear</b>									
173.72 (129.54)	14289 (63.56)	4.56 (7.34)	1532	1.05	0.546 (0.332)	12.83 (2.53)	188 (87)	91 (33)	28.48 (96.44)

**Location of tests:** Nebraska Tractor Test Laboratory, University of Nebraska, Lincoln, Nebraska 68583-0832

**Dates of tests:** May 27 - June 6, 2008

Three point lift performance - March 18, 2009.

**Manufacturer:** AGCO Corporation, 4205 River Green Parkway, Duluth Ga. 30096

**FUEL, OIL and TIME:** Fuel No. 2 Diesel **Specific gravity converted to 60°/60°F (15°/15°C)** 0.8416 **Fuel weight** 7.007 lbs/gal (0.840 kg/l) **Oil SAE** 10W-30 **API service classification** CI-4 **Transmission and hydraulic lubricant** AGCO Trandraulic 821 XL fluid **Total time engine was operated:** 24.0 hours

**ENGINE: Make** Caterpillar Diesel **Type** six cylinder vertical with turbocharger and air to air aftercooler **Serial No.** \*JAS00777\* **Crankshaft** lengthwise **Rated engine speed** 2100 **Bore and stroke** 5.402" x 6.748" (137.2 mm x 171.4 mm) **Compression ratio** 18.0 to 1 **Displacement** 928 cu in (15213 ml) **Starting system** 12 volt **Lubrication** pressure **Air cleaner** two paper elements and aspirator **Oil filter** one full flow cartridge **Oil cooler** engine coolant heat exchanger for crankcase oil, radiator for hydraulic oil, radiator for transmission and front and rear axle oil **Fuel filter** two paper elements and water separator **Muffler** vertical **Cooling medium temperature control** 2 thermostats

**ENGINE OPERATING PARAMETERS: Fuel rate:** 159.0 - 168.7 lb/h (72.1 - 76.5 kg/h) **High idle:** 2175 - 2225 rpm **Turbo boost:** nominal 18.9 - 20.3 psi (130 - 140 kPa) as measured 19.1 psi (132 kPa)

**CHASSIS: Type** four wheel drive with triples **Serial No.** \*AGCC0945PNTRG1007\* **Treadwidth** rear 77.0" (1955 mm) to 183.0" (4650 mm) front 77.0" (1955 mm) to 183.0" (4650 mm) **Wheelbase** 155.5" (3950 mm) **Hydraulic control system** direct engine drive **Transmission** selective gear fixed ratio with full range operator controlled power shift **Nominal travel speeds mph (km/h)** first 1.65 (2.65) second 2.09 (3.36) third 2.65 (4.26) fourth 3.36 (5.41) fifth 4.00 (6.44) sixth 4.50 (7.25) seventh 5.08 (8.17) eighth 5.72 (9.20) ninth 6.43 (10.34) tenth 7.24 (11.65) eleventh 8.16 (13.14) twelfth 9.19 (14.79) thirteenth 10.94 (17.61) fourteenth 13.89 (22.36) fifteenth 17.59 (28.30) sixteenth 24.46 (39.36) at 2300 rpm, reverse 1.32 (2.12), 3.20 (5.15), 3.60 (5.80), 8.76 (14.09) **Clutch** wet multiple disc hydraulically actuated by foot pedal **Brakes** wet multiple disc hydraulically actuated foot pedal **Steering** hydrostatic **Power take-off** 1000 rpm at 2000 engine rpm **Unladen tractor mass** 50495 lb (22904 kg)

## DRAWBAR PERFORMANCE

### Unballasted at 2100 RPM

#### MAXIMUM POWER IN SELECTED GEARS

Power Hp (kW)	Drawbar pull lbs (kN)	Speed mph (km/h)	Crank- shaft speed rpm	Slip %	Fuel Consumption lb/hp.hr (kg/kW.h)	Consumption Hp.hr/gal (kW.h/l)	Temp. °F (°C) cool- ing med	Air dry bulb	Barom. inch Hg (kPa)
<b>2nd Gear</b>									
244.75 (182.51)	49755 (221.32)	1.84 (2.97)	2198	14.21	0.609 (0.370)	11.51 (2.27)	188 (86)	70 (21)	28.42 (96.24)
<b>3rd Gear</b>									
300.86 (224.35)	48428 (215.42)	2.33 (3.75)	2098	10.25	0.547 (0.333)	12.82 (2.52)	189 (87)	72 (22)	28.41 (96.21)
<b>4th Gear</b>									
315.85 (235.53)	37393 (166.33)	3.17 (5.10)	2102	4.12	0.521 (0.317)	13.45 (2.65)	189 (87)	72 (22)	28.41 (96.21)
<b>5th Gear</b>									
325.76 (242.92)	32115 (142.86)	3.80 (6.12)	2098	3.15	0.505 (0.307)	13.88 (2.73)	189 (87)	73 (23)	28.40 (96.17)
<b>6th Gear</b>									
327.08 (243.90)	28501 (126.78)	4.30 (6.93)	2097	2.61	0.503 (0.306)	13.93 (2.74)	189 (87)	81 (27)	28.48 (96.45)
<b>7th Gear</b>									
324.50 (241.98)	24911 (110.81)	4.88 (7.86)	2101	2.21	0.505 (0.307)	13.88 (2.73)	189 (87)	83 (28)	28.48 (96.45)
<b>8th Gear</b>									
323.95 (241.57)	22029 (97.99)	5.51 (8.87)	2100	1.91	0.505 (0.307)	13.87 (2.73)	189 (87)	86 (30)	28.48 (96.45)
<b>9th Gear</b>									
314.63 (234.62)	19018 (84.60)	6.20 (9.98)	2098	1.70	0.518 (0.315)	13.53 (2.67)	189 (87)	75 (24)	28.65 (97.02)
<b>10th Gear</b>									
312.71 (233.19)	16746 (74.49)	7.00 (11.27)	2099	1.46	0.518 (0.315)	13.52 (2.66)	189 (87)	79 (26)	28.67 (97.09)
<b>11th Gear</b>									
298.32 (222.46)	14149 (62.94)	7.91 (12.72)	2095	1.19	0.545 (0.331)	12.87 (2.53)	190 (88)	78 (26)	28.50 (96.51)
<b>12th Gear</b>									
299.32 (223.20)	12549 (55.82)	8.94 (14.39)	2100	0.98	0.544 (0.331)	12.89 (2.54)	189 (87)	81 (27)	28.49 (96.48)

**REPAIRS AND ADJUSTMENTS:** No repairs or adjustments.

**NOTE:** Report reissued, supplemental for Challenger MT 945C Diesel, July, 2009.

**REMARKS:** All test results were determined from observed data obtained in accordance with official OECD, SAE and Nebraska test procedures. For the maximum power tests the fuel temperature at the primary fuel filter was maintained at 112°F(45°C). The performance figures on this summary were taken from a test conducted under the OECD Code II test procedure.

We, the undersigned, certify that this is a true and correct report of official Tractor Test No. **1928A**, Nebraska Summary 600A, July 17, 2009.

Roger M. Hoy  
Director

M.F. Kocher  
V.I. Adamchuk  
J.A. Smith  
Board of Tractor Test Engineers

#### TRACTOR SOUND LEVEL WITH CAB

dB(A)

At no load in 6th gear	76.5
Bystander	--

#### TIRES AND WEIGHT

**Rear tires** - No., size, ply & psi(kPa)  
**Front tires** - No., size, ply & psi(kPa)  
**Height of Drawbar**  
**Static Weight with operator**-Rear  
 -Front  
 -Total

#### Tested without ballast

Six 520/85R46;\*\*\*; 8(55)  
 Six 520/85R46;\*\*\*;12(85)  
 21.5 in (545 mm)  
 22065 lb (10008 kg)  
 28605 lb (12975 kg)  
 50670 lb (22983 kg)

**DRAWBAR PERFORMANCE**  
**(Unballasted at 1700 RPM)**  
**MAXIMUM POWER IN SELECTED GEARS**

Power Hp (kW)	Drawbar pull lbs (kN)	Speed mph (km/h)	Crank- shaft speed rpm	Slip %	Fuel Consumption lb/hp.hr (kg/kW.h)	Fuel Consumption Hp.hr/gal (kW.h/l)	Temp. °F(°C) cool- ing med	Air dry bulb	Barom. inch Hg (kPa)
2nd Gear									
251.18 (187.30)	49652 (220.86)	1.90 (3.05)	2198	11.79	0.589 (0.359)	11.89 (2.34)	189 (87)	70 (21)	28.41 (96.21)
3rd Gear									
302.21 (225.36)	47923 (213.17)	2.36 (3.81)	2102	9.13	0.543 (0.330)	12.91 (2.54)	189 (87)	71 (22)	28.41 (96.21)
4th Gear									
342.52 (255.42)	47155 (209.76)	2.72 (4.38)	1897	8.69	0.513 (0.312)	13.66 (2.69)	190 (88)	72 (22)	28.41 (96.21)
5th Gear									
358.58 (267.39)	45315 (201.57)	2.97 (4.78)	1705	6.98	0.482 (0.293)	14.53 (2.86)	191 (88)	74 (23)	28.40 (96.17)
6th Gear									
367.96 (274.39)	40475 (180.04)	3.41 (5.49)	1700	4.86	0.465 (0.283)	15.05 (2.97)	191 (88)	75 (24)	28.39 (96.14)
7th Gear									
370.87 (276.56)	35530 (158.04)	3.91 (6.30)	1711	3.75	0.468 (0.285)	14.98 (2.95)	191 (88)	76 (24)	28.39 (96.14)
8th Gear									
372.72 (277.94)	31696 (140.99)	4.41 (7.10)	1700	3.10	0.463 (0.281)	15.15 (2.98)	191 (88)	85 (29)	28.48 (96.44)
9th Gear									
366.72 (273.46)	27625 (122.88)	4.98 (8.01)	1699	2.59	0.472 (0.287)	14.85 (2.93)	191 (88)	77 (25)	28.66 (97.05)
10th Gear									
366.71 (273.46)	24438 (108.71)	5.63 (9.06)	1700	2.24	0.472 (0.287)	14.84 (2.92)	191 (88)	80 (27)	28.68 (97.12)
11th Gear									
360.79 (269.04)	21241 (94.48)	6.37 (10.25)	1698	1.81	0.477 (0.290)	14.70 (2.90)	191 (88)	79 (26)	28.49 (96.48)
12th Gear									
359.66 (268.20)	18757 (83.43)	7.19 (11.57)	1698	1.54	0.477 (0.290)	14.68 (2.89)	191 (88)	81 (27)	28.49 (96.48)
13th Gear									
357.93 (266.91)	15687 (69.78)	8.56 (13.77)	1691	1.26	0.479 (0.291)	14.63 (2.88)	191 (88)	81 (27)	28.48 (96.44)

## HYDRAULIC PERFORMANCE

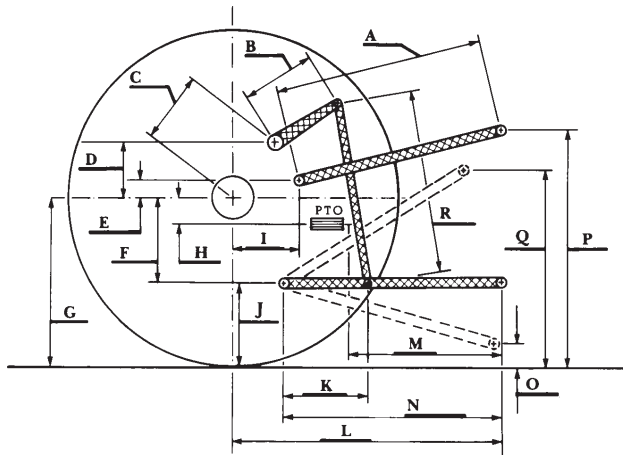
CATEGORY: IVN

Quick Attach: yes

OECD Static test

Maximum force exerted through whole range: 20107 lbs (89.4 kN)

	<b>Standard pump</b> 3 inlets - 3 outlets	<b>High flow pump</b> 3 inlets - 3 outlets
i) Sustained pressure at compensator cutoff:	3067 psi (211 bar)	2917 psi (201 bar)
ii) Pump delivery rate at minimum pressure and rated engine speed:	43.7 GPM (165.4 l/min)	59.4 GPM (224.9 l/min)
iii) Pump delivery rate at maximum hydraulic power:	41.2 GPM (156.0 l/min)	54.5 GPM (206.4 l/min)
Delivery pressure:	2761 psi (190 bar)	2652 psi (183 bar)
Power:	66.4 HP (49.5 kW)	84.4 HP (62.9 kW)
	1 inlet - 1 outlet	1 inlet - 1 outlet
i) Sustained pressure at compensator cutoff:	2844 psi (196 bar)	2801 psi (193 bar)
ii) Pump delivery rate at minimum pressure and rated engine speed:	42.2 GPM (159.7 l/min)	42.4 GPM (160.7 l/min)
iii) Pump delivery rate at maximum hydraulic power:	41.9 GPM (158.6 l/min)	33.0 GPM (124.7 l/min)
Delivery pressure:	1903 psi (131 bar)	1933 psi (133 bar)
Power:	46.5 HP (34.7 kW)	37.2 HP (27.7 kW)



### HITCH DIMENSIONS AS TESTED—NO LOAD

	inch	mm
A	30.9	785
B	21.7	550
C	41.0	1042
D	38.6	980
E	11.6	295
F	12.6	320
G	38.2	970
H	3.5	88
I	24.2	614
J	25.6	650
K	28.7	730
L	54.3	1379
*L'	61.0	1549
M	23.0	584
N	35.8	910
O	10.6	270
P	49.6	1260
Q	48.0	1220
R	56.9	1445

\*L' to Quick Attach ends



**CHALLENGER MT945B DIESEL**