

NEBRASKA OECD TRACTOR TEST 1780 - SUMMARY 314

WHITE 6810 DIESEL

32 SPEED

POWER TAKE-OFF PERFORMANCE

| Power HP (kW) | Crank shaft speed rpm | Gal/hr (l/h) | lb/hp.hr (kg/kW.h) | Hp.hr/gal (kW.h/l) | Mean Atmospheric Conditions |
|--|--------------------------------|-----------------|-----------------------|-----------------------|--------------------------------|
| MAXIMUM POWER AND FUEL CONSUMPTION | | | | | |
| Rated Engine Speed—(PTO speed—1100 rpm) | | | | | |
| 111.12 (82.86) | 2201 | 7.02 (26.57) | 0.446 (0.272) | 15.83 (3.12) | |
| Standard Power Take-off Speed(1000 rpm) | | | | | |
| 117.83 (87.87) | 2000 | 6.92 (26.19) | 0.415 (0.252) | 17.03 (3.35) | |
| Maximum Power (2 Hours) | | | | | |
| 119.87 (89.38) | 1900 | 6.88 (26.03) | 0.405 (0.247) | 17.43 (3.43) | |

| VARYING POWER AND FUEL CONSUMPTION | | | | | |
|------------------------------------|------|-----------------|-------------------|-----------------|----------------------|
| 111.12 (82.86) | 2201 | 7.02 (26.57) | 0.446 (0.272) | 15.83 (3.12) | Air temperature |
| 98.27 (73.28) | 2295 | 6.62 (25.07) | 0.476 (0.290) | 14.84 (2.92) | 76°F(22°C) |
| 74.99 (55.92) | 2335 | 5.52 (20.89) | 0.520 (0.316) | 13.59 (2.68) | Relative humidity |
| 50.77 (37.86) | 2371 | 4.37 (16.55) | 0.609 (0.370) | 11.61 (2.29) | 51% |
| 25.77 (19.22) | 2406 | 3.23 (12.21) | 0.885 (0.538) | 7.99 (1.57) | Barometer |
| 1.16 (0.86) | 2433 | 2.16 (8.20) | 13.217 (8.039) | 0.53 (0.11) | 28.74" Hg(97.33 kPa) |

Maximum Torque -367 lb.-ft. (498 Nm) at 1500 rpm
 Maximum Torque Rise -38.4%
 Torque rise at 1800 engine rpm -30%

DRAWBAR PERFORMANCE (Unballasted - Front Drive Engaged) FUEL CONSUMPTION CHARACTERISTICS

| Power Hp (kW) | Drawbar pull lbs (kN) | Speed mph (km/h) | Crank- shaft speed rpm | Slip % | Fuel Consumption lb/hp.hr (kg/kW.h) | Hp.hr/gal (kW.h/l) | Temp.°F (°C) cool- ing med | Air dry bulb | Barom. inch Hg (kPa) |
|---|--------------------------------|------------------------|---------------------------------|-----------|---|-----------------------|-------------------------------------|--------------------|-------------------------------|
| Maximum Power—17th(1HB) Gear | | | | | | | | | |
| 95.93 (71.54) | 6504 (28.93) | 5.53 (8.90) | 2199 | 3.86 | 0.518 (0.315) | 13.66 (2.69) | 193 (89) | 76 (24) | 28.80 (97.53) |
| 75% of Pull at Maximum Power—17th(1HB) Gear | | | | | | | | | |
| 76.52 (57.06) | 4885 (21.73) | 5.87 (9.45) | 2310 | 3.09 | 0.564 (0.343) | 12.53 (2.47) | 186 (85) | 70 (21) | 28.86 (97.73) |
| 50% of Pull at Maximum Power—17th(1HB) Gear | | | | | | | | | |
| 52.40 (39.07) | 3255 (14.48) | 6.04 (9.72) | 2354 | 2.26 | 0.654 (0.398) | 10.81 (2.13) | 183 (84) | 72 (22) | 28.84 (97.66) |
| 75% of Pull at Reduced Engine Speed—20th(1HD) Gear | | | | | | | | | |
| 76.13 (56.77) | 4881 (21.71) | 5.85 (9.41) | 1665 | 3.09 | 0.463 (0.282) | 15.27 (3.01) | 185 (85) | 71 (22) | 28.85 (97.70) |
| 50% of Pull at Reduced Engine Speed—20th(1HD) Gear | | | | | | | | | |
| 52.54 (39.18) | 3247 (14.44) | 6.07 (9.76) | 1712 | 2.18 | 0.517 (0.315) | 13.67 (2.69) | 182 (83) | 73 (23) | 28.83 (97.63) |

Location of Test: Nebraska Tractor Test Laboratory, University of Nebraska, Lincoln Nebraska 68583-0832

Dates of Test: June 14 - 19, 2000

Manufacturer: AGCO Corporation, Duluth Georgia 30096

FUEL, OIL and TIME: Fuel No. 2 Diesel Specific gravity converted to 60°/60° F (15°/15°C) 0.8487 Fuel weight 7.067 lbs/gal (0.847 kg/l) Oil SAE 10W-30 API service classification CE/CF-4 Transmission and hydraulic lubricant AGCO Power Fluid 821 XL fluid Front axle lubricant AGCO Gear Lube 715 Total time engine was operated 28.0 hours

ENGINE: Make Cummins Diesel **Type** six cylinder vertical with turbocharger **Serial No.** 21369965 **Crankshaft** lengthwise **Rated engine speed** 2200 **Bore and stroke** 4.016" x 4.72" (102.0 mm x 120.0 mm) **Compression ratio** 17.4 to 1 **Displacement** 359 cu in (5883 ml) **Starting system** 12 volt **Lubrication** pressure **Air cleaner** two paper elements and aspirator **Oil filter** one full flow cartridge **Oil cooler** engine coolant heat exchanger for crankcase oil, radiator for transmission and hydraulic oil **Fuel filter** two paper elements and water separator **Muffler** underhood **Exhaust** vertical **Cooling medium temperature control** one thermostat and variable speed fan

ENGINE OPERATING PARAMETERS: Fuel rate: 47.5 - 52.5 lb/h (21.5 -23.8 kg/h) **High idle:** 2425 - 2485 rpm **Turbo boost:** nominal 15.2 - 19.0 psi (105 - 130 kPa) as measured 17.1 psi (118 kPa)

CHASSIS: Type front wheel assist **Serial No.** G119032 **Tread width** rear 60.0" (1524 mm) to 118.1" (3000 mm) front 61.7" (1567 mm) to 80.8" (2053 mm) **Wheelbase** 112.6" (2860 mm) **Hydraulic control system** direct engine drive **Transmission** selective gear fixed ratio with partial (4) range operator controlled powershift **Nominal travel speeds mph (km/h)** first 1.27 (2.04) second 1.49 (2.40) third 1.76 (2.83) fourth 2.06 (3.31) fifth 2.16 (3.47) sixth 2.53 (4.07) seventh 2.84 (4.57) eighth 2.98 (4.80) ninth 3.32 (5.35) tenth 3.49 (5.62) eleventh 3.85 (6.19) twelfth 3.93 (6.32) thirteenth 4.50 (7.24) fourteenth 4.59 (7.39) fifteenth 4.76 (7.66) sixteenth 5.31 (8.55) seventeenth 5.58 (8.98) eighteenth 6.22 (10.01) nineteenth 6.58 (10.59) twentieth 7.71 (12.40) twenty-first 8.09 (13.02) twenty-second 9.48 (15.25) twenty-third 10.66 (17.15) twenty-fourth 11.18 (17.99) twenty-fifth 12.47 (20.06) twenty-sixth 13.09 (21.06) twenty-seventh 14.42 (23.20) twenty-eighth 14.72 (23.69) twenty-ninth 16.87

DRAWBAR PERFORMANCE

(Unballasted - Front Drive Engaged) MAXIMUM POWER IN SELECTED GEARS

| Power Hp (kW) | Drawbar pull lbs (kN) | Speed mph (km/h) | Crank- shaft speed rpm | Slip % | Fuel Consumption lb/hp.hr (kg/kW.h) | Consumption Hp.hr/gal (kW.h/l) | Temp. °F(°C) cool- ing med | Air dry bulb | Barom. inch Hg (kPa) |
|---------------------|--------------------------------|------------------------|---------------------------------|-----------|---|--------------------------------------|-------------------------------------|--------------------|-------------------------------|
| 8th(2LC)Gear | | | | | | | | | |
| 84.41 (62.95) | 11925 (53.05) | 2.65 (4.27) | 2208 | 14.39 | 0.584 (0.356) | 12.09 (2.38) | 185 (85) | 67 (19) | 28.61 (96.88) |
| 9th(3LB)Gear | | | | | | | | | |
| 90.25 (67.30) | 11461 (50.98) | 2.95 (4.75) | 2153 | 12.42 | 0.551 (0.335) | 12.82 (2.53) | 188 (86) | 72 (22) | 28.59 (96.82) |
| 10th(2LD)Gear | | | | | | | | | |
| 93.53 (69.74) | 11399 (50.71) | 3.08 (4.95) | 2103 | 10.92 | 0.533 (0.324) | 13.25 (2.61) | 190 (88) | 68 (20) | 28.60 (96.85) |
| 11th(4LA)Gear | | | | | | | | | |
| 94.38 (70.38) | 10851 (48.27) | 3.26 (5.25) | 2028 | 11.07 | 0.520 (0.316) | 13.59 (2.68) | 202 (94) | 83 (28) | 28.52 (96.58) |
| 12th(3LC)Gear | | | | | | | | | |
| 94.43 (70.41) | 10751 (47.82) | 3.29 (5.30) | 1973 | 9.66 | 0.519 (0.316) | 13.61 (2.68) | 197 (92) | 75 (24) | 28.58 (96.78) |
| 13th(4LB)Gear | | | | | | | | | |
| 97.38 (72.62) | 9842 (43.78) | 3.71 (5.97) | 1898 | 7.70 | 0.499 (0.303) | 14.16 (2.79) | 203 (95) | 79 (26) | 28.55 (96.68) |
| 14th(3LD)Gear | | | | | | | | | |
| 99.77 (74.40) | 9852 (43.82) | 3.80 (6.11) | 1901 | 7.35 | 0.490 (0.298) | 14.41 (2.84) | 195 (91) | 73 (23) | 28.78 (97.46) |
| 15th(1HA)Gear | | | | | | | | | |
| 100.59 (75.01) | 9544 (42.45) | 3.95 (6.36) | 1905 | 7.12 | 0.483 (0.294) | 14.62 (2.88) | 196 (91) | 72 (22) | 28.79 (97.49) |
| 16th(4LC)Gear | | | | | | | | | |
| 99.50 (74.20) | 8335 (37.07) | 4.48 (7.21) | 1900 | 5.36 | 0.492 (0.299) | 14.37 (2.83) | 196 (91) | 74 (23) | 28.79 (97.49) |
| 17th(1HB)Gear | | | | | | | | | |
| 102.00 (76.06) | 8132 (36.17) | 4.70 (7.57) | 1899 | 5.28 | 0.477 (0.290) | 14.81 (2.92) | 197 (92) | 73 (23) | 28.79 (97.49) |
| 18th(4LD)Gear | | | | | | | | | |
| 100.28 (74.78) | 7067 (31.44) | 5.32 (8.56) | 1899 | 3.94 | 0.482 (0.293) | 14.66 (2.89) | 194 (90) | 71 (22) | 28.76 (97.39) |
| 19th(1HC)Gear | | | | | | | | | |
| 100.81 (75.18) | 6733 (29.95) | 5.61 (9.04) | 1896 | 3.86 | 0.482 (0.293) | 14.65 (2.90) | 198 (92) | 75 (24) | 28.80 (97.53) |
| 20th(1HD)Gear | | | | | | | | | |
| 101.55 (75.72) | 5732 (25.50) | 6.64 (10.69) | 1902 | 3.21 | 0.480 (0.292) | 14.72 (2.90) | 198 (92) | 75 (24) | 28.80 (97.53) |
| 21st(2HA)Gear | | | | | | | | | |
| 102.49 (76.43) | 5506 (24.49) | 6.98 (11.23) | 1899 | 3.13 | 0.478 (0.291) | 14.77 (2.91) | 196 (91) | 76 (24) | 28.80 (97.53) |
| 22nd(2HB)Gear | | | | | | | | | |
| 101.03 (75.34) | 4597 (20.45) | 8.24 (13.26) | 1905 | 2.55 | 0.482 (0.293) | 14.65 (2.89) | 198 (92) | 76 (24) | 28.80 (97.53) |

(27.15) thirtieth 17.23 (27.73) thirty-first 19.92 (32.05) thirty-second 23.31 (37.52) reverse 1.16 (1.86), 1.35 (2.18), 1.60 (2.57), 1.87 (3.01), 1.96 (3.16), 2.30 (3.70), 2.58 (4.16), 2.72 (4.37), 3.03 (4.87), 3.18 (5.12), 3.50 (5.64), 3.57 (5.75), 4.10 (6.60), 4.18 (6.73), 4.34 (6.98), 4.84 (7.79), 5.08 (8.17), 5.66 (9.11), 6.00 (9.65), 7.02 (11.29), 7.37 (11.86), 8.63 (13.89), 9.70 (15.61), 10.18 (16.39), 11.36 (18.28), 11.92 (19.18), 13.13 (21.13), 13.40 (21.57), 15.37 (24.73), 15.69 (25.25), 18.14 (29.19), 21.23 (34.17) **Clutch** multiple wet disc operated by foot pedal **Brakes** single wet disc hydraulically operated by two foot pedals which can be locked together **Steering** hydrostatic **Power take-off** 540 rpm at 1997 engine rpm or 1000 rpm at 2000 engine rpm **Unladen tractor mass** 12725 lb (5772 kg)

REPAIRS AND ADJUSTMENTS: During drawbar tests, front drive disengaged, the tube in the right rear tire failed. It was replaced and testing continued.

REMARKS: All test results were determined from observed data obtained in accordance with official OECD, SAE and Nebraska test procedures. For the maximum power tests, the fuel temperature at the injection pump return was maintained at 155°F (68°C). The performance figures on this Summary were taken from a test conducted under the OECD Code II test procedure.

We, the undersigned, certify that this is a true and correct report of official Tractor Test No. **1780**, Nebraska Summary 314, June 28, 2000.

David L. Morgan
Assistant Director

L.L. Bashford
G.J. Hoffinan
M.F. Kocher
Board of Tractor Test Engineers

TIRES AND WEIGHT

Rear tires - No., size, ply & psi (kPa)
Front tires - No., size, ply & psi (kPa)
Height of Drawbar
Static Weight with operator- Rear
- Front
- Total

Tested Without Ballast

Two 18.4R38; ***; 16 (110)
Two 14.9R28; ***; 24 (165)
19.0 in (485 mm)
8230 lb (3733 kg)
4670 lb (2118 kg)
12900 lb (5851 kg)

DRAWBAR PERFORMANCE
(Unballasted - Front Drive Disengaged)
FUEL CONSUMPTION CHARACTERISTICS

| Power Hp (kW) | Drawbar pull lbs (kN) | Speed mph (km/h) | Crank- shaft speed rpm | Slip % | Fuel Consumption lb/hp.hr (kg/kW.h) | Temp. °F (°C) cool- ing med | Barom. inch Hg (kPa) | | |
|---|--------------------------------|------------------------|---------------------------------|-----------|---|--------------------------------------|-------------------------------|------------|------------------|
| Maximum Power—20th(1HD) Gear | | | | | | | | | |
| 91.35 (68.12) | 4504 (20.03) | 7.61 (12.24) | 2195 | 4.18 | 0.545 (0.332) | 12.96 (2.55) | 192 (89) | 76 (24) | 28.80 (97.53) |
| 75% of Pull at Maximum Power—20th(1HD) Gear | | | | | | | | | |
| 72.94 (54.39) | 3377 (15.02) | 8.10 (13.04) | 2313 | 3.42 | 0.586 (0.356) | 12.06 (2.38) | 186 (86) | 74 (23) | 28.83 (97.63) |
| 50% of Pull at Maximum Power—20th(1HD) Gear | | | | | | | | | |
| 49.82 (37.15) | 2252 (10.02) | 8.30 (13.35) | 2353 | 2.68 | 0.696 (0.423) | 10.16 (2.00) | 185 (85) | 77 (25) | 28.82 (97.60) |
| 75% of Pull at Reduced Engine Speed—22nd(2HB) Gear | | | | | | | | | |
| 72.81 (54.29) | 3370 (14.99) | 8.10 (13.04) | 1882 | 3.42 | 0.508 (0.309) | 13.91 (2.74) | 185 (85) | 76 (24) | 28.83 (97.63) |
| 50% of Pull at Reduced Engine Speed—22nd(2HB) Gear | | | | | | | | | |
| 49.71 (37.07) | 2247 (9.99) | 8.30 (13.35) | 1912 | 2.76 | 0.583 (0.354) | 12.13 (2.39) | 182 (83) | 79 (26) | 28.82 (97.60) |

MAXIMUM POWER IN SELECTED GEARS

| | | | | | | | | | |
|-----------------------|-----------------|-----------------|------|-------|------------------|-----------------|-------------|------------|------------------|
| 11th(4LA) Gear | | | | | | | | | |
| 84.52 (63.02) | 9152 (40.71) | 3.46 (5.57) | 2244 | 14.76 | 0.584 (0.355) | 12.10 (2.38) | 184 (84) | 67 (19) | 28.67 (97.09) |
| 12th(3LC) Gear | | | | | | | | | |
| 84.70 (63.16) | 8826 (39.26) | 3.60 (5.79) | 2235 | 12.82 | 0.585 (0.356) | 12.07 (2.38) | 185 (85) | 67 (19) | 28.69 (97.16) |
| 13th(4LB) Gear | | | | | | | | | |
| 92.84 (69.23) | 8625 (38.37) | 4.04 (6.50) | 2133 | 10.65 | 0.537 (0.327) | 13.16 (2.59) | 186 (85) | 69 (21) | 28.68 (97.12) |
| 14th(3LD) Gear | | | | | | | | | |
| 92.24 (68.78) | 8502 (37.82) | 4.07 (6.55) | 2116 | 10.79 | 0.540 (0.329) | 13.08 (2.58) | 187 (86) | 65 (18) | 28.70 (97.19) |
| 15th(1HA) Gear | | | | | | | | | |
| 92.03 (68.63) | 8023 (35.69) | 4.30 (6.92) | 2158 | 10.65 | 0.538 (0.327) | 13.14 (2.59) | 189 (87) | 72 (22) | 28.79 (97.49) |
| 16th(4LC) Gear | | | | | | | | | |
| 94.13 (70.19) | 7785 (34.63) | 4.53 (7.30) | 2015 | 9.74 | 0.524 (0.319) | 13.49 (2.66) | 191 (88) | 74 (23) | 28.79 (97.49) |
| 17th(1HB) Gear | | | | | | | | | |
| 97.35 (72.59) | 7734 (34.40) | 4.72 (7.60) | 1988 | 9.10 | 0.507 (0.308) | 13.94 (2.75) | 196 (91) | 73 (23) | 28.79 (97.49) |
| 18th(4LD) Gear | | | | | | | | | |
| 98.50 (73.45) | 7104 (31.60) | 5.20 (8.37) | 1898 | 6.05 | 0.496 (0.302) | 14.24 (2.81) | 190 (88) | 71 (22) | 28.75 (97.36) |
| 19th(1HC) Gear | | | | | | | | | |
| 98.19 (73.22) | 6723 (29.91) | 5.48 (8.81) | 1903 | 6.58 | 0.498 (0.303) | 14.20 (2.80) | 196 (91) | 75 (24) | 28.80 (97.53) |
| 20th(1HD) Gear | | | | | | | | | |
| 100.03 (74.59) | 5779 (25.71) | 6.49 (10.45) | 1899 | 5.28 | 0.487 (0.296) | 14.53 (2.86) | 198 (92) | 76 (24) | 28.80 (97.53) |
| 21st(2HA) Gear | | | | | | | | | |
| 101.25 (75.50) | 5532 (24.61) | 6.86 (11.05) | 1904 | 4.97 | 0.483 (0.294) | 14.63 (2.88) | 192 (89) | 76 (24) | 28.80 (97.53) |
| 22nd(2HB) Gear | | | | | | | | | |
| 100.48 (74.93) | 4650 (20.68) | 8.10 (13.04) | 1902 | 4.10 | 0.485 (0.295) | 14.56 (2.87) | 197 (92) | 76 (24) | 28.80 (97.53) |

| TRACTOR SOUND LEVEL WITH CAB | Front Wheel Drive | |
|-------------------------------------|--------------------------|-----------------------------|
| | Engaged dB(A) | Disengaged dB(A) |
| At no load in 14th(3LD) gear | 74.4 | 74.0 |
| Bystander | -- | -- |

THREE POINT HITCH PERFORMANCE (OECD Static Test)

CATEGORY: II

Quick Attach: None

Maximum Force Exerted

Through Whole Range: 9414 lbs (41.9 kN)

- i) Opening pressure of relief valve: NA
- Sustained pressure of the open relief valve: 2890 psi (199 bar)
- ii) Pump delivery rate at minimum pressure and rated engine speed: 28.6 GPM (108.3 l/min)
- iii) Pump delivery rate at maximum hydraulic power: 24.6 GPM (93.1 l/min)
- Delivery pressure: 2750 psi (190 bar)
- Power: 39.5 HP (29.4 kW)

HITCH DIMENSIONS AS TESTED - NO LOAD

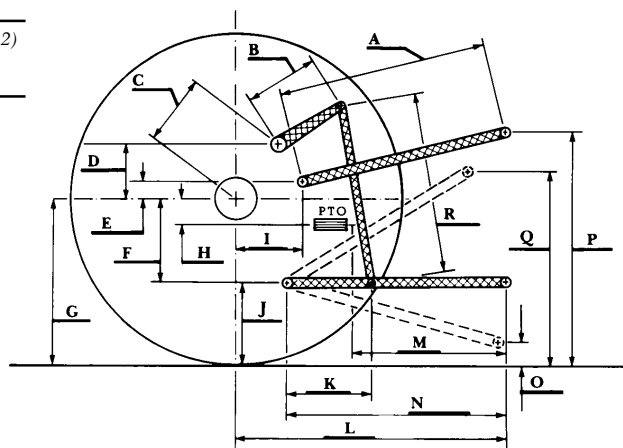
| | inch | mm |
|---|------|------|
| A | 26.9 | 683 |
| B | 11.6 | 295 |
| C | 13.9 | 354 |
| D | 13.0 | 330 |
| E | 7.9 | 200 |
| F | 10.2 | 260 |
| G | 32.3 | 820 |
| H | 1.7 | 43 |
| I | 15.0 | 382 |
| J | 22.1 | 560 |
| K | 21.7 | 550 |
| L | 40.9 | 1040 |
| M | 23.2 | 590 |
| N | 37.0 | 940 |
| O | 7.9 | 200 |
| P | 46.1 | 1170 |
| Q | 36.1 | 918 |
| R | 28.3 | 719 |

THREE POINT HITCH PERFORMANCE

| | |
|--------------------------------------|----------------|
| Observed Maximum Pressure psi. (bar) | 2850 (196) |
| Location: | lift cylinder |
| Hydraulic oil temperature: °F (°C) | 149 (65) |
| Location: | hydraulic sump |
| Category: | II |
| Quick attach: | none |

SAE Static Test—System pressure 2558 psi (176 Bar)

| | | | | | |
|---|-----------|------------|------------|------------|------------|
| Hitch point distance to ground level in. (mm) | 7.9 (201) | 14.9 (378) | 21.9 (556) | 28.9 (734) | 35.9 (912) |
| Lift force on frame lb | 13338 | 12708 | 12222 | 11412 | 10431 |
| " " " " " " (kN) | (59.3) | (56.5) | (54.4) | (52.3) | (46.4) |



White 6810 Diesel