

NEBRASKA OECD TRACTOR TEST 2051-SUMMARY 864

NEW HOLLAND TS6.125 DIESEL

8 SPEED

POWER TAKE-OFF PERFORMANCE

| Power HP (kW) | Crank shaft speed rpm | Gal/hr (l/h) | lb/hp.hr (kg/kW.h) | Hp.hr/gal (kW.h/l) | Mean Atmospheric Conditions |
|---|--------------------------------|-----------------|-----------------------|-----------------------|--------------------------------|
| MAXIMUM POWER AND FUEL CONSUMPTION | | | | | |
| Rated Engine Speed—(PTO speed—1074 rpm) | | | | | |
| 108.53 (80.93) | 2200 | 7.45 (28.19) | 0.481 (0.292) | 14.58 (2.87) | |
| Standard Power Take-off Speed (1000 rpm) | | | | | |
| 107.15 (79.90) | 2049 | 7.09 (26.85) | 0.464 (0.282) | 15.11 (2.98) | |
| Maximum Power (1 hour) | | | | | |
| 108.95 (81.24) | 1760 | 6.58 (24.91) | 0.423 (0.257) | 16.56 (3.26) | |

VARYING POWER AND FUEL CONSUMPTION

| | | | | | |
|-------------------|------|-----------------|-------------------|-----------------|----------------------|
| 108.53 (80.93) | 2200 | 7.45 (28.19) | 0.481 (0.292) | 14.58 (2.87) | Air temperature |
| 98.00 (73.08) | 2337 | 7.07 (26.77) | 0.506 (0.308) | 13.86 (2.73) | 73°F (23°C) |
| 73.80 (55.03) | 2345 | 5.96 (22.57) | 0.566 (0.344) | 12.38 (2.44) | Relative humidity |
| 49.00 (36.54) | 2346 | 4.77 (18.07) | 0.683 (0.415) | 10.27 (2.02) | 26% |
| 25.00 (18.64) | 2362 | 3.58 (13.54) | 1.003 (0.610) | 6.99 (1.38) | Barometer |
| 1.10 (0.82) | 2433 | 2.56 (9.67) | 16.282 (9.904) | 0.43 (0.08) | 28.70 Hg (97.18 kPa) |

Maximum torque - 431 lb.-ft. (585 Nm) at 1000 rpm
 Maximum torque rise - 66.3%
 Torque rise at 1760 engine rpm - 25%
 Power increase at 1760 engine rpm - 0.3%

DRAWBAR PERFORMANCE UNBALLASTED - FRONT DRIVE ENGAGED FUEL CONSUMPTION CHARACTERISTICS

| Power Hp (kW) | Drawbar pull lbs (kN) | Speed mph (km/h) | Crank- shaft speed rpm | Slip % | Fuel Consumption lb/hp.hr (kg/kW.h) | Hp.hr/gal (kW.h/l) | Temp. °F (°C) cool- ing med | Air dry bulb | Barom. inch Hg (kPa) |
|--|--------------------------------|------------------------|---------------------------------|-----------|---|-----------------------|--------------------------------------|--------------------|-------------------------------|
| Maximum Power—5th (H1) Gear | | | | | | | | | |
| 94.27 (70.30) | 6192 (27.54) | 5.71 (9.19) | 2200 | 8.4 | 0.554 (0.337) | 12.65 (2.49) | 180 (82) | 44 (7) | 28.83 (97.63) |
| 75% of Pull at Maximum Power—5th (H1) Gear | | | | | | | | | |
| 76.57 (57.10) | 4596 (20.44) | 6.25 (10.06) | 2346 | 6.1 | 0.605 (0.368) | 11.59 (2.28) | 183 (84) | 50 (10) | 28.76 (97.39) |
| 50% of Pull at Maximum Power—5th (H1) Gear | | | | | | | | | |
| 52.70 (39.29) | 3088 (13.73) | 6.40 (10.30) | 2359 | 4.2 | 0.745 (0.453) | 9.41 (1.85) | 181 (83) | 50 (10) | 28.76 (97.39) |
| 75% of Pull at Reduced Engine Speed—6th (H2) Gear | | | | | | | | | |
| 76.44 (57.00) | 4603 (20.47) | 6.23 (10.02) | 1520 | 6.0 | 0.459 (0.279) | 15.28 (3.01) | 178 (81) | 49 (9) | 28.74 (97.33) |
| 50% of Pull at Reduced Engine Speed—6th (H2) Gear | | | | | | | | | |
| 52.72 (39.32) | 3055 (13.59) | 6.47 (10.41) | 1549 | 4.1 | 0.506 (0.308) | 13.84 (2.73) | 178 (81) | 50 (10) | 28.74 (97.33) |

Location of tests: Nebraska Tractor Test Laboratory, University of Nebraska, Lincoln Nebraska 68583-0832

Dates of tests: November 29 - December 6, 2012

Manufacturer: CNH De Mexico, Queretaro Mexico

FUEL, OIL and TIME: Fuel No. 2 Diesel Specific gravity converted to 60°/60° F (15°/15° C) 0.8417 Fuel weight 7.008 lbs/gal (0.840 kg/l) Oil SAE 15W40 API service classification CI-4 Transmission and hydraulic lubricant New Holland M2C134D fluid Front axle lubricant New Holland M2C134D fluid Total time engine was operated 16.0 hours

ENGINE: Make F.P.T NEF series Diesel Type six cylinder vertical with turbocharger and air to air intercooler Serial No. 1006684 Crankshaft lengthwise Rated engine speed 2200 Bore and stroke 4.094" x 5.197" (104.0 mm x 132.0 mm) Compression ratio 17.5 to 1 Displacement 410 cu in (6728 ml) Starting system 12 volt Lubrication pressure Air cleaner two paper elements Oil filter one full flow cartridge Oil cooler engine coolant heat exchanger for crankcase oil, radiator for hydraulic and transmission oil Fuel filter one paper element Muffler vertical Cooling medium temperature control one thermostat

ENGINE OPERATING PARAMETERS: Fuel rate: 52.1 - 55.2 lb/h (23.6 - 25.0 kg/h) High idle: 2350 - 2450 rpm Turbo boost: nominal 12.3- 15.2 psi (85 - 105 kPa) as measured 13.6 psi (94 kPa)

CHASSIS: Type front wheel assist Serial No. NH000455M Tread width rear 64.0" (1626 mm) to 80.0" (2032 mm) front 64.0" (1626 mm) to 80.0" (2032 mm) Wheelbase 104.0" (2642 mm) Hydraulic control system direct engine drive Transmission selective gear fixed ratio Nominal travel speeds mph (km/h) first 1.67 (2.68) second 2.56 (4.12) third 3.48 (5.60) fourth 4.83 (7.77) fifth 6.14 (9.88) sixth 9.45 (15.21) seventh 12.83 (20.65) eighth 17.82 (28.68) reverse 1.72 (2.77), 2.65 (4.26), 3.60 (5.79), 5.00 (8.04), 6.35 (10.22), 9.77 (15.73), 13.27 (21.36), 18.43 (29.66) Clutch single dry disc operated by foot pedal Brakes single wet disc operated by two foot pedals which can be locked together Steering hydrostatic Power take-off 540 rpm at 1890 engine rpm or 1000 rpm at 2049 engine rpm Unladen tractor mass 10615 lb (4815 kg)

DRAWBAR PERFORMANCE
UNBALLASTED - FRONT DRIVE ENGAGED
MAXIMUM POWER IN SELECTED GEARS

| Power Hp (kW) | Drawbar pull lbs (kN) | Speed mph (km/h) | Crank- shaft speed rpm | Slip % | Fuel Consumption lb/hp.hr (kg/kW.h) | Temp.°F (°C) cool- ing med | Air dry bulb | Barom. inch Hg (kPa) | |
|---------------------|--------------------------------|------------------------|---------------------------------|-----------|---|-------------------------------------|--------------------|-------------------------------|------------------|
| 3rd(L3)Gear | | | | | | | | | |
| 73.62 (54.89) | 8553 (38.05) | 3.23 (5.20) | 2358 | 14.8 | 0.655 (0.399) | 10.69 (2.11) | 182 (83) | 48 (9) | 28.78 (97.46) |
| 4th(L4)Gear | | | | | | | | | |
| 89.61 (66.82) | 7794 (34.67) | 4.32 (6.94) | 2200 | 12.2 | 0.588 (0.358) | 11.92 (2.35) | 181 (83) | 48 (9) | 28.79 (97.49) |
| 5th(H1)Gear | | | | | | | | | |
| 94.27 (70.30) | 6192 (27.54) | 5.71 (9.19) | 2200 | 8.4 | 0.554 (0.337) | 12.65 (2.49) | 180 (82) | 44 (7) | 28.83 (97.63) |
| 6th(H2)Gear | | | | | | | | | |
| 94.94 (70.79) | 3899 (17.34) | 9.13 (14.69) | 2201 | 4.9 | 0.551 (0.335) | 12.72 (2.50) | 181 (83) | 46 (8) | 28.81 (97.56) |

UNBALLASTED - FRONT DRIVE ENGAGED-1760 RPM

| Power Hp (kW) | Drawbar pull lbs (kN) | Speed mph (km/h) | Crank- shaft speed rpm | Slip % | Fuel Consumption lb/hp.hr (kg/kW.h) | Temp.°F (°C) cool- ing med | Air dry bulb | Barom. inch Hg (kPa) | |
|---------------------|--------------------------------|------------------------|---------------------------------|-----------|---|-------------------------------------|--------------------|-------------------------------|------------------|
| 3rd(L3)Gear | | | | | | | | | |
| 73.64 (54.91) | 8576 (38.15) | 3.22 (5.18) | 2357 | 14.9 | 0.654 (0.398) | 10.72 (2.11) | 181 (83) | 47 (8) | 28.79 (97.49) |
| 4th(L4)Gear | | | | | | | | | |
| 90.00 (67.11) | 7852 (34.93) | 4.30 (6.92) | 2201 | 12.3 | 0.586 (0.357) | 11.95 (2.35) | 182 (83) | 47 (8) | 28.79 (97.49) |
| 5th(H1)Gear | | | | | | | | | |
| 92.27 (68.80) | 7179 (31.93) | 4.82 (7.76) | 1900 | 10.5 | 0.521 (0.317) | 13.44 (2.65) | 179 (82) | 44 (7) | 28.83 (97.63) |
| 6th(H2)Gear | | | | | | | | | |
| 95.76 (71.41) | 4990 (22.20) | 7.20 (11.59) | 1761 | 6.4 | 0.482 (0.293) | 14.55 (2.87) | 179 (82) | 48 (9) | 28.81 (97.56) |

REPAIRS AND ADJUSTMENTS: No repairs or adjustments.

REMARKS: All test results were determined from observed data obtained in accordance with official OECD, SAE and Nebraska test procedures. This tractor did not meet the manufacturer's implement flow claim of 22 GPM (83 L/min). For the maximum power tests the fuel temperature at the fuel pump return was maintained at 162°F (72°C). The performance figures on this summary were taken from a test conducted under the OECD Code II test code procedure.

We, the undersigned, certify that this is a true and correct report of official Tractor Test No. **2051**, Nebraska Summary 864, December 21, 2012.

Roger M. Hoy
 Director

M.R. Riley
 P.J. Jasa
 J.D. Luck
 Board of Tractor Test Engineers

| TRACTOR SOUND LEVEL WITH CAB | Front Wheel Drive | |
|-------------------------------------|--------------------------|-----------------------------|
| | Engaged dB(A) | Disengaged dB(A) |
| At no load in 4th (4L) gear | 79.5 | 79.5 |
| Bystander in 8th (4H) gear | | 87.4 |

TIRES AND WEIGHT

Rear Tires - No., size, ply & psi(kPa)
Front Tires - No., size, ply & psi(kPa)
Height of Drawbar
Static Weight with operator - Rear
 - Front
 - Total

Tested Without Ballast

Two 18.4-34;8;16(110)
 Two 14.9-24;8;16(110)
 23.5 in (595 mm)
 6240 lb (2830 kg)
 4550 lb (2064 kg)
 10790 lb (4894 kg)

HYDRAULIC PERFORMANCE

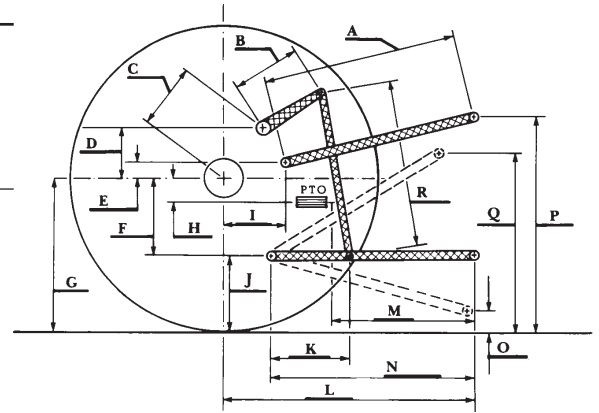
CATEGORY: II

Quick Attach: None

OECD Static test

Maximum force exerted through whole range:
 3096 lbs (13.77 kN)
 4608 lbs (20.50 kN)(1 external lift cylinder)
 6174 lbs (27.46 kN)(2 external lift cylinders)

| | Single pump system | Two pump system |
|--|---------------------------------|-----------------------|
| | two outlet sets combined | |
| i) Sustained pressure of the open relief valve: | 2612 psi (180 bar) | 2413 psi (166 bar) |
| ii) Pump delivery rate at minimum pressure and rated engine speed: | 13.3 GPM (50.4 l/min) | 20.2 GPM (76.5 l/min) |
| iii) Pump delivery rate at maximum hydraulic power: | 12.9 GPM (48.9 l/min) | 17.4 GPM (65.9 l/min) |
| Delivery pressure: | 2072 psi (143 bar) | 1725 psi (119 bar) |
| Power: | 15.6 HP (11.6 kW) | 17.5 HP (13.1 kW) |
| | single outlet set | |
| i) Sustained pressure of the open relief valve: | 2616 psi (180 bar) | 2431 psi (168 bar) |
| ii) Pump delivery rate at minimum pressure and rated engine speed: | 13.3 GPM (50.2 l/min) | 16.4 GPM (61.9 l/min) |
| iii) Pump delivery rate at maximum hydraulic power: | 12.4 GPM (47.1 l/min) | 15.5 GPM (58.7 l/min) |
| Delivery pressure: | 2052 psi (141 bar) | 1773 psi (122 bar) |
| Power: | 14.9 HP (11.1 kW) | 16.0 HP (12.0 kW) |



HITCH DIMENSIONS AS TESTED—NO LOAD

| | SAE Test | | OECD Test | |
|---|----------|------|-----------|------|
| | inch | mm | inch | mm |
| A | 27.7 | 705 | 28.5 | 724 |
| B | 9.8 | 250 | 9.8 | 250 |
| C | 14.1 | 357 | 14.1 | 357 |
| D | 13.5 | 342 | 13.5 | 342 |
| E | 8.1 | 205 | 8.1 | 205 |
| F | 9.0 | 229 | 9.0 | 229 |
| G | 30.3 | 770 | 30.3 | 770 |
| H | 0.4 | 10 | 0.4 | 10 |
| I | 12.7 | 323 | 12.7 | 323 |
| J | 21.3 | 541 | 21.3 | 541 |
| K | 18.1 | 460 | 18.1 | 460 |
| L | 40.8 | 1037 | 40.8 | 1037 |
| M | 22.9 | 581 | 22.9 | 581 |
| N | 36.6 | 930 | 36.6 | 930 |
| O | 8.0 | 203 | 8.0 | 203 |
| P | 40.3 | 1024 | 45.3 | 1151 |
| Q | 34.0 | 864 | 34.0 | 864 |
| R | 32.5 | 826 | 32.5 | 826 |

THREE POINT HITCH PERFORMANCE(SAE Static test)

| | | | | | |
|---|---------------|------------|------------|------------|------------|
| Observed maximum pressure psi. (bar) | 2480 (171) | | | | |
| Location: | lift cylinder | | | | |
| Hydraulic oil temperature: °F (°C) | 145 (63) | | | | |
| Location: | pump inlet | | | | |
| Category: | II | | | | |
| Quick attach: | none | | | | |
| System pressure 2210 psi (152 Bar) | | | | | |
| Hitch point distance to ground level in. (mm) | 8.0 (203) | 15.0 (381) | 22.0 (559) | 29.0 (737) | 36.0 (914) |
| Lift force on frame lb | 4374 | 4244 | 4127 | 4257 | 3735 |
| " " " " " " (kN) | (19.5) | (18.9) | (18.4) | (18.9) | (16.6) |
| One external lift cylinder | | | | | |
| System pressure 2210 psi (152 Bar) | | | | | |
| Hitch point distance to ground level in. (mm) | 8.0 (203) | 15.0 (381) | 22.0 (559) | 29.0 (737) | 36.0 (914) |
| Lift force on frame lb | 6764 | 6444 | 6174 | 6300 | 5499 |
| " " " " " " (kN) | (30.1) | (28.7) | (27.5) | (28.0) | (24.5) |
| Two external lift cylinders | | | | | |
| System pressure 2210 psi (152 Bar) | | | | | |
| Hitch point distance to ground level in. (mm) | 8.0 (203) | 15.0 (381) | 22.0 (559) | 29.0 (737) | 36.0 (914) |
| Lift force on frame lb | 9270 | 8622 | 8199 | 8361 | 7326 |
| " " " " " " (kN) | (41.2) | (38.4) | (36.5) | (37.2) | (32.6) |



NEW HOLLAND TS6.125 DIESEL

Institute of Agriculture and Natural Resources
 University of Nebraska-Lincoln