

NEBRASKA OECD TRACTOR TEST 2008A - SUMMARY 791A

NEW HOLLAND T9.390 DIESEL

16 SPEED

POWER TAKE-OFF PERFORMANCE

Power HP (kW)	Crank shaft speed rpm	Diesel Consumption		D.E.F. Consumption		Mean Atmospheric Conditions
		Gal/hr (l/h)	lb/hp.hr (kg/kW.h)	Hp.hr/gal (kW.h/l)	Gal/hr (l/h)	
MAXIMUM POWER AND FUEL CONSUMPTION						
Rated Engine Speed—(PTO speed—1002 rpm)						
307.70 (229.45)	2001	16.44 (62.21)	0.376 (0.229)	18.72 (3.69)	1.50 (5.68)	
Standard Power Take-off Speed (1002 rpm)						
307.70 (229.45)	2001	16.44 (62.21)	0.376 (0.229)	18.72 (3.69)	1.50 (5.68)	
Maximum Power (1 hour)						
341.13 (254.38)	1798	17.59 (66.58)	0.363 (0.221)	19.39 (3.82)	1.45 (5.49)	
VARYING POWER AND FUEL CONSUMPTION						
307.70 (229.45)	2001	16.44 (62.21)	0.376 (0.229)	18.72 (3.69)	1.50 (5.68)	Air temperature
278.37 (203.85)	2094	15.15 (57.36)	0.391 (0.238)	18.04 (3.55)	1.41 (5.33)	74°F (23°C)
206.89 (154.27)	2111	12.19 (46.13)	0.415 (0.252)	16.98 (3.34)	1.11 (4.20)	Relative humidity
139.03 (103.68)	2130	9.30 (35.21)	0.471 (0.287)	14.95 (2.94)	0.74 (2.80)	8%
70.21 (52.35)	2145	6.66 (25.22)	0.669 (0.407)	10.54 (2.08)	0.30 (1.14)	Barometer
--	2166	3.72 (14.08)	--	--	0.15 (0.57)	29.13" Hg (98.14 kPa)

Maximum torque - 1138 lb.-ft. (1543 Nm) at 1400 rpm
 Maximum torque rise - 40.9%
 Torque rise at 1600 engine rpm - 33%
 Power increase at 1798 engine rpm - 11.0%

DRAWBAR PERFORMANCE FUEL CONSUMPTION CHARACTERISTICS

Power Hp (kW)	Drawbar pull lbs (kN)	Speed mph (km/h)	Crank- shaft speed rpm	Slip %	Fuel Consumption lb/hp.hr (kg/kW.h)	Temp. °F (°C) cool- ing med	Barom. inch Hg (kPa)
Maximum Power—5th Gear							
272.97 (203.55)	18748 (83.39)	5.46 (8.79)	2000	3.7	0.425 (0.259)	16.58 (3.27)	200 57 (93) (14) (96.82)
75% of Pull at Maximum Power—5th Gear							
217.99 (162.55)	14116 (62.79)	5.79 (9.32)	2101	2.6	0.455 (0.277)	15.50 (3.05)	188 62 (87) (17) (96.75)
50% of Pull at Maximum Power—5th Gear							
147.90 (110.29)	9396 (41.80)	5.91 (9.51)	2120	1.7	0.517 (0.314)	13.63 (2.68)	184 63 (84) (17) (96.75)
75% of Pull at Reduced Engine Speed—9th Gear							
218.10 (162.64)	14059 (62.54)	5.82 (9.37)	1449	2.5	0.418 (0.254)	16.87 (3.32)	185 64 (85) (18) (96.75)
50% of Pull at Reduced Engine Speed—9th Gear							
148.02 (110.38)	9403 (41.82)	5.91 (9.51)	1458	1.7	0.446 (0.271)	15.79 (3.11)	181 64 (82) (18) (96.72)

Location of tests: Nebraska Tractor Test Laboratory, University of Nebraska, Lincoln, Nebraska 68583-0832

Dates of tests: November 9-15, 2011

Manufacturer: CNH America LLC, 700 State St. Racine, Wi. 53404 USA

CONSUMABLE Fluids, OIL and TIME: Fuel No. 2 Diesel **Specific gravity converted to 60°/60°F (15°/15°C)** 0.8463 **Fuel weight** 7.047 lbs/gal (0.845 kg/l) **Diesel Exhaust Fluid (DEF)** 30% aqueous urea solution **DEF weight** 9.071 lbs/gal (1.087 kg/l) **Oil** SAE 15W40 **API service classification** CI-4 **Transmission lubricant** New Holland Mastertran transmission fluid **Hydraulic and axle lubricant** New Holland Multi G134 hydraulic fluid **Total time engine was operated:** 16.5 hours

ENGINE: Make F.P.T. Diesel **Type** six cylinder vertical with turbocharger, air to air intercooler and D.E.F. (diesel exhaust fluid) exhaust treatment **Serial No.** *11H000010496* **Crankshaft** lengthwise **Rated engine speed** 2000 **Bore and stroke** 4.606" x 5.315" (117.0 mm x 135.0 mm) **Compression ratio** 15.9 to 1 **Displacement** 531 cu in (8704 ml) **Starting system** 24 volt **Lubrication** pressure **Air cleaner** two paper elements and aspirator **Oil filter** one full flow cartridge **Oil cooler** engine coolant heat exchanger for crankcase oil, separate radiators for hydraulic and transmission oil **Fuel filter** two paper elements **Fuel cooler** radiator for pump return fuel **Muffler** vertical **Cooling medium temperature control** thermostat and variable speed fan

ENGINE OPERATING PARAMETERS: Fuel rate: 110.1 - 118.0 lb/h (49.9 - 53.5 kg/h) **High idle:** 2100 - 2200 rpm **Turbo boost:** nominal 24.7 - 27.6 psi (170 - 190 kPa) as measured 25.9 psi (178 kPa)

CHASSIS: Type four wheel drive with duals **Serial No.** *ZBF125730* **Tread width** rear 60.0" (1524 mm) to 130.0" (3302 mm) front 60.0" (1524 mm) to 130.0" (3302 mm) **Wheelbase** 148.0" (3759 mm) **Hydraulic control system** direct engine drive **Transmission** selective gear fixed ratio with full range operator controlled powershift **Nominal travel speeds mph (km/h)** first 2.73 (4.39) second 3.29 (5.29) third 3.97 (6.39) fourth 4.78 (7.69) fifth 5.49 (8.84) sixth 6.03 (9.70) seventh 6.61 (10.63) eighth 7.27 (11.70) ninth 7.99 (12.86) tenth 8.78 (14.13) eleventh 9.62 (15.48) twelfth 10.57 (17.01) thirteenth 12.14 (19.54) fourteenth 14.62 (23.53) fifteenth 17.65 (28.40) sixteenth 21.26 (34.21) reverse 4.18 (6.73), 8.52 (13.71) **Clutch** multiple wet disc electrohydraulically operated by foot pedal **Brakes** wet disc hydraulically operated by foot pedal **Steering** hydrostatic and articulated **Power take-off** 1000 rpm at 1999 engine rpm **Unladen tractor mass** 38330 lb (17386 kg)

**DRAWBAR PERFORMANCE AT 2000 ENGINE RPM
MAXIMUM POWER IN SELECTED GEARS**

Power Hp (kW)	Drawbar pull lbs (kN)	Speed mph (km/h)	Crank- shaft speed rpm	Slip %	Fuel lb/hp.hr (kg/kW.h)	Consumption Hp.hr/gal (kW.h/l)	Temp. ^o F(°C) cool- ing med	Air dry bulb	Barom. inch Hg (kPa)
230.44 (171.84)	34349 (152.79)	2.52 (4.05)	2080	14.0	1st Gear				
					0.480 (0.292)	14.68 (2.89)	186 (86)	53 (11)	28.61 (96.88)
263.97 (196.84)	31940 (142.07)	3.10 (4.99)	2003	8.8	2nd Gear				
					0.444 (0.270)	15.86 (3.12)	184 (84)	46 (8)	28.61 (96.88)
271.75 (202.64)	26461 (117.70)	3.85 (6.20)	2000	6.0	3rd Gear				
					0.431 (0.262)	16.34 (3.22)	187 (86)	49 (10)	28.61 (96.88)
271.62 (202.55)	21632 (96.22)	4.71 (7.58)	2000	4.4	4th Gear				
					0.433 (0.264)	16.26 (3.20)	191 (88)	55 (13)	28.60 (96.85)
272.97 (203.55)	18748 (83.40)	5.46 (8.79)	2000	3.7	5th Gear				
					0.425 (0.259)	16.58 (3.27)	200 (93)	57 (14)	28.59 (96.82)
276.45 (206.15)	17131 (76.20)	6.05 (9.74)	2001	2.8	6th Gear				
					0.423 (0.257)	16.67 (3.28)	182 (83)	46 (8)	28.93 (97.97)
272.14 (202.93)	15321 (68.15)	6.67 (10.73)	2001	2.5	7th Gear				
					0.428 (0.260)	16.47 (3.24)	181 (83)	50 (10)	28.96 (98.07)
271.44 (202.41)	13864 (61.67)	7.34 (11.81)	2001	2.1	8th Gear				
					0.430 (0.261)	16.40 (3.23)	181 (83)	49 (9)	28.95 (98.04)
268.33 (200.09)	12470 (53.47)	8.07 (12.99)	2000	1.8	9th Gear				
					0.435 (0.264)	16.22 (3.19)	182 (83)	47 (9)	28.94 (98.00)

REPAIRS AND ADJUSTMENTS: No repairs or adjustments.

Note 1: The performance results on this report were obtained from tests carried out on the Case IH Steiger 350 Diesel.

Note 2: The advertised engine power levels for this tractor are not in standard SAE (U.S.) horsepower units. The advertised rated engine power of 354 DIN hp is equivalent to 349.16 SAE hp. The advertised maximum engine power of 390 CV hp is equivalent to 384.66 SAE hp.

REMARKS: All test results were determined from observed data obtained in accordance with official OECD, SAE and Nebraska test procedures. For the maximum power tests, the fuel temperature at the primary fuel filter was maintained at 110°F (43°C). The performance figures on this Summary were taken from a test conducted under the OECD Code 2 test procedure.

We, the undersigned, certify that this is a true and correct report of official Tractor Test No. **2008A**, Nebraska Summary 791A, March 5, 2012.

Roger M. Hoy
Director

M.F. Kocher
D.R. Keshwani
P.J. Jasa
Board of Tractor Test Engineers

TRACTOR SOUND LEVEL WITH CAB

	dB(A)
At no load in 4th gear	73.7
Bystander in 16th gear	86.5

TIRES AND WEIGHT

Rear Tires -No., size, ply & psi (kPa)	Tested Without Ballast
Front Tires -No., size, ply & psi (kPa)	Four 480/95R50;***;12(85)
Height of Drawbar	Four 480/95R50;***;15(105)
Static Weight with operator - Rear	21.0 in (535 mm)
- Front	16745 lb (7595 kg)
- Total	21760 lb (9870 kg)
	38505 lb (17465 kg)

DRAWBAR PERFORMANCE AT 1800 ENGINE RPM
MAXIMUM POWER IN SELECTED GEARS

Power Hp (kW)	Drawbar pull lbs (kN)	Speed mph (km/h)	Crank- shaft speed rpm	Slip %	Fuel Consumption lb/hp.hr (kg/kW.h)	Consumption Hp.hr/gal (kW.h/l)	Temp. °F(°C) cool- ing med	Air dry bulb	Barom. inch Hg (kPa)
1st Gear									
230.80 (172.10)	34479 (153.37)	2.51 (4.04)	2080	14.3	0.480 (0.292)	14.69 (2.89)	185 (85)	52 (11)	28.61 (96.88)
2nd Gear									
257.67 (192.14)	33338 (148.29)	2.90 (4.67)	1972	13.3	0.463 (0.282)	15.22 (3.00)	186 (86)	48 (9)	28.62 (96.92)
3rd Gear									
287.16 (214.14)	30216 (134.41)	3.56 (5.73)	1883	7.7	0.429 (0.261)	16.44 (3.24)	193 (89)	51 (11)	28.61 (96.88)
4th Gear									
298.36 (222.48)	26818 (119.29)	4.17 (6.71)	1800	6.1	0.418 (0.255)	16.84 (3.32)	208 (98)	56 (13)	28.60 (96.85)
5th Gear									
302.30 (225.42)	23381 (104.00)	4.85 (7.81)	1800	4.8	0.412 (0.250)	17.12 (3.37)	211 (99)	59 (15)	28.60 (96.85)
6th Gear									
306.44 (228.51)	21345 (94.95)	5.39 (8.67)	1800	3.8	0.405 (0.246)	17.41 (3.43)	189 (87)	45 (7)	28.92 (97.93)
7th Gear									
303.59 (226.38)	19163 (85.24)	5.95 (9.57)	1801	3.2	0.411 (0.250)	17.14 (3.38)	182 (83)	49 (10)	28.96 (98.07)
8th Gear									
305.64 (227.91)	17482 (77.76)	6.56 (10.55)	1800	2.8	0.406 (0.247)	17.37 (3.42)	183 (84)	48 (9)	28.95 (98.04)
9th Gear									
301.64 (224.93)	15676 (69.73)	7.22 (11.61)	1800	2.5	0.412 (0.250)	17.11 (3.37)	186 (85)	47 (8)	28.93 (97.97)
10th Gear									
302.13 (225.30)	14119 (62.80)	8.03 (12.91)	1809	2.2	0.414 (0.252)	17.03 (3.35)	186 (85)	46 (8)	28.93 (97.97)

HYDRAULIC PERFORMANCE

CATEGORY: IVN

Quick Attach: yes

OECD Static test

Maximum force exerted through whole range:	21903 lbs (97.4 kN)	
	Three outlet sets combined	
	<u>Standard pump</u>	<u>High flow pump</u>
i) Sustained pressure of the open relief valve:	2877 psi (198 bar)	3027 psi (209 bar)
ii) Pump delivery rate at minimum pressure and rated engine speed:	41.7 GPM (157.7 l/min)	58.1 GPM (220.0 l/min)
iii) Pump delivery rate at maximum hydraulic power:	43.3 GPM (163.7 l/min)	56.5 GPM (213.8 l/min)
Delivery pressure:	2526 psi (174 bar)	2680 psi (185 bar)
Power:	63.7 HP (47.5 kW)	88.3 Hp (65.9 kW)
	Single outlet set	
ii) Pump delivery rate at minimum pressure and rated engine speed:	41.0 GPM (155.2 l/min)	42.5 GPM (160.9 l/min)
iii) Pump delivery rate at maximum hydraulic power:	42.7 GPM (161.6 l/min)	40.9 GPM (154.9 l/min)
Delivery pressure:	2024 psi (139 bar)	2298 psi (158 bar)
Power:	50.4 HP (37.6 kW)	54.9 Hp (40.9 kW)

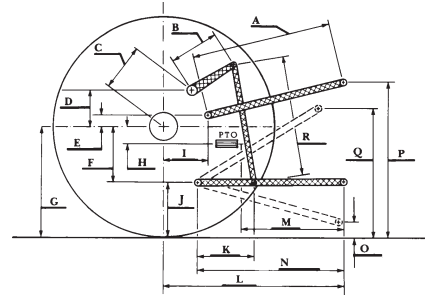
MegaFlow system

	Two outlet sets combined	
	<u>Standard pump</u>	<u>MegaFlow pump</u>
i) Sustained pressure at compensator cutoff:	2877 psi (198 bar)	2855 psi (197 bar)
ii) Pump delivery rate at minimum pressure and rated engine speed:	41.7 GPM (157.7 l/min)	54.6 GPM (206.8 l/min)
Combined flow:	96.3 GPM (364.5 l/min)	
iii) Pump delivery rate at maximum hydraulic power:	43.3 GPM (163.7 l/min)	56.4 GPM (213.6 l/min)
Delivery pressure:	2526 psi (174 bar)	2479 psi (171 bar)
Power:	63.7 HP (47.5 kW)	81.6 Hp (60.9 kW)
	Two outlet sets combined	
	<u>High flow pump</u>	<u>MegaFlow pump</u>
i) Sustained pressure at compensator cutoff:	3014 psi (208 bar)	2855 psi (197 bar)
ii) Pump delivery rate at minimum pressure and rated engine speed:	58.2 GPM (220.1 l/min)	54.6 GPM (206.8 l/min)
Combined flow:	112.8 GPM (426.9 l/min)	
iii) Pump delivery rate at maximum hydraulic power:	57.3 GPM (216.8 l/min)	56.4 GPM (213.6 l/min)
Delivery pressure:	2539 psi (175 bar)	2479 psi (171 bar)
Power:	84.8 HP (63.3 kW)	81.6 Hp (60.9 kW)

HITCH DIMENSIONS AS TESTED - NO LOAD

	inch	mm
A	39.0	990
B	30.7	780
C	27.9	709
D	26.5	673
E	13.5	342
F	16.3	415
G	38.2	970
H	2.6	66
I	21.2	538
J	21.9	555
K	30.5	775
L	58.5	1487
*L'	65.8	1671
M	53.6	1361
N	43.0	1093
O	9.1	230
P	52.6	1335
Q	46.5	1181
R	39.4	1000

*L' to Quick Attach ends



New Holland T9.390 Diesel

Institute of Agriculture and Natural Resources
University of Nebraska-Lincoln