

# NEBRASKA OECD TRACTOR TEST 2018–SUMMARY 817

## NEW HOLLAND T8.300 DIESEL

### 18 SPEED

#### POWER TAKE-OFF PERFORMANCE

| Power<br>HP<br>(kW)                            | Crank<br>shaft<br>speed<br>rpm | Diesel<br>Consumption |                       | D.E.F.<br>Consumption |                 | Mean Atmospheric<br>Conditions |
|--|--------------------------------|-----------------------|-----------------------|-----------------------|-----------------|--------------------------------|
|  |                                | Gal/hr<br>(l/h)       | lb/hp.hr<br>(kg/kW.h) | Hp.hr/gal<br>(kW.h/l) | Gal/hr<br>(l/h) |                                |
| <b>MAXIMUM POWER AND FUEL CONSUMPTION</b>      |                                |                       |                       |                       |                 |                                |
| <b>Rated Engine Speed—(PTO speed—1110 rpm)</b> |                                |                       |                       |                       |                 |                                |
| 219.98<br>(164.04)                             | 2000                           | 12.03<br>(45.52)      | 0.385<br>(0.234)      | 18.29<br>(3.60)       | 0.80<br>(3.03)  |                                |
| <b>Standard Power Take-off Speed (998 rpm)</b> |                                |                       |                       |                       |                 |                                |
| 275.83<br>(205.69)                             | 1800                           | 13.88<br>(52.53)      | 0.354<br>(0.215)      | 19.88<br>(3.92)       | 1.15<br>(4.36)  |                                |
| <b>Maximum Power (1 hour)</b>                  |                                |                       |                       |                       |                 |                                |
| 275.83<br>(205.69)                             | 1800                           | 13.88<br>(52.53)      | 0.354<br>(0.215)      | 19.88<br>(3.92)       | 1.15<br>(4.36)  |                                |

#### VARYING POWER AND FUEL CONSUMPTION

|                    |      |                  |                  |                 |                |                       |
|--------------------|------|------------------|------------------|-----------------|----------------|-----------------------|
| 219.98<br>(164.04) | 2000 | 12.03<br>(45.52) | 0.385<br>(0.234) | 18.29<br>(3.60) | 0.80<br>(3.03) | Air temperature       |
| 195.20<br>(145.56) | 2094 | 11.17<br>(42.29) | 0.403<br>(0.245) | 17.47<br>(3.44) | 0.68<br>(2.56) | 74°F (23°C)           |
| 149.05<br>(111.15) | 2125 | 8.90<br>(33.68)  | 0.420<br>(0.255) | 16.75<br>(3.30) | 0.53<br>(2.01) | Relative humidity     |
| 100.00<br>(74.57)  | 2156 | 6.48<br>(24.51)  | 0.456<br>(0.277) | 15.44<br>(3.04) | 0.29<br>(1.11) | 24%                   |
| 51.00<br>(38.03)   | 2185 | 4.73<br>(17.91)  | 0.653<br>(0.397) | 10.78<br>(2.12) | 0.11<br>(0.43) | Barometer             |
| 2.50<br>(1.86)     | 2215 | 2.77<br>(10.48)  | 7.792<br>(4.740) | 0.90<br>(0.18)  | 0.01<br>(0.03) | 28.97" Hg (98.10 kPa) |

Maximum torque - 875 lb.-ft. (1186 Nm) at 1551 rpm

Maximum torque rise - 51.6%

Torque rise at 1599 engine rpm - 49%

Power increase at 1800 engine rpm - 25.2%

#### DRAWBAR PERFORMANCE

##### UNBALLASTED - FRONT DRIVE ENGAGED FUEL CONSUMPTION CHARACTERISTICS

| Power<br>Hp<br>(kW)                                  | Drawbar<br>pull<br>lbs<br>(kN) | Speed<br>mph<br>(km/h) | Crank-<br>shaft<br>speed<br>rpm | Slip<br>% | Fuel Consumption<br>lb/hp.hr<br>(kg/kW.h) | Hp.hr/gal<br>(kW.h/l) | Temp. °F (°C)<br>cool-<br>ing<br>med | Air<br>dry<br>bulb | Barom.<br>inch<br>Hg<br>(kPa) |
|--|--------------------------------|------------------------|---------------------------------|-----------|---|-----------------------|--------------------------------------|--------------------|-------------------------------|
| <b>Maximum Power—7th Gear</b>                        |                                |                        |                                 |           |   |                       |                                      |                    |                               |
| 191.67<br>(142.93)                                   | 16434<br>(73.10)               | 4.38<br>(7.04)         | 2001                            | 3.2       | 0.443<br>(0.269)                          | 15.88<br>(3.13)       | 184<br>(84)                          | 52<br>(11)         | 29.03<br>(98.31)              |
| <b>75% of Pull at Maximum Power—7th Gear</b>         |                                |                        |                                 |           |   |                       |                                      |                    |                               |
| 153.31<br>(114.32)                                   | 12311<br>(54.76)               | 4.67<br>(7.52)         | 2112                            | 2.0       | 0.482<br>(0.293)                          | 14.59<br>(2.87)       | 184<br>(84)                          | 58<br>(14)         | 29.00<br>(98.21)              |
| <b>50% of Pull at Maximum Power—7th Gear</b>         |                                |                        |                                 |           |   |                       |                                      |                    |                               |
| 104.22<br>(77.72)                                    | 8211<br>(36.52)                | 4.76<br>(7.66)         | 2135                            | 1.2       | 0.544<br>(0.331)                          | 12.94<br>(2.55)       | 183<br>(84)                          | 59<br>(15)         | 29.00<br>(98.21)              |
| <b>75% of Pull at Reduced Engine Speed—10th Gear</b> |                                |                        |                                 |           |   |                       |                                      |                    |                               |
| 153.64<br>(114.57)                                   | 12274<br>(54.60)               | 4.70<br>(7.56)         | 1399                            | 2.0       | 0.412<br>(0.250)                          | 17.09<br>(3.37)       | 184<br>(84)                          | 59<br>(15)         | 28.98<br>(98.14)              |
| <b>50% of Pull at Reduced Engine Speed—10th Gear</b> |                                |                        |                                 |           |   |                       |                                      |                    |                               |
| 104.47<br>(77.90)                                    | 8187<br>(36.42)                | 4.79<br>(7.70)         | 1417                            | 1.2       | 0.443<br>(0.270)                          | 15.88<br>(3.13)       | 183<br>(84)                          | 59<br>(15)         | 28.98<br>(98.14)              |

**Location of tests:** Nebraska Tractor Test Laboratory, University of Nebraska, Lincoln, Nebraska 68583-0832

**Dates of tests:** April 6 - 18, 2012

**Manufacturer:** CNH America LLC, 700 State St. Racine, Wi. 53404 USA

**CONSUMABLE Fluids, OIL and TIME: Fuel** No. 2 Diesel **Specific gravity converted to 60°/60°F (15°/15°C)** 0.8448 **Fuel weight** 7.034 lbs/gal (0.843 kg/l) **Diesel Exhaust Fluid (DEF)** 30% aqueous urea solution **DEF weight** 9.071 lbs/gal (1.087 kg/l) **Oil SAE 15W40 API service classification** CI-4 **Transmission and hydraulic lubricant** New Holland Ambra Mastertran fluid **Front axle lubricant** SAE 85W-140 API GL-5 **Total time engine was operated:** 20.5 hours

**ENGINE: Make** F.P.T. Diesel **Type** six cylinder vertical with turbocharger, air to air intercooler and D.E.F. (diesel exhaust fluid) exhaust treatment. **Serial No.** 11H00021486 **Crankshaft** lengthwise **Rated engine speed** 2000 **Bore and stroke** 4.606" x 5.315" (117.0 mm x 135.0 mm) **Compression ratio** 15.9 to 1 **Displacement** 531 cu in (8704 ml) **Starting system** 12 volt **Lubrication** pressure **Air cleaner** two paper elements and aspirator **Oil filter** one full flow cartridge **Oil cooler** engine coolant heat exchanger for crankcase oil, radiator for hydraulic and transmission oil **Fuel filter** two paper elements **Fuel cooler** radiator for pump return fuel **Muffler** vertical **Cooling medium temperature control** thermostat and variable speed fan

**ENGINE OPERATING PARAMETERS: Fuel rate:** 82.1 - 87.1 lb/h (37.2 - 39.5 kg/h) **High idle:** 2200-2250 rpm **Turbo boost:** nominal 20.3 - 24.7 psi (140 - 170 kPa) as measured 22.7 psi (156 kPa)

**CHASSIS: Type** front wheel assist **SerialNo.** \*ZCRC02440\* **Tread width** rear 64.0" (1626 mm) to 129.0" (3277 mm) front 60.0" (1524 mm) to 88.0" (2235 mm) **Wheelbase** 136.0" (3454 mm) **Hydraulic control system** direct engine drive **Transmission** selective gear fixed ratio with full range operator controlled powershift **Nominal travel speeds mph (km/h)** first 1.96 (3.15) second 2.24 (3.61) third 2.58 (4.16) fourth 2.96 (4.77) fifth 3.41 (5.48) sixth 3.90 (6.28) seventh 4.55 (7.33) eighth 5.23 (8.41) ninth 6.02 (9.69) tenth 6.91 (11.12) eleventh 7.92 (12.75) twelfth 9.09 (14.63) thirteenth 11.33 (18.23) fourteenth 12.99 (20.91) fifteenth 14.98 (24.11) sixteenth 17.19 (27.66) seventeenth 19.72 (31.73) eighteenth 22.61 (36.39) reverse 2.81 (4.53), 3.23 (5.20), 6.56 (10.55), 7.52 (12.10) **Clutch** multiple wet disc electrohydraulically operated by foot pedal **Brakes** wet disc hydraulically operated by two foot pedals that can be locked together **Steering** hydrostatic **Power take-off** 540 rpm at 1808 engine rpm or 1000 rpm at 1803 engine rpm **Unladen tractor mass** 23180 lb (10514 kg)

**DRAWBAR PERFORMANCE**  
**UNBALLASTED - FRONT DRIVE ENGAGED**  
**MAXIMUM POWER IN SELECTED GEARS**

| Power<br>Hp<br>(kW) | Drawbar<br>pull<br>lbs<br>(kN) | Speed<br>mph<br>(km/h) | Crank-<br>shaft<br>speed<br>rpm | Slip<br>% | Fuel Consumption<br>lb/hp.hr<br>(kg/kW.h) | Temp. °F (°C)<br>cool-<br>ing<br>med | Air<br>dry<br>bulb | Barom.<br>inch<br>Hg<br>(kPa) |                  |
|---------------------|--------------------------------|------------------------|---------------------------------|-----------|---|--------------------------------------|--------------------|-------------------------------|------------------|
| 5th Gear            |                                |                        |                                 |           |   |                                      |                    |                               |                  |
| 171.06<br>(127.56)  | 22126<br>(98.42)               | 2.90<br>(4.66)         | 1998                            | 13.9      | 0.505<br>(0.307)                          | 13.94<br>(2.75)                      | 183<br>(84)        | 42<br>(5)                     | 29.01<br>(98.24) |
| 6th Gear            |                                |                        |                                 |           |   |                                      |                    |                               |                  |
| 185.28<br>(138.16)  | 18811<br>(83.67)               | 3.69<br>(5.94)         | 2000                            | 4.5       | 0.462<br>(0.281)                          | 15.22<br>(3.00)                      | 183<br>(84)        | 44<br>(7)                     | 29.00<br>(98.21) |
| 7th Gear            |                                |                        |                                 |           |   |                                      |                    |                               |                  |
| 191.67<br>(142.93)  | 16434<br>(73.10)               | 4.38<br>(7.04)         | 2001                            | 3.2       | 0.443<br>(0.269)                          | 15.88<br>(3.13)                      | 184<br>(84)        | 52<br>(11)                    | 29.03<br>(98.31) |
| 8th Gear            |                                |                        |                                 |           |   |                                      |                    |                               |                  |
| 191.06<br>(142.47)  | 14185<br>(63.10)               | 5.05<br>(8.13)         | 2001                            | 2.4       | 0.446<br>(0.271)                          | 15.78<br>(3.11)                      | 184<br>(84)        | 51<br>(10)                    | 29.02<br>(98.27) |
| 9th Gear            |                                |                        |                                 |           |   |                                      |                    |                               |                  |
| 190.23<br>(141.85)  | 12190<br>(54.22)               | 5.85<br>(9.41)         | 2001                            | 2.0       | 0.448<br>(0.273)                          | 15.70<br>(3.09)                      | 186<br>(85)        | 55<br>(13)                    | 29.03<br>(98.31) |
| 10th Gear           |                                |                        |                                 |           |   |                                      |                    |                               |                  |
| 186.60<br>(139.14)  | 10387<br>(46.20)               | 6.74<br>(10.85)        | 2000                            | 1.6       | 0.456<br>(0.277)                          | 15.42<br>(3.04)                      | 186<br>(85)        | 55<br>(13)                    | 29.03<br>(98.31) |
| 11th Gear           |                                |                        |                                 |           |   |                                      |                    |                               |                  |
| 185.13<br>(138.05)  | 8955<br>(39.83)                | 7.76<br>(12.48)        | 2001                            | 1.3       | 0.460<br>(0.280)                          | 15.30<br>(3.01)                      | 187<br>(86)        | 56<br>(13)                    | 29.01<br>(98.24) |
| 12th Gear           |                                |                        |                                 |           |   |                                      |                    |                               |                  |
| 180.78<br>(134.80)  | 7600<br>(33.80)                | 8.92<br>(14.36)        | 1999                            | 1.0       | 0.472<br>(0.287)                          | 14.90<br>(2.94)                      | 185<br>(85)        | 57<br>(14)                    | 29.01<br>(98.24) |

**REPAIRS AND ADJUSTMENTS:** No repairs or adjustments.

**REMARKS:** All test results were determined from observed data obtained in accordance with official OECD, SAE and Nebraska test procedures. For the maximum power tests the fuel temperature at the primary fuel filter was maintained at 104°F (40°C). This tractor did not meet the manufacturer's 3 point lift claim of 14900 lbs (6758 kg). The manufacturer's 3 point hitch lift claim of 16550 lbs (7507 kg), with lift cylinders 1 x 95 mm and 1 x 105 mm, was not verified. The performance results on this summary were taken from OECD tests conducted under the Code 2 Test Code Procedure.

We, the undersigned, certify that this is a true and correct report of official Tractor Test No. **2018**, Nebraska Summary 817, May 17, 2012.

Roger M. Hoy  
 Director

M.F. Kocher  
 P.J. Jasa  
 J.D. Luck  
 Board of Tractor Test Engineers

| TRACTOR SOUND LEVEL WITH CAB | Front Wheel Drive |                     |
|------------------------------|-------------------|---------------------|
|                              | Engaged<br>dB(A)  | Disengaged<br>dB(A) |
| At no load in 7th gear       | 67.0              | 67.0                |
| Bystander in 18th gear       |                   | 83.5                |

**TIRES, BALLAST AND WEIGHT**

|  | With Ballast             | Without Ballast          |
|--|--------------------------|--------------------------|
| <b>Rear Tires</b> -No., size, ply & psi (kPa)  | Four 520/85R42:**;12(85) | Two 520/85R42:**;18(125) |
| <b>Ballast</b> - Duals (total)                 | 1950 lb (885 kg)         | None                     |
| - Cast Iron (total)                            | 3050 lb (1383 kg)        | None                     |
| <b>Front Tires</b> -No., size, ply & psi (kPa) | Two 420/90R30:**;20(140) | Two 420/90R30:**;18(125) |
| <b>Ballast</b> - Liquid (total)                | None                     | None                     |
| - Cast Iron (total)                            | 1320 lb (599 kg)         | None                     |
| <b>Height of Drawbar</b>                       | 21.0 in (535 mm)         | 20.5 in (520 mm)         |
| <b>Static Weight with operator</b> - Rear      | 19555 lb (8870 kg)       | 14995 lb (6802 kg)       |
| - Front  | 10120 lb (4591 kg)       | 8360 lb (3792 kg)        |
| - Total  | 29675 lb(13461 kg)       | 23355 lb(10594 kg)       |

**DRAWBAR PERFORMANCE AT 1800 ENGINE RPM**  
**UNBALLASTED - FRONT DRIVE ENGAGED**  
**MAXIMUM POWER IN SELECTED GEARS**

| Power<br>Hp<br>(kW) | Drawbar<br>pull<br>lbs<br>(kN) | Speed<br>mph<br>(km/h) | Crank-<br>shaft<br>speed<br>rpm | Slip<br>% | Fuel Consumption<br>lb/hp.hr<br>(kg/kW.h) | Consumption<br>Hp.hr/gal<br>(kW.h/l) | Temp.°F (°C)<br>cool-<br>ing<br>med | Air<br>dry<br>bulb | Barom.<br>inch<br>Hg<br>(kPa) |
|---------------------|--------------------------------|------------------------|---------------------------------|-----------|---|--------------------------------------|-------------------------------------|--------------------|-------------------------------|
| 5th Gear            |                                |                        |                                 |           |   |                                      |                                     |                    |                               |
| 171.40<br>(127.81)  | 22158<br>(98.56)               | 2.91<br>(4.68)         | 1997                            | 13.8      | 0.505<br>(0.307)                          | 13.93<br>(2.74)                      | 183<br>(84)                         | 42<br>(6)          | 29.01<br>(98.24)              |
| 6th Gear            |                                |                        |                                 |           |   |                                      |                                     |                    |                               |
| 196.98<br>(146.89)  | 21182<br>(94.22)               | 3.49<br>(5.62)         | 1962                            | 8.2       | 0.464<br>(0.282)                          | 15.16<br>(2.99)                      | 183<br>(84)                         | 46<br>(8)          | 29.01<br>(98.24)              |
| 7th Gear            |                                |                        |                                 |           |   |                                      |                                     |                    |                               |
| 217.54<br>(162.22)  | 20291<br>(90.26)               | 4.02<br>(6.47)         | 1907                            | 6.5       | 0.438<br>(0.267)                          | 16.05<br>(3.16)                      | 186<br>(85)                         | 52<br>(11)         | 29.03<br>(98.31)              |
| 8th Gear            |                                |                        |                                 |           |   |                                      |                                     |                    |                               |
| 232.10<br>(173.07)  | 19807<br>(88.11)               | 4.40<br>(7.07)         | 1802                            | 5.8       | 0.420<br>(0.256)                          | 16.74<br>(3.30)                      | 186<br>(86)                         | 54<br>(12)         | 29.03<br>(98.31)              |
| 9th Gear            |                                |                        |                                 |           |   |                                      |                                     |                    |                               |
| 237.55<br>(177.14)  | 17169<br>(76.37)               | 5.19<br>(8.35)         | 1799                            | 3.4       | 0.412<br>(0.251)                          | 17.06<br>(3.36)                      | 188<br>(86)                         | 54<br>(12)         | 29.03<br>(98.31)              |
| 10th Gear           |                                |                        |                                 |           |   |                                      |                                     |                    |                               |
| 236.59<br>(176.43)  | 14786<br>(65.77)               | 6.00<br>(9.66)         | 1803                            | 2.7       | 0.413<br>(0.251)                          | 17.04<br>(3.36)                      | 187<br>(86)                         | 54<br>(12)         | 29.03<br>(98.31)              |
| 11th Gear           |                                |                        |                                 |           |   |                                      |                                     |                    |                               |
| 236.01<br>(175.99)  | 12776<br>(56.83)               | 6.93<br>(11.14)        | 1802                            | 2.1       | 0.413<br>(0.251)                          | 17.04<br>(3.36)                      | 188<br>(87)                         | 56<br>(13)         | 29.01<br>(98.24)              |
| 12th Gear           |                                |                        |                                 |           |   |                                      |                                     |                    |                               |
| 232.98<br>(173.73)  | 10908<br>(48.52)               | 8.01<br>(12.89)        | 1810                            | 1.7       | 0.422<br>(0.257)                          | 16.67<br>(3.28)                      | 189<br>(87)                         | 57<br>(14)         | 29.00<br>(98.21)              |

**DRAWBAR PERFORMANCE AT 1800 ENGINE RPM**  
**BALLASTED - FRONT DRIVE ENGAGED**  
**MAXIMUM POWER IN SELECTED GEARS**

| Power<br>Hp<br>(kW) | Drawbar<br>pull<br>lbs<br>(kN) | Speed<br>mph<br>(km/h) | Crank-<br>shaft<br>speed<br>rpm | Slip<br>% | Fuel Consumption<br>lb/hp.hr<br>(kg/kW.h) | Fuel Consumption<br>Hp.hr/gal<br>(kW.h/l) | Temp.°F<br>cool-<br>ing<br>med | Temp.°C<br>Air<br>dry<br>bulb | Barom.<br>inch<br>Hg<br>(kPa) |
|---------------------|--------------------------------|------------------------|---------------------------------|-----------|---|---|--------------------------------|-------------------------------|-------------------------------|
| 3rd Gear            |                                |                        |                                 |           |   |   |                                |                               |                               |
| 174.52<br>(130.14)  | 29913<br>(133.06)              | 2.19<br>(3.52)         | 1990                            | 14.1      | 0.503<br>(0.306)                          | 13.99<br>(2.76)                           | 184<br>(84)                    | 50<br>(10)                    | 28.82<br>(97.60)              |
| 4th Gear            |                                |                        |                                 |           |   |   |                                |                               |                               |
| 197.25<br>(147.09)  | 28186<br>(125.38)              | 2.62<br>(4.22)         | 1951                            | 8.5       | 0.469<br>(0.285)                          | 14.99<br>(2.95)                           | 184<br>(84)                    | 50<br>(10)                    | 28.81<br>(97.56)              |
| 5th Gear            |                                |                        |                                 |           |   |   |                                |                               |                               |
| 214.37<br>(159.86)  | 27423<br>(121.98)              | 2.93<br>(4.72)         | 1880                            | 7.4       | 0.451<br>(0.275)                          | 15.58<br>(3.07)                           | 185<br>(85)                    | 50<br>(10)                    | 28.82<br>(97.60)              |
| 6th Gear            |                                |                        |                                 |           |   |   |                                |                               |                               |
| 225.43<br>(168.10)  | 25831<br>(114.90)              | 3.27<br>(5.26)         | 1801                            | 5.9       | 0.431<br>(0.262)                          | 16.32<br>(3.22)                           | 186<br>(86)                    | 51<br>(11)                    | 28.82<br>(97.60)              |
| 7th Gear            |                                |                        |                                 |           |   |   |                                |                               |                               |
| 233.33<br>(173.99)  | 22328<br>(99.32)               | 3.92<br>(6.31)         | 1800                            | 3.4       | 0.417<br>(0.254)                          | 16.88<br>(3.33)                           | 194<br>(90)                    | 65<br>(18)                    | 28.42<br>(96.24)              |
| 8th Gear            |                                |                        |                                 |           |   |   |                                |                               |                               |
| 236.45<br>(176.32)  | 19574<br>(87.07)               | 4.53<br>(7.29)         | 1801                            | 2.7       | 0.414<br>(0.252)                          | 17.00<br>(3.35)                           | 194<br>(90)                    | 67<br>(19)                    | 28.42<br>(96.24)              |
| 9th Gear            |                                |                        |                                 |           |   |   |                                |                               |                               |
| 235.28<br>(175.44)  | 16795<br>(74.71)               | 5.26<br>(8.46)         | 1801                            | 2.2       | 0.417<br>(0.254)                          | 16.86<br>(3.32)                           | 193<br>(89)                    | 64<br>(18)                    | 28.42<br>(96.24)              |
| 10th Gear           |                                |                        |                                 |           |   |   |                                |                               |                               |
| 232.72<br>(173.54)  | 14439<br>(64.23)               | 6.05<br>(9.73)         | 1800                            | 1.9       | 0.418<br>(0.255)                          | 16.81<br>(3.31)                           | 194<br>(90)                    | 65<br>(18)                    | 28.41<br>(96.21)              |
| 11th Gear           |                                |                        |                                 |           |   |   |                                |                               |                               |
| 231.52<br>(172.64)  | 12518<br>(55.68)               | 6.94<br>(11.16)        | 1801                            | 1.6       | 0.422<br>(0.257)                          | 16.65<br>(3.28)                           | 192<br>(89)                    | 69<br>(21)                    | 28.42<br>(96.24)              |
| 12th Gear           |                                |                        |                                 |           |   |   |                                |                               |                               |
| 226.30<br>(168.75)  | 10554<br>(46.95)               | 8.04<br>(12.94)        | 1808                            | 1.3       | 0.433<br>(0.263)                          | 16.26<br>(3.20)                           | 198<br>(92)                    | 69<br>(21)                    | 28.43<br>(96.28)              |

## HYDRAULIC PERFORMANCE

CATEGORY: III/IVN

Quick Attach: Yes

OECD Static test

|  |   |  |
|--|---|--|
| Maximum force exerted through whole range:                         | 14812 lbs (65.9 kN) (2 x 95 mm cylinders) | 19559 lbs (87.0 kN) (2 x 115 mm cylinders) |
|  | <b>Standard pump</b>                      | <b>High flow pump</b>                      |
|  | <u>three outlet sets combined</u>         |  |
| i) Sustained pressure at compensator cutoff:                       | 2877 psi (198 bar)                        | 2899 psi (200 bar)                         |
| ii) Pump delivery rate at minimum pressure and rated engine speed: | 44.8 GPM (169.6 l/min)                    | 60.0 GPM (226.9 l/min)                     |
| iii) Pump delivery rate at maximum hydraulic power:                | 43.4 GPM (164.3 l/min)                    | 59.7 GPM (226.0 l/min)                     |
| Delivery pressure:   | 2675 psi (184 bar)                        | 2569 psi (177 bar)                         |
| Power:   | 67.7 HP (50.5 kW)                         | 89.5 hp (66.7 kW)                          |
|  | <u>single outlet set</u>                  |  |
| i) Sustained pressure at compensator cutoff:                       | 2868 psi (198 bar)                        | 2890 psi (199 bar)                         |
| ii) Pump delivery rate at minimum pressure and rated engine speed: | 44.0 GPM (166.4 l/min)                    | 44.9 GPM (170.0 l/min)                     |
| iii) Pump delivery rate at maximum hydraulic power:                | 36.0 GPM (136.3 l/min)                    | 38.7 GPM (146.6 l/min)                     |
| Delivery pressure:   | 2269 psi (156 bar)                        | 2170 psi (150 bar)                         |
| Power:   | 47.7 HP (35.5 kW)                         | 49.0 hp (36.6 kW)                          |

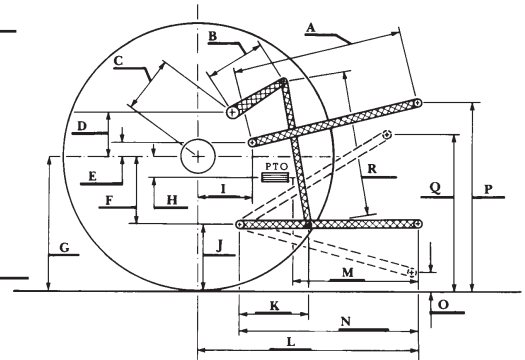
## HITCH DIMENSIONS AS TESTED—NO LOAD

|     | Category III |      | Category IVN |      |
|-----|--------------|------|--------------|------|
|     | inch         | mm   | inch         | mm   |
| A   | 25.0         | 634  | 24.0         | 610  |
| B   | 20.5         | 520  | 20.5         | 520  |
| C   | 22.9         | 581  | 22.9         | 581  |
| D   | 20.7         | 525  | 20.7         | 525  |
| E   | 10.5         | 266  | 10.5         | 266  |
| F   | 15.7         | 400  | 15.7         | 400  |
| G   | 36.6         | 930  | 36.6         | 930  |
| H   | 3.5          | 90   | 3.5          | 90   |
| I   | 20.9         | 530  | 20.9         | 530  |
| J   | 20.9         | 530  | 20.9         | 530  |
| K   | 30.2         | 768  | 30.2         | 768  |
| L   | 51.0         | 1295 | 51.0         | 1295 |
| *L' | 55.9         | 1420 | 58.1         | 1475 |
| M   | 25.0         | 636  | 25.0         | 636  |
| N   | 43.1         | 1095 | 43.1         | 1095 |
| O   | 9.0          | 230  | 9.0          | 230  |
| P   | 47.8         | 1215 | 48.4         | 1230 |
| Q   | 37.3         | 948  | 37.4         | 951  |
| R   | 40.4         | 1025 | 39.6         | 1005 |

\*L' to Quick Attach ends

## MegaFlow system

|  | Main pump              | MegaFlow pump          |
|--|------------------------|------------------------|
| i) Sustained pressure at compensator cutoff:                       | 3090 psi (213 bar)     | 2935 psi (202 bar)     |
| ii) Pump delivery rate at minimum pressure and rated engine speed: | 43.6 GPM (164.9 l/min) | 33.5 GPM (126.7 l/min) |
| Combined flow:   | 77.1 GPM (291.6 l/min) |                        |
| iii) Pump delivery rate at maximum hydraulic power:                | 36.3 GPM (137.4 l/min) | 34.5 GPM (130.7 l/min) |
| Delivery pressure:   | 2797 psi (193 bar)     | 2764 psi (191 bar)     |
| Power:   | 59.2 HP (44.1 kW)      | 55.7 Hp (41.5 kW)      |



**NEW HOLLAND T8.300 DIESEL**