

SUMMARY OF OECD TESTS 1900 and 1901—NEBRASKA SUMMARY 330

NEW HOLLAND TN 55D DIESEL

ALSO NEW HOLLAND TN 55S DIESEL

8 SPEED

POWER TAKE-OFF PERFORMANCE

| Power HP (kW) | Crank shaft speed rpm | Gal/hr (l/h) | lb/hp.hr (kg/kW.h) | Hp.hr/gal (kW.h/l) | Mean Atmospheric Conditions |
|--|--------------------------------|-----------------|-----------------------|-----------------------|--------------------------------|
| MAXIMUM POWER AND FUEL CONSUMPTION | | | | | |
| Rated Engine Speed (PTO speed 565 rpm) | | | | | |
| 43.0 (32.1) | 2300 | 2.71 (10.26) | 0.441 (0.268) | 15.89 (3.13) | |
| Standard Power Take-off speed (541 rpm) | | | | | |
| 42.6 (31.8) | 2202 | 2.65 (10.05) | 0.436 (0.265) | 16.09 (3.17) | |

| VARYING POWER AND FUEL CONSUMPTION | | | | | |
|------------------------------------|------|-----------------|------------------|-----------------|---------------------|
| 43.0 (32.1) | 2300 | 2.71 (10.26) | 0.441 (0.268) | 15.89 (3.13) | Air temperature |
| 38.3 (28.5) | 2401 | 2.35 (8.89) | 0.431 (0.262) | 16.29 (3.21) | 64°F (18°C) |
| 28.8 (21.5) | 2414 | 2.02 (7.64) | 0.492 (0.299) | 14.26 (2.81) | Relative humidity |
| 19.5 (14.6) | 2450 | 1.57 (5.94) | 0.564 (0.343) | 12.44 (2.45) | 60% |
| 9.8 (7.3) | 2475 | 1.21 (4.57) | 0.861 (0.524) | 8.12 (1.60) | Barometer |
| -- -- | 2491 | 0.89 (3.36) | -- -- | -- -- | 29.1" Hg (98.6 kPa) |

Maximum Torque -136.3 lb.-ft. (184.8 Nm) at 1099 rpm
 Maximum Torque Rise -38.5%
 Torque rise at 1800 engine rpm -17%

DRAWBAR PERFORMANCE

BALLASTED - FRONT DRIVE ENGAGED FUEL CONSUMPTION CHARACTERISTICS

| Power Hp (kW) | Drawbar pull lbs (kN) | Speed mph (km/h) | Crank- shaft speed rpm | Slip % | Fuel Consumption lb/hp.hr (kg/kW.h) | Hp.hr/gal (kW.h/l) | Temp.°F (°C) cool- ing med | Air dry bulb | Barom. inch Hg (kPa) |
|--|--------------------------------|------------------------|---------------------------------|-----------|---|-----------------------|-------------------------------------|--------------------|-------------------------------|
| 75% of Pull at Maximum Power Five Hours 4th (4S) Gear | | | | | | | | | |
| 27.8 (20.7) | 2235 (9.94) | 4.67 (7.51) | 2385 | 3.3 | 0.580 (0.353) | 12.08 (2.38) | 178 (81) | 75 (24) | 28.7 (97.3) |

MAXIMUM POWER IN SELECTED GEARS

| | | | | | | | | | |
|----------------|-----------------|-----------------|------|------|------------------|-----------------|-------------|------------|----------------|
| 2nd (2S) Gear | | | | | | | | | |
| 31.9 (23.8) | 6375 (28.35) | 1.88 (3.02) | 2373 | 15.0 | 0.580 (0.353) | 12.08 (2.38) | 180 (82) | 79 (26) | 29.4 (99.7) |
| 3rd (3S) Gear | | | | | | | | | |
| 35.1 (26.2) | 4475 (19.91) | 2.95 (4.74) | 2300 | 6.6 | 0.552 (0.336) | 12.69 (2.50) | 178 (81) | 79 (26) | 29.4 (99.7) |
| 4th (4S) Gear | | | | | | | | | |
| 35.3 (26.3) | 2975 (13.24) | 4.44 (7.15) | 2300 | 4.4 | 0.539 (0.328) | 12.99 (2.56) | 180 (82) | 79 (26) | 29.4 (99.7) |
| 5th (1F) Gear | | | | | | | | | |
| 34.9 (26.0) | 2415 (10.74) | 5.42 (8.72) | 2300 | 3.5 | 0.547 (0.333) | 12.79 (2.52) | 178 (81) | 79 (26) | 29.4 (99.7) |
| 6th (2F) Gear | | | | | | | | | |
| 31.4 (23.4) | 1435 (6.38) | 8.22 (13.23) | 2300 | 2.0 | 0.598 (0.364) | 11.73 (2.31) | 178 (81) | 79 (26) | 29.4 (99.7) |

Location of Test: Istituto Per La Meccanizzazione Agricola (IMA) Strada delle Cacce, 73-10135 Torino, Italy

Dates of Test: April - November, 1999

Manufacturer: New Holland Italia S.p.A., Viale delle Nazioni, 55-41100, Modena, Italy

FUEL and OIL: Fuel No. 2 Diesel **Specific gravity converted to 60°/60° F (15°/15°C)** 0.842 **Fuel weight** 7.01 lbs/gal (0.840 kg/l) **Oil** SAE 15W40 **API service classification** SE/CD **Oil consumption for 10 hours** 0.01 lb (6.5 gm) **Transmission and hydraulic lubricant** SAE 80W90 GL-4 **Front axle lubricant** SAE 80W90 GL-4

ENGINE: Make New Holland Diesel **Type** three cylinder vertical **Serial No.** 529-481556 **Crankshaft** lengthwise **Rated Engine speed** 2300 **Bore and stroke** 4.094" x 4.528" (104 mm x 115 mm) **Compression ratio** 18 to 1 **Displacement** 179 cu in (2930 ml) **Starting system** 12 volt **Lubrication pressure** **Air cleaner** two paper elements **Oil filter** one full flow cartridge **Oil cooler** engine coolant heat exchanger for crankcase oil **Fuel filter** one paper element **Muffler** vertical **Cooling medium temperature control** thermostat

CHASSIS: Type 2WD and front wheel assist **Serial No.** 001152084 **Tread width** rear 48.1" (1222 mm) to 75.8" (1925 mm) front: 2WD - 53.1" (1349 mm) to 77.0" (1957 mm), FWA - 50.3" (1278 mm) to 77.0" (1957 mm) **Wheel base** 2WD - 83.9" (2130 mm), FWA - 81.3" (2065 mm) **Hydraulic control system** direct engine drive **Transmission** selective gear fixed ratio **Nominal travel speeds mph (km/h)** first 1.43 (2.30) second 2.13 (3.42) third 3.13 (5.03) fourth 4.63 (7.45) fifth 5.59 (8.99) sixth 8.33 (13.40) seventh 12.24 (19.70) eighth 18.14 (29.19) reverse 1.38 (2.22), 2.06 (3.32), 3.03 (4.87), 4.49 (7.22), 5.41 (8.71), 8.07 (12.99), 11.86 (19.09), 17.88 (28.78) **Clutch** dual dry disc operated by foot pedal **Brakes** wet disc hydraulically operated by two foot pedals which can be locked together **Steering** hydrostatic **Power take-off** 540 rpm at 2198 engine rpm or 1000 rpm at 2144 engine rpm **Unladen tractor mass** 2WD - 5535 lb (2510 kg), FWA - 6395 lb (2900 kg)

DRAWBAR PERFORMANCE
BALLASTED - 2WD
FUEL CONSUMPTION CHARACTERISTICS

| Power Hp (kW) | Drawbar pull lbs (kN) | Speed mph (km/h) | Crank- shaft speed rpm | Slip % | Fuel Consumption lb/hp.hr (kg/kW.h) | Temp. °F (°C) cool- ing med | Air dry bulb | Barom. inch Hg (kPa) | |
|--|--------------------------------|------------------------|---------------------------------|-----------|---|--------------------------------------|--------------------|-------------------------------|----------------|
| 75% of Pull at Maximum Power Five Hours 4th (4S) Gear | | | | | | | | | |
| 27.5 (20.5) | 2215 (9.86) | 4.65 (7.48) | 2389 | 3.0 | 0.600 (0.365) | 11.67 (2.30) | 179 (82) | 72 (22) | 28.6 (96.9) |
| MAXIMUM POWER IN SELECTED GEARS | | | | | | | | | |
| 2nd (2S) Gear | | | | | | | | | |
| 25.2 (18.8) | 5030 (22.37) | 1.88 (3.03) | 2405 | 15.0 | 0.620 (0.377) | 11.32 (2.23) | 178 (81) | 73 (23) | 29.4 (99.6) |
| 3rd (3S) Gear | | | | | | | | | |
| 33.5 (25.0) | 4565 (20.31) | 2.75 (4.43) | 2300 | 11.4 | 0.564 (0.343) | 12.44 (2.45) | 178 (81) | 73 (23) | 29.4 (99.6) |
| 4th (4S) Gear | | | | | | | | | |
| 34.0 (25.4) | 2955 (13.15) | 4.31 (6.94) | 2300 | 6.2 | 0.554 (0.337) | 12.64 (2.49) | 176 (80) | 72 (22) | 29.4 (99.6) |
| 5th (1F) Gear | | | | | | | | | |
| 33.7 (25.1) | 2425 (10.79) | 5.21 (8.38) | 2300 | 5.1 | 0.559 (0.340) | 12.54 (2.47) | 176 (80) | 72 (22) | 29.4 (99.6) |
| 6th (2F) Gear | | | | | | | | | |
| 31.0 (23.1) | 1455 (6.47) | 7.99 (12.86) | 2300 | 3.1 | 0.612 (0.372) | 11.47 (2.26) | 176 (80) | 72 (22) | 29.4 (99.6) |

REPAIRS AND ADJUSTMENTS: No repairs or adjustments

REMARKS: All test results were determined from observed data obtained in accordance with official OECD test procedures. The performance results on this summary were taken from OECD tests conducted under the Code I Test procedure.

We, the undersigned, certify that this is a true summary of data from OECD Reports No. **1900** and **1901**, Nebraska Summary 330, December 13, 2000.

Brent T. Sampson
 Test Engineer

L.L. Bashford
 M.F. Kocher
 R.D. Grisso, Jr.
 Board of Tractor Test Engineers

TN 55D-2WD

| TIRES, BALLAST AND WEIGHT | | With Ballast | Without Ballast |
|------------------------------------|-----------------------------|--------------------------|--------------------------|
| Rear Tires | -No., size, ply & psi (kPa) | Two 14.9R28; **,23 (160) | Two 14.9R28; **,23 (160) |
| Ballast | -Liquid (total) | None | None |
| | -Cast Iron (total) | 440 lb (200 kg) | None |
| Front Tires | -No., size, ply & psi (kPa) | Two 7.50-16; 8; 54 (370) | Two 7.50-16; 8; 54 (370) |
| Ballast | -Liquid (total) | None | None |
| | -Cast Iron (total) | 660 lb (300 kg) | None |
| Height of Drawbar | | 27.4 in (695 mm) | 27.6 in (700 mm) |
| Static Weight with Operator | -Rear | 4100 lb (1860 kg) | 3705 lb (1680 kg) |
| | -Front | 2700 lb (1225 kg) | 1995 lb (905 kg) |
| | -Total | 6800 lb (3085 kg) | 5700 lb (2585 kg) |

TN 55D- FWA

| TIRES, BALLAST AND WEIGHT | | With Ballast | Without Ballast |
|------------------------------------|-----------------------------|--------------------------|--------------------------|
| Rear Tires | -No., size, ply & psi (kPa) | Two 14.9R28; **,23 (160) | Two 14.9R28; **,23 (160) |
| Ballast | -Liquid (total) | None | None |
| | -Cast Iron (total) | 440 lb (200 kg) | None |
| Front Tires | -No., size, ply & psi (kPa) | Two 11.2R20; **,23 (160) | Two 11.2R20; **,23 (160) |
| Ballast | -Liquid (total) | None | None |
| | -Cast Iron (total) | 660 lb (300 kg) | None |
| Height of Drawbar | | 17.9 in (455 mm) | 18.1 in (460 mm) |
| Static Weight with Operator | -Rear | 4620 lb (2095 kg) | 4220 lb (1915 kg) |
| | -Front | 3040 lb (1380 kg) | 2340 lb (1060 kg) |
| | -Total | 7660 lb (3475 kg) | 6560 lb (2975 kg) |

| TRACTOR SOUND LEVEL WITH CAB | FWA dB(A) | 2WD dB(A) |
|------------------------------|--------------|--------------|
| At no load in 4th(4S) gear | 79.5 | 79.5 |
| Bystander in 8th(4F) gear | 85.5 | 85.3 |

CENTER OF GRAVITY - 2WD

| | |
|--|----------------------------|
| Horizontal distance forward from centerline of rear wheels | 29.3 in (745 mm) |
| Vertical distance above roadway | 29.9 in (760 mm) |
| Horizontal distance from center of rear wheel tread | 0.4 in (10 mm) to the left |

CENTER OF GRAVITY - FWA

| | |
|--|----------------------------|
| Horizontal distance forward from centerline of rear wheels | 28.9 in (735 mm) |
| Vertical distance above roadway | 29.1 in (740 mm) |
| Horizontal distance from center of rear wheel tread | 0.4 in (10 mm) to the left |

TURNING ON A CONCRETE SURFACE (2WD)

| | |
|--|--|
| Turning radius with brake applied right 124" (3.15 m) left 124" (3.15 m) | |
| without brake right 142" (3.60 m) left 144" (3.65 m) | |
| Turning space radius with brake applied right 124" (3.15 m) left 126" (3.20 m) | |
| without brake right 142" (3.60 m) left 144" (3.65 m) | |

TURNING ON A CONCRETE SURFACE (FWA)

| | |
|--|--|
| Turning radius with brake applied right 141" (3.58 m) left 141" (3.58 m) | |
| without brake right 174" (4.42 m) left 177" (4.50 m) | |
| Turning space radius with brake applied right 144" (3.65 m) left 144" (3.65 m) | |
| without brake right 179" (4.55 m) left 180" (4.57 m) | |

THREE POINT HITCH PERFORMANCE (OECD Static Test)

CATEGORY: II

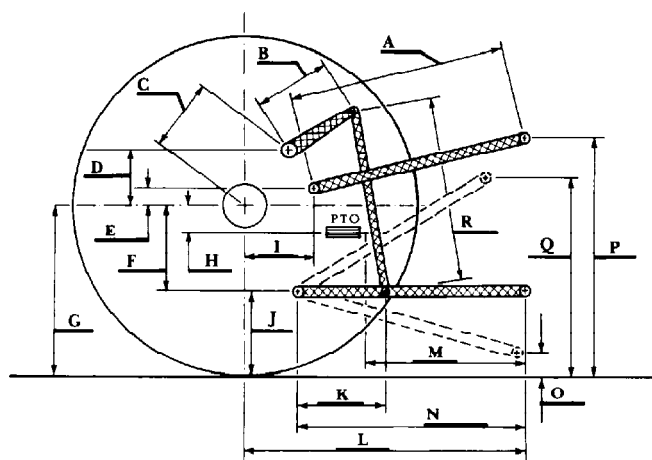
QuickAttach: None

Maximum Force Exerted Through Whole Range:

4045 lbs (18.0 kN) (at the frame)
4405 lbs (19.6 kN) (at lower link ends)

| | | |
|---|-----------------------|-------------------------|
| i) Opening pressure of relief valve: | NA | <u>High Flow Option</u> |
| Sustained pressure with relief valve open: | 3020 psi (208 bar) | 3020 psi (208 bar) |
| ii) Pump delivery rate at minimum pressure: | 12.8 GPM (48.1 l/min) | 17.1 GPM (64.9 l/min) |
| iii) Pump delivery rate at maximum hydraulic power: | 11.3 GPM (42.8 l/min) | 14.5 GPM (55.0 l/min) |
| Delivery pressure: | 2540 psi (175 bar) | 2410 psi (166 bar) |
| Power: | 16.7 HP (12.5 kW) | 20.4 HP (15.2 kW) |

HITCH DIMENSIONS AS TESTED NO LOAD



| | inch | mm |
|---|------|------|
| A | 27.6 | 700 |
| B | 10.0 | 255 |
| C | 12.3 | 312 |
| D | 10.9 | 276 |
| E | 12.1 | 308 |
| F | 7.4 | 189 |
| G | 25.2 | 640 |
| H | 1.2 | 31 |
| I | 13.4 | 340 |
| J | 17.8 | 451 |
| K | 20.6 | 523 |
| L | 40.7 | 1035 |
| M | 21.7 | 550 |
| N | 34.6 | 880 |
| O | 7.9 | 200 |
| P | 41.8 | 1061 |
| Q | 29.3 | 745 |
| R | 26.0 | 660 |