

# NEBRASKA OECD TRACTOR TEST 1803—SUMMARY 369

## JOHN DEERE 9320 DIESEL

### 18 SPEED

#### POWER TAKE-OFF PERFORMANCE

| Power<br>HP<br>(kW)                                       | Crank<br>shaft<br>speed<br>rpm | Gal/hr<br>(l/h)  | lb/hp.hr<br>(kg/kW.h) | Hp.hr/gal<br>(kW.h/l) | Mean Atmospheric<br>Conditions |
|-----------------------------------------------------------|--------------------------------|------------------|-----------------------|-----------------------|--------------------------------|
| <b>MAXIMUM POWER AND FUEL CONSUMPTION</b>                 |                                |                  |                       |                       |                                |
| <b>Rated Engine Speed—(PTO speed—1108 rpm)</b>            |                                |                  |                       |                       |                                |
| 333.43<br>(248.64)                                        | 2100                           | 18.97<br>(71.81) | 0.401<br>(0.244)      | 17.58<br>(3.46)       |                                |
| <b>Standard Power Take-off Speed—(PTO speed—1000 rpm)</b> |                                |                  |                       |                       |                                |
| 364.94<br>(272.14)                                        | 1895                           | 19.97<br>(75.61) | 0.385<br>(0.234)      | 18.27<br>(3.60)       |                                |
| <b>Maximum Power (2 hours)</b>                            |                                |                  |                       |                       |                                |
| 377.55<br>(281.54)                                        | 1799                           | 20.91<br>(79.16) | 0.390<br>(0.237)      | 18.05<br>(3.56)       |                                |

#### VARYING POWER AND FUEL CONSUMPTION

|                    |      |                  |                    |                 |                       |
|--------------------|------|------------------|--------------------|-----------------|-----------------------|
| 333.43<br>(248.64) | 2100 | 18.97<br>(71.81) | 0.401<br>(0.244)   | 17.58<br>(3.46) | Air temperature       |
| 290.94<br>(216.95) | 2156 | 17.30<br>(65.47) | 0.419<br>(0.255)   | 16.82<br>(3.31) | 74°F (23°C)           |
| 220.03<br>(164.07) | 2173 | 14.48<br>(54.83) | 0.464<br>(0.282)   | 15.19<br>(2.99) | Relative humidity     |
| 146.79<br>(109.46) | 2189 | 12.01<br>(45.48) | 0.576<br>(0.351)   | 12.22<br>(2.41) | 29%                   |
| 75.28<br>(56.13)   | 2213 | 8.48<br>(32.09)  | 0.793<br>(0.482)   | 8.88<br>(1.75)  | Barometer             |
| 1.18<br>(0.88)     | 2233 | 5.11<br>(19.35)  | 30.547<br>(18.581) | 0.23<br>(0.05)  | 29.11" Hg (98.58 kPa) |

Maximum Torque - 1262 lb.-ft. (1711 Nm) at 1200 rpm

Maximum Torque Rise - 51.3%

Torque rise at 1700 engine rpm - 40%

#### DRAWBAR PERFORMANCE (Unballasted) FUEL CONSUMPTION CHARACTERISTICS

| Power<br>Hp<br>(kW)                                 | Drawbar<br>pull<br>lbs<br>(kN) | Speed<br>mph<br>(km/h) | Crank-<br>shaft<br>speed<br>rpm | Slip<br>% | Fuel Consumption<br>lb/hp.hr<br>(kg/kW.h) | Hp.hr/gal<br>(kW.h/l) | Temp. °F (°C)<br>cool-<br>ing<br>med | Air<br>dry<br>bulb | Barom.<br>inch<br>Hg<br>(kPa) |
|-----------------------------------------------------|--------------------------------|------------------------|---------------------------------|-----------|-------------------------------------------|-----------------------|--------------------------------------|--------------------|-------------------------------|
| <b>Maximum Power—6th Gear</b>                       |                                |                        |                                 |           |                                           |                       |                                      |                    |                               |
| 304.37<br>(226.97)                                  | 25837<br>(114.93)              | 4.42<br>(7.11)         | 2097                            | 3.28      | 0.440<br>(0.268)                          | 16.02<br>(3.15)       | 178<br>(81)                          | 59<br>(15)         | 28.95<br>(98.03)              |
| <b>75% of Pull at Maximum Power—6th Gear</b>        |                                |                        |                                 |           |                                           |                       |                                      |                    |                               |
| 237.03<br>(176.75)                                  | 19317<br>(85.92)               | 4.60<br>(7.41)         | 2167                            | 2.51      | 0.485<br>(0.295)                          | 14.53<br>(2.86)       | 178<br>(81)                          | 54<br>(12)         | 29.20<br>(98.88)              |
| <b>50% of Pull at Maximum Power—6th Gear</b>        |                                |                        |                                 |           |                                           |                       |                                      |                    |                               |
| 161.22<br>(120.22)                                  | 12920<br>(57.47)               | 4.68<br>(7.53)         | 2188                            | 1.76      | 0.556<br>(0.338)                          | 12.66<br>(2.49)       | 174<br>(79)                          | 56<br>(13)         | 29.21<br>(98.92)              |
| <b>75% of Pull at Reduced Engine Speed—8th Gear</b> |                                |                        |                                 |           |                                           |                       |                                      |                    |                               |
| 237.29<br>(176.95)                                  | 19321<br>(85.94)               | 4.61<br>(7.41)         | 1755                            | 2.51      | 0.444<br>(0.270)                          | 15.88<br>(3.13)       | 177<br>(80)                          | 55<br>(13)         | 29.20<br>(98.88)              |
| <b>50% of Pull at Reduced Engine Speed—8th Gear</b> |                                |                        |                                 |           |                                           |                       |                                      |                    |                               |
| 161.34<br>(120.31)                                  | 12933<br>(57.53)               | 4.68<br>(7.53)         | 1770                            | 1.86      | 0.488<br>(0.297)                          | 14.42<br>(2.84)       | 169<br>(76)                          | 56<br>(13)         | 29.21<br>(98.92)              |

**Location of Test:** Nebraska Tractor Test Laboratory, University of Nebraska, Lincoln, Nebraska 68583-0832

**Dates of Test:** April 9 - May 31, 2002

**Manufacturer:** John Deere Tractor Works, 3500 East Donald St., P.O. Box 270, Waterloo Ia, 50704-0270

**FUEL, OIL and TIME:** Fuel No. 2 Diesel Specific gravity converted to 60°/60°F (15°/15°C) 0.8461 Fuel weight 7.045 lbs/gal (0.844 kg/l) Oil SAE 15W-40 API service classification CH-4 Transmission, hydraulic and final drive lubricant John Deere Hy-Gard fluid Total time engine was operated: 24.5 hours

**ENGINE: Make** John Deere Diesel **Type** six cylinder vertical with turbocharger and air to air aftercooler **Serial No.** \*RG6125H031928\* **Crankshaft** lengthwise **Rated engine speed** 2100 **Bore and stroke** (as specified) 5.00" x 6.50" (127.0 mm x 165.0 mm) **Compression ratio** 17.0 to 1 **Displacement** 765 cu in (12536 ml) **Starting system** 12 volt **Lubrication** pressure **Air cleaner** two paper elements and aspirator **Oil filter** one full flow cartridge **Oil cooler** engine coolant heat exchanger for crankcase oil, separate radiators for hydraulic and transmission oil, radiator for front and rear axle oil **Fuel filter** two paper cartridges **Muffler** vertical **Cooling medium temperature control** 2 thermostats and variable speed fan

**ENGINE OPERATING PARAMETERS: Fuel rate:** 126.0-138.9 lb/h (57.1-63.0 kg/h) **High idle:** 2205-2255 rpm **Turbo boost:** nominal 19.9-22.8 psi (137-157 kPa) as measured 21.1 psi (145 kPa)

**CHASSIS: Type** four wheel drive with duals **Serial No.** \*RW9320P001054\* **Tread width** rear 66.5" (1689 mm) to 142.3" (3615 mm), front 66.5" (1689 mm) to 142.3" (3615 mm) **Wheelbase** 137.8" (3500 mm) **Hydraulic control system** direct engine drive **Transmission** selective gear fixed ratio with full range operator controlled power shift **Nominal travel speeds mph (km/h)** first 2.44 (3.92) second 3.00 (4.83) third 3.32 (5.35) fourth 3.72 (5.98) fifth 4.09 (6.59) sixth 4.57 (7.36) seventh 5.06 (8.15) eighth 5.65 (9.09) ninth 6.23 (10.02) tenth 6.95 (11.19) eleventh 7.70 (12.39) twelfth 8.51 (13.69) thirteenth 9.47 (15.24) fourteenth 10.47 (16.85) fifteenth 12.94 (20.83) sixteenth 15.93 (25.63) seventeenth 19.69 (31.69) eighteenth 24.23 (39.00) reverse 2.43 (3.92), 3.32 (5.35), 3.72 (5.98), 5.06 (8.15), 5.65 (9.09), 7.70 (12.39)

## DRAWBAR PERFORMANCE

(Unballasted at 2100 rpm)

### MAXIMUM POWER IN SELECTED GEARS

| Power<br>Hp<br>(kW) | Drawbar<br>pull<br>lbs<br>(kN) | Speed<br>mph<br>(km/h) | Crank-<br>shaft<br>speed<br>rpm | Slip<br>% | Fuel Consumption<br>lb/hp.hr<br>(kg/kW.h) | Temp. °F (°C)<br>cool-<br>ing<br>med | Barom.<br>inch<br>Hg<br>(kPa) |
|---------------------|--------------------------------|------------------------|---------------------------------|-----------|-------------------------------------------|--------------------------------------|-------------------------------|
| 1st Gear            |                                |                        |                                 |           |                                           |                                      |                               |
| 234.48<br>(174.86)  | 38306<br>(170.39)              | 2.30<br>(3.69)         | 2163                            | 8.82      | 0.504<br>(0.307)                          | 13.96<br>(2.75)                      | 29.22<br>(98.95)              |
| 2nd Gear            |                                |                        |                                 |           |                                           |                                      |                               |
| 284.28<br>(211.98)  | 38050<br>(169.25)              | 2.80<br>(4.51)         | 2113                            | 7.40      | 0.462<br>(0.281)                          | 15.25<br>(3.00)                      | 29.22<br>(98.95)              |
| 3rd Gear            |                                |                        |                                 |           |                                           |                                      |                               |
| 297.58<br>(221.90)  | 35823<br>(159.35)              | 3.12<br>(5.01)         | 2101                            | 6.38      | 0.450<br>(0.274)                          | 15.64<br>(3.08)                      | 29.21<br>(98.92)              |
| 4th Gear            |                                |                        |                                 |           |                                           |                                      |                               |
| 303.09<br>(226.01)  | 32074<br>(142.67)              | 3.54<br>(5.70)         | 2100                            | 4.62      | 0.440<br>(0.268)                          | 16.01<br>(3.15)                      | 29.21<br>(98.92)              |
| 5th Gear            |                                |                        |                                 |           |                                           |                                      |                               |
| 303.20<br>(226.10)  | 28850<br>(128.33)              | 3.94<br>(6.34)         | 2099                            | 3.90      | 0.441<br>(0.268)                          | 15.96<br>(3.14)                      | 28.95<br>(98.04)              |
| 6th Gear            |                                |                        |                                 |           |                                           |                                      |                               |
| 304.37<br>(226.97)  | 25837<br>(114.93)              | 4.42<br>(7.11)         | 2097                            | 3.17      | 0.440<br>(0.268)                          | 16.02<br>(3.15)                      | 28.95<br>(98.04)              |
| 7th Gear            |                                |                        |                                 |           |                                           |                                      |                               |
| 306.68<br>(228.69)  | 23356<br>(103.89)              | 4.92<br>(7.92)         | 2101                            | 2.70      | 0.435<br>(0.265)                          | 16.20<br>(3.19)                      | 28.94<br>(98.00)              |
| 8th Gear            |                                |                        |                                 |           |                                           |                                      |                               |
| 304.89<br>(227.36)  | 20739<br>(92.25)               | 5.51<br>(8.87)         | 2099                            | 2.51      | 0.441<br>(0.268)                          | 15.97<br>(3.15)                      | 28.93<br>(97.97)              |
| 9th Gear            |                                |                        |                                 |           |                                           |                                      |                               |
| 303.01<br>(225.95)  | 18668<br>(83.04)               | 6.09<br>(9.80)         | 2098                            | 2.23      | 0.441<br>(0.268)                          | 15.97<br>(3.15)                      | 28.93<br>(97.97)              |
| 10th Gear           |                                |                        |                                 |           |                                           |                                      |                               |
| 297.69<br>(221.99)  | 16351<br>(72.73)               | 6.83<br>(10.99)        | 2100                            | 1.95      | 0.448<br>(0.273)                          | 15.72<br>(3.10)                      | 28.94<br>(98.00)              |
| 11th Gear           |                                |                        |                                 |           |                                           |                                      |                               |
| 299.85<br>(223.60)  | 14909<br>(66.32)               | 7.54<br>(12.14)        | 2096                            | 1.76      | 0.446<br>(0.271)                          | 15.79<br>(3.11)                      | 28.94<br>(98.00)              |
| 12th Gear           |                                |                        |                                 |           |                                           |                                      |                               |
| 296.72<br>(221.27)  | 13325<br>(59.27)               | 8.35<br>(13.44)        | 2097                            | 1.67      | 0.452<br>(0.275)                          | 15.60<br>(3.07)                      | 28.95<br>(98.04)              |

**Clutch** wet multiple disc hydraulically actuated by foot pedal **Brakes** wet multiple disc hydraulically actuated foot pedal **Steering** hydrostatic and articulated **Power take-off** 1000 rpm at 1895 engine rpm **Unladen tractor mass** 36560 lb (16583 kg)

**REPAIRS AND ADJUSTMENTS:** No repairs or adjustments.

**REMARKS:** All test results were determined from observed data obtained in accordance with official OECD, SAE and Nebraska test procedures. For the maximum power tests the fuel temperature at the injection pump inlet was maintained at 99°F (37°C). The pull in 1st gear was limited to avoid tractor bouncing. The performance figures on this summary were taken from a test conducted under the OECD Code II test code procedure.

We, the undersigned, certify that this is a true and correct report of official Tractor Test No. **1803**, Nebraska Summary 369, July 23, 2002.

Brent T. Sampson  
Test Engineer

L.L. Bashford  
G.J. Hoffinan  
V.I. Adamchuk  
Board of Tractor Test Engineers

### TRACTOR SOUND LEVEL WITH CAB

dB(A)

|                                       |      |
|---------------------------------------|------|
| At no load in 6th gear                | 74.3 |
| Transport speed - no load - 18th gear | 76.9 |
| Bystander in 18th gear                | 90.6 |

### TIRES, BALLAST AND WEIGHT

**Rear Tires** - No., size, ply & psi (kPa)

**Front Tires** - No., size, ply & psi (kPa)

**Height of Drawbar**

**Static Weight with operator** - Rear

- Front

- Total

### Tested Without Ballast

Four 620/70R46;\*\*\*;7(50)

Four 620/70R46;\*\*\*;11(75)

21.0 in (535 mm)

15185 lb (6888 kg)

21550 lb (9775 kg)

36735 lb (16663 kg)

**DRAWBAR PERFORMANCE**  
**(Unballasted at 1800 RPM)**  
**MAXIMUM POWER IN SELECTED GEARS**

| Power<br>Hp<br>(kW) | Drawbar<br>pull<br>lbs<br>(kN) | Speed<br>mph<br>(km/h) | Crank-<br>shaft<br>speed<br>rpm | Slip<br>% | Fuel Consumption<br>lb/hp.hr<br>(kg/kW.h) | Temp. <sup>o</sup> F(°C)<br>cool-<br>ing<br>med | Temp. <sup>o</sup> F(°C)<br>Air<br>dry<br>bulb | Barom.<br>inch<br>Hg<br>(kPa) |                  |
|---------------------|--------------------------------|------------------------|---------------------------------|-----------|-------------------------------------------|-------------------------------------------------|------------------------------------------------|-------------------------------|------------------|
| 1st Gear            |                                |                        |                                 |           |                                           |                                                 |                                                |                               |                  |
| 235.38<br>(175.53)  | 38397<br>(170.80)              | 2.30<br>(3.70)         | 2164                            | 8.65      | 0.502<br>(0.306)                          | 14.03<br>(2.76)                                 | 175<br>(79)                                    | 48<br>(9)                     | 29.22<br>(98.95) |
| 2nd Gear            |                                |                        |                                 |           |                                           |                                                 |                                                |                               |                  |
| 283.51<br>(211.41)  | 38176<br>(169.81)              | 2.78<br>(4.48)         | 2113                            | 7.82      | 0.467<br>(0.284)                          | 15.08<br>(2.97)                                 | 177<br>(81)                                    | 47<br>(8)                     | 29.22<br>(98.95) |
| 3rd Gear            |                                |                        |                                 |           |                                           |                                                 |                                                |                               |                  |
| 301.26<br>(224.65)  | 37254<br>(165.71)              | 3.03<br>(4.88)         | 2071                            | 7.57      | 0.450<br>(0.274)                          | 15.67<br>(3.09)                                 | 182<br>(83)                                    | 49<br>(9)                     | 29.22<br>(98.95) |
| 4th Gear            |                                |                        |                                 |           |                                           |                                                 |                                                |                               |                  |
| 315.03<br>(234.92)  | 36116<br>(160.65)              | 3.27<br>(5.26)         | 1980                            | 6.72      | 0.441<br>(0.268)                          | 15.96<br>(3.14)                                 | 183<br>(84)                                    | 52<br>(11)                    | 29.21<br>(98.92) |
| 5th Gear            |                                |                        |                                 |           |                                           |                                                 |                                                |                               |                  |
| 324.72<br>(242.15)  | 35938<br>(159.86)              | 3.39<br>(5.45)         | 1860                            | 6.64      | 0.436<br>(0.265)                          | 16.15<br>(3.18)                                 | 184<br>(84)                                    | 54<br>(12)                    | 29.20<br>(98.88) |
| 6th Gear            |                                |                        |                                 |           |                                           |                                                 |                                                |                               |                  |
| 334.39<br>(249.35)  | 33755<br>(150.15)              | 3.71<br>(5.98)         | 1803                            | 5.33      | 0.435<br>(0.265)                          | 16.19<br>(3.19)                                 | 184<br>(84)                                    | 59<br>(15)                    | 28.95<br>(98.04) |
| 7th Gear            |                                |                        |                                 |           |                                           |                                                 |                                                |                               |                  |
| 341.32<br>(254.52)  | 30711<br>(136.61)              | 4.17<br>(6.71)         | 1805                            | 4.17      | 0.426<br>(0.259)                          | 16.53<br>(3.26)                                 | 186<br>(85)                                    | 58<br>(14)                    | 28.95<br>(98.04) |
| 8th Gear            |                                |                        |                                 |           |                                           |                                                 |                                                |                               |                  |
| 343.01<br>(255.79)  | 27438<br>(122.05)              | 4.69<br>(7.54)         | 1802                            | 3.44      | 0.427<br>(0.260)                          | 16.49<br>(3.25)                                 | 185<br>(85)                                    | 56<br>(13)                    | 28.94<br>(98.00) |
| 9th Gear            |                                |                        |                                 |           |                                           |                                                 |                                                |                               |                  |
| 341.87<br>(254.93)  | 24707<br>(109.90)              | 5.19<br>(8.35)         | 1802                            | 3.07      | 0.428<br>(0.260)                          | 16.46<br>(3.24)                                 | 187<br>(86)                                    | 57<br>(14)                    | 28.94<br>(98.00) |
| 10th Gear           |                                |                        |                                 |           |                                           |                                                 |                                                |                               |                  |
| 338.56<br>(252.46)  | 21835<br>(97.12)               | 5.81<br>(9.36)         | 1802                            | 2.70      | 0.433<br>(0.264)                          | 16.25<br>(3.20)                                 | 186<br>(85)                                    | 52<br>(11)                    | 28.93<br>(97.97) |
| 11th Gear           |                                |                        |                                 |           |                                           |                                                 |                                                |                               |                  |
| 337.71<br>(251.83)  | 19613<br>(87.24)               | 6.46<br>(10.39)        | 1802                            | 2.33      | 0.432<br>(0.263)                          | 16.30<br>(3.21)                                 | 186<br>(85)                                    | 52<br>(11)                    | 28.93<br>(97.97) |
| 12th Gear           |                                |                        |                                 |           |                                           |                                                 |                                                |                               |                  |
| 339.44<br>(253.12)  | 17804<br>(79.20)               | 7.15<br>(11.51)        | 1803                            | 2.04      | 0.433<br>(0.263)                          | 16.28<br>(3.21)                                 | 187<br>(86)                                    | 53<br>(12)                    | 28.94<br>(98.00) |
| 13th Gear           |                                |                        |                                 |           |                                           |                                                 |                                                |                               |                  |
| 332.40<br>(247.87)  | 15599<br>(69.39)               | 7.99<br>(12.86)        | 1806                            | 1.95      | 0.437<br>(0.266)                          | 16.14<br>(3.18)                                 | 186<br>(86)                                    | 58<br>(14)                    | 28.95<br>(98.04) |
| 14th Gear           |                                |                        |                                 |           |                                           |                                                 |                                                |                               |                  |
| 335.07<br>(249.86)  | 14255<br>(63.41)               | 8.81<br>(14.19)        | 1801                            | 1.76      | 0.440<br>(0.268)                          | 16.00<br>(3.15)                                 | 187<br>(86)                                    | 59<br>(15)                    | 28.95<br>(98.04) |

### THREE POINT HITCH PERFORMANCE (OECD Static Test)

CATEGORY: III, IV

Quick Attach: yes

Maximum Force Exerted Through Whole Range: **Category III**  
 13104 lbs (58.3 kN) (Cat. III hitch)  
 14382 lbs (64.0 kN) (Cat. IV hitch)

i) Opening pressure of relief valve: NA

Sustained pressure at compensator cutoff: 2900 psi (200 bar)

**Single outlet set Two outlet sets combined**

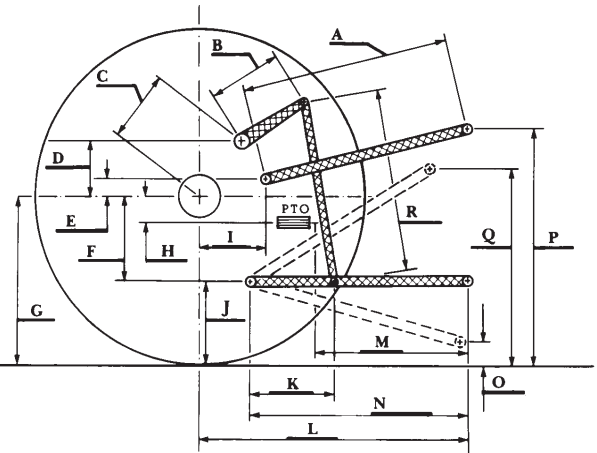
Pump delivery rate at minimum pressure and rated engine speed: 33.9 GPM (128.3 l/min) 49.1 GPM (185.9 l/min)

iii) Pump delivery rate at maximum

hydraulic power: 30.1 GPM (113.9 l/min) 46.2 GPM (174.9 l/min)

Delivery pressure: 2055 psi (142 bar) 2100 psi (145 bar)

Power: 36.0 HP (26.9 kW) 56.6 HP (42.2 kW)



### THREE POINT HITCH PERFORMANCE

Observed Maximum Pressure psi. (bar): 2950 (203)  
 Location: remote outlet  
 Hydraulic oil temperature: °F (°C): 147 (64)  
 Location: hydraulic sump  
 Category: III, IV  
 Quick attach: yes

### HITCH DIMENSIONS AS TESTED—NO LOAD

| Category III (lift cylinders - 2x90 mm)              |           |            |            |            |             |             |
|------------------------------------------------------|-----------|------------|------------|------------|-------------|-------------|
| SAE Static Test—System pressure 2575 psi (177 Bar)   |           |            |            |            |             |             |
| Hitchpoint distance to ground level in. (mm)         | 8.0 (203) | 16.0 (409) | 24.0 (610) | 32.0 (813) | 40.0 (1016) |             |
| Lift force on frame lb                               | 14589     | 14463      | 14418      | 13995      | 12978       |             |
| " " " " " " (kN)                                     | (64.9)    | (64.3)     | (64.1)     | (62.3)     | (57.7)      |             |
| ASAE Static Test—System pressure 2775 psi (191 Bar)  |           |            |            |            |             |             |
| Hitchpoint distance to ground level in. (mm)         | 8.0 (203) | 16.0 (409) | 24.0 (610) | 32.0 (813) | 40.0 (1016) |             |
| Lift force on frame lb                               | 15715     | 15580      | 15531      | 15076      | 13980       |             |
| " " " " " " (kN)                                     | (69.9)    | (69.3)     | (69.1)     | (67.1)     | (62.2)      |             |
| Category IV (lift cylinders - 1x90 mm & 1x100 mm)    |           |            |            |            |             |             |
| SAE Static Test - System pressure 2575 psi (177 Bar) |           |            |            |            |             |             |
| Hitchpoint distance to ground level in. (mm)         | 8.0 (203) | 15.2 (386) | 22.4 (569) | 29.6 (752) | 36.8 (935)  | 43.0 (1092) |
| Lift force on frame lb                               | 16074     | 15908      | 16029      | 15696      | 14994       | 13518       |
| " " " " " " (kN)                                     | (71.5)    | (70.8)     | (71.3)     | (69.8)     | (66.7)      | (60.1)      |
| ASAE Static Test—System pressure 2775 psi (191 Bar)  |           |            |            |            |             |             |
| Hitchpoint distance to ground level in. (mm)         | 8.0 (203) | 15.2 (386) | 22.4 (569) | 29.6 (752) | 36.8 (935)  | 43.0 (1092) |
| Lift force on frame lb                               | 17199     | 17020      | 17208      | 16851      | 16152       | 14562       |
| " " " " " " (kN)                                     | (76.5)    | (75.7)     | (76.6)     | (75.0)     | (71.8)      | (64.8)      |

|     | Category III |      | Category IV |      |
|-----|--------------|------|-------------|------|
|     | inch         | mm   | inch        | mm   |
| A   | 30.8         | 780  | 30.3        | 770  |
| B   | 18.6         | 472  | 18.6        | 472  |
| C   | 26.2         | 666  | 26.2        | 666  |
| D   | 24.4         | 620  | 24.4        | 620  |
| E   | 11.3         | 288  | 11.3        | 288  |
| F   | 13.8         | 350  | 13.8        | 350  |
| G   | 35.6         | 905  | 35.6        | 905  |
| H   | 4.8          | 122  | 4.8         | 122  |
| I   | 22.7         | 577  | 22.7        | 577  |
| J   | 21.9         | 555  | 21.8        | 555  |
| K   | 28.8         | 731  | 28.3        | 718  |
| L   | 55.3         | 1405 | 54.5        | 1384 |
| *L' | 61.8         | 1570 | 60.5        | 1537 |
| M   | 25.4         | 645  | 24.6        | 625  |
| N   | 44.0         | 1117 | 43.2        | 1097 |
| O   | 8.0          | 203  | 8.0         | 203  |
| P   | 48.6         | 1234 | 48.6        | 1234 |
| Q   | 39.1         | 993  | 39.0        | 991  |
| R   | 44.8         | 1137 | 45.0        | 1143 |

\*L' to Quick Attach ends



**JOHN DEERE 9320 DIESEL**

Agricultural Research Division  
 Institute of Agriculture and Natural Resources  
 University of Nebraska-Lincoln  
 Darrell Nelson, Dean and Director