

SUMMARY OF OECD TEST 2806A–NEBRASKA SUMMARY 949 CASE IH FARMALL 95U DIESEL 12 SPEED

POWER TAKE-OFF PERFORMANCE

Power HP (kW)	Crank shaft speed rpm	Gal/hr (l/h)	lb/hp.hr (kg/kW.h)	Hp.hr/gal (kW.h/l)	Mean Atmospheric Conditions
MAXIMUM POWER AND FUEL CONSUMPTION					
Rated Engine Speed—(PTO speed—1194 rpm)					
89.6 (66.8)	2300	5.42 (20.53)	0.422 (0.257)	16.52 (3.25)	
Standard Power Take-off Speed (1000 rpm)					
93.3 (69.6)	1926	5.28 (19.98)	0.395 (0.240)	17.66 (3.48)	
Maximum Power - (1 hour)					
93.3 (69.6)	1926	5.28 (19.98)	0.395 (0.240)	17.66 (3.48)	
VARYING POWER AND FUEL CONSUMPTION					
89.6 (66.8)	2300	5.42 (20.53)	0.422 (0.257)	16.52 (3.25)	Air temperature
76.8 (57.3)	2321	4.80 (18.16)	0.436 (0.265)	16.02 (3.16)	69°F (21°C)
58.5 (43.6)	2344	3.98 (15.05)	0.473 (0.288)	14.72 (2.90)	Relative humidity
39.3 (29.3)	2371	2.94 (11.14)	0.522 (0.318)	13.34 (2.63)	29%
19.8 (14.8)	2394	2.01 (7.60)	0.704 (0.428)	9.90 (1.95)	Barometer
--	2408	1.64 (6.22)	--	--	28.8" Hg (97.4 kPa)

Maximum Torque - 281.8 lb.-ft. (382.1 Nm) at 1500 rpm
 Maximum Torque Rise - 37.8%
 Torque rise at 1800 engine rpm - 31%
 Power increase at 1926 rpm - 4.1%

DRAWBAR PERFORMANCE (Unballasted - Front Drive Engaged)

FUEL CONSUMPTION CHARACTERISTICS

Power Hp (kW)	Drawbar pull lbs (kN)	Speed mph (km/h)	Crank- shaft speed rpm	Slip %	Fuel Consumption lb/hp.hr (kg/kW.h)	Hp.hr/gal (kW.h/l)	Temp.°F (°C) cool- ing med	Air dry bulb	Barom. inch Hg (kPa)
Maximum Power—6th (2M) Gear									
65.2 (48.6)	6270 (27.9)	3.90 (6.27)	2300	3.4	0.599 (0.364)	11.63 (2.29)	181 (83)	86 (30)	30.1 (101.9)
75% of Pull at Maximum Power—6th (2M) Gear									
50.8 (37.9)	4725 (21.0)	4.03 (6.49)	2335	1.4	0.673 (0.409)	10.36 (2.04)	180 (82)	86 (30)	30.1 (101.9)
50% of Pull at Maximum Power—6th (2M) Gear									
34.7 (25.9)	3150 (14.0)	4.14 (6.66)	2361	1.0	0.730 (0.444)	9.54 (1.88)	178 (81)	86 (30)	30.1 (101.9)
75% of Pull at Reduced Engine Speed—7th (3M) Gear									
50.4 (37.6)	4715 (21.0)	4.01 (6.45)	1611	1.5	0.538 (0.327)	12.94 (2.55)	178 (81)	88 (31)	30.1 (101.9)
50% of Pull at Reduced Engine Speed—7th (3M) Gear									
34.9 (26.0)	3150 (14.0)	4.15 (6.68)	1645	0.9	0.608 (0.370)	11.46 (2.26)	176 (80)	88 (31)	30.1 (101.9)

Location of tests: Istituto per le Macchine Agricole e Movimento Terra 73, Strada delle Cacce 10135 Torino Italy

Dates of tests: March to August, 2013.

Manufacturer: CNH Europe Holding S.A. 24, Boulevard Royal L-2449 Luxembourg

FUEL and OIL: Fuel No. 2 Diesel **Specific gravity converted to 60°/60°F (15°/15°C)** 0.837 **Fuel weight** 6.97 lbs/gal (0.835 kg/l) **Oil SAE 15W40 API service classification** CJ-4 **Transmission and hydraulic lubricant** Akcela Nexplore fluid **Front axle lubricant** Akcela Nexplore fluid

ENGINE: Make FPT Industrial Diesel **Type** four cylinder vertical with turbocharger and air to air intercooler **Serial No.** 000128879 **Crankshaft** lengthwise **Rated engine speed** 2300 **Bore and stroke** 3.898" x 4.331" (99.0 mm x 110.0 mm) **Compression ratio** 17.5 to 1 **Displacement** 207 cu in (3387 ml) **Starting system** 12 volt **Lubrication** pressure **Air cleaner** two paper elements and aspirator **Oil filter** one full flow cartridge **Oil cooler** engine coolant heat exchanger for crankcase oil, radiator for hydraulic and transmission oil **Fuel filter** one paper element **Exhaust** regenerative particulate filter integrated within an underhood muffler with vertical outlet **Cooling medium temperature control** thermostat and variable speed fan

CHASSIS: **Type** front wheel assist **Serial No.** ZDJM00478 **Tread width** rear 56.5" (1434 mm) to 84.2" (2138 mm) front 56.7" (1441 mm) to 84.8" (2153 mm) **Wheelbase** 92.5" (2350 mm) **Hydraulic control system** direct engine drive **Transmission** selective gear fixed ratio **Nominal travel speeds mph (km/h)** first 1.16 (1.87) second 1.69 (2.72) third 2.44 (3.92) fourth 2.72 (4.37) fifth 3.49 (5.61) sixth 3.95 (6.35) seventh 5.69 (9.15) eighth 6.39 (10.28) ninth 8.14 (13.11) tenth 9.29 (14.95) eleventh 13.38 (21.54) twelfth 19.16 (30.84) reverse 1.14 (1.83), 1.65 (2.66), 2.39 (3.84), 2.66 (4.28), 3.42 (5.50), 3.87 (6.22), 5.57 (8.97), 6.26 (10.08), 7.98 (12.84), 9.10 (14.64), 13.12 (21.11), 18.79 (30.24) **Clutch** wet disc hydraulically actuated by foot pedal **Brakes** wet disc hydraulically actuated by two foot pedals that can be locked together **Steering** hydrostatic **Power take-off** 540 rpm at 1938 engine rpm or 1000 rpm at 1926 engine rpm **Unladen tractor mass** 9350 lb (4240 kg)

DRAWBAR PERFORMANCE

(Unballasted - Front Drive Engaged) MAXIMUM POWER IN SELECTED GEARS

Power Hp (kW)	Drawbar pull lbs (kN)	Speed mph (km/h)	Crank- shaft speed rpm	Slip %	Fuel Consumption lb/hp.hr (kg/kW.h)	Consumption Hp.hr/gal (kW.h/l)	Temp. °F(°C) cool- ing med	Air dry bulb	Barom. inch Hg (kPa)
3rd(3L) Gear									
47.2 (35.2)	8095 (36.0)	2.19 (3.52)	2335	15.0	0.635 (0.386)	10.98 (2.16)	176 (80)	81 (27)	30.1 (101.9)
4th(1M) Gear									
51.0 (38.0)	7665 (34.1)	2.49 (4.01)	2329	12.1	0.636 (0.387)	10.96 (2.16)	176 (80)	86 (30)	30.1 (101.9)
5th(4L) Gear									
61.0 (45.5)	7735 (34.4)	2.96 (4.76)	2158	12.4	0.624 (0.380)	11.17 (2.20)	180 (82)	86 (30)	30.1 (101.9)
6th(2M) Gear									
67.2 (50.1)	7620 (33.9)	3.31 (5.32)	2013	6.4	0.581 (0.353)	12.00 (2.36)	178 (81)	79 (26)	30.1 (101.9)
7th(3M) Gear									
70.4 (52.5)	5505 (24.5)	4.80 (7.72)	1930	1.7	0.547 (0.333)	12.74 (2.51)	180 (82)	79 (26)	30.1 (101.9)
8th(1H) Gear									
71.3 (53.2)	4855 (21.6)	5.51 (8.87)	1953	1.2	0.545 (0.331)	12.79 (2.52)	180 (82)	79 (26)	30.1 (101.9)
9th(4M) Gear									
68.8 (51.3)	3710 (16.5)	6.96 (11.20)	1945	1.1	0.558 (0.339)	12.49 (2.46)	180 (82)	79 (26)	30.1 (101.9)
10th(2H) Gear									
67.9 (50.6)	3195 (14.2)	7.97 (12.82)	1954	1.0	0.559 (0.340)	12.46 (2.45)	180 (82)	79 (26)	30.1 (101.9)
11th(3H) Gear									
63.4 (47.3)	2065 (9.2)	11.50 (18.51)	1954	0.9	0.580 (0.353)	12.02 (2.37)	181 (83)	79 (26)	30.1 (101.9)

REPAIRS AND ADJUSTMENTS: No repairs or adjustments.

NOTE: The performance results on this report were obtained from tests carried out on the New Holland T5.95 Diesel.

REMARKS: All test results were determined from observed data obtained in accordance with official OECD test procedures. This tractor did not meet the manufacturer's remote hydraulic flow claim of 17.2 GPM (65 lpm). The manufacturer's remote hydraulic flow claim of 22.2 GPM (84 l/min) with optional pump was not verified. The performance figures on this summary were taken from a test conducted under the OECD Code 2 test procedure.

We, the undersigned, certify that this is a true summary of data from OECD Report No. **2806A**, Nebraska Summary 949, July 11, 2014.

Roger M. Hoy
Director

M.F. Kocher
S. Pitla
P.J. Jasa
Board of Tractor Test Engineers

TRACTOR SOUND LEVEL WITH CAB	Front Wheel Drive	
	Engaged dB(A)	Disengaged dB(A)
At no load in 6th (2M) gear	74.4	74.2
Bystander in 12th (4H) gear		81.0

TIRES, BALLAST AND WEIGHT

	With Ballast	Without Ballast
Rear Tires -No., size, ply & psi (kPa)	Two 460/85R34;**,12(80)	Two 460/85R34;**,12(80)
Ballast - Liquid (total)	None	None
- Cast Iron (total)	440 lb (200 kg)	None
Front Tires -No., size, ply & psi (kPa)	Two 380/85R24;**,12(80)	Two 380/85R24;**,12(80)
Ballast - Liquid (total)	None	None
- Cast Iron (total)	970 lb (440 kg)	None
Height of Drawbar	18.7 in (475 mm)	18.9 in (480 mm)
Static Weight with operator - Rear	6010 lb (2725 kg)	5710 lb (2590 kg)
- Front	4915 lb (2230 kg)	3805 lb (1725 kg)
- Total	10925 lb (4955 kg)	9515 lb (4315 kg)

DRAWBAR PERFORMANCE
(Ballasted - Front Drive Engaged)
MAXIMUM POWER IN SELECTED GEARS

Power Hp (kW)	Drawbar pull lbs (kN)	Speed mph (km/h)	Crank- shaft speed rpm	Slip %	Fuel Consumption lb/hp.hr (kg/kW.h)	Consumption Hp.hr/gal (kW.h/l)	Temp. °F(°C) cool- ing med	Air dry bulb	Barom. inch Hg (kPa)
4th(1M) Gear									
57.4 (42.8)	8950 (39.8)	2.41 (3.87)	2311	15.0	0.683 (0.416)	10.20 (2.01)	181 (83)	82 (28)	30.0 (101.6)
5th(4L) Gear									
66.0 (49.2)	8400 (37.4)	2.95 (4.74)	2046	7.1	0.598 (0.364)	11.66 (2.30)	181 (83)	82 (28)	30.0 (101.6)
6th(2M) Gear									
70.3 (52.4)	8095 (36.0)	3.26 (5.24)	1937	3.7	0.556 (0.338)	12.54 (2.47)	178 (81)	82 (28)	30.0 (101.6)
7th(3M) Gear									
70.5 (52.6)	5485 (24.4)	4.82 (7.76)	1929	1.4	0.519 (0.316)	13.43 (2.65)	178 (81)	84 (29)	30.0 (101.6)
8th(1H) Gear									
71.1 (53.0)	4900 (21.8)	5.44 (8.76)	1935	1.3	0.552 (0.336)	12.63 (2.49)	183 (84)	84 (29)	30.0 (101.6)
9th(4M) Gear									
67.9 (50.6)	3645 (16.2)	6.98 (11.24)	1956	1.2	0.565 (0.344)	12.33 (2.43)	176 (80)	82 (28)	30.0 (101.6)
10th(2H) Gear									
67.7 (50.5)	3190 (14.2)	7.96 (12.81)	1954	1.1	0.572 (0.348)	12.18 (2.40)	180 (82)	86 (30)	30.0 (101.6)

HYDRAULIC PERFORMANCE

CATEGORY: II

Quick Attach: None

OECD Static test

Maximum force exerted through whole range: 6520 lbs (29.0 kN)

i) Sustained pressure of the open relief valve: 2800 psi (193 bar)

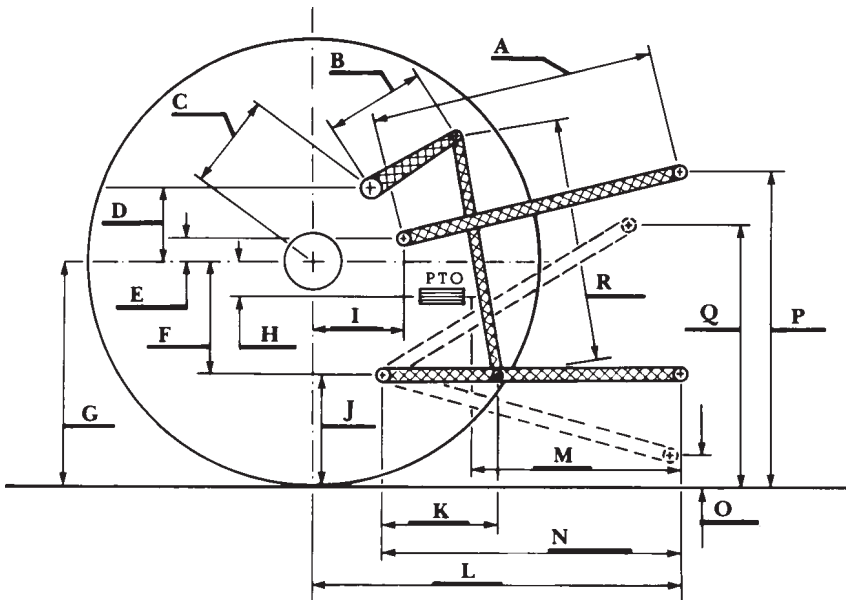
ii) Pump delivery rate at minimum pressure: 16.7 GPM (63.3 l/min)

iii) Pump delivery rate at maximum

hydraulic power: 15.2 GPM (57.5 l/min)

Delivery pressure: 2395 psi (165 bar)

Power: 21.2 HP (15.8 kW)



HITCH DIMENSIONS AS TESTED—NO LOAD

	inch	mm
A	26.7	677
B	10.0	255
C	13.9	352
D	11.7	296
E	10.1	257
F	8.3	210
G	31.5	800
H	1.6	41
I	16.7	424
J	23.2	590
K	17.9	455
L	42.6	1083
M	22.1	562
N	37.5	953
O	7.9	200
P	47.2	1200
Q	36.1	918
R	25.4	645