

# SUMMARY OF OECD TEST 1802-NEBRASKA SUMMARY 278

## MASSEY FERGUSON 4245 DIESEL

### ALSO MASSEY FERGUSON 4243 DIESEL

### ALSO MASSEY FERGUSON 4345 DIESEL

## 12 SPEED

#### POWER TAKE-OFF PERFORMANCE (540 RPM Shaft)

Power HP (kW)	Crank shaft speed rpm	Gal/hr (l/h)	lb/hp.hr (kg/kW.h)	Hp.hr/gal (kW.h/l)	Mean Atmospheric Conditions
<b>MAXIMUM POWER AND FUEL CONSUMPTION</b>					
<b>Rated Engine Speed—(PTO speed-625 rpm)</b>					
73.1 (54.5)	2201	5.07 (19.18)	0.485 (0.295)	14.42 (2.84)	
<b>Maximum Power (2 hours)</b>					
75.2 (56.1)	1941	4.74 (17.94)	0.440 (0.268)	15.88 (3.13)	
<b>Standard Power Take-off Speed (540 rpm)</b>					
74.8 (55.8)	1903	4.67 (17.66)	0.435 (0.265)	16.04 (3.16)	

#### VARYING POWER AND FUEL CONSUMPTION

73.1 (54.5)	2201	5.07 (19.18)	0.485 (0.295)	14.42 (2.84)	Air temperature
63.6 (47.4)	2250	4.70 (17.78)	0.517 (0.314)	13.52 (2.66)	82°F (28°C)
48.3 (36.0)	2280	4.01 (15.17)	0.580 (0.353)	12.03 (2.37)	Relative humidity
32.5 (24.2)	2299	3.38 (12.79)	0.727 (0.442)	9.60 (1.89)	34%
16.4 (12.2)	2316	2.63 (9.96)	1.125 (0.684)	6.22 (1.22)	Barometer
--	2333	1.77 (6.69)	--	--	30.1" Hg (101.8 kPa)

Maximum Torque -232.8 lb.-ft. (315.7 Nm) at 1288 rpm

Maximum Torque Rise -33.5%

Torque rise at 1800 engine rpm -26%

#### POWER TAKE-OFF PERFORMANCE (1000 RPM Shaft)

Power HP (kW)	Crank shaft speed rpm	Gal/hr (l/h)	lb/hp.hr (kg/kW.h)	Hp.hr/gal (kW.h/l)	Mean Atmospheric Conditions
<b>MAXIMUM POWER AND FUEL CONSUMPTION</b>					
<b>Rated Engine Speed—(PTO speed—1098 rpm)</b>					
75.2 (56.1)	2197	5.06 (19.17)	0.471 (0.286)	14.84 (2.92)	
<b>Standard Power Take-off Speed (1001 rpm)</b>					
77.5 (57.8)	2002	4.84 (18.32)	0.436 (0.265)	16.02 (3.16)	
<b>Maximum Power (2 hours)</b>					
77.9 (58.1)	1944	4.76 (18.00)	0.426 (0.259)	16.38 (3.23)	

#### VARYING POWER AND FUEL CONSUMPTION

75.2 (56.1)	2197	5.06 (19.17)	0.471 (0.286)	14.84 (2.92)	Air temperature
65.4 (48.8)	2249	4.70 (17.80)	0.503 (0.306)	13.88 (2.74)	79°F (26°C)
49.6 (37.0)	2278	4.00 (15.16)	0.564 (0.343)	12.39 (2.44)	Relative humidity
33.5 (25.0)	2299	3.38 (12.81)	0.706 (0.429)	9.90 (1.95)	32%
16.9 (12.6)	2316	2.64 (10.00)	1.093 (0.665)	6.39 (1.26)	Barometer
--	2332	1.82 (6.90)	--	--	30.1" Hg (101.8 kPa)

Maximum Torque -241.3 lb.-ft. (327.1 Nm) at 1290 rpm

Maximum Torque Rise -34.2%

Torque rise at 1800 engine rpm -26%

**Location of tests:** Silsoe Research Institute, Wrest Park, Silsoe, Bedford, England MK45 4HS

**Dates of tests:** June to November, 1998

**Manufacturer:** AGCO Limited, P.O. Box 62, Banner Lane, Coventry, West Midlands, England CV4 9GF

**FUEL and OIL:** Fuel No. 2 Diesel Specific gravity converted to 60°/60°F (15°/15°C) 0.839 Fuel weight 6.98 lbs/gal (0.837 kg/l) Oil SAE 15W-30 API service classification CD Transmission and hydraulic lubricant SAE 15W-30 Front axle lubricant SAE 15W-30

**ENGINE:** Make Perkins Diesel Type four cylinder vertical with turbocharger Serial No. U818783C Crankshaft lengthwise Rated engine speed 2200 Bore and stroke 3.937" x 5.00" (100.0 mm x 127.0 mm) Compression ratio 17.3 to 1 Displacement 243 cu in (3990 ml) Starting system 12 volt Lubrication pressure Air cleaner two paper elements Oil filter one full flow cartridge Oil cooler engine coolant heat exchanger for crankcase oil, radiator for hydraulic and transmission oil Fuel filter one paper element Muffler underhood Exhaust vertical Cooling medium temperature control thermostat

**CHASSIS:** Type front wheel assist Serial No. ABCD24ABXAE11999 Tread width rear 60.4" (1535 mm) to 83.9" (2130 mm) front 63.4" (1610 mm) to 75.4" (1915 mm) Wheelbase 92.5" (2350 mm) Hydraulic control system direct engine drive Transmission selective gear fixed ratio Nominal travel speeds mph (km/h) first 1.37 (2.21) second 1.80 (2.89) third 2.36 (3.80) fourth 3.09 (4.97) fifth 3.88 (6.24) sixth 5.07 (8.16) seventh 6.66 (10.71) eighth 8.71 (14.02) ninth 10.48 (16.86) tenth 13.69 (22.03) eleventh 17.96 (28.91) twelfth 23.53 (37.86) reverse 1.40 (2.25), 1.83 (2.94), 2.40 (3.86), 3.14 (5.06), 3.95 (6.35), 5.16 (8.30), 6.77 (10.90), 8.87 (14.27), 10.65 (17.15), 13.93 (22.41), 18.28 (29.42), 23.94 (38.53) Clutch single dry disc operated by foot pedal Brakes multiple wet disc hydraulically operated by two foot pedals that can be locked together Steering hydrostatic Power take-off single speed - 540 rpm at 1789 engine rpm, dual speed - 540 rpm at 1902 engine rpm or 1000 rpm at 2000 engine rpm Unladen tractor mass 8225 lb (3730 kg)

**DRAWBAR PERFORMANCE**  
**(Unballasted-Front Drive Engaged)**  
**FUEL CONSUMPTION CHARACTERISTICS**

Power Hp (kW)	Drawbar pull lbs (kN)	Speed mph (km/h)	Crank- shaft speed rpm	Slip %	Fuel Consumption lb/hp.hr (kg/kW.h)	Consumption Hp.hr/gal (kW.h/l)	Temp. °F (°C) cool- ing med	Air dry bulb	Barom. inch Hg (kPa)
<b>Maximum Power—6th (2M) Gear</b>									
63.2 (47.1)	4775 (21.2)	4.96 (7.98)	2202	4.1	0.573 (0.349)	12.18 (2.40)	185 (85)	46 (8)	29.6 (100.3)
<b>75% of Pull at Maximum Power—6th (2M) Gear</b>									
48.9 (36.5)	3565 (15.9)	5.15 (8.28)	2261	3.1	0.648 (0.394)	10.77 (2.12)	185 (85)	46 (8)	29.6 (100.3)
<b>50% of Pull at Maximum Power—6th (2M) Gear</b>									
33.4 (24.9)	2385 (10.6)	5.25 (8.45)	2289	2.2	0.794 (0.483)	8.79 (1.73)	185 (85)	46 (8)	29.6 (100.3)
<b>75% of Pull at Reduced Engine Speed—7th (3M) Gear</b>									
48.9 (36.5)	3565 (15.9)	5.15 (8.28)	1725	3.1	0.523 (0.318)	13.35 (2.63)	182 (83)	45 (7)	29.6 (100.3)
<b>50% of Pull at Reduced Engine Speed—7th (3M) Gear</b>									
33.3 (24.8)	2385 (10.6)	5.24 (8.44)	1742	2.2	0.603 (0.367)	11.57 (2.28)	184 (84)	45 (7)	29.6 (100.3)

**MAXIMUM POWER IN SELECTED GEARS**

<b>1st (1L) Gear</b>									
29.7 (22.2)	8950 (39.8)	1.24 (2.00)	2294	15.0	0.866 (0.527)	8.06 (1.59)	185 (85)	46 (8)	29.6 (100.3)
<b>2nd (2L) Gear</b>									
39.0 (29.1)	8790 (39.1)	1.66 (2.68)	2281	12.4	0.736 (0.448)	9.49 (1.87)	185 (85)	46 (8)	29.6 (100.3)
<b>3rd (3L) Gear</b>									
50.6 (37.7)	8630 (38.4)	2.20 (3.53)	2255	10.8	0.649 (0.395)	10.76 (2.12)	185 (85)	46 (8)	29.6 (100.3)
<b>4th (4L) Gear</b>									
61.4 (45.8)	8070 (35.9)	2.85 (4.59)	2182	8.5	0.583 (0.354)	11.99 (2.36)	185 (85)	46 (8)	29.6 (100.3)
<b>5th (1M) Gear</b>									
65.2 (48.6)	7260 (32.3)	3.37 (5.42)	2004	6.3	0.527 (0.321)	13.25 (2.61)	183 (84)	46 (8)	29.6 (100.3)
<b>6th (2M) Gear</b>									
66.0 (49.2)	5720 (25.4)	4.33 (6.96)	1935	4.7	0.511 (0.311)	13.65 (2.69)	183 (84)	46 (8)	29.6 (100.3)
<b>7th (3M) Gear</b>									
65.4 (48.8)	4250 (18.9)	5.77 (9.28)	1942	3.6	0.517 (0.315)	13.50 (2.66)	183 (84)	48 (9)	29.6 (100.3)
<b>8th (4M) Gear</b>									
64.4 (48.0)	3180 (14.2)	7.59 (12.22)	1936	2.8	0.525 (0.319)	13.30 (2.62)	183 (84)	46 (8)	29.6 (100.3)
<b>9th (1H) Gear</b>									
63.6 (47.4)	2600 (11.6)	9.17 (14.76)	1937	2.3	0.533 (0.324)	13.10 (2.58)	183 (84)	46 (8)	29.6 (100.3)

**TIRES AND WEIGHT**

Rear Tires—No., size, ply & psi (kPa)  
 Front Tires—No., size, ply & psi (kPa)

Height of Drawbar  
 Static Weight with operator  
 —Rear  
 —Front  
 —Total

**Tested Without Ballast**

Two 18.4R34; \*\*,12(83)  
 Two 14.9R24; \*\*,15(103)

20.7 in (525 mm)  
 5010 lb (2272 kg)  
 3380 lb (1533 kg)  
 8390 lb (3805 kg)

**REPAIRS AND ADJUSTMENTS:** No repairs or adjustments.

**REMARKS:** All test results were determined from observed data obtained in accordance with official OECD test procedures. This tractor did not meet the manufacturer's 3 point lift capacity claim of 6614 lbs (3000 kg) at lower link ends. The performance results on this summary were taken from a test conducted under the OECD Code 2 test procedure.

**Report reissued:** Supplemental sales permit for Massey Ferguson 4243 Diesel, July, 2000.

**Report reissued:** Supplemental sales permit for Massey Ferguson 4345 Diesel, April, 2002.

We, the undersigned, certify that this is a true summary of data from OECD Report No. **1802**, Nebraska Summary 278, April 16, 2002.

Brent T. Sampson  
 Test Engineer

L.L. Bashford  
 M.F. Kocher  
 V.I. Adamchuk  
 Board of Tractor Test Engineers

**DRAWBAR PERFORMANCE**  
**(Unballasted - Front Drive Disengaged)**  
**FUEL CONSUMPTION CHARACTERISTICS**

Power Hp (kW)	Drawbar pull lbs (kN)	Speed mph (km/h)	Crank- shaft speed rpm	Slip %	Fuel Consumption lb/hp.hr (kg/kW.h)	Temp. °F (°C) cool- ing med	Air dry bulb	Barom. inch Hg (kPa)	
<b>Maximum Power—6th (2M) Gear</b>									
63.0 (47.0)	4900 (21.8)	4.82 (7.76)	2198	4.5	0.573 (0.349)	12.18 (2.40)	185 (85)	48 (9)	29.7 (100.5)
<b>75% of Pull at Maximum Power—6th (2M) Gear</b>									
49.2 (36.7)	3665 (16.3)	5.03 (8.10)	2265	3.3	0.644 (0.392)	10.84 (2.13)	185 (85)	50 (10)	29.7 (100.5)
<b>50% of Pull at Maximum Power—6th (2M) Gear</b>									
33.7 (25.1)	2460 (10.9)	5.14 (8.27)	2290	2.3	0.784 (0.477)	8.90 (1.75)	185 (85)	48 (9)	29.7 (100.5)
<b>75% of Pull at Reduced Engine Speed—7th (3M) Gear</b>									
49.2 (36.7)	3665 (16.3)	5.03 (8.10)	1728	3.4	0.517 (0.314)	13.51 (2.66)	183 (84)	54 (12)	29.6 (100.4)
<b>50% of Pull at Reduced Engine Speed—7th (3M) Gear</b>									
33.5 (25.0)	2450 (10.9)	5.13 (8.26)	1744	2.5	0.591 (0.359)	11.83 (2.33)	181 (83)	54 (12)	29.6 (100.4)

**MAXIMUM POWER IN SELECTED GEARS**

1st (1L) Gear									
21.9 (16.3)	6745 (30.0)	1.22 (1.96)	2302	14.9	1.045 (0.636)	6.68 (1.32)	185 (85)	52 (11)	29.6 (100.4)
2nd (2L) Gear									
29.0 (21.6)	6565 (29.2)	1.66 (2.67)	2290	11.0	0.860 (0.523)	8.12 (1.60)	185 (85)	52 (11)	29.6 (100.4)
3rd (3L) Gear									
38.0 (28.3)	6520 (29.0)	2.18 (3.51)	2276	10.2	0.730 (0.444)	9.57 (1.88)	185 (85)	52 (11)	29.6 (100.4)
4th (4L) Gear									
48.5 (36.2)	6360 (28.3)	2.86 (4.60)	2255	9.4	0.655 (0.399)	10.66 (2.10)	185 (85)	54 (12)	29.6 (100.4)
5th (1M) Gear									
59.5 (44.4)	6315 (28.1)	3.53 (5.68)	2217	9.5	0.598 (0.364)	11.67 (2.30)	185 (85)	52 (11)	29.7 (100.5)
6th (2M) Gear									
64.1 (47.8)	5560 (24.7)	4.32 (6.96)	2009	6.4	0.531 (0.323)	13.15 (2.59)	185 (85)	54 (12)	29.6 (100.4)
7th (3M) Gear									
64.7 (48.3)	4325 (19.2)	5.61 (9.03)	1938	4.0	0.519 (0.316)	13.45 (2.65)	183 (84)	50 (10)	29.7 (100.5)
8th (4M) Gear									
64.0 (47.7)	3215 (14.3)	7.46 (12.01)	1946	2.9	0.526 (0.320)	13.29 (2.62)	183 (84)	50 (10)	29.7 (100.5)
9th (1H) Gear									
63.5 (47.4)	2665 (11.8)	8.94 (14.39)	1933	2.5	0.527 (0.321)	13.25 (2.61)	183 (84)	50 (10)	29.7 (100.5)

<b>TRACTOR SOUND LEVEL WITH CAB</b>	<b>Front Wheel Drive</b>	
	<b>Disengaged dB(A)</b>	<b>Engaged dB(A)</b>
Maximum sound level in 6th(2M) gear	83.0	83.0
Bystander in 12th(4H) gear	85.0	--

### THREE POINT HITCH PERFORMANCE (OECD Static Test)

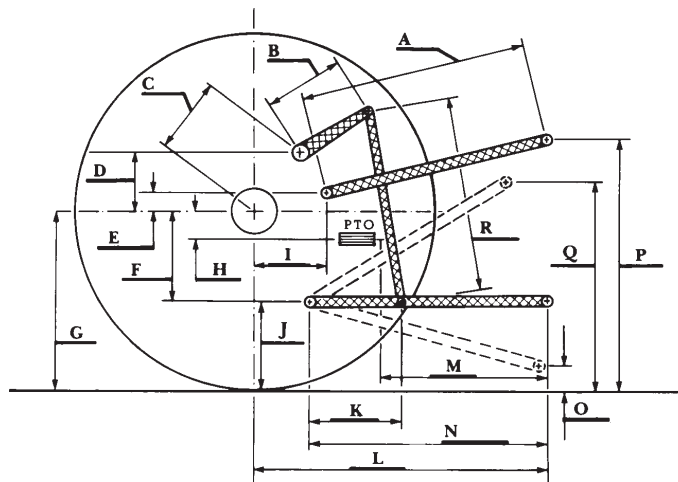
CATEGORY: II

Quick Attach: None

Maximum Force Exerted Through Whole Range: 5620 lbs (25.0 kN) (at the frame)  
6270 lbs (27.9 kN) (at the hitch points)

- i) Opening pressure of relief valve: NA
- Sustained pressure of the open relief valve: 3135 psi (216 bar)
- ii) Pump delivery rate at minimum pressure: 10.2 GPM (38.8 l/min)
- iii) Pump delivery rate at maximum
  - hydraulic power: 9.6 GPM (36.3 l/min)
  - Delivery pressure: 2755 psi (190 bar)
  - Power: 15.4 HP (11.5 kW)

HITCH DIMENSIONS AS TESTED—NO LOAD



	inch	mm
A	32.1	815
B	12.2	310
C	12.0	304
D	9.2	233
E	8.1	205
F	8.3	212
G	30.3	770
H	5.5	140
I	7.3	186
J	22.0	558
K	24.8	630
L	40.1	1018
M	27.0	685
N	41.3	1050
O	7.6	192
P	46.0	1168
Q	35.0	890
R	29.9	760