

SUMMARY OF OECD TEST 1731-NEBRASKA SUMMARY 322

MASSEY FERGUSON 4260 DIESEL

ALSO MASSEY FERGUSON 4263 DIESEL

12 SPEED

POWER TAKE-OFF PERFORMANCE

Power HP (kW)	Crank shaft speed rpm	Gal/hr (l/h)	lb/hp.hr (kg/kW.h)	Hp.hr/gal (kW.h/l)	Mean Atmospheric Conditions
MAXIMUM POWER AND FUEL CONSUMPTION					
Rated Engine Speed—(PTO speed—1103 rpm)					
94.4 (70.4)	2205	5.81 (21.98)	0.431 (0.262)	16.24 (3.20)	
Maximum Power (2 hours)					
94.9 (70.8)	2160	5.74 (21.74)	0.424 (0.258)	16.50 (3.25)	
Standard Power Take-off Speed (1000 rpm)					
92.7 (69.1)	2000	5.38 (20.37)	0.408 (0.248)	17.21 (3.39)	

VARYING POWER AND FUEL CONSUMPTION

94.4 (70.4)	2205	5.81 (21.98)	0.431 (0.262)	16.24 (3.20)	Air temperature
81.5 (60.8)	2237	5.14 (19.47)	0.442 (0.269)	15.84 (3.12)	79°F (26°C)
61.7 (46.0)	2257	4.20 (15.90)	0.477 (0.290)	14.67 (2.89)	Relative humidity
41.6 (31.0)	2271	3.30 (12.51)	0.557 (0.339)	12.54 (2.47)	49%
20.9 (15.6)	2285	2.39 (9.05)	0.802 (0.488)	8.73 (1.72)	Barometer
--	2290	1.55 (5.87)	--	--	29.8" Hg (101.0 kPa)

Maximum Torque -270.2 lb.-ft. (366.4 Nm) at 1302 rpm
 Maximum Torque Rise -20.2%
 Torque rise at 1800 engine rpm -13%

DRAWBAR PERFORMANCE (Unballasted-Front Drive Engaged)

FUEL CONSUMPTION CHARACTERISTICS

Power Hp (kW)	Drawbar pull lbs (kN)	Speed mph (km/h)	Crank- shaft speed rpm	Slip %	Fuel Consumption lb/hp.hr (kg/kW.h)	Hp.hr/gal (kW.h/l)	Temp. °F (°C) cool- ing med	Air dry bulb	Barom. inch Hg (kPa)
Maximum Power—6th (2M) Gear									
78.3 (58.4)	7215 (32.1)	4.07 (6.55)	2201	5.8	0.516 (0.314)	13.60 (2.68)	180 (82)	68 (20)	29.9 (101.3)
75% of Pull at Maximum Power—6th (2M) Gear									
60.9 (45.4)	5415 (24.1)	4.22 (6.79)	2243	4.2	0.546 (0.332)	12.79 (2.52)	180 (82)	68 (20)	29.9 (101.3)
50% of Pull at Maximum Power—6th (2M) Gear									
41.4 (30.9)	3615 (16.1)	4.30 (6.92)	2259	3.0	0.635 (0.386)	11.01 (2.17)	180 (82)	70 (21)	29.9 (101.3)
75% of Pull at Reduced Engine Speed—7th (3M) Gear									
61.0 (45.5)	5430 (24.1)	4.21 (6.78)	1711	4.4	0.470 (0.286)	14.87 (2.93)	178 (81)	70 (21)	29.9 (101.3)
50% of Pull at Reduced Engine Speed—7th (3M) Gear									
41.4 (30.9)	3620 (16.1)	4.29 (6.91)	1720	3.1	0.513 (0.312)	13.65 (2.69)	178 (81)	70 (21)	29.9 (101.3)

Location of tests: Silsoe Research Institute, Wrest Park, Silsoe, Bedford, England MK45 4HS

Dates of tests: August to September, 1997

Manufacturer: AGCO Limited, P.O. Box 62, Banner Lane, Coventry, West Midlands, England CV4 9GF

FUEL and OIL: Fuel No. 2 Diesel **Specific gravity converted to 60°/60°F (15°/15°C)** 0.841 **Fuel weight** 7.00 lbs/gal (0.839 kg/l) **Oil SAE** 15W-30 **API service classification** CD **Transmission and hydraulic lubricant** SAE 15W-30 **Front axle lubricant** SAE 15W-30

ENGINE: Make Perkins Diesel **Type** six cylinder vertical **Serial No.** YG31300 **Crankshaft** lengthwise **Rated engine speed** 2200 **Bore and stroke** 3.937" x 5.00" (100.0 mm x 127.0 mm) **Compression ratio** 17.3 to 1 **Displacement** 365 cu in (5985 ml) **Starting system** 12 volt **Lubrication** pressure **Air cleaner** two paper elements and centrifugal precleaner **Oil filter** one full flow cartridge **Oil cooler** engine coolant heat exchanger for crankcase oil, radiator for hydraulic and transmission oil **Fuel filter** one paper element **Muffler** underhood **Exhaust** vertical **Cooling medium temperature control** thermostat

CHASSIS: **Type** front wheel assist **Serial No.** ACAD14AAXAE14999 **Tread width** rear 60.0" (1525 mm) to 88.0" (2235 mm) front 68.9" (1750 mm) to 80.9" (2055 mm) **Wheelbase** 102.7" (2609 mm) **Hydraulic control system** direct engine drive **Transmission** selective gear fixed ratio **Nominal travel speeds mph (km/h)** first 1.14 (1.84) second 1.50 (2.41) third 1.96 (3.16) fourth 2.57 (4.14) fifth 3.23 (5.20) sixth 4.22 (6.79) seventh 5.54 (8.91) eighth 7.25 (11.67) ninth 8.72 (14.03) tenth 11.40 (18.34) eleventh 14.96 (24.07) twelfth 19.59 (31.52) reverse 1.16 (1.87), 1.52 (2.45), 1.99 (3.21), 2.62 (4.21), 3.29 (5.29), 4.29 (6.91), 5.64 (9.07), 7.38 (11.87), 8.87 (14.27), 11.59 (18.65), 15.21 (24.48), 19.92 (32.05) **Clutch** single dry disc operated by foot pedal **Brakes** multiple wet disc hydraulically operated by two foot pedals that can be locked together **Steering** hydrostatic **Power take-off** 540 rpm at 1902 engine rpm or 1000 rpm at 2000 engine rpm **Unladen tractor mass** 9080 lb (4118 kg)

DRAWBAR PERFORMANCE
(Unballasted–Front Drive Engaged)
MAXIMUM POWER IN SELECTED GEARS

Power Hp (kW)	Drawbar pull lbs (kN)	Speed mph (km/h)	Crank- shaft speed rpm	Slip %	Fuel Consumption lb/hp.hr (kg/kW.h)	Fuel Consumption Hp.hr/gal (kW.h/l)	Temp. °F (°C) cool- ing med	Air dry bulb	Barom. inch Hg (kPa)
2nd (2L) Gear									
33.5 (25.0)	9420 (41.9)	1.33 (2.14)	2264	15.5	0.730 (0.444)	9.59 (1.89)	180 (82)	70 (21)	29.9 (101.3)
3rd (3L) Gear									
43.8 (32.7)	9060 (40.3)	1.81 (2.92)	2255	11.9	0.631 (0.384)	11.12 (2.19)	180 (82)	68 (20)	29.9 (101.3)
4th (4L) Gear									
57.7 (43.0)	9060 (40.3)	2.39 (3.84)	2242	11.0	0.580 (0.353)	12.08 (2.38)	180 (82)	70 (21)	29.9 (101.3)
5th (1M) Gear									
71.7 (53.5)	9060 (40.3)	2.97 (4.78)	2224	11.1	0.544 (0.331)	12.89 (2.54)	181 (83)	68 (20)	29.9 (101.3)
6th (2M) Gear									
79.1 (59.0)	7430 (33.1)	3.99 (6.43)	2165	5.9	0.511 (0.311)	13.71 (2.70)	180 (82)	68 (20)	29.9 (101.3)
7th (3M) Gear									
79.8 (59.5)	5615 (25.0)	5.33 (8.57)	2161	4.4	0.508 (0.309)	13.81 (2.72)	180 (82)	64 (18)	29.9 (101.3)
8th (4M) Gear									
77.4 (57.7)	4120 (18.3)	7.04 (11.33)	2160	3.3	0.521 (0.317)	13.40 (2.64)	180 (82)	64 (18)	29.9 (101.3)
9th (1H) Gear									
77.4 (57.7)	3400 (15.1)	8.53 (13.73)	2166	2.8	0.523 (0.318)	13.40 (2.64)	180 (82)	64 (18)	29.9 (101.3)
10th (2H) Gear									
73.5 (54.8)	2468 (11.0)	11.17 (17.98)	2158	2.3	0.549 (0.334)	12.74 (2.51)	180 (82)	64 (18)	29.9 (101.3)

REPAIRS AND ADJUSTMENTS: No repairs or adjustments.

REMARKS: All test results were determined from observed data obtained in accordance with official OECD test procedures. This tractor did not meet the manufacturer's 3 point lift capacity claim of 8818 lbs (4000 kg) at lower link ends. The performance results on this summary were taken from a test conducted under the OECD Code 2 test procedure.

We, the undersigned, certify that this is a true summary of data from OECD Report No. **1731**, Nebraska Summary 322, September 25, 2000.

Brent T. Sampson
 Test Engineer

L.L. Bashford
 M.F. Kocher
 R.D. Grisso, Jr.
 Board of Tractor Test Engineers

TRACTOR SOUND LEVEL WITH CAB	Front Wheel Drive	
	Disengaged dB(A)	Engaged dB(A)
Maximum sound level in 6th (2M) Gear	83.0	83.0
Bystander in 12th (4H) gear	88.0	--

TIRES AND WEIGHT

Rear Tires–No., size, ply & psi (kPa)
Front Tires–No., size, ply & psi (kPa)
Height of Drawbar
Static Weight with operator –Rear
 –Front
 –Total

Tested Without Ballast

Two 18.4R38; **, 12(83)
 Two 420/70R24; **, 15(103)
 22.6 in (575 mm)
 5465 lb (2478 kg)
 3780 lb (1715 kg)
 9245 lb (4193 kg)

DRAWBAR PERFORMANCE
(Unballasted - Front Drive Disengaged)
FUEL CONSUMPTION CHARACTERISTICS

Power Hp (kW)	Drawbar pull lbs (kN)	Speed mph (km/h)	Crank- shaft speed rpm	Slip %	Fuel lb/hp.hr (kg/kW.h)	Consumption Hp.hr/gal (kW.h/l)	Temp. °F (°C) cool- ing med	Air dry bulb	Barom. inch Hg (kPa)
Maximum Power—9th (1H) Gear									
79.4 (59.2)	3505 (15.6)	8.49 (13.67)	2208	3.0	0.510 (0.310)	13.76 (2.71)	180 (82)	66 (19)	29.9 (101.1)
75% of Pull at Maximum Power—9th (1H) Gear									
60.9 (45.4)	2630 (11.7)	8.68 (13.97)	2241	2.3	0.544 (0.331)	12.84 (2.53)	180 (82)	66 (19)	29.9 (101.1)
50% of Pull at Maximum Power—9th (1H) Gear									
41.4 (30.9)	1760 (7.8)	8.83 (14.21)	2262	1.7	0.638 (0.388)	10.96 (2.16)	180 (82)	64 (18)	29.9 (101.1)
75% of Pull at Reduced Engine Speed—10th (2H) Gear									
60.6 (45.2)	2620 (11.7)	8.68 (13.97)	1716	2.5	0.465 (0.283)	15.02 (2.96)	180 (82)	68 (20)	29.9 (101.1)
50% of Pull at Reduced Engine Speed—10th (2H) Gear									
41.4 (30.9)	1760 (7.8)	8.82 (14.20)	1732	1.8	0.513 (0.312)	13.65 (2.69)	178 (81)	70 (21)	29.9 (101.1)
MAXIMUM POWER IN SELECTED GEARS									
3rd (3L) Gear									
31.4 (23.4)	6835 (30.4)	1.72 (2.77)	2273	15.1	0.727 (0.442)	9.64 (1.90)	180 (82)	68 (20)	29.9 (101.1)
4th (4L) Gear									
41.2 (30.7)	6620 (29.4)	2.33 (3.75)	2258	11.8	0.639 (0.389)	10.96 (2.16)	180 (82)	68 (20)	29.9 (101.1)
5th (1M) Gear									
51.0 (38.0)	6520 (29.0)	2.93 (4.72)	2252	11.4	0.579 (0.352)	12.08 (2.38)	180 (82)	70 (21)	29.9 (101.1)
6th (2M) Gear									
67.5 (50.3)	6575 (29.2)	3.85 (6.19)	2233	10.4	0.541 (0.329)	12.94 (2.55)	180 (82)	68 (20)	29.9 (101.1)
7th (3M) Gear									
79.4 (59.2)	5825 (25.9)	5.11 (8.22)	2163	6.3	0.508 (0.309)	13.81 (2.72)	180 (82)	64 (18)	29.9 (101.1)
8th (2M) Gear									
80.2 (59.8)	4380 (19.5)	6.87 (11.05)	2163	3.9	0.505 (0.307)	13.86 (2.73)	180 (82)	66 (19)	29.9 (101.1)
9th (3M) Gear									
81.3 (60.6)	3670 (16.3)	8.30 (13.36)	2161	3.2	0.496 (0.302)	14.11 (2.78)	180 (82)	66 (19)	29.9 (101.1)
10th (4M) Gear									
80.2 (59.8)	2755 (12.3)	10.92 (17.57)	2156	2.4	0.505 (0.307)	13.86 (2.73)	180 (82)	64 (18)	29.9 (101.1)

THREE POINT HITCH PERFORMANCE (OECD Static Test)

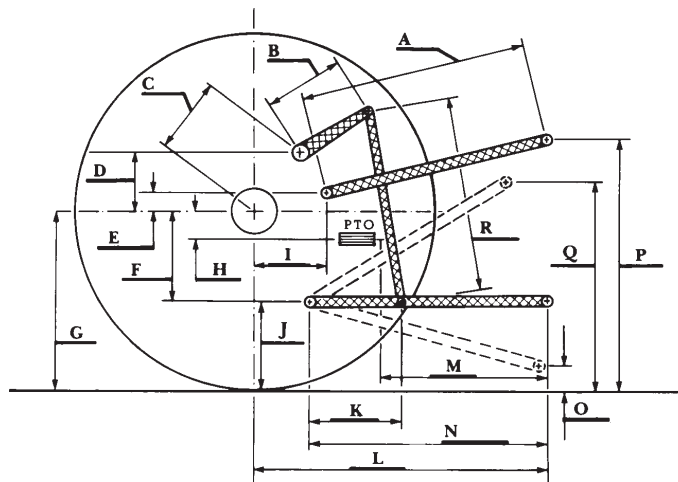
CATEGORY: II

Quick Attach: None

Maximum Force Exerted Through Whole Range: 7240 lbs (32.2 kN)(at the frame)
8185 lbs (36.4 kN)(at the hitch points)

- i) Opening pressure of relief valve: NA
- Sustained pressure of the open relief valve: 3105 psi (214 bar)
- ii) Pump delivery rate at minimum pressure: 10.3 GPM (39.0 l/min)
- iii) Pump delivery rate at maximum
 - hydraulic power: 9.9 GPM (37.5 l/min)
 - Delivery pressure: 2755 psi (190 bar)
 - Power: 15.9 HP (11.9 kW)

HITCH DIMENSIONS AS TESTED—NO LOAD



	inch	mm
A	33.9	860
B	12.2	310
C	12.0	304
D	9.2	233
E	8.1	205
F	8.4	212
G	32.3	820
H	5.4	137
I	7.3	186
J	23.9	608
K	24.2	615
L	42.0	1068
M	28.9	735
N	43.3	1100
O	7.8	197
P	48.0	1218
Q	36.2	920
R	29.8	756