

NEBRASKA OECD TRACTOR TEST 2179A - SUMMARY 1103A

JOHN DEERE 7210R DIESEL

ALSO JOHN DEERE 7R 210 DIESEL

e23 TRANSMISSION

POWER TAKE-OFF PERFORMANCE

Power HP (kW)	Crank shaft speed rpm	Diesel Consumption Gal/hr (l/h)	lb/hp.hr (kg/kW.h)	Hp.hr/gal (kW.h/l)	D.E.F. Consumption Gal/hr (l/h)	Mean Atmospheric Conditions
MAXIMUM POWER AND FUEL CONSUMPTION						
Rated Engine Speed—(PTO speed—1067 rpm)						
182.22 (135.88)	2099	10.37 (39.24)	0.398 (0.242)	17.58 (3.46)	0.23 (0.88)	Fuel used during active exhaust regeneration-0.61 gal (2.32 l) (see note 1, p.2)
Standard Power Take-off Speed (1000 rpm)						
199.07 (148.45)	1967	11.01 (41.68)	0.387 (0.235)	18.08 (3.56)	0.27 (1.03)	
Maximum Power (1 hour)						
205.32 (153.11)	1702	11.02 (41.70)	0.375 (0.228)	18.64 (3.67)	0.27 (1.03)	

VARYING POWER AND FUEL CONSUMPTION

182.22 (135.88)	2099	10.37 (39.24)	0.398 (0.242)	17.58 (3.46)	0.23 (0.88)	Air temperature
159.05 (118.60)	2153	9.42 (35.65)	0.414 (0.252)	16.89 (3.33)	0.19 (0.71)	73°F (23°C)
119.98 (89.47)	2165	7.52 (28.46)	0.438 (0.267)	15.96 (3.14)	0.15 (0.56)	Relative humidity
80.29 (59.88)	2172	6.00 (22.71)	0.523 (0.318)	13.39 (2.64)	0.11 (0.42)	33%
40.56 (30.25)	2182	4.35 (16.48)	0.751 (0.457)	9.32 (1.83)	0.07 (0.27)	Barometer
1.73 (1.29)	2192	2.63 (9.95)	10.605 (6.451)	0.66 (0.13)	0.09 (0.36)	28.94" Hg (97.99 kPa)

Maximum torque - 673 lb.-ft. (912 Nm) at 1501 rpm

Maximum torque rise - 47.6%

Torque rise at 1680 engine rpm - 42%

Power increase at 1702 engine rpm - 12.7%

DRAWBAR PERFORMANCE

UNBALLASTED - FRONT DRIVE ENGAGED

FUEL CONSUMPTION CHARACTERISTICS

Power Hp (kW)	Drawbar pull lbs (kN)	Speed mph (km/h)	Crank- shaft speed rpm	Slip %	Fuel Consumption lb/hp.hr (kg/kW.h)	Hp.hr/gal (kW.h/l)	D.E.F. Consumption lb/hp.hr (kg/kW.h)	Temp. °F(°C) cool- ing med Air dry bulb	Barom. inch Hg (kPa)	
Power at Rated Engine Speed—10th Gear- Manual mode										
170.77 (127.34)	12588 (55.99)	5.09 (8.19)	2099	2.5	0.421 (0.256)	16.60 (3.27)	0.012 (0.007)	215 (102)	62 (16)	28.97 (98.10)
75% of Pull at Rated Engine Speed—10th Gear- Manual mode										
132.60 (98.88)	9438 (41.98)	5.27 (8.48)	2158	1.8	0.450 (0.274)	15.53 (3.06)	0.011 (0.007)	215 (102)	69 (21)	28.92 (97.93)
50% of Pull at Rated Engine Speed—10th Gear- Manual mode										
89.64 (66.84)	6303 (28.04)	5.33 (8.58)	2169	1.1	0.513 (0.312)	13.63 (2.68)	0.013 (0.008)	215 (102)	69 (21)	28.93 (97.97)
75% of Pull at Reduced Engine Speed—5.3 mph (8.6 km/h)- Auto mode										
132.75 (98.99)	9486 (42.19)	5.25 (8.45)	1400	1.8	0.401 (0.244)	17.45 (3.44)	0.013 (0.008)	215 (102)	68 (20)	28.92 (97.93)
50% of Pull at Reduced Engine Speed—5.3 mph (8.6 km/h)- Auto mode										
89.38 (66.65)	6341 (28.21)	5.29 (8.51)	1224	1.1	0.416 (0.253)	16.79 (3.31)	0.019 (0.012)	214 (101)	71 (22)	28.83 (97.63)

Location of tests: Nebraska Tractor Test Laboratory, University of Nebraska, Lincoln, Nebraska 68583-0832

Dates of tests: September 5 - 8, 2017

Manufacturer: John Deere Tractor Works, 3500 East Donald Street, P.O. Box 270, Waterloo Ia, 50704-0270

CONSUMABLE Fluids, OIL and TIME: Fuel No. 2 Diesel **Specific gravity converted to 60°/60°F (15°/15°C)** 0.8400 **Fuel weight** 6.994 lbs/gal (0.838 kg/l) **Diesel Exhaust Fluid (DEF)** 32% aqueous urea solution **DEF weight** 9.071 lbs/gal (1.087 kg/l) **Oil SAE 15W-40 API service classification CJ-4 Transmission and hydraulic lubricant** John Deere Hy-Gard fluid **Front axle lubricant** John Deere Hy-Gard fluid **Total time engine was operated:** 23.5 hours

ENGINE: Make John Deere **Diesel Type** six cylinder vertical with turbocharger, air to air aftercooler and D.E.F. (diesel exhaust fluid) exhaust treatment **Serial No.** *PE6068U051259* **Crankshaft** lengthwise **Rated engine speed** 2100 **Bore and stroke** 4.19" x 5.00" (106.5 mm x 127.0 mm) **Compression ratio** 17.2 to 1 **Displacement** 414 cu in (6788 ml) **Starting system** 12 volt **Lubrication** pressure **Air cleaner** two paper elements and aspirator **Oil filter** one full flow cartridge **Oil cooler** engine coolant heat exchanger for crankcase oil, radiator for hydraulic and transmission oil **Fuel filter** one paper element and prestrainer **Fuel cooler** radiator for pump return fuel **Exhaust** DOC (diesel oxidation catalyst), SCR (selective catalyst reduction) and regenerative DPF (diesel particulate filter) integrated within a vertical muffler **Cooling medium temperature control** 2 thermostats and variable speed fan

ENGINE OPERATING PARAMETERS: Fuel rate: 67.9 - 73.4 lb/h (30.8 - 33.3 kg/h) **High idle:** 2150 - 2250 rpm **Turbo boost:** nominal 25.4 - 28.3 psi (175 - 195 kPa) as measured 26.7 psi (184 kPa)

CHASSIS: Type front wheel assist with duals **Serial No.** *1RW7210REHS093003* **Tread width** rear 60.0" (1524 mm) to 128.9" (3272 mm) front 60.0" (1524 mm) to 88.0" (2235 mm) **Wheelbase** 115.2" (2925 mm) **Hydraulic control system** direct engine drive **Transmission** selective gear fixed ratio with full range operator controlled power shift **Nominal travel speeds mph (km/h)** first 1.50 (2.42) second 1.74 (2.80) third 2.01 (3.23) fourth 2.32 (3.73) fifth 2.67 (4.29) sixth 3.08 (4.96) seventh 3.53 (5.68) eighth 4.08 (6.56) ninth 4.66 (7.50) tenth 5.38 (8.66) eleventh 6.21 (10.00) twelfth 7.15 (11.51) thirteenth 8.26 (13.29) fourteenth 9.45 (15.21) fifteenth 10.92 (17.57) sixteenth 12.68

DRAWBAR PERFORMANCE
UNBALLASTED - FRONT DRIVE ENGAGED
MANUAL MODE - 2100 ENGINE RPM
DRAWBAR POWER IN SELECTED GEARS

Power Hp (kW)	Drawbar pull lbs (kN)	Speed mph (km/h)	Crank- shaft speed rpm	Slip %	Fuel Consumption lb/hp.hr (kg/kW.h)	D.E.F. Consumption lb/hp.hr (kg/kW.h)	Temp. °F(°C) cool- ing med	Air dry bulb	Barom. inch Hg (kPa)	
5th Gear										
131.97 (98.41)	21510 (95.68)	2.31 (3.71)	2154	13.6	0.494 (0.300)	14.17 (2.79)	0.013 (0.008)	215 (102)	68 (20)	28.87 (97.77)
6th Gear										
148.61 (110.81)	21022 (93.51)	2.65 (4.26)	2124	13.1	0.475 (0.289)	14.71 (2.90)	0.013 (0.008)	216 (102)	53 (12)	28.89 (97.83)
7th Gear										
165.51 (123.42)	19353 (86.08)	3.21 (5.17)	2099	6.4	0.438 (0.266)	15.97 (3.15)	0.011 (0.007)	216 (102)	56 (13)	28.89 (97.83)
8th Gear										
168.99 (126.01)	16683 (74.21)	3.80 (6.12)	2100	4.0	0.429 (0.261)	16.30 (3.21)	0.011 (0.007)	215 (102)	62 (17)	28.89 (97.83)
9th Gear										
169.27 (126.22)	14481 (64.41)	4.38 (7.05)	2100	3.2	0.425 (0.259)	16.46 (3.24)	0.011 (0.007)	216 (102)	59 (15)	28.97 (98.10)
10th Gear										
170.77 (127.34)	12588 (55.99)	5.09 (8.19)	2099	2.5	0.421 (0.256)	16.60 (3.27)	0.012 (0.007)	215 (102)	62 (16)	28.97 (98.10)
11th Gear										
168.52 (125.66)	10705 (47.62)	5.90 (9.50)	2100	2.1	0.427 (0.259)	16.40 (3.23)	0.011 (0.007)	216 (102)	64 (18)	28.97 (98.10)
12th Gear										
169.86 (126.66)	9352 (41.60)	6.81 (10.96)	2100	1.8	0.422 (0.257)	16.56 (3.26)	0.012 (0.007)	216 (102)	64 (18)	28.97 (98.10)
13th Gear										
168.02 (125.29)	7981 (35.50)	7.90 (12.71)	2100	1.6	0.427 (0.260)	16.39 (3.23)	0.011 (0.007)	217 (103)	66 (19)	28.96 (98.07)
14th Gear										
166.37 (124.06)	6889 (30.64)	9.06 (14.57)	2100	1.3	0.430 (0.262)	16.26 (3.20)	0.011 (0.007)	217 (103)	67 (20)	28.96 (98.07)

TRACTOR SOUND LEVEL WITH CAB

	Front Wheel Drive Engaged dB(A)	Disengaged dB(A)
At no load in 9th gear	66.9	66.8
Transport speed - no load - 21st gear		69.2
Bystander in 21st gear		83.4

Horizontal distance of drawbar hitch point behind rear wheel axis - 47.4"(1203 mm)

TIRES AND WEIGHT

Rear Tires - No., size, ply & psi(kPa)
Front Tires - No., size, ply & psi(kPa)
Height of Drawbar
Static Weight with operator - Rear
- Front
- Total

Tested Without Ballast

Four 480/80R46;***;12(85)
Two 420/90R30;***;14(95)
19.5 in (495 mm)
14790 lb (6709 kg)
7675 lb (3481 kg)
22465 lb(10190 kg)

(20.41) seventeenth 14.65 (23.57) eighteenth 16.91 (27.22) nineteenth 19.54 (31.44) twentieth 22.47 (36.17) twenty-first 25.96 (41.78) twenty-second 26.10 (42.00) twenty-third 26.10 (42.00) electronically limited reverse 1.41 (2.27), 1.88 (3.02), 2.50 (4.02), 3.30 (5.31), 3.77 (6.07), 5.03 (8.10), 6.69 (10.76), 8.84 (14.22), 11.86 (19.08), 15.81 (25.45), 18.64 (30.00) electronically limited **Clutch** wet multiple disc hydraulically actuated by foot pedal **Brakes** wet multiple disc hydraulically operated by two foot pedals that can be locked together **Steering** hydrostatic **Power take-off** 540 rpm at 1763 engine rpm or 1000 rpm at 1967 or 1756 engine rpm **Unladen tractor mass** 22290 lb (10111 kg)

REPAIRS AND ADJUSTMENTS: No repairs or adjustments.

NOTE 1: The manufacturer declares that the average time between active regenerations is 40 hours. A 1% power increase was observed during the active regeneration.

REMARKS: All test results were determined from observed data obtained in accordance with official OECD, SAE and Nebraska test procedures. This tractor fell 1.2% short of meeting the manufacturer's remote hydraulic flow claim of 59 GPM (223.3 l/min) with the 85 cc pump. The performance figures on this summary were taken from a test conducted under the OECD Code 2 test procedure.

REPORT REISSUED. Supplemental sales permit for John Deere 7R 210 Diesel, January 2021.

We, the undersigned, certify that this is a true and correct report of official Tractor Test No. **2179A**, Nebraska Summary 1103A, January 14, 2021.

Roger M. Hoy
Director

M.F. Kocher
P.J. Jasa
J.D. Luck
Board of Tractor Test Engineers

DRAWBAR PERFORMANCE
UNBALLASTED - FRONT DRIVE ENGAGED - AUTO MODE
(Loads based on 2100 engine rpm manual mode performance runs)
DRAWBAR POWER AT SELECTED TRAVEL SPEEDS

Power Hp (kW)	Drawbar pull lbs (kN)	Speed mph (km/h)	Crank- shaft speed rpm	Slip %	Fuel Consumption		D.E.F. Consumption	Temp. °F(°C) cool- ing med	Air dry bulb	Barom. inch Hg (kPa)
					lb/hp.hr (kg/kW.h)	Hp.hr/gal (kW.h/l)	lb/hp.hr (kg/kW.h)			
3.5 mph (5.6 km/h)										
165.62 (123.50)	18877 (83.97)	3.29 (5.29)	1616	5.5	0.408 (0.248)	17.12 (3.37)	0.014 (0.008)	214 (101)	58 (14)	28.89 (97.83)
4.0 mph (6.4 km/h)										
169.00 (126.02)	16585 (73.77)	3.82 (6.15)	1599	4.0	0.400 (0.243)	17.49 (3.44)	0.015 (0.009)	214 (101)	66 (19)	28.89 (97.83)
4.3 mph (7.0 km/h)										
168.61 (125.73)	14840 (66.01)	4.26 (6.86)	1532	3.3	0.401 (0.244)	17.44 (3.44)	0.012 (0.007)	214 (101)	61 (16)	28.97 (98.10)
5.2 mph (8.4 km/h)										
170.22 (126.93)	12545 (55.80)	5.09 (8.19)	1580	2.5	0.396 (0.241)	17.66 (3.48)	0.012 (0.007)	214 (101)	63 (17)	28.97 (98.10)
6.0 mph (9.6 km/h)										
168.72 (125.81)	10837 (48.20)	5.84 (9.40)	1563	2.1	0.397 (0.241)	17.63 (3.47)	0.013 (0.008)	215 (102)	65 (18)	28.97 (98.10)
6.9 mph (11.2 km/h)										
169.44 (126.35)	9293 (41.34)	6.84 (11.01)	1594	1.8	0.395 (0.240)	17.70 (3.49)	0.014 (0.008)	215 (102)	67 (19)	28.97 (98.10)
8.1 mph (13.0 km/h)										
167.60 (124.98)	7896 (35.12)	7.96 (12.81)	1601	1.5	0.398 (0.242)	17.57 (3.46)	0.014 (0.009)	216 (102)	66 (19)	28.96 (98.07)
9.2 mph (14.8 km/h)										
166.67 (124.28)	6878 (30.59)	9.09 (14.63)	1570	1.1	0.399 (0.243)	17.52 (3.45)	0.011 (0.007)	217 (103)	67 (20)	28.94 (98.00)

DRAWBAR PERFORMANCE
UNBALLASTED - FRONT DRIVE ENGAGED - 1700 ENGINE RPM
MAXIMUM POWER IN SELECTED GEARS

Power Hp (kW)	Drawbar pull lbs (kN)	Speed mph (km/h)	Crank- shaft speed rpm	Slip %	Fuel Consumption lb/hp.hr (kg/kW.h)	Hp.hr/gal (kW.h/l)	D.E.F. Consumption lb/hp.hr (kg/kW.h)	Temp. °F(°C) cool- ing med	Air dry bulb	Barom. inch Hg (kPa)
5th Gear										
131.22 (97.85)	21607 (96.11)	2.28 (3.67)	2154	14.5	0.497 (0.302)	14.08 (2.77)	0.013 (0.008)	215 (102)	69 (20)	28.87 (97.77)
6th Gear										
148.91 (111.04)	21015 (93.48)	2.66 (4.27)	2126	13.0	0.475 (0.289)	14.72 (2.90)	0.012 (0.007)	216 (102)	53 (12)	28.89 (97.83)
7th Gear										
167.69 (125.04)	19944 (88.72)	3.16 (5.08)	2078	7.1	0.437 (0.266)	16.00 (3.15)	0.012 (0.007)	215 (102)	60 (15)	28.89 (97.83)
8th Gear										
178.52 (133.12)	18979 (84.42)	3.53 (5.68)	2005	6.3	0.425 (0.259)	16.46 (3.24)	0.012 (0.007)	216 (102)	66 (19)	28.87 (97.77)
9th Gear										
185.89 (138.62)	17915 (79.69)	3.89 (6.26)	1902	5.2	0.419 (0.255)	16.71 (3.29)	0.013 (0.008)	216 (102)	72 (22)	28.87 (97.77)
10th Gear										
190.06 (141.73)	16471 (73.26)	4.33 (6.97)	1816	4.2	0.407 (0.248)	17.18 (3.38)	0.012 (0.007)	216 (102)	73 (23)	28.87 (97.77)
11th Gear										
191.25 (142.62)	15212 (67.66)	4.72 (7.59)	1700	3.4	0.404 (0.246)	17.32 (3.41)	0.012 (0.007)	215 (102)	64 (18)	28.97 (98.10)
12th Gear										
192.34 (143.42)	13204 (58.73)	5.46 (8.79)	1700	2.7	0.400 (0.243)	17.48 (3.44)	0.012 (0.007)	216 (102)	67 (19)	28.97 (98.10)
13th Gear										
191.53 (142.82)	11323 (50.37)	6.34 (10.20)	1700	2.3	0.400 (0.244)	17.47 (3.44)	0.012 (0.007)	217 (103)	66 (19)	28.96 (98.07)
14th Gear										
193.31 (144.15)	9953 (44.27)	7.28 (11.72)	1700	1.9	0.400 (0.243)	17.50 (3.45)	0.013 (0.008)	217 (103)	68 (20)	28.94 (98.00)
15th Gear										
191.71 (142.96)	8515 (37.88)	8.44 (13.58)	1700	1.7	0.403 (0.245)	17.37 (3.42)	0.012 (0.007)	217 (103)	68 (20)	28.94 (98.00)

Shiftable PTO Performance

Economy mode

1003 PTO rpm @ 1763 engine rpm

Power HP (kW)	Crank shaft speed rpm	Diesel Consumption Gal/hr (l/h)	lb/hp.hr (kg/kW.h)	Hp.hr/gal (kW.h/l)	D.E.F. Consumption Gal/hr (l/h)
200.10 (149.21)	1764	10.51 (39.80)	0.367 (0.224)	19.03 (3.75)	0.30 (1.15)
150.25 (112.04)	1764	8.09 (30.62)	0.377 (0.229)	18.57 (3.66)	0.25 (0.94)
99.94 (74.52)	1763	5.77 (21.85)	0.404 (0.246)	17.31 (3.41)	0.16 (0.61)
50.15 (37.40)	1764	3.74 (14.16)	0.522 (0.317)	13.40 (2.64)	0.09 (0.33)
1.39 (1.04)	1762	1.86 (7.04)	9.319 (5.669)	0.75 (0.15)	0.07 (0.27)

Normal mode

1000 PTO rpm @ 1967 engine rpm

Power HP (kW)	Crank shaft speed rpm	Diesel Consumption Gal/hr (l/h)	lb/hp.hr (kg/kW.h)	Hp.hr/gal (kW.h/l)	D.E.F. Consumption Gal/hr (l/h)
199.38 (148.68)	1967	11.01 (41.66)	0.386 (0.235)	18.12 (3.57)	0.28 (1.05)
150.13 (111.95)	1975	8.56 (32.40)	0.399 (0.243)	17.54 (3.46)	0.20 (0.74)
100.00 (74.57)	1972	6.29 (23.80)	0.440 (0.267)	15.91 (3.13)	0.13 (0.48)
50.07 (37.34)	1968	4.19 (15.86)	0.585 (0.356)	11.95 (2.35)	0.08 (0.30)
1.35 (1.00)	1970	2.33 (8.80)	12.070 (7.342)	0.58 (0.11)	0.11 (0.41)

HYDRAULIC PERFORMANCE

CATEGORY: III

Quick Attach: Yes

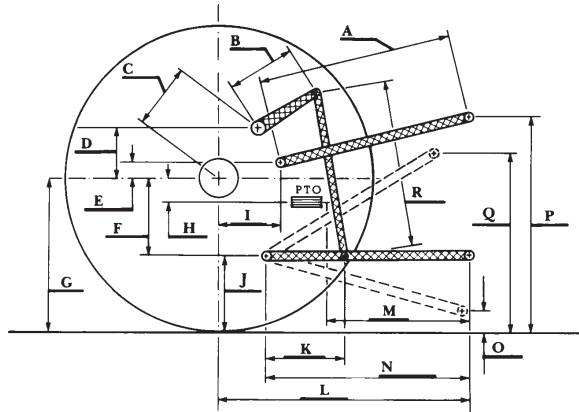
OECD Static test

	<u>lift cylinders</u>	
Maximum force exerted through whole range:	15862 lbs (70.6 kN) (2x100 mm)	18302 lbs (81.4 kN) (1x100 mm & 1x115 mm)
	<u>63 cc pump 85 cc pump</u>	
i) Sustained pressure at compensator cutoff:	2922 psi (201 bar)	2931 psi (202 bar)
	<u>three outlet sets combined</u>	
ii) Pump delivery rate at minimum pressure and rated engine speed:	44.3 GPM (167.7 l/min)	58.3 GPM (220.7 l/min)
iii) Pump delivery rate at maximum hydraulic power:	42.8 GPM (162.2 l/min)	57.5 GPM (217.6 l/min)
Delivery pressure:	2762 psi (190 bar)	2571 psi (177 bar)
Power:	69.0 HP (51.5 kW)	86.2 HP (64.3 kW)
	<u>single outlet set</u>	
ii) Pump delivery rate at minimum pressure and rated engine speed:	36.0 GPM (136.1 l/min)	36.4 GPM (137.9 l/min)
iii) Pump delivery rate at maximum hydraulic power:	34.3 GPM (129.8 l/min)	35.4 GPM (134.0 l/min)
Delivery pressure:	2380 psi (158 bar)	2244 psi (155 bar)
Power:	47.6 HP (35.5 kW)	46.4 HP (34.6 kW)

HITCH DIMENSIONS AS TESTED—NO LOAD

	inch	mm
A	28.0	710
B	20.5	520
C	22.9	581
D	18.9	480
E	7.3	185
F	14.4	365
G	38.8	985
H	3.5	90
I	22.4	570
J	24.4	620
K	29.3	745
L	52.0	1321
*L'	56.0	1423
M	28.0	712
N	43.4	1102
O	9.0	230
P	51.9	1319
Q	39.4	1001
R	44.9	1140

*L' to Quick Attach ends



RECOMMENDED CITATION FORMAT:

NTTL.(2021). Nebraska OECD tractor test 2179A for John Deere 7R 210 e23 Diesel. Lincoln, NE:Nebraska Tractor Test Laboratory. Retrieved from <http://tractortestlab.unl.edu>



JOHN DEERE 7R 210 DIESEL
 Institute of Agriculture and Natural Resources
 University of Nebraska–Lincoln