

SUMMARY OF OECD TEST 2973-NEBRASKA SUMMARY 1095

CASE IH MAXXUM 135 DIESEL

16 SPEED

POWER TAKE-OFF PERFORMANCE

Power HP (kW)	Crank shaft speed rpm	Diesel Consumption		D.E.F. Consumption		Mean Atmospheric Conditions
		Gal/hr (l/h)	lb/hp.hr (kg/kW.h)	Hp.hr/gal (kW.h/l)	Gal/hr (l/h)	
MAXIMUM POWER AND FUEL CONSUMPTION						
Rated Engine Speed—(PTO speed—1091 rpm)						
117.7 (87.8)	2100	6.86 (25.98)	0.406 (0.247)	17.15 (3.38)	0.39 (1.48)	
Standard Power Take-off Speed (1000 rpm)						
128.3 (95.7)	1924	6.98 (26.44)	0.379 (0.231)	18.88 (3.62)	0.43 (1.63)	
Maximum Power (1 hour)						
131.0 (97.7)	1800	6.94 (26.26)	0.369 (0.225)	18.88 (3.72)	0.41 (1.54)	

VARYING POWER AND FUEL CONSUMPTION

117.7 (87.8)	2100	6.86 (25.98)	0.406 (0.247)	17.15 (3.38)	0.39 (1.48)	Air temperature
102.3 (76.3)	2149	6.21 (23.50)	0.422 (0.257)	16.50 (3.25)	0.37 (1.40)	70°F (21°C)
77.5 (57.8)	2172	5.15 (19.49)	0.462 (0.281)	15.08 (2.97)	0.30 (1.12)	Relative humidity
52.3 (39.0)	2191	4.06 (15.37)	0.540 (0.329)	12.89 (2.54)	0.19 (0.72)	65%
26.4 (19.7)	2209	2.99 (11.32)	0.789 (0.480)	8.83 (1.74)	0.12 (0.47)	Barometer
---	2230	2.07 (7.82)	---	---	0.05 (0.17)	29.2" Hg (98.8 kPa)

Maximum torque - 410 lb.-ft. (556 Nm) at 1600 rpm
 Maximum torque rise - 39.4%
 Torque rise at 1700 engine rpm - 34%
 Power increase at 1800 engine rpm - 11%

DRAWBAR PERFORMANCE (Unballasted - Front Drive Engaged) FUEL CONSUMPTION CHARACTERISTICS

Power Hp (kW)	Drawbar pull lbs (kN)	Speed mph (km/h)	Crank- shaft speed rpm	Slip %	Fuel Consumption lb/hp.hr (kg/kW.h)	Temp. °F (°C) cool- ing med	Air dry bulb	Barom. inch Hg (kPa)
Power at Rated Engine Speed—9th (L8) Gear								
86.8 (64.7)	5420 (24.1)	6.00 (9.66)	2099	2.5	0.552 (0.336)	11.39 (2.49)	183 (83)	70 (21)
75% of Pull at Rated Engine Speed—9th (L8) Gear								
67.3 (50.2)	4070 (18.1)	6.20 (9.99)	2163	2.0	0.612 (0.372)	11.67 (2.24)	178 (84)	70 (21)
50% of Pull at Rated Engine Speed—9th (L8) Gear								
45.7 (34.0)	2715 (12.1)	6.31 (10.16)	2187	1.5	0.657 (0.400)	10.61 (2.09)	180 (82)	72 (22)
75% of Pull at Reduced Engine Speed—10th (H2) Gear								
67.2 (50.1)	4060 (18.1)	6.21 (9.99)	1939	1.9	0.597 (0.363)	11.67 (2.30)	178 (81)	72 (22)
50% of Pull at Reduced Engine Speed—10th (H2) Gear								
45.6 (34.0)	2705 (12.0)	6.32 (10.17)	1964	1.4	0.648 (0.394)	10.76 (2.12)	174 (79)	72 (22)

Location of tests: Istituto per le Macchine Agricole e Movimento Terra 73, Strada delle Cacce 10135 Torino Italy

Dates of tests: April to May, 2016.

Manufacturer: CNH Europe Holding S.A. 24, Boulevard Royal L-2449 Luxembourg

CONSUMABLE FLUIDS: Fuel No. 2 Diesel Specific gravity converted to 60°/60°F (15°/15°C) 0.837 Fuel weight 6.97 lbs/gal (0.835 kg/l) Diesel Exhaust Fluid (DEF) 32% aqueous urea solution DEF weight 9.08 lbs/gal (1.091 kg/l) Oil SAE 10W30 API service classification CJ-4 Transmission and hydraulic lubricant Akcela Nexplore fluid Front axle lubricant Akcela Nexplore fluid

ENGINE: Make FPT Diesel Type four cylinder vertical with turbocharger, air to air intercooler and SCR (selective catalyst reduction) exhaust treatment Serial No. 1390064 Crankshaft lengthwise Rated engine speed 2100 Bore and stroke 4.094" x 5.197" (104.0 mm x 132.0 mm) Compression ratio 17.0 to 1 Displacement 274 cu in (4485 ml) Starting system 12 volt Lubrication pressure Air cleaner two paper elements and aspirator Oil filter one full flow cartridge Oil cooler engine coolant heat exchanger for crankcase oil, radiator for hydraulic and transmission oil Fuel filter one paper element Muffler underhood Exhaust vertical Cooling medium temperature control thermostat and variable speed fan

CHASSIS: Type front wheel assist Serial No. ZFEE01344 Tread width rear 56.3" (1430 mm) to 84.0" (2134 mm) front 61.4" (1560 mm) to 88.8" (2256 mm) Wheelbase 106.1" (2694 mm) Hydraulic control system direct engine drive Transmission selective gear fixed ratio with partial (8) range operator controlled powershift Nominal travel speeds mph (km/h) first 1.44 (2.31) second 1.76 (2.83) third 2.14 (3.45) fourth 2.63 (4.23) fifth 3.37 (5.42) sixth 4.13 (6.65) seventh 5.03 (8.10) eighth 5.60 (9.02) ninth 6.18 (9.94) tenth 6.88 (11.07) eleventh 8.37 (13.47) twelfth 10.27 (16.53) thirteenth 13.17 (21.19) fourteenth 16.14 (25.98) fifteenth 19.68 (31.68) sixteenth 25.27 (40.67) reverse 1.43 (2.28), 1.74 (2.80), 2.12 (3.41), 2.60 (4.18), 3.33 (5.36), 4.08 (6.57), 4.97 (8.00), 5.54 (8.92), 6.20 (9.97), 6.80 (10.94), 8.28 (13.32), 10.16 (16.34), 13.01 (20.94), 15.98 (25.71), 19.44 (31.28), 24.97 (40.19)

DRAWBAR PERFORMANCE
(Unballasted - Front Drive Engaged)
MAXIMUM POWER IN SELECTED GEARS

Power Hp (kW)	Drawbar pull lbs (kN)	Speed mph (km/h)	Crank- shaft speed rpm	Slip %	Fuel Consumption lb/hp.hr (kg/kW.h)	Consumption Hp.hr/gal (kW.h/l)	Temp. ^o F(°C) cool- ing med	Air dry bulb	Barom. inch Hg (kPa)
*6th(L6) Gear									
103.1 (76.9)	11130 (49.5)	3.47 (5.59)	2016	13.8	0.541 (0.329)	12.89 (2.54)	180 (82)	68 (20)	29.3 (99.2)
*7th(L7) Gear									
109.6 (81.7)	10250 (45.6)	4.01 (6.45)	1808	7.6	0.506 (0.308)	13.76 (2.71)	181 (83)	68 (20)	29.3 (99.2)
*8th(H1) Gear									
113.3 (84.5)	9350 (41.6)	4.54 (7.31)	1798	5.2	0.490 (0.298)	14.21 (2.80)	181 (83)	68 (20)	29.3 (99.2)
*9th(L8) Gear									
113.0 (84.3)	8340 (37.1)	5.08 (8.18)	1808	4.1	0.492 (0.299)	14.16 (2.79)	181 (83)	68 (20)	29.3 (99.2)
*10th(H2) Gear									
113.6 (84.7)	7510 (33.4)	5.67 (9.13)	1802	3.6	0.488 (0.297)	14.26 (2.81)	181 (83)	68 (20)	29.3 (99.2)
*11th(H3) Gear									
110.4 (82.3)	5935 (26.4)	6.97 (11.22)	1802	2.7	0.503 (0.306)	13.86 (2.73)	185 (85)	68 (20)	29.3 (99.2)
*12th(H4) Gear									
110.2 (82.2)	4835 (21.5)	8.55 (13.76)	1794	2.2	0.505 (0.307)	13.81 (2.72)	185 (85)	68 (20)	29.3 (99.2)

*Engine power management system activated

Clutch wet disc hydraulically actuated by foot pedal
Brakes wet disc hydraulically actuated by two foot pedals that can be locked together
Steering hydrostatic
Power take-off 540 rpm at 1969 engine rpm or 1000 rpm at 1924 engine rpm
Unladen tractor mass 13715 lb (6220 kg)

REPAIRS AND ADJUSTMENTS: No repairs or adjustments.

NOTE: Engine Power Management (EPM) system is activated at various combinations of drawbar and hydraulic loadings.

REMARKS: All test results were determined from observed data obtained in accordance with official OECD test procedures. This tractor fell 2.4% short of the manufacturer's remote hydraulic flow claim of 21.1 GPM (80 l/min) with FD (fixed disp) pump and 12.7% short of the 29.8 GPM (113 l/min) flow claim with the CCLS hydraulic system. The performance figures on this summary were taken from a test conducted under the OECD Code 2 test procedure.

We, the undersigned, certify that this is a true summary of data from OECD Report No. **2973**, Nebraska Summary 1095, June 12, 2017.

Roger M. Hoy
 Director

M.F. Kocher
 P.J. Jasa
 J.D. Luck
 Board of Tractor Test Engineers

TRACTOR SOUND LEVEL WITH CAB	Front Wheel Drive	
	Engaged dB(A)	Disengaged dB(A)
At no load in 7th(L7) gear	70.0	69.9
Bystander in 15th(H7) gear	--	83.7

TIRES AND WEIGHT

Rear tires - No., size, ply & psi (kPa)
Front tires - No., size, ply & psi (kPa)
Height of Drawbar
Static Weight with operator- Rear
 - Front
 - Total

Tested Without Ballast

Two 650/65R38; **;9 (60)
 Two 540/65R28; **;9 (60)
 20.5 in (520 mm)
 8160 lb (3700 kg)
 5720 lb (2595 kg)
 13880 lb (6295 kg)

HYDRAULIC PERFORMANCE

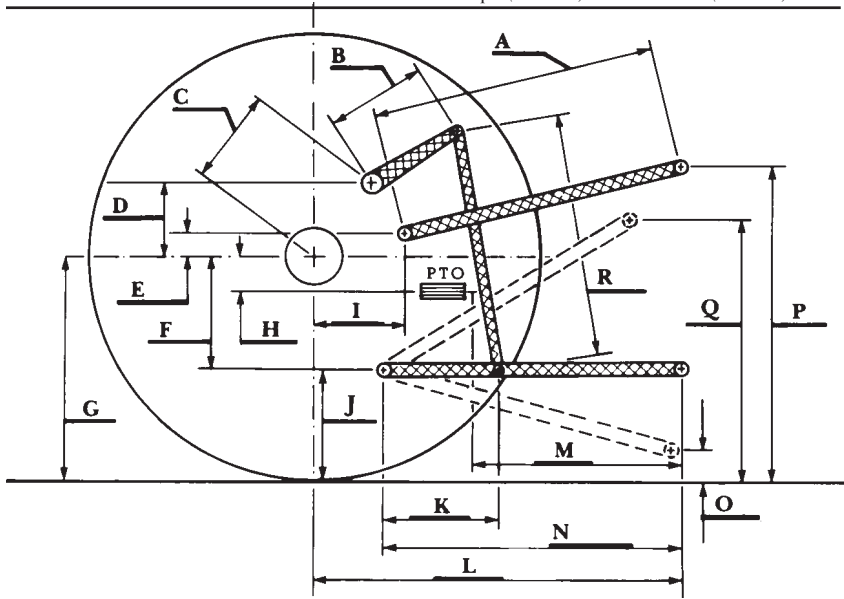
CATEGORY: III

Quick Attach: None

OECD Static test

Maximum force exerted through whole range: 6990 lbs (31.1 kN) Lift cylinders 2x80 mm
8945 lbs (39.8 kN) Lift cylinders 2x90 mm

- i) Sustained pressure of the open relief valve: 3100 psi (214 bar)
FD - Fixed disp pump CCLS Hyd system
two outlet sets combined
- ii) Pump delivery rate at minimum pressure: 20.6 GPM (78.0 l/min) 26.0 GPM (98.6 l/min)
- iii) Pump delivery rate at maximum hydraulic power: 16.2 GPM (61.2 l/min) 24.1 GPM (91.4 l/min)
Delivery pressure: 2685 psi (185 bar) 2770 psi (191 bar)
Power: 25.4 HP (18.9 kW) 39.0 HP (29.1 kW)
single outlet set
- ii) Pump delivery rate at minimum pressure: 20.2 GPM (76.5 l/min) 25.6 GPM (96.9 l/min)
- iii) Pump delivery rate at maximum hydraulic power: 15.5 GPM (58.6 l/min) 23.8 GPM (90.2 l/min)
Delivery pressure: 2685 psi (185 bar) 2755 psi (190 bar)
Power: 24.3 HP (18.1 kW) 38.3 HP (28.6 kW)



HITCH DIMENSIONS AS TESTED—NO LOAD

	inch	mm
A	27.0	685
B	12.2	310
C	15.6	395
D	14.6	370
E	7.9	200
F	9.2	235
G	34.4	875
H	3.0	75
I	16.9	430
J	25.2	640
K	19.9	505
L	45.0	1142
M	23.1	587
N	38.3	974
O	7.9	200
P	52.2	1325
Q	34.3	870
R	33.3	845