

NEBRASKA OECD TRACTOR TEST 2126–SUMMARY 982

CASE IH MAGNUM 380 DIESEL CVT TRANSMISSION

POWER TAKE-OFF PERFORMANCE

Power HP (kW)	Crank shaft speed rpm	Diesel Consumption		D.E.F. Consumption		Mean Atmospheric Conditions
		Gal/hr (l/h)	lb/hp.hr (kg/kWh)	Hp.hr/gal (kW.h/l)	Gal/hr (l/h)	
MAXIMUM POWER AND FUEL CONSUMPTION						
Rated Engine Speed—(PTO speed—1124 rpm)						
320.21 (238.78)	2000	17.13 (64.84)	0.375 (0.228)	18.69 (3.68)	1.76 (6.67)	
Maximum Power (1 hour)						
372.40 (277.70)	1800	19.54 (73.95)	0.368 (0.224)	19.06 (3.76)	1.73 (6.56)	
Standard Power Take-off Speed (1000 rpm)						
371.45 (276.99)	1779	19.48 (73.74)	0.367 (0.224)	19.07 (3.76)	1.73 (6.54)	

VARYING POWER AND FUEL CONSUMPTION

320.21 (238.78)	2000	17.13 (64.84)	0.375 (0.228)	18.69 (3.68)	1.76 (6.67)	Air temperature
288.01 (214.77)	2115	16.06 (60.78)	0.391 (0.238)	17.94 (3.53)	1.34 (5.05)	73°F (23°C)
218.85 (163.20)	2144	12.86 (48.67)	0.412 (0.250)	17.02 (3.35)	0.97 (3.66)	Relative humidity
148.68 (110.87)	2182	9.75 (36.93)	0.460 (0.280)	15.24 (3.00)	0.66 (2.50)	27%
75.14 (56.03)	2202	6.58 (24.91)	0.614 (0.373)	11.42 (2.25)	0.43 (1.65)	Barometer
1.92 (1.44)	2218	3.62 (13.71)	13.187 (8.021)	0.53 (0.10)	0.34 (1.27)	29.07" Hg (98.44 kPa)

Maximum torque - 1249 lb.-ft. (1693 Nm) at 1350 rpm
 Maximum torque rise - 48.5%
 Torque rise at 1600 engine rpm - 41%
 Power increase at 1800 engine rpm - 16.3%

DRAWBAR PERFORMANCE

UNBALLASTED - FRONT DRIVE ENGAGED FUEL CONSUMPTION CHARACTERISTICS

Power Hp (kW)	Drawbar pull lbs (kN)	Speed mph (km/h)	Crank- shaft speed rpm	Slip %	Fuel Consumption lb/hp.hr (kg/kWh)	D.E.F. Consumption Hp.hr/gal (kW.h/l)	Temp. °F(°C) cool- ing dry med	Air bulb	Barom. inch Hg (kPa)	
Maximum Power—5.6 mph (9.0 km/h)-Manual mode										
274.79 (204.91)	19302 (85.86)	5.34 (8.59)	2000	4.3	0.439 (0.267)	15.95 (3.14)	0.054 (0.033)	207 (97)	56 (13)	28.95 (98.04)
75% of Pull at Maximum Power—5.6 mph (9.0 km/h)-Manual mode										
208.71 (155.63)	14487 (64.44)	5.40 (8.69)	2135	3.2	0.468 (0.285)	14.97 (2.95)	0.045 (0.027)	196 (91)	63 (17)	28.97 (98.10)
50% of Pull at Maximum Power—5.6 mph (9.0 km/h)-Manual mode										
140.48 (104.75)	9643 (42.89)	5.46 (8.79)	2176	2.1	0.525 (0.319)	13.35 (2.63)	0.044 (0.027)	185 (85)	64 (18)	28.96 (98.07)
75% of Pull at Reduced Engine Speed—Auto mode										
208.53 (155.50)	14497 (64.48)	5.40 (8.68)	1475	3.2	0.431 (0.262)	16.25 (3.20)	0.043 (0.026)	189 (87)	64 (18)	28.96 (98.07)
50% of Pull at Reduced Engine Speed—Auto mode										
139.91 (104.33)	9627 (42.82)	5.45 (8.77)	1390	2.0	0.448 (0.273)	15.64 (3.08)	0.044 (0.027)	175 (79)	64 (18)	28.97 (98.10)

Location of tests: Nebraska Tractor Test Laboratory, University of Nebraska, Lincoln, Nebraska 68583-0832

Dates of tests: May 19 to June 12, 2015

Manufacturer: CNH Industrial America LLC, 700 State St. Racine, Wi. 53404 USA

CONSUMABLE Fluids, OIL and TIME: Fuel No. 2 Diesel **Specific gravity converted to 60°/60°F (15°/15°C)** 0.8415 **Fuel weight** 7.007 lbs/gal (0.840 kg/l) **Diesel Exhaust Fluid (DEF)** 32% aqueous urea solution **DEF weight** 9.071 lbs/gal (1.087 kg/l) **Oil SAE 10W40 API service classification CJ-4 Transmission and hydraulic lubricant** Case IH Akcela Hy-Tran Ultratractor fluid **Front axle lubricant** SAE 85W-140 API GL-5 **Total time engine was operated:** 32.0 hours

ENGINE: Make F.P.T. Diesel **Type** six cylinder vertical with turbocharger, air to air intercooler and D.E.F. (diesel exhaust fluid) exhaust treatment. **Serial No.** *14IH00075816* **Crankshaft** lengthwise **Rated engine speed** 2000 **Bore and stroke** 4.606" x 5.315" (117.0 mm x 135.0 mm) **Compression ratio** 15.9 to 1 **Displacement** 531 cu in (8704 ml) **Starting system** 12 volt **Lubrication** pressure **Air cleaner** two paper elements and aspirator **Oil filter** one full flow cartridge **Oil cooler** engine coolant heat exchanger for crankcase oil, radiator for hydraulic and transmission oil **Fuel filter** two paper elements **Fuel cooler** radiator for pump return fuel **Exhaust** DOC (diesel oxidation catalyst) and SCR (selective catalyst reduction) integrated within a vertical muffler **Cooling medium temperature control** 2 thermostats and variable speed fan

ENGINE OPERATING PARAMETERS: Fuel rate: 118.6 - 125.9 lb/h (53.8 - 57.1 kg/h) **High idle:** 2200 - 2250 rpm **Turbo boost:** nominal 26.1 - 29.0 psi (180 - 200 kPa) as measured 27.2 psi (188 kPa)

CHASSIS: Type front wheel assist with duals **Serial No.** *ZERF10067* **Tread width** rear 64.0" (1626 mm) to 129.0" (3277 mm) front 60.0" (1524 mm) to 88.0" (2235 mm) **Wheelbase** 124.2" (3155 mm) **Hydraulic control system** direct engine drive **Transmission** Infinitely variable with four mechanical ranges and automatic shifting between ranges. **Nominal travel speeds mph (km/h)** forward - 0 - 31.1 mph, (0 - 50 km/h) reverse - 0 - 15.5 mph, (0-25 km/h) **Clutch** a foot pedal controls the hydrostatic oil flow **Brakes** wet disc hydraulically operated by two foot pedals that can be locked together **Steering** hydrostatic **Power take-off** 1000 rpm at 1778 engine rpm **Unladen tractor mass** 31390 lb (14238 kg)

DRAWBAR PERFORMANCE
UNBALLASTED - FRONT DRIVE ENGAGED
MANUAL MODE - 2000 ENGINE RPM- 50" REAR TIRES
DRAWBAR POWER AT SELECTED TRAVEL SPEED SETTINGS

Power Hp (kW)	Drawbar pull lbs (kN)	Speed mph (km/h)	Crank- shaft speed rpm	Slip %	Fuel Consumption lb/hp.hr (kg/kW.h)	Hp.hr/gal (kW.h/l)	D.E.F. Consumption lb/hp.hr (kg/kW.h)	Temp.°F(°C) cool- ing med	Air dry bulb	Barom. inch Hg (kPa)
3.6 mph (5.8 km/h)										
242.84 (181.09)	29017 (129.07)	3.14 (5.05)	2002	13.9	0.497 (0.302)	14.09 (2.78)	0.059 (0.036)	207 (97)	66 (19)	28.55 (96.68)
4.2 mph (6.7 km/h)										
262.71 (195.90)	25915 (115.27)	3.80 (6.12)	2000	8.3	0.455 (0.277)	15.39 (3.03)	0.054 (0.033)	205 (96)	68 (20)	28.55 (96.68)
4.7 mph (7.5 km/h)										
268.18 (199.98)	23001 (102.31)	4.37 (7.03)	2000	6.0	0.449 (0.273)	15.61 (3.08)	0.055 (0.033)	195 (91)	60 (15)	28.97 (98.10)
5.2 mph (8.3 km/h)										
272.55 (203.24)	20901 (92.97)	4.89 (7.87)	2000	4.9	0.442 (0.269)	15.87 (3.13)	0.054 (0.033)	206 (97)	57 (14)	28.97 (98.10)
5.6 mph (9.0 km/h)										
274.79 (204.91)	19302 (85.86)	5.34 (8.59)	2000	4.3	0.439 (0.267)	15.95 (3.14)	0.054 (0.033)	207 (97)	56 (13)	28.95 (98.04)
6.2 mph (10.0 km/h)										
275.10 (205.14)	17314 (77.01)	5.96 (9.59)	2000	4.1	0.436 (0.265)	16.06 (3.16)	0.054 (0.033)	205 (96)	59 (15)	28.97 (98.10)
6.8 mph (11.0 km/h)										
273.19 (203.71)	15571 (69.26)	6.58 (10.59)	2000	3.4	0.439 (0.267)	15.96 (3.14)	0.053 (0.033)	200 (93)	62 (16)	28.97 (98.10)
7.5 mph (12.0 km/h)										
269.49 (200.96)	14028 (62.40)	7.20 (11.59)	1999	3.1	0.445 (0.270)	15.76 (3.10)	0.054 (0.033)	203 (95)	63 (17)	28.97 (98.10)
8.1 mph (13.0 km/h)										
264.93 (197.56)	12683 (56.41)	7.84 (12.61)	2000	2.8	0.454 (0.276)	15.43 (3.04)	0.055 (0.033)	198 (92)	62 (17)	28.97 (98.10)
8.7 mph (14.0 km/h)										
272.77 (203.40)	12105 (53.85)	8.45 (13.60)	2000	2.7	0.440 (0.268)	15.92 (3.14)	0.054 (0.033)	206 (97)	62 (17)	28.97 (98.10)

REPAIRS AND ADJUSTMENTS: No repairs or adjustments.

NOTE: This tractor has an engine control feature that allows the engine to run in a "boosted" mode, increased power level, at certain combinations of drawbar loading and remote hydraulic flow.

REMARKS: All test results were determined from observed data obtained in accordance with official OECD, SAE and Nebraska test procedures. This tractor did not meet the manufacturer's claims of: remote hydraulic flow of 44 GPM (166 l/min) with standard pump, remote hydraulic flow of 59 GPM (225 l/min) with high flow pump, nor cab sound level of 67 dB(A). The manufacturer's remote hydraulic flow claim of 75 GPM (282 l/min) was not verified. The performance figures on this summary were taken from a test conducted under the OECD Code 2 test procedure.

We, the undersigned, certify that this is a true and correct report of official Tractor Test No. **2126**, Nebraska Summary 982, January 22, 2016.

Roger M. Hoy
Director

M.F. Kocher
P.J. Jasa
S.K. Pitla
Board of Tractor Test Engineers

TRACTOR SOUND LEVEL WITH CAB	Front Wheel Drive	
	Engaged dB(A)	Disengaged dB(A)
At no load at 4.6 mph (7.5 km/h) engine speed 2210 rpm	69.2	68.9
At no load at 4.6 mph (7.5 km/h) engine speed 1060 rpm	70.4	70.5
Bystander		87.1

TIRES AND WEIGHT
Rear Tires -No., size, ply & psi (kPa)
Front Tires -No., size, ply & psi (kPa)
Height of Drawbar
Static Weight with operator - Rear
- Front
- Total

Tested Without Ballast
Four 480/80R50;***;14(95)
Two 420/85R34;***;26(180)
21.5 in (545 mm)
19285 lb (8748 kg)
12280 lb (5570 kg)
31565 lb (14318 kg)

DRAWBAR PERFORMANCE

UNBALLASTED - FRONT DRIVE ENGAGED - 50" REAR TIRES

AUTOMATIC MODE(Loads based on 2000 engine rpm manual mode performance runs)

DRAWBAR POWER AT SELECTED TRAVEL SPEED SETTINGS

Power Hp (kW)	Drawbar pull lbs (kN)	Speed mph (km/h)	Crank- shaft speed rpm	Slip %	Fuel Consumption lb/hp.hr (kg/kW.h)	Hp.hr/gal (kW.h/l)	D.E.F. Consumption lb/hp.hr (kg/kW.h)	Temp. °F(°C) cool- ing med	Air dry bulb	Barom. inch Hg (kPa)
3.6mph(5.8km/h)										
238.54 (177.88)	28484 (126.70)	3.15 (5.06)	1648	12.7	0.479 (0.291)	14.64 (2.88)	0.054 (0.033)	205 (96)	68 (20)	28.55 (96.68)
4.2mph(6.7 km/h)										
262.40 (195.67)	25844 (114.96)	3.81 (6.13)	1607	8.3	0.446 (0.271)	15.71 (3.09)	0.049 (0.030)	206 (96)	68 (20)	28.55 (96.68)
4.7 mph(7.5 km/h)										
267.47 (199.45)	22951 (102.09)	4.37 (7.03)	1608	6.0	0.431 (0.262)	16.27 (3.20)	0.050 (0.030)	192 (89)	61 (16)	28.97 (98.10)
5.2mph(8.3 km/h)										
272.34 (203.08)	20877 (92.87)	4.89 (7.87)	1606	4.9	0.424 (0.258)	16.53 (3.26)	0.049 (0.030)	200 (93)	58 (14)	28.96 (98.07)
5.6mph(9.0 km/h)										
274.54 (204.72)	19277 (85.75)	5.34 (8.59)	1608	4.3	0.422 (0.257)	16.59 (3.27)	0.049 (0.030)	206 (96)	56 (13)	28.95 (98.04)
6.2mph(10.0 km/h)										
274.90 (204.99)	17301 (76.96)	5.96 (9.59)	1616	4.0	0.424 (0.258)	16.51 (3.25)	0.049 (0.030)	199 (93)	59 (15)	28.97 (98.10)
6.8 mph(11.0 km/h)										
273.13 (203.67)	15550 (69.17)	6.59 (10.61)	1606	3.4	0.420 (0.255)	16.69 (3.29)	0.049 (0.030)	198 (92)	62 (17)	28.97 (98.10)
7.5mph(12.0 km/h)										
269.17 (200.72)	13998 (62.26)	7.21 (11.60)	1611	3.1	0.411 (0.250)	17.04 (3.36)	0.049 (0.030)	198 (92)	62 (17)	28.97 (98.10)
8.1mph(13.0 km/h)										
264.42 (197.17)	12647 (56.26)	7.84 (12.62)	1604	2.8	0.406 (0.247)	17.24 (3.40)	0.049 (0.030)	195 (91)	62 (17)	28.97 (98.10)
8.7mph(14.0 km/h)										
272.01 (202.84)	12062 (53.65)	8.46 (13.61)	1639	2.6	0.407 (0.248)	17.20 (3.39)	0.050 (0.030)	202 (94)	62 (17)	28.97 (98.10)

DRAWBAR PERFORMANCE
UNBALLASTED - FRONT DRIVE ENGAGED
MANUAL MODE - 1800 ENGINE RPM - 50" REAR TIRES
MAXIMUM POWER AT SELECTED TRAVEL SPEED SETTINGS

Power Hp (kW)	Drawbar pull lbs (kN)	Speed mph (km/h)	Crank- shaft speed rpm	Slip %	Fuel Consumption lb/hp.hr (kg/kW.h)	Hp.hr/gal (kW.h/l)	D.E.F. Consumption lb/hp.hr (kg/kW.h)	Temp. °F(°C) cool- ing med	Air dry bulb	Barom. inch Hg (kPa)
3.6 mph (5.8 km/h)										
242.94 (181.16)	29011 (129.05)	3.14 (5.05)	2004	13.6	0.496 (0.302)	14.13 (2.78)	0.059 (0.036)	207 (97)	66 (19)	28.55 (96.68)
4.2 mph (6.7 km/h)										
265.36 (197.88)	26984 (120.03)	3.69 (5.94)	1977	10.9	0.465 (0.283)	15.07 (2.97)	0.054 (0.033)	204 (96)	69 (20)	28.55 (96.68)
4.7 mph (7.5 km/h)										
279.86 (208.69)	26227 (116.66)	4.01 (6.45)	1901	9.6	0.465 (0.283)	15.07 (2.97)	0.051 (0.031)	204 (96)	70 (21)	28.56 (96.71)
5.2 mph (8.3 km/h)										
295.11 (220.06)	25080 (111.56)	4.42 (7.11)	1864	8.0	0.451 (0.274)	15.55 (3.06)	0.048 (0.029)	206 (97)	68 (20)	28.56 (96.71)
5.6 mph (9.0 km/h)										
304.57 (227.12)	24676 (109.76)	4.63 (7.45)	1800	7.9	0.449 (0.273)	15.60 (3.07)	0.045 (0.028)	205 (96)	70 (21)	28.56 (96.71)
6.2 mph (10.0 km/h)										
312.39 (232.95)	22330 (99.33)	5.25 (8.45)	1800	6.0	0.440 (0.268)	15.92 (3.14)	0.044 (0.027)	204 (96)	69 (20)	28.60 (96.85)
6.8 mph (11.0 km/h)										
315.57 (235.32)	20273 (90.18)	5.84 (9.40)	1801	5.1	0.435 (0.264)	16.12 (3.17)	0.047 (0.028)	206 (96)	62 (17)	28.97 (98.10)
7.5 mph (12.0 km/h)										
315.27 (235.09)	18447 (82.05)	6.41 (10.32)	1801	4.3	0.433 (0.263)	16.19 (3.19)	0.047 (0.028)	205 (96)	62 (17)	28.97 (98.10)
8.1 mph (13.0 km/h)										
313.00 (233.40)	16827 (74.85)	6.98 (11.23)	1800	3.8	0.435 (0.265)	16.09 (3.17)	0.047 (0.029)	207 (97)	62 (17)	28.97 (98.10)
8.7 mph (14.0 km/h)										
320.51 (239.00)	15959 (70.99)	7.54 (12.13)	1800	3.5	0.426 (0.259)	16.44 (3.24)	0.046 (0.028)	208 (98)	63 (17)	28.97 (98.10)
9.3 mph (15.0 km/h)										
325.17 (242.48)	15074 (67.05)	8.09 (13.02)	1799	3.3	0.421 (0.256)	16.65 (3.28)	0.046 (0.028)	209 (98)	62 (17)	28.97 (98.10)
*9.9 mph (16.0 km/h)										
341.50 (254.66)	14826 (65.95)	8.64 (13.90)	1801	3.2	0.418 (0.254)	16.76 (3.30)	0.044 (0.027)	212 (100)	62 (17)	28.97 (98.10)

*Engine in power boost mode

DRAWBAR PERFORMANCE
BALLASTED - FRONT DRIVE ENGAGED
MANUAL MODE - 1800 ENGINE RPM- 46" REAR TIRES
DRAWBAR POWER AT SELECTED TRAVEL SPEED SETTINGS

Power Hp (kW)	Drawbar pull lbs (kN)	Speed mph (km/h)	Crank- shaft speed rpm	Slip %	Fuel Consumption lb/hp.hr (kg/kW.h)	Hp.hr/gal (kW.h/l)	D.E.F. Consumption lb/hp.hr (kg/kW.h)	Temp. °F(°C) cool- ing med	Air dry bulb	Barom. inch Hg (kPa)
2.5 mph (4.0 km/h)										
213.64 (159.31)	39037 (173.65)	2.05 (3.30)	2001	12.4	0.564 (0.343)	12.41 (2.45)	0.067 (0.041)	206 (96)	71 (22)	28.64 (96.99)
3.1 mph (5.0 km/h)										
247.77 (184.76)	36011 (160.18)	2.58 (4.15)	1945	9.7	0.511 (0.311)	13.72 (2.70)	0.055 (0.034)	191 (88)	73 (23)	28.82 (97.60)
3.5 mph (5.7 km/h)										
268.24 (200.02)	34527 (153.58)	2.92 (4.69)	1903	8.6	0.487 (0.296)	14.40 (2.84)	0.050 (0.031)	196 (91)	74 (23)	28.82 (97.60)
4.2 mph (6.7 km/h)										
294.59 (219.68)	33147 (147.44)	3.34 (5.37)	1835	7.5	0.459 (0.279)	15.27 (3.01)	0.043 (0.026)	204 (96)	75 (24)	28.83 (97.63)
4.7 mph (7.5 km/h)										
298.08 (222.27)	30071 (133.76)	3.72 (5.98)	1800	6.1	0.460 (0.280)	15.25 (3.00)	0.045 (0.027)	204 (96)	75 (24)	28.83 (97.63)
5.2 mph (8.3 km/h)										
305.36 (227.71)	27569 (122.63)	4.15 (6.68)	1800	5.1	0.449 (0.273)	15.60 (3.07)	0.044 (0.027)	206 (96)	75 (24)	28.84 (97.66)
5.6 mph (9.0 km/h)										
308.60 (230.12)	25523 (113.53)	4.53 (7.29)	1800	4.5	0.443 (0.269)	15.83 (3.12)	0.043 (0.026)	206 (97)	75 (24)	28.83 (97.63)
6.2 mph (10.0 km/h)										
315.59 (235.34)	23261 (103.47)	5.09 (8.19)	1800	3.6	0.434 (0.264)	16.14 (3.18)	0.042 (0.026)	204 (95)	70 (21)	28.84 (97.66)
6.8 mph (11.0 km/h)										
314.10 (234.22)	20944 (93.16)	5.63 (9.05)	1800	3.1	0.437 (0.266)	16.04 (3.16)	0.043 (0.026)	204 (96)	69 (20)	28.84 (97.66)
7.5 mph (12.0 km/h)										
312.22 (232.82)	19026 (84.63)	6.15 (9.90)	1800	2.8	0.440 (0.267)	15.94 (3.14)	0.043 (0.026)	206 (97)	69 (21)	28.84 (97.66)
8.1 mph (13.0 km/h)										
307.95 (229.64)	17271 (76.82)	6.69 (10.77)	1801	2.5	0.445 (0.271)	15.74 (3.10)	0.044 (0.027)	207 (97)	70 (21)	28.84 (97.66)
8.7 mph (14.0 km/h)										
315.78 (235.47)	16404 (72.97)	7.22 (11.62)	1800	2.4	0.432 (0.263)	16.21 (3.19)	0.043 (0.026)	207 (97)	71 (22)	28.84 (97.66)
*9.3 mph (15.0 km/h)										
331.90 (247.49)	16114 (71.68)	7.72 (12.42)	1800	2.4	0.429 (0.261)	16.32 (3.21)	0.042 (0.026)	210 (99)	72 (22)	28.83 (97.63)
*9.9 mph (16.0 km/h)										
334.12 (249.15)	15178 (67.52)	8.26 (13.29)	1801	2.1	0.425 (0.259)	16.48 (3.25)	0.042 (0.026)	209 (98)	73 (23)	28.83 (97.63)

*Engine in power boost mode

TIRES, BALLAST AND WEIGHT

Rear Tires -No., size, ply & psi (kPa)

Ballast - Triples (total)
- Cast Iron (total)

Front Tires -No., size, ply & psi (kPa)

Ballast - Duals (total)
- Cast Iron (total)

Height of Drawbar

Static Weight with operator - Rear
- Front
- Total

With Ballast

Six 480/80R46;***;15(105)

2290 lb (1039 kg)
5720 lb (2594 kg)

Four 420/90R30;***;14(95)

1135 lb (515 kg)
None

20.0 in (510 mm)

27430 lb (12442 kg)
13360 lb (6060 kg)
40790 lb (18502 kg)

Without Ballast

Four 480/80R46;***;14(95)

None
None

Two 420/90R30;***;26(180)

None
None

20.0 in (510 mm)

19420 lb (8809 kg)
12225 lb (5545 kg)
31645 lb (14353 kg)

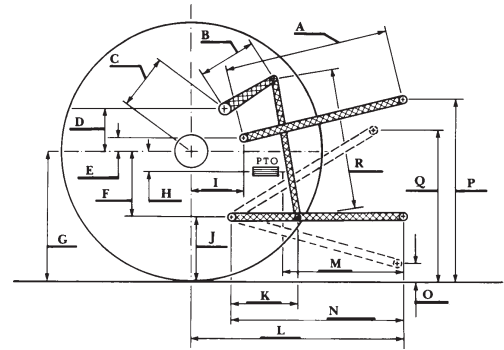
HYDRAULIC PERFORMANCE

CATEGORY: 4N		
Quick Attach: Yes		
OECD Static test		
Maximum force exerted through whole range:	20012 lbs (89.0 kN)	
	Standard pump	High flow pump
	<u>three outlet sets combined</u>	
i) Sustained pressure at compensator cutoff:	2849 psi (196 bar) 2859 psi (197 bar)	
ii) Pump delivery rate at minimum pressure and rated engine speed:	42.5 GPM (161.0 l/min) 55.2 GPM (208.8 l/min)	
iii) Pump delivery rate at maximum hydraulic power:	42.1 GPM (159.4 l/min) 46.0 GPM (174.2 l/min)	
Delivery pressure:	2622 psi (181 bar) 2459 psi (170 bar)	
Power:	64.4 HP (48.0 kW) 66.0 hp (49.2 kW)	
	<u>single outlet set</u>	
i) Sustained pressure at compensator cutoff:	2837 psi (196 bar) 2841 psi (196 bar)	
ii) Pump delivery rate at minimum pressure and rated engine speed:	42.1 GPM (159.5 l/min) 43.3 GPM (164.0 l/min)	
iii) Pump delivery rate at maximum hydraulic power:	39.5 GPM (149.6 l/min) 39.4 GPM (149.2 l/min)	
Delivery pressure:	2231 psi (154 bar) 2205 psi (152 bar)	
Power:	51.5 HP (38.4 kW) 50.7 hp (37.8 kW)	

HITCH DIMENSIONS AS TESTED—NO LOAD

	inch	mm
A	29.7	755
B	20.5	520
C	22.9	581
D	20.7	525
E	10.5	266
F	15.7	400
G	36.6	930
H	3.5	90
I	20.9	530
J	20.9	530
K	30.2	768
L	53.1	1350
*L'	60.4	1534
M	27.2	691
N	38.2	970
O	9.0	230
P	48.4	1230
Q	40.9	1040
R	40.7	1035

*L' to Quick Attach ends



CASE IH MAGNUM 380 DIESEL