

NEBRASKA OECD TRACTOR TEST 2125A–SUMMARY 988A

CASE IH MAGNUM 340 DIESEL

19 SPEED

CHASSIS SERIAL NUMBERS ZERF04500 AND HIGHER

POWER TAKE-OFF PERFORMANCE

Power HP (kW)	Crank shaft speed rpm	Diesel Consumption		D.E.F. Consumption		Mean Atmospheric Conditions
		Gal/hr (l/h)	lb/hp.hr (kg/kW.h)	Hp.hr/gal (kW.h/l)	Gal/hr (l/h)	
MAXIMUM POWER AND FUEL CONSUMPTION						
Rated Engine Speed—(PTO speed—1109 rpm)						
301.68 (224.96)	2000	15.77 (59.71)	0.365 (0.222)	19.13 (3.77)	1.63 (6.16)	
Standard Power Take-off Speed (998 rpm)						
336.17 (250.68)	1800	17.17 (64.99)	0.357 (0.217)	19.58 (3.86)	1.73 (6.57)	
Maximum Power (1 hour)						
336.17 (250.68)	1800	17.17 (64.99)	0.357 (0.217)	19.58 (3.86)	1.73 (6.57)	

VARYING POWER AND FUEL CONSUMPTION

301.68 (224.96)	2000	15.77 (59.71)	0.365 (0.222)	19.13 (3.77)	1.63 (6.16)	Air temperature
271.37 (202.36)	2116	14.79 (55.99)	0.381 (0.232)	18.35 (3.61)	1.35 (5.10)	74°F (24°C)
206.58 (154.05)	2146	11.86 (44.90)	0.401 (0.244)	17.42 (3.43)	0.89 (3.38)	Relative humidity
139.84 (104.28)	2178	8.90 (33.70)	0.445 (0.271)	15.71 (3.09)	0.55 (2.08)	71%
71.13 (53.04)	2212	5.90 (22.32)	0.579 (0.352)	12.07 (2.38)	0.38 (1.43)	Barometer
1.63 (1.22)	2227	2.93 (11.10)	12.549 (7.633)	0.56 (0.11)	0.31 (1.17)	28.71" Hg (97.21 kPa)

Maximum torque - 1141 lb.-ft. (1547 Nm) at 1399 rpm
 Maximum torque rise - 44.0%
 Torque rise at 1600 engine rpm - 38%
 Power increase at 1800 engine rpm - 11.4%

DRAWBAR PERFORMANCE

UNBALLASTED - FRONT DRIVE ENGAGED

FUEL CONSUMPTION CHARACTERISTICS

Power Hp (kW)	Drawbar pull lbs (kN)	Speed mph (km/h)	Crank- shaft speed rpm	Slip %	Fuel Consumption lb/hp.hr (kg/kW.h)	D.E.F. Consumption lb/hp.hr (kg/kW.h)	Temp. °F(°C)	Barom. inch Hg (kPa)
Maximum Power—8th Gear								
259.32 (193.37)	18641 (82.92)	5.22 (8.39)	1999	5.6	0.426 (0.259)	16.40 (3.23)	208 (98)	69 (21)
75% of Pull at Maximum Power—8th Gear								
211.12 (157.43)	13948 (62.04)	5.68 (9.14)	2131	3.7	0.443 (0.270)	15.76 (3.10)	208 (98)	73 (23)
50% of Pull at Maximum Power—8th Gear								
145.75 (108.69)	9306 (41.40)	5.87 (9.45)	2172	2.2	0.492 (0.300)	14.19 (2.79)	204 (96)	74 (23)
75% of Pull at Reduced Engine Speed—11th Gear								
211.25 (157.53)	13916 (61.90)	5.69 (9.16)	1408	3.6	0.405 (0.246)	17.26 (3.40)	203 (95)	75 (24)
50% of Pull at Reduced Engine Speed—11th Gear								
145.58 (108.56)	9326 (41.48)	5.85 (9.41)	1427	2.2	0.424 (0.258)	16.48 (3.25)	202 (94)	74 (23)

Location of tests: Nebraska Tractor Test Laboratory, University of Nebraska, Lincoln, Nebraska 68583-0832

Dates of tests: September 8 - 17, 2015

Manufacturer: CNH America LLC, 700 State St. Racine, WI 53404 USA

CONSUMABLE Fluids, OIL and TIME: Fuel No. 2 Diesel **Specific gravity converted to 60°/60°F (15°/15°C)** 0.8390 **Fuel weight** 6.986 lbs/gal (0.838 kg/l) **Diesel Exhaust Fluid (DEF)** 32% aqueous urea solution **DEF weight** 9.071 lbs/gal (1.087 kg/l) **Oil SAE 10W40 API service classification** CJ-4 **Transmission and hydraulic lubricant** Case IH Hy-Tran Ultra fluid **Front axle lubricant** SAE 85W-140 API GL-5 **Total time engine was operated:** 13.5 hours

ENGINE: Make F.P.T. Diesel **Type** six cylinder vertical with turbocharger, air to air intercooler and D.E.F. (diesel exhaust fluid) exhaust treatment. **Serial No.** *14H00075793* **Crankshaft** lengthwise **Rated engine speed** 2000 **Bore and stroke** 4.606" x 5.315" (117.0 mm x 135.0 mm) **Compression ratio** 15.9 to 1 **Displacement** 531 cu in (8704 ml) **Starting system** 12 volt **Lubrication** pressure **Air cleaner** two paper elements and aspirator **Oil filter** one full flow cartridge **Oil cooler** engine coolant heat exchanger for crankcase oil, radiator for hydraulic and transmission oil **Fuel filter** two paper elements **Fuel cooler** radiator for pump return fuel **Exhaust DOC** (diesel oxidation catalyst) and SCR (selective catalyst reduction) integrated within a vertical muffler **Cooling medium temperature control** thermostat and variable speed fan

ENGINE OPERATING PARAMETERS: Fuel rate: 105.4 - 112.0 lb/h (47.8 - 50.8 kg/h) **High idle:** 2200 - 2250 rpm **Turbo boost:** nominal 23.2 - 26.1 psi (160 - 180 kPa) as measured 24.4 psi (168 kPa)

CHASSIS: Type front wheel assist with duals **Serial No.** *ZFRE01628* **Tread width** rear 64.0" (1626 mm) to 129.0" (3277 mm) front 60.0" (1524 mm) to 88.0" (2235 mm) **Wheelbase** 120.3" (3055 mm) **Hydraulic control system** direct engine drive **Transmission** selective gear fixed ratio with full range operator controlled powershift **Nominal travel speeds mph (km/h)** first 2.06 (3.32) second 2.36 (3.80) third 2.73 (4.39) fourth 3.13 (5.03) fifth 3.59 (5.77) sixth 4.11 (6.62) seventh 4.80 (7.72) eighth 5.51 (8.86) ninth 6.35 (10.22) tenth 7.28 (11.72) eleventh 8.35 (13.44) twelfth 9.58 (15.42) thirteenth 11.94 (19.21) fourteenth 13.70 (22.04) fifteenth 15.80 (25.42) sixteenth 18.11 (29.15) seventeenth 20.79 (33.45) eighteenth 23.84 (38.37) nineteenth 26.10 (42.00) electronically limited reverse 2.96 (4.77), 3.41 (5.48), 6.91 (11.12), 7.92 (12.75)

DRAWBAR PERFORMANCE
UNBALLASTED - FRONT DRIVE ENGAGED
MAXIMUM POWER IN SELECTED GEARS

Power Hp (kW)	Drawbar pull lbs (kN)	Speed mph (km/h)	Crank- shaft speed rpm	Slip %	Fuel Consumption lb/hp.hr (kg/kW.h)	D.E.F. Consumption lb/hp.hr (kg/kW.h)	Temp. °F(°C) cool- ing med	Air dry bulb	Barom. inch Hg (kPa)	
					5th Gear					
216.27 (161.27)	24445 (108.73)	3.32 (5.34)	2116	13.1	0.480 (0.292)	14.56 (2.87)	0.061 (0.037)	197 (92)	57 (14)	28.95 (98.04)
					6th Gear					
242.49 (180.82)	23418 (104.17)	3.89 (6.25)	2087	10.1	0.457 (0.278)	15.29 (3.01)	0.062 (0.038)	210 (99)	58 (14)	28.96 (98.07)
					7th Gear					
252.91 (188.59)	21377 (95.09)	4.44 (7.15)	2000	8.0	0.436 (0.265)	16.03 (3.16)	0.058 (0.036)	209 (98)	70 (21)	28.73 (97.29)
					8th Gear					
259.32 (193.37)	18641 (82.92)	5.22 (8.39)	1999	5.6	0.426 (0.259)	16.40 (3.23)	0.057 (0.035)	208 (98)	69 (21)	28.72 (97.26)
					9th Gear					
263.36 (196.38)	16172 (71.94)	6.11 (9.83)	2000	4.2	0.418 (0.254)	16.72 (3.29)	0.056 (0.034)	208 (98)	64 (18)	28.73 (97.29)
					10th Gear					
260.76 (194.45)	13842 (61.57)	7.06 (11.36)	2000	3.4	0.423 (0.257)	16.51 (3.25)	0.056 (0.034)	208 (98)	65 (18)	28.73 (97.29)
					11th Gear					
255.36 (190.42)	11737 (52.21)	8.16 (13.13)	2000	2.7	0.431 (0.262)	16.21 (3.19)	0.057 (0.035)	208 (98)	67 (19)	28.74 (97.33)

TRACTOR SOUND LEVEL WITH CAB	Front Wheel Drive	
	Engaged dB(A)	Disengaged dB(A)
At no load in 7th gear	66.7	66.9
Bystander in 18th gear	66.7	85.2

TIRES AND WEIGHT

Rear Tires - No., size, ply & psi(kPa)
Front Tires - No., size, ply & psi(kPa)
Height of Drawbar
Static Weight with operator - Rear
- Front
- Total

Tested Without Ballast
Four 480/80R50;***;12(85)
Two 380/80R38;***;23(160)
21.0 in (535 mm)
17965 lb (8149 kg)
9995 lb (4534 kg)
27960 lb(12683 kg)

Clutch multiple wet disc electrohydraulically operated by foot pedal **Brakes** wet disc hydraulically operated by two foot pedals that can be locked together **Steering** hydrostatic **Power take-off** 1000 rpm at 1803 engine rpm **Unladen tractor mass** 27785 lb (12603 kg)

REPAIRS AND ADJUSTMENTS: No repairs or adjustments.

NOTE 1: The data on this summary was obtained from testing conducted on the New Holland T8.410 Diesel.

NOTE 2: The performance figures on this report apply to tractors with chassis serial numbers ZERF04500 and higher.

REMARKS: All test results were determined from observed data obtained in accordance with official OECD, SAE and Nebraska test procedures. This tractor did not meet the manufacturer's remote hydraulic flow claims of 44 GPM (166 l/min) nor 59 GPM (225 l/min). The manufacturer's remote hydraulic flow claim of 75 GPM (282 l/min) was not verified. The performance results on this summary were taken from a test conducted under the OECD Code 2 test procedure.

We, the undersigned, certify that this is a true and correct report of official Tractor Test No. **2125A**, Nebraska Summary 988A, January 22, 2016.

Roger M. Hoy
Director

M.F. Kocher
P.J. Jasa
J.D. Luck
Board of Tractor Test Engineers

DRAWBAR PERFORMANCE AT 1800 ENGINE RPM
UNBALLASTED - FRONT DRIVE ENGAGED
MAXIMUM POWER IN SELECTED GEARS

Power Hp (kW)	Drawbar pull lbs (kN)	Speed mph (km/h)	Crank- shaft speed rpm	Slip %	Fuel Consumption lb/hp.hr (kg/kW.h)	Consumption Hp.hr/gal (kW.h/l)	D.E.F. Consumption lb/hp.hr (kg/kW.h)	Temp. ² F(°C) cool- ing med	Air dry bulb	Barom. inch Hg (kPa)
5th Gear										
216.70 (161.59)	24447 (108.74)	3.33 (5.35)	2116	13.0	0.479 (0.291)	14.58 (2.87)	0.061 (0.037)	197 (91)	57 (14)	28.96 (98.07)
6th Gear										
242.75 (181.01)	23429 (104.22)	3.89 (6.25)	2088	10.0	0.456 (0.277)	15.32 (3.02)	0.061 (0.037)	208 (98)	58 (14)	28.95 (98.04)
7th Gear										
259.74 (193.69)	22621 (100.62)	4.31 (6.94)	1960	8.9	0.434 (0.264)	16.12 (3.17)	0.060 (0.037)	209 (98)	60 (15)	28.96 (98.07)
8th Gear										
278.69 (207.82)	21740 (96.70)	4.81 (7.74)	1889	7.9	0.425 (0.258)	16.44 (3.24)	0.058 (0.035)	208 (98)	60 (16)	28.95 (98.04)
9th Gear										
288.95 (215.47)	20281 (90.21)	5.35 (8.60)	1800	6.9	0.415 (0.253)	16.82 (3.31)	0.059 (0.036)	209 (98)	61 (16)	28.97 (98.10)
10th Gear										
294.14 (219.34)	17610 (78.33)	6.26 (10.07)	1800	4.9	0.410 (0.249)	17.05 (3.36)	0.054 (0.033)	209 (98)	66 (19)	28.74 (97.33)
11th Gear										
292.65 (218.23)	15128 (67.29)	7.26 (11.68)	1800	3.9	0.411 (0.250)	17.01 (3.35)	0.054 (0.033)	208 (98)	67 (20)	28.73 (97.29)
12th Gear										
292.59 (218.18)	13089 (58.22)	8.38 (13.49)	1800	3.3	0.413 (0.251)	16.92 (3.33)	0.054 (0.033)	208 (98)	68 (20)	28.74 (97.33)

HYDRAULIC PERFORMANCE

CATEGORY: 4N

Quick Attach: Yes

OECD Static test

Maximum force exerted through whole range:

18028 lbs (80.2 kN)

Standard pump **High flow pump**
three outlet sets combined

i) Sustained pressure at compensator cutoff:

2849 psi (196 bar) 2938 psi (203 bar)

ii) Pump delivery rate at minimum pressure and rated engine speed:

42.5 GPM (161.0 l/min) 57.9 GPM (219.1 l/min)

iii) Pump delivery rate at maximum hydraulic power:

42.1 GPM (159.4 l/min) 58.2 GPM (220.2 l/min)

Delivery pressure:

2622 psi (181 bar) 2524 psi (174 bar)

Power:

64.4 HP (48.0 kW) 85.7 hp (63.9 kW)

i) Sustained pressure at compensator cutoff:

2837 psi (196 bar) 2885 psi (199 bar)

ii) Pump delivery rate at minimum pressure and rated engine speed:

42.1 GPM (159.5 l/min) 42.0 GPM (159.1 l/min)

iii) Pump delivery rate at maximum hydraulic power:

39.5 GPM (149.6 l/min) 36.9 GPM (139.9 l/min)

Delivery pressure:

2231 psi (154 bar) 2169 psi (150 bar)

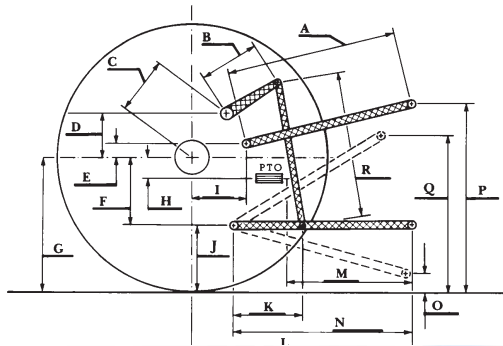
Power:

51.5 HP (38.4 kW) 46.8 hp (34.9 kW)

HITCH DIMENSIONS AS TESTED—NO LOAD

	inch	mm
A	29.7	755
B	20.5	520
C	22.9	581
D	20.7	525
E	7.9	200
F	15.7	400
G	36.6	930
H	3.5	90
I	20.9	530
J	20.9	530
K	30.2	768
L	51.0	1295
*L'	58.1	1475
M	25.0	636
N	43.1	1095
O	9.0	230
P	48.4	1230
Q	42.7	1085
R	38.4	975

*L' to Quick Attach ends



CASE IH MAGNUM 340 DIESEL