

# NEBRASKA OECD TRACTOR TEST 2050—SUMMARY 863

## NEW HOLLAND TS6.140 DIESEL

### 8 SPEED

#### POWER TAKE-OFF PERFORMANCE

Power HP (kW)	Crank shaft speed rpm	Gal/hr (l/h)	lb/hp.hr (kg/kW.h)	Hp.hr/gal (kW.h/l)	Mean Atmospheric Conditions
<b>MAXIMUM POWER AND FUEL CONSUMPTION</b>					
<b>Rated Engine Speed—(PTO speed—1074 rpm)</b>					
116.27 (86.70)	2200	8.48 (32.10)	0.511 (0.311)	13.71 (2.70)	
<b>Standard Power Take-off Speed (1000 rpm)</b>					
120.22 (89.65)	2049	8.21 (31.10)	0.479 (0.291)	14.63 (2.88)	
<b>Maximum Power (1 hour)</b>					
126.47 (94.31)	1750	7.64 (28.94)	0.424 (0.258)	16.54 (3.26)	

#### VARYING POWER AND FUEL CONSUMPTION

116.27 (86.70)	2200	8.48 (32.10)	0.511 (0.311)	13.71 (2.70)	Air temperature
104.00 (77.55)	2314	8.04 (30.45)	0.542 (0.330)	12.93 (2.55)	73°F (23°C)
78.80 (58.76)	2335	6.82 (25.83)	0.607 (0.369)	11.55 (2.27)	Relative humidity
52.60 (39.22)	2341	5.28 (19.99)	0.704 (0.428)	9.96 (1.96)	16%
26.70 (19.91)	2377	3.58 (13.56)	0.940 (0.572)	7.45 (1.47)	Barometer
1.20 (0.89)	2415	2.51 (9.51)	14.667 (8.921)	0.48 (0.09)	28.94 Hg (98.00 kPa)

Maximum torque - 510 lb.-ft. (691 Nm) at 1000 rpm  
 Maximum torque rise - 84.0%  
 Torque rise at 1760 engine rpm - 36%  
 Power increase at 1750 engine rpm - 8.8%

#### DRAWBAR PERFORMANCE UNBALLASTED - FRONT DRIVE ENGAGED FUEL CONSUMPTION CHARACTERISTICS

Power Hp (kW)	Drawbar pull lbs (kN)	Speed mph (km/h)	Crank- shaft speed rpm	Slip %	Fuel Consumption lb/hp.hr (kg/kW.h)	Hp.hr/gal (kW.h/l)	Temp. °F (°C) cool- ing med	Air dry bulb	Barom. inch Hg (kPa)
<b>Maximum Power—5th (H1) Gear</b>									
103.64 (77.28)	6321 (28.11)	6.15 (9.90)	2200	7.5	0.580 (0.353)	12.08 (2.38)	185 (85)	47 (8)	28.74 (97.33)
<b>75% of Pull at Maximum Power—5th (H1) Gear</b>									
83.78 (62.47)	4721 (21.00)	6.66 (10.71)	2326	5.4	0.634 (0.386)	11.05 (2.18)	186 (86)	59 (15)	28.66 (97.05)
<b>50% of Pull at Maximum Power—5th (H1) Gear</b>									
56.38 (42.04)	3114 (13.85)	6.79 (10.93)	2338	3.8	0.730 (0.444)	9.60 (1.89)	185 (85)	59 (15)	28.66 (97.05)
<b>75% of Pull at Reduced Engine Speed—6th (H2) Gear</b>									
83.54 (62.29)	4788 (21.30)	6.55 (10.53)	1484	5.4	0.449 (0.273)	15.62 (3.08)	180 (82)	58 (14)	28.65 (97.02)
<b>50% of Pull at Reduced Engine Speed—6th (H2) Gear</b>									
56.66 (42.25)	3100 (13.79)	6.86 (11.03)	1526	3.6	0.487 (0.296)	14.38 (2.83)	182 (83)	59 (15)	28.66 (97.05)

**Location of tests:** Nebraska Tractor Test Laboratory, University of Nebraska, Lincoln Nebraska 68583-0832

**Dates of tests:** November 27 - December 6, 2012

**Manufacturer:** CNH De Mexico, Queretaro Mexico

**FUEL, OIL and TIME:** Fuel No. 2 Diesel Specific gravity converted to 60°/60° F (15°/15° C) 0.8417 Fuel weight 7.008 lbs/gal (0.840 kg/l) Oil SAE 15W40 API service classification CI-4 Transmission and hydraulic lubricant New Holland M2C134D fluid Front axle lubricant New Holland M2C134D fluid Total time engine was operated 17.5 hours

**ENGINE:** Make F.P.T NEF series Diesel Type six cylinder vertical with turbocharger and air to air intercooler Serial No. 908209 Crankshaft lengthwise Rated engine speed 2200 Bore and stroke 4.094" x 5.197" (104.0 mm x 132.0 mm) Compression ratio 17.5 to 1 Displacement 410 cu in (6728 ml) Starting system 12 volt Lubrication pressure Air cleaner two paper elements Oil filter one full flow cartridge Oil cooler engine coolant heat exchanger for crankcase oil, radiator for hydraulic and transmission oil Fuel filter one paper element Muffler vertical Cooling medium temperature control one thermostat

**ENGINE OPERATING PARAMETERS:** Fuel rate: 56.2 - 59.9 lb/h (25.5 - 27.2 kg/h) High idle: 2350 - 2450 rpm Turbo boost: nominal 16.0 - 18.9 psi (110 - 130 kPa) as measured 17.4 psi (120 kPa)

**CHASSIS:** Type front wheel assist Serial No. NH000473M Tread width rear 62.0" (1575 mm) to 92.0" (2337 mm) front 64.0" (1626 mm) to 80.0" (2032 mm) Wheelbase 104.0" (2642 mm) Hydraulic control system direct engine drive Transmission selective gear fixed ratio Nominal travel speeds mph (km/h) first 1.78 (2.85) second 2.73 (4.39) third 3.71 (5.96) fourth 5.14 (8.27) fifth 6.54 (10.52) sixth 10.06 (16.20) seventh 13.66 (22.00) eighth 18.98 (30.54) reverse 1.83 (2.95), 2.82 (4.54), 3.83 (6.17), 5.32 (8.56), 6.76 (10.88), 10.40 (16.75), 14.13 (22.74), 19.62 (31.59) Clutch single dry disc operated by foot pedal Brakes single wet disc operated by two foot pedals which can be locked together Steering hydrostatic Power take-off 540 rpm at 1890 engine rpm or 1000 rpm at 2049 engine rpm Unladen tractor mass 11000 lb (4989 kg)

**DRAWBAR PERFORMANCE**  
**UNBALLASTED - FRONT DRIVE ENGAGED**  
**MAXIMUM POWER IN SELECTED GEARS**

Power Hp (kW)	Drawbar pull lbs (kN)	Speed mph (km/h)	Crank- shaft speed rpm	Slip %	Fuel Consumption lb/hp.hr (kg/kW.h)	Consumption Hp.hr/gal (kW.h/l)	Temp. °F (°C) cool- ing med	Air dry bulb	Barom. inch Hg (kPa)
3rd(L3)Gear									
81.27 (60.60)	9034 (40.18)	3.38 (5.43)	2312	14.9	0.688 (0.419)	10.18 (2.01)	185 (85)	51 (10)	28.71 (97.22)
4th(L4)Gear									
99.47 (74.17)	8048 (35.80)	4.64 (7.46)	2200	11.4	0.605 (0.368)	11.58 (2.28)	184 (84)	47 (8)	28.74 (97.33)
5th(H1) Gear									
103.64 (77.28)	6321 (28.11)	6.15 (9.90)	2200	7.5	0.580 (0.353)	12.08 (2.38)	185 (85)	47 (8)	28.74 (97.33)
6th(H2) Gear									
101.91 (75.99)	3921 (17.44)	9.75 (15.68)	2197	4.7	0.586 (0.356)	11.96 (2.36)	185 (85)	54 (12)	28.70 (97.19)

**UNBALLASTED - FRONT DRIVE ENGAGED-1750 RPM**

Power Hp (kW)	Drawbar pull lbs (kN)	Speed mph (km/h)	Crank- shaft speed rpm	Slip %	Fuel Consumption lb/hp.hr (kg/kW.h)	Consumption Hp.hr/gal (kW.h/l)	Temp. °F (°C) cool- ing med	Air dry bulb	Barom. inch Hg (kPa)
3rd(L3)Gear									
81.40 (60.70)	9038 (40.20)	3.38 (5.43)	2312	14.8	0.685 (0.417)	10.23 (2.02)	185 (85)	51 (11)	28.71 (97.22)
4th(L4)Gear									
100.13 (74.66)	8099 (36.02)	4.64 (7.47)	2198	11.4	0.603 (0.367)	11.62 (2.29)	184 (84)	47 (8)	28.73 (97.29)
5th(H1)Gear									
107.61 (80.24)	8072 (35.91)	5.00 (8.05)	1863	11.2	0.519 (0.316)	13.51 (2.66)	182 (83)	48 (9)	28.73 (97.29)
6th(H2)Gear									
111.17 (82.90)	5469 (24.33)	7.63 (12.27)	1751	6.4	0.483 (0.294)	14.51 (2.86)	183 (84)	55 (13)	28.69 (97.16)

<b>TRACTOR SOUND LEVEL WITH CAB</b>	<b>Front Wheel Drive</b>	
	<b>Engaged dB(A)</b>	<b>Disengaged dB(A)</b>
At no load in 4th (4L) gear	81.7	81.7
Bystander in 8th (4H) gear		87.0

**TIRES AND WEIGHT**

**Rear Tires** - No., size, ply & psi(kPa)  
**Front Tires** - No., size, ply & psi(kPa)  
**Height of Drawbar**  
**Static Weight with operator** - Rear  
- Front  
- Total

**Tested Without Ballast**

Two 18.4-38;8;16(110)  
Two 14.9-28;8;16(110)  
25.0 in (635 mm)  
6650 lb (3016 kg)  
4525 lb (2053 kg)  
11175 lb (5069 kg)

**REPAIRS AND ADJUSTMENTS:** No repairs or adjustments.

**REMARKS:** All test results were determined from observed data obtained in accordance with official OECD, SAE and Nebraska test procedures. This tractor did not meet the manufacturer's implement flow claim of 22 GPM (83 L/min). For the maximum power tests the fuel temperature at the fuel pump return was maintained at 165°F (74°C). The performance figures on this summary were taken from a test conducted under the OECD Code II test code procedure.

We, the undersigned, certify that this is a true and correct report of official Tractor Test No. **2050**, Nebraska Summary 863, December 21, 2012.

Roger M. Hoy  
Director

M.R. Riley  
P.J. Jasa  
J.D. Luck  
Board of Tractor Test Engineers

## HYDRAULIC PERFORMANCE

CATEGORY: II

Quick Attach: None

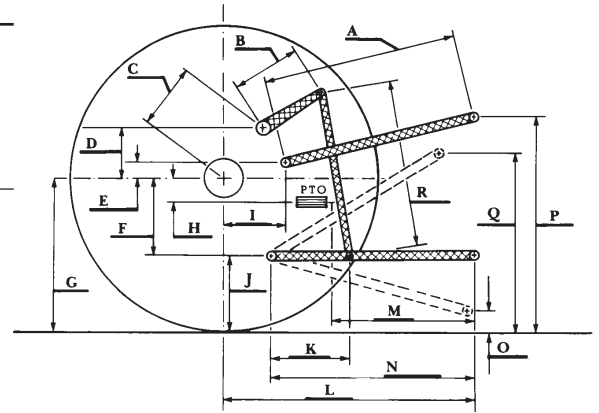
OECD Static test

Maximum force exerted through whole range:  
 3096 lbs (13.77 kN)  
 4608 lbs (20.50 kN)(1 external lift cylinder)  
 6174 lbs (27.46 kN)(2 external lift cylinders)

	Single pump system	Two pump system
	<b>two outlet sets combined</b>	
i) Sustained pressure of the open relief valve:	2514 psi (173 bar)	2413 psi (166 bar)
ii) Pump delivery rate at minimum pressure and rated engine speed:	13.6 GPM (51.4 l/min)	20.2 GPM (76.5 l/min)
iii) Pump delivery rate at maximum		
hydraulic power:	13.2 GPM (49.8 l/min)	17.4 GPM (65.9 l/min)
Delivery pressure:	2310 psi (159 bar)	1725 psi (119 bar)
Power:	17.7 HP (13.2 kW)	17.5 HP (13.1 kW)
	<b>single outlet set</b>	
i) Sustained pressure of the open relief valve:	2530 psi (174 bar)	2431 psi (168 bar)
ii) Pump delivery rate at minimum pressure and rated engine speed:	13.6 GPM (51.4 l/min)	16.4 GPM (61.9 l/min)
iii) Pump delivery rate at maximum		
hydraulic power:	12.6 GPM (47.8 l/min)	15.5 GPM (58.7 l/min)
Delivery pressure:	2204 psi (152 bar)	1773 psi (122 bar)
Power:	16.3 HP (12.1 kW)	16.0 HP (12.0 kW)

### THREE POINT HITCH PERFORMANCE (SAE Static test)

Observed maximum pressure psi. (bar)	2480 (171)				
Location:	lift cylinder				
Hydraulic oil temperature: °F (°C)	145 (63)				
Location:	pump inlet				
Category:	II				
Quick attach:	none				
System pressure 2210 psi (152 Bar)					
Hitch point distance to ground level in. (mm)	8.0 (203)	15.0 (381)	22.0 (559)	29.0 (737)	36.0 (914)
Lift force on frame lb	4374	4244	4127	4257	3735
" " " " " " (kN)	(19.5)	(18.9)	(18.4)	(18.9)	(16.6)
<b>One external lift cylinder</b>					
System pressure 2210 psi (152 Bar)					
Hitch point distance to ground level in. (mm)	8.0 (203)	15.0 (381)	22.0 (559)	29.0 (737)	36.0 (914)
Lift force on frame lb	6764	6444	6174	6300	5499
" " " " " " (kN)	(30.1)	(28.7)	(27.5)	(28.0)	(24.5)
<b>Two external lift cylinders</b>					
System pressure 2210 psi (152 Bar)					
Hitch point distance to ground level in. (mm)	8.0 (203)	15.0 (381)	22.0 (559)	29.0 (737)	36.0 (914)
Lift force on frame lb	9270	8622	8199	8361	7326
" " " " " " (kN)	(41.2)	(38.4)	(36.5)	(37.2)	(32.6)



### HITCH DIMENSIONS AS TESTED—NO LOAD

	SAE Test		OECD Test	
	inch	mm	inch	mm
A	27.7	705	28.5	724
B	9.8	250	9.8	250
C	14.1	357	14.1	357
D	13.5	342	13.5	342
E	8.1	205	8.1	205
F	9.0	229	9.0	229
G	30.3	770	30.3	770
H	0.4	10	0.4	10
I	12.7	323	12.7	323
J	21.3	541	21.3	541
K	18.1	460	18.1	460
L	40.8	1037	40.8	1037
M	22.9	581	22.9	581
N	36.6	930	36.6	930
O	8.0	203	8.0	203
P	40.3	1024	45.3	1151
Q	34.0	864	34.0	864
R	32.5	826	32.5	826



**NEW HOLLAND TS6.140 DIESEL**

Institute of Agriculture and Natural Resources  
 University of Nebraska-Lincoln