

SUMMARY OF OECD TEST 2753-NEBRASKA SUMMARY 899

MASSEY FERGUSON 7615 DYNA 4 DIESEL

16 SPEED

POWER TAKE-OFF PERFORMANCE

| Power HP (kW) | Crank shaft speed rpm | Diesel Consumption | | D.E.F. Consumption | | Mean Atmospheric Conditions |
|---|--------------------------------|-----------------------|-----------------------|-----------------------|-----------------|--------------------------------|
| | | Gal/hr (l/h) | lb/hp.hr (kg/kW.h) | Hp.hr/gal (kW.h/l) | Gal/hr (l/h) | |
| MAXIMUM POWER AND FUEL CONSUMPTION | | | | | | |
| Rated Engine Speed—(PTO speed—1035 rpm) | | | | | | |
| 127.1 (94.8) | 2101 | 7.55 (28.58) | 0.413 (0.252) | 16.85 (3.32) | 0.31 (1.18) | |
| Standard Power Take-off Speed (1000 rpm) | | | | | | |
| 137.7 (102.7) | 2030 | 7.93 (30.01) | 0.401 (0.244) | 17.36 (3.42) | 0.35 (1.34) | |
| Maximum Power (1 hour) | | | | | | |
| 141.9 (105.8) | 2000 | 8.05 (30.47) | 0.396 (0.241) | 17.61 (3.47) | 0.34 (1.31) | |

VARYING POWER AND FUEL CONSUMPTION

| | | | | | | |
|-----------------|------|-----------------|------------------|-----------------|----------------|----------------------|
| 127.1 (94.8) | 2101 | 7.55 (28.58) | 0.413 (0.252) | 16.85 (3.32) | 0.31 (1.18) | Air temperature |
| 108.8 (81.1) | 2118 | 6.69 (25.33) | 0.430 (0.261) | 16.22 (3.20) | 0.30 (1.12) | 68°F (20°C) |
| 81.7 (60.9) | 2127 | 5.46 (20.66) | 0.465 (0.283) | 14.97 (2.95) | 0.22 (0.85) | Relative humidity |
| 55.3 (41.2) | 2137 | 4.23 (16.02) | 0.534 (0.325) | 13.05 (2.57) | 0.17 (0.64) | 45% |
| 27.6 (20.6) | 2146 | 3.05 (11.54) | 0.769 (0.468) | 9.06 (1.79) | 0.12 (0.46) | Barometer |
| -- | 2155 | 1.99 (7.53) | -- | -- | -- | 29.9" Hg (101.1 kPa) |

Maximum torque - 458.1 lb.-ft. (621.1 Nm) at 1200 rpm
 Maximum torque rise - 44.1%
 Torque rise at 1700 engine rpm - 30%
 Power increase at 2000 engine rpm - 11.6%

DRAWBAR PERFORMANCE (Unballasted - Front Drive Engaged) FUEL CONSUMPTION CHARACTERISTICS

| Power Hp (kW) | Drawbar pull lbs (kN) | Speed mph (km/h) | Crank- shaft speed rpm | Slip % | Fuel Consumption lb/hp.hr (kg/kW.h) | Hp.hr/gal (kW.h/l) | Temp.°F (°C) cool- ing med | Air dry bulb | Barom. inch Hg (kPa) |
|--|--------------------------------|------------------------|---------------------------------|-----------|---|-----------------------|-------------------------------------|--------------------|-------------------------------|
| Maximum Power—9th(3A) Gear | | | | | | | | | |
| 106.6 (79.5) | 6875 (30.6) | 5.82 (9.36) | 2096 | 4.7 | 0.461 (0.280) | 15.08 (2.97) | 181 (83) | 59 (15) | 29.8 (101.0) |
| 75% of Pull at Maximum Power—9th(3A) Gear | | | | | | | | | |
| 81.8 (61.0) | 5170 (23.0) | 5.93 (9.55) | 2130 | 4.2 | 0.498 (0.303) | 13.96 (2.75) | 180 (82) | 59 (15) | 29.8 (101.0) |
| 50% of Pull at Maximum Power—9th(3A) Gear | | | | | | | | | |
| 54.8 (40.9) | 3400 (15.1) | 6.05 (9.73) | 2137 | 2.3 | 0.598 (0.364) | 11.62 (2.29) | 178 (81) | 59 (15) | 29.8 (101.0) |
| 75% of Pull at Reduced Engine Speed—10th(3B) Gear | | | | | | | | | |
| 81.8 (61.0) | 5205 (23.1) | 5.90 (9.49) | 1703 | 4.1 | 0.445 (0.271) | 15.63 (3.08) | 178 (81) | 59 (15) | 29.8 (101.0) |
| 50% of Pull at Reduced Engine Speed—10th(3B) Gear | | | | | | | | | |
| 55.5 (41.4) | 3430 (15.2) | 6.07 (9.77) | 1732 | 2.4 | 0.496 (0.302) | 14.01 (2.76) | 178 (81) | 59 (15) | 29.8 (101.0) |

Location of tests: IRSTEA, Centre d'Antony, 1 rue Pierre-Gilles de Gennes CS 10030 Antony, 92163, Cedex, France

Dates of tests: April - May, 2012

Manufacturer: AGCO S.A. BP 307, Avenue Blaise Pascal, 60026 Beauvais, France

FUEL and OIL: Fuel No. 2 Diesel **Specific gravity converted to 60°/60°F (15°/15°C)** 0.837 **Fuel weight** 6.97 lbs/gal (0.835 kg/l) **Diesel Exhaust Fluid (DEF)** 32% aqueous urea solution **DEF weight** 9.10 lbs/gal (1.091 kg/l) **Oil SAE** 15W40 **API service classification** CJ-4 **Transmission and hydraulic lubricant** BP Terrac Tractan 9 15W/40 **Front axle lubricant** BP Terrac Tractan 9 15W/40

ENGINE: Make Sisu AGCO Power Diesel **Type** six cylinder vertical with turbocharger and air to air intercooler and SCR (selective catalyst reduction) exhaust treatment **Serial No.** W00406 **Crankshaft** lengthwise **Rated engine speed** 2100 **Bore and stroke** 4.252" x 4.724" (108.0 mm x 120.0 mm) **Compression ratio** 17.4 to 1 **Displacement** 402 cu in (6596 ml) **Starting system** 12 volt **Lubrication** pressure **Air cleaner** two paper elements **Oil filter** one full flow cartridge **Oil cooler** engine coolant heat exchanger for crankcase oil, radiator for hydraulic and transmission oil **Fuel filter** two paper cartridges **Muffler** vertical **Cooling medium** **temperature control** thermostat and variable speed fan

CHASSIS: **Type** front wheel assist **Serial No.** B 230 901 **Tread width** rear 52.8" (1340 mm) to 87.8" (2230 mm) front 52.8" (1340 mm) to 87.8" (2230 mm) **Wheelbase** 113.2" (2875 mm) **Hydraulic control system** direct engine drive **Transmission** selective gear fixed ratio with partial (4) range operator controlled powershift **Nominal travel speeds mph (km/h)** first 1.24 (2.00) second 1.53 (2.46) third 1.86 (3.00) fourth 2.29 (3.69) fifth 2.95 (4.74) sixth 3.62 (5.83) seventh 4.42 (7.11) eighth 5.43 (8.74) ninth 5.98 (9.62) tenth 7.36 (11.84) eleventh 8.97 (14.44) twelfth 11.04 (17.76) thirteenth 13.79 (22.20) fourteenth 16.96 (27.30) fifteenth 20.69 (33.30) sixteenth 25.46 (40.97) reverse 1.24 (2.00), 1.53 (2.46), 1.86 (3.00), 2.29 (3.69), 2.95 (4.74), 3.62 (5.83), 4.42 (7.11), 5.43 (8.74), 5.98 (9.62), 7.36 (11.84), 8.97 (14.44), 11.04 (17.76), 13.79 (22.20), 16.96 (27.30), 20.69 (33.30), 25.46 (40.97)

DRAWBAR PERFORMANCE
(Unballasted - Front Drive Engaged)
MAXIMUM POWER IN SELECTED GEARS

| Power Hp (kW) | Drawbar pull lbs (kN) | Speed mph (km/h) | Crank- shaft speed rpm | Slip % | Fuel lb/hp.hr (kg/kW.h) | Consumption Hp.hr/gal (kW.h/l) | Temp. °F(°C) cool- ing med | Air dry bulb | Barom. inch Hg (kPa) |
|---------------------|--------------------------------|------------------------|---------------------------------|-----------|-------------------------------|--------------------------------------|-------------------------------------|--------------------|-------------------------------|
| 5th(2A) Gear | | | | | | | | | |
| 87.6 (65.3) | 12295 (54.7) | 2.67 (4.30) | 2118 | 13.5 | 0.529 (0.322) | 13.15 (2.59) | 178 (81) | 55 (13) | 30.1 (102.0) |
| 6th(2B) Gear | | | | | | | | | |
| 103.8 (77.4) | 12005 (53.4) | 3.24 (5.22) | 2064 | 12.2 | 0.478 (0.291) | 14.52 (2.86) | 180 (82) | 57 (14) | 29.8 (101.0) |
| 7th(2C) Gear | | | | | | | | | |
| 112.0 (83.5) | 10705 (47.6) | 3.92 (6.32) | 1998 | 9.2 | 0.459 (0.279) | 15.18 (2.99) | 183 (84) | 57 (14) | 29.8 (101.0) |
| 8th(2D) Gear | | | | | | | | | |
| 116.0 (86.5) | 8755 (38.9) | 4.97 (7.99) | 2003 | 6.0 | 0.445 (0.271) | 15.63 (3.08) | 180 (82) | 57 (14) | 29.8 (101.0) |
| 9th(3A) Gear | | | | | | | | | |
| 118.1 (88.1) | 8070 (35.9) | 5.49 (8.83) | 2001 | 5.2 | 0.444 (0.270) | 15.68 (3.09) | 181 (83) | 59 (15) | 29.8 (101.0) |
| 10th(3B) Gear | | | | | | | | | |
| 118.2 (88.1) | 6430 (28.6) | 6.89 (11.08) | 2005 | 4.5 | 0.446 (0.272) | 15.57 (3.07) | 183 (84) | 59 (15) | 29.8 (101.0) |
| 11th(3C) Gear | | | | | | | | | |
| 116.7 (87.0) | 5150 (22.9) | 8.50 (13.68) | 2002 | 3.5 | 0.449 (0.273) | 15.48 (3.05) | 183 (84) | 57 (14) | 29.8 (101.0) |
| 12th(3D) Gear | | | | | | | | | |
| 113.3 (84.5) | 4100 (18.3) | 10.36 (16.67) | 1990 | 3.0 | 0.464 (0.282) | 14.97 (2.95) | 183 (84) | 59 (15) | 29.8 (101.0) |

Clutch multiple wet disc operated by foot pedal
Brakes multiple wet disc hydraulically operated by two foot pedals that can be locked together
Steering hydrostatic **Power take-off** 540 rpm at 1885 engine rpm or 1000 rpm at 2030 engine rpm
Unladen tractor mass 13920 lb (6315 kg)

REPAIRS AND ADJUSTMENTS: No repairs or adjustments

REMARKS: All test results were determined from observed data obtained in accordance with official OECD test procedures. This tractor did not meet the manufacturer's remote hydraulic flow claims of 29 GPM (110 lpm) with two outlets combined, 24.3 GPM (92 lpm) single outlet set nor 3 point lift capacity of 9800 lbs (4445 kg). The performance figures on this summary were taken from a test conducted under the OECD Code 2 test procedure.

We, the undersigned, certify that this is a true summary of data from OECD Report No. **2753**, Nebraska Summary 899, January 22, 2014.

Roger M. Hoy
 Director

M.F. Kocher
 J.D. Luck
 P.J. Jasa
 Board of Tractor Test Engineers

| TRACTOR SOUND LEVEL WITH CAB | Front wheel drive | |
|------------------------------|-------------------|---------------------|
| | Engaged dB(A) | Disengaged dB(A) |
| At no load in 7th (2C) gear | 69.0 | 69.0 |
| Bystander | | -- |

TIRES, BALLAST AND WEIGHT

Rear Tires - No., size, ply & psi(kPa)
Front Tires - No., size, ply & psi(kPa)
Height of Drawbar
Static Weight with operator - Rear
 - Front
 - Total

Tested without ballast

Two 520/85R38; **; 14(100)
 Two 420/85R28; **; 15(105)
 19.7 in (500 mm)
 7780 lb (3530 kg)
 6305 lb (2860 kg)
 14085 lb (6390 kg)

HYDRAULIC PERFORMANCE

CATEGORY: II

Quick Attach: None

OECD Static test

Maximum force exerted through whole range: 9305 lbs (41.4 kN)

i) Sustained pressure of the open relief valve: 2780 psi (191 bar)

two outlet sets combined

ii) Pump delivery rate at minimum pressure: 25.1 GPM (94.9 l/min)

iii) Pump delivery rate at maximum

hydraulic power: 23.4 GPM (88.9 l/min)

Delivery pressure: 2170 psi (149 bar)

Power: 29.6 HP (22.1 kW)

single outlet set

ii) Pump delivery rate at minimum pressure: 23.1 GPM (87.6 l/min)

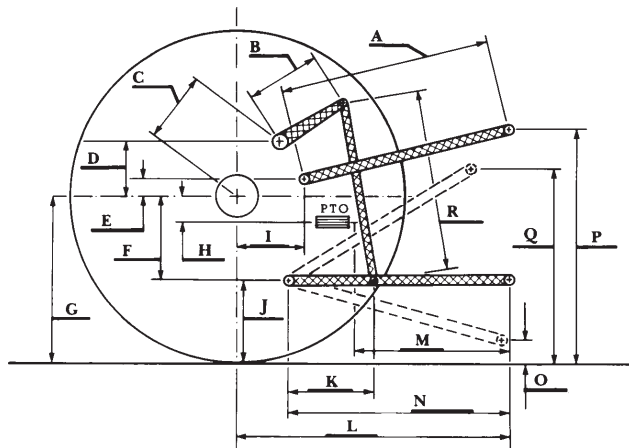
iii) Pump delivery rate at maximum

hydraulic power: 22.1 GPM (83.6 l/min)

Delivery pressure: 1835 psi (126 bar)

Power: 23.6 HP (17.6 kW)

HITCH DIMENSIONS AS TESTED—NO LOAD



| | inch | mm |
|---|------|------|
| A | 27.7 | 704 |
| B | 11.6 | 295 |
| C | 13.9 | 354 |
| D | 13.0 | 330 |
| E | 9.8 | 250 |
| F | 11.0 | 280 |
| G | 34.4 | 875 |
| H | 3.2 | 82 |
| I | 16.3 | 413 |
| J | 23.4 | 595 |
| K | 21.4 | 543 |
| L | 43.3 | 1101 |
| M | 24.6 | 626 |
| N | 37.0 | 940 |
| O | 8.3 | 212 |
| P | 47.4 | 1205 |
| Q | 36.6 | 930 |
| R | 30.7 | 780 |