

NEBRASKA OECD TRACTOR TEST 2000—SUMMARY 783

JOHN DEERE 8360RT DIESEL

INFINITELY VARIABLE TRANSMISSION

POWER TAKE-OFF PERFORMANCE

| Power HP (kW) | Crank shaft speed rpm | Gal/hr (l/h) | lb/hp.hr (kg/kW.h) | Hp.hr/gal (kW.h/l) | Mean Atmospheric Conditions |
|--|--------------------------------|------------------|-----------------------|-----------------------|--------------------------------|
| MAXIMUM POWER AND FUEL CONSUMPTION | | | | | |
| Rated Engine Speed—(PTO speed—1050 rpm) | | | | | |
| 305.42 (227.75) | 2100 | 17.20 (65.11) | 0.394 (0.240) | 17.76 (3.50) | |
| Standard Power Take-off Speed(1001 rpm) | | | | | |
| 330.90 (246.75) | 2000 | 18.29 (69.22) | 0.387 (0.235) | 18.10 (3.56) | |
| Maximum Power (1 hour) | | | | | |
| 339.86 (253.44) | 1800 | 18.74 (70.95) | 0.386 (0.235) | 18.13 (3.57) | |

VARYING POWER AND FUEL CONSUMPTION

| | | | | | |
|--------------------|------|------------------|------------------|-----------------|---------------------|
| 305.42 (227.75) | 2100 | 17.20 (65.11) | 0.394 (0.240) | 17.76 (3.50) | Air temperature |
| 266.58 (198.79) | 2154 | 15.27 (57.82) | 0.401 (0.244) | 17.45 (3.44) | 76°F (25°C) |
| 200.66 (149.63) | 2165 | 12.23 (46.31) | 0.427 (0.260) | 16.40 (3.23) | Relative humidity |
| 134.08 (99.98) | 2175 | 9.29 (35.17) | 0.485 (0.295) | 14.43 (2.84) | 39% |
| 67.70 (50.48) | 2185 | 6.49 (24.58) | 0.672 (0.409) | 10.43 (2.05) | Barometer |
| 5.43 (4.05) | 2195 | 4.66 (17.63) | 6.005 (3.653) | 1.17 (0.23) | 29.08" Hg(98.47kPa) |

Maximum torque - 1091 lb.-ft. (1479 Nm) at 1600 rpm

Maximum torque rise - 42.8%

Torque rise at 1700 engine rpm - 36%

Power increase at 1800 rpm - 11.3%

DRAWBAR PERFORMANCE (Unballasted)

FUEL CONSUMPTION CHARACTERISTICS

| Power Hp (kW) | Drawbar pull lbs (kN) | Speed mph (km/h) | Crank- shaft speed rpm | Slip % | Fuel Consumption lb/hp.hr (kg/kW.h) | Hp.hr/gal (kW.h/l) | Temp.°F (°C) cool- ing med | Air dry bulb | Barom. inch Hg (kPa) |
|--|--------------------------------|------------------------|---------------------------------|-----------|---|-----------------------|-------------------------------------|--------------------|-------------------------------|
| Maximum Power—4.7 mph (7.6 km/h) | | | | | | | | | |
| 256.60 (191.34) | 21827 (97.09) | 4.41 (7.10) | 2100 | 3.6 | 0.472 (0.287) | 14.83 (2.92) | 216 (102) | 71 (22) | 28.93 (97.96) |
| 75% of Pull at Maximum Power—4.7 mph (7.6 km/h) | | | | | | | | | |
| 201.52 (150.27) | 16362 (72.78) | 4.62 (7.44) | 2158 | 1.7 | 0.494 (0.300) | 14.18 (2.79) | 210 (99) | 70 (21) | 28.91 (97.90) |
| 50% of Pull at Maximum Power—4.7 mph (7.6 km/h) | | | | | | | | | |
| 136.46 (101.75) | 10917 (48.56) | 4.69 (7.54) | 2170 | 0.8 | 0.560 (0.341) | 12.51 (2.46) | 199 (93) | 69 (21) | 28.91 (97.90) |
| 75% of Pull at Reduced Engine Speed—Auto mode | | | | | | | | | |
| 201.29 (150.10) | 16385 (72.88) | 4.61 (7.41) | 1760 | 1.6 | 0.463 (0.282) | 15.13 (2.98) | 212 (100) | 70 (21) | 28.91 (97.90) |
| 50% of Pull at Reduced Engine Speed—Auto mode | | | | | | | | | |
| 135.66 (101.16) | 10953 (48.72) | 4.65 (7.48) | 1416 | 0.8 | 0.474 (0.288) | 14.78 (2.91) | 205 (96) | 69 (21) | 28.90 (97.87) |

Location of tests: Nebraska Tractor Test Laboratory, University of Nebraska, Lincoln, Nebraska 68583-0832

Dates of tests: September 8-27, 2011

Manufacturer: John Deere Tractor Works, 3500 East Donald St., P.O. Box 270, Waterloo Ia, 50704-0270

FUEL, OIL and TIME: Fuel No. 2 Diesel Specific gravity converted to 60°/60°F (15°/15°C) 0.8411 Fuel weight 7.003 lbs/gal (0.839 kg/l) Oil SAE 15W-40 API service classification CI-4 Transmission and hydraulic lubricant John Deere Hy-Gard fluid Total time engine was operated: 38.0 hours

ENGINE: Make John Deere Diesel **Type** six cylinder vertical with two turbochargers and air to air aftercooler **Serial No.***RG6090R002447* **Crankshaft** lengthwise **Rated engine speed** 2100 **Bore and stroke** 4.661" x 5.354" (118.4 mm x 136.0 mm) **Compression ratio** 16.0 to 1 **Displacement** 548 cu in (8984 ml) **Starting system** 12 volt **Lubrication** pressure **Air cleaner** two paper elements and aspirator **Oil filter** one full flow cartridge **Oil cooler** engine coolant heat exchanger for crankcase oil, radiator for hydraulic and transmission oil **Fuel filter** one paper element and water separator **Fuel cooler** radiator for pump return fuel **Exhaust** regenerative particulate filter integrated within a vertical muffler **Cooling medium temperature control** 2 thermostats and variable speed fan

ENGINE OPERATING PARAMETERS: Fuel rate: 118.8 - 128.8 lb/h (53.9 - 58.4 kg/h) **High idle:** 2150 - 2250 rpm **Turbo boost:** nominal 33.4 - 36.3 psi (230 - 250 kPa) as measured 34.1 psi (235 kPa)

CHASSIS: Type tracklayer-rubber tracked **Serial No.***1RW8360RABD905504* **Track width** 76.0" (1930 mm) to 120.0" (3048 mm) **Length of track on ground** 99.0" (2515 mm) **Hydraulic control system** direct engine drive **Transmission** Infinitely variable with four mechanical ranges and automatic shifting between ranges. **Nominal travel speeds mph (km/h)** forward - 0 - 26.1 mph, (0 - 42 km/h) reverse - 0 - 11.8 mph (0 - 19 km/h) **Clutch** a foot pedal controls the hydrostatic oil flow **Brakes** wet multiple disc hydraulically actuated by foot pedal **Steering** electro-hydraulic differential steering controlled by steering wheel **Power take-off** 1000 rpm at 2000 engine rpm **Unladen tractor mass** 35605 lb (16150 kg)

DRAWBAR PERFORMANCE

UNBALLASTED - 2100 RPM MAXIMUM POWER AT SELECTED SPEED SETTINGS

| Power Hp (kW) | Drawbar pull lbs (kN) | Speed mph (km/h) | Crank- shaft speed rpm | Slip % | Fuel Consumption lb/hp.hr (kg/kW.h) | Consumption Hp.hr/gal (kW.h/l) | Temp. °F (°C) cool- ing med | Air dry bulb | Barom. inch Hg (kPa) |
|---------------------|--------------------------------|------------------------|---------------------------------|-----------|---|--------------------------------------|--------------------------------------|--------------------|-------------------------------|
| 217.23 (161.98) | 35309 (157.06) | 2.31 (3.72) | 2111 | 13.5 | 2.7 mph (4.4 km/h) 0.555 (0.337) | | 205 (96) | 61 (16) | 29.08 (98.48) |
| 232.64 (173.48) | 32108 (142.82) | 2.72 (4.37) | 2100 | 9.9 | 3.1 mph (5.0 km/h) 0.523 (0.318) | | 214 (101) | 64 (18) | 28.93 (97.97) |
| 240.83 (179.58) | 28970 (128.86) | 3.12 (5.02) | 2100 | 7.5 | 3.5 mph (5.6 km/h) 0.505 (0.307) | | 211 (99) | 67 (19) | 28.95 (98.04) |
| 247.00 (184.18) | 26285 (116.92) | 3.53 (5.67) | 2100 | 5.6 | 3.9 mph (6.2 km/h) 0.492 (0.299) | | 216 (102) | 66 (19) | 28.94 (98.00) |
| 253.45 (188.99) | 23538 (104.70) | 4.04 (6.49) | 2100 | 4.2 | 4.3 mph (7.0 km/h) 0.479 (0.292) | | 215 (101) | 68 (20) | 28.94 (98.00) |
| 256.60 (191.34) | 21827 (97.09) | 4.41 (7.10) | 2100 | 3.6 | 4.7 mph (7.6 km/h) 0.472 (0.287) | | 216 (102) | 71 (22) | 28.93 (97.97) |
| 256.07 (190.95) | 20046 (89.17) | 4.79 (7.71) | 2100 | 2.9 | 5.1 mph (8.2 km/h) 0.473 (0.288) | | 216 (102) | 72 (22) | 28.92 (97.93) |
| 257.17 (191.77) | 18218 (81.04) | 5.30 (8.52) | 2099 | 2.3 | 5.6 mph (9.0 km/h) 0.470 (0.286) | | 215 (102) | 70 (21) | 28.91 (97.90) |
| 256.08 (190.96) | 16229 (72.19) | 5.92 (9.53) | 2100 | 1.8 | 6.2 mph (10.0 km/h) 0.472 (0.287) | | 213 (100) | 61 (16) | 29.09 (98.51) |
| 252.06 (187.96) | 14479 (64.40) | 6.53 (10.50) | 2099 | 1.4 | 6.8 mph (11.0 km/h) 0.482 (0.293) | | 214 (101) | 62 (17) | 29.09 (98.51) |
| 251.99 (187.91) | 13212 (58.77) | 7.15 (11.51) | 2100 | 1.2 | 7.5 mph (12.0 km/h) 0.479 (0.291) | | 215 (102) | 63 (17) | 29.10 (98.54) |
| 247.96 (184.90) | 12005 (53.40) | 7.75 (12.47) | 2100 | 1.0 | 8.1 mph (13.0 km/h) 0.487 (0.297) | | 215 (102) | 61 (16) | 29.10 (98.54) |
| 245.60 (183.14) | 11009 (48.97) | 8.37 (13.46) | 2100 | 0.8 | 8.7 mph (14.0 km/h) 0.490 (0.298) | | 214 (101) | 62 (16) | 29.09 (98.51) |

TRACTOR SOUND LEVEL WITH CAB dB(A)

| | |
|--|------|
| At no load at 4.6 mph (7.5 km/h) engine speed - 2220 rpm | 72.1 |
| At no load at 4.6 mph (7.5 km/h) engine speed - 1200 rpm | 65.9 |
| Transport speed - no load | 73.3 |
| Bystander | 83.7 |

TIRES, BALLAST AND WEIGHT

| | With Ballast | Without Ballast |
|-----------------------------|---------------------|---------------------|
| Track width | 25.0 in (635 mm) | 25.0 in (635 mm) |
| Ballast - Cast iron (front) | 2550 lb (1156 kg) | None |
| - Cast iron (front frame) | 1000 lb (454 kg) | None |
| Height of Drawbar | 19.0 in (485 mm) | 18.0 in (455 mm) |
| Static Weight with operator | 39330 lb (17840 kg) | 35780 lb (16230 kg) |

REPAIRS AND ADJUSTMENTS: No repairs of adjustments.

NOTE 1: During testing the engine was operated for 38.0 hours. During this period, the tractor experienced one active exhaust filter cleaning while operated in Auto Filter Cleaning Mode. This occurred after 22.4 hours of operation.

NOTE 2: The manufacturer declared that the active exhaust filter cleanings consume an average of 0.04 gal/hr (0.15 l/hr) across total tractor use. Fuel consumed during the active exhaust filter cleanings will normally be less than 1% of the total fuel consumed. The manufacturer declared that no active exhaust filter cleanings occurred during 12 hours of continuous operation of the tractor in the Auto Filter Cleaning Mode at 30% loading and the engine speed at which the maximum torque occurs.

REMARKS: All test results were determined from observed data obtained in accordance with official OECD, SAE and Nebraska test procedures. For the maximum power tests the fuel temperature at the injection pump inlet was maintained at 107°F (41°C). This tractor did not meet the manufacturer's initial claims of 45% torque rise nor 12% power bulge. The performance figures on this summary were taken from a test conducted under the OECD Code 2 test procedure.

We, the undersigned, certify that this is a true and correct report of official Tractor Test No. **2000**, Nebraska Summary 783, December 14, 2011.

Roger M. Hoy
Director

M.F. Kocher
D.R. Keshwani
P.J. Jasa
Board of Tractor Test Engineers

DRAWBAR PERFORMANCE
UNBALLASTED - 1800 RPM
MAXIMUM POWER AT SELECTED SPEED SETTINGS

| Power Hp (kW) | Drawbar pull lbs (kN) | Speed mph (km/h) | Crank- shaft speed rpm | Slip % | Fuel Consumption lb/hp.hr (kg/kW.h) | Temp. °F(°C) cool- ing med | Temp. °F(°C) Air dry bulb | Barom. inch Hg (kPa) | |
|---------------------|--------------------------------|------------------------|---------------------------------|-----------|---|-------------------------------------|------------------------------------|-------------------------------|------------------|
| 218.44 (162.89) | 35495 (157.89) | 2.31 (3.72) | 2105 | 13.3 | 2.7 mph (4.4 km/h) 0.555 (0.337) | 12.62 (2.49) | 202 (94) | 61 (16) | 29.08 (98.48) |
| 233.81 (174.35) | 32584 (144.94) | 2.69 (4.33) | 2089 | 10.3 | 3.1 mph (5.0 km/h) 0.524 (0.319) | 13.36 (2.63) | 214 (101) | 64 (18) | 28.94 (98.00) |
| 246.08 (183.50) | 31200 (138.78) | 2.96 (4.76) | 2042 | 9.8 | 3.5 mph (5.6 km/h) 0.515 (0.313) | 13.59 (2.68) | 216 (102) | 67 (19) | 28.95 (98.04) |
| 259.76 (193.70) | 30691 (136.52) | 3.17 (5.10) | 1960 | 8.9 | 3.9 mph (6.2 km/h) 0.501 (0.305) | 13.97 (2.75) | 216 (102) | 68 (20) | 28.94 (98.00) |
| 271.31 (202.31) | 29304 (130.35) | 3.47 (5.58) | 1832 | 7.4 | 4.3 mph (7.0 km/h) 0.489 (0.297) | 14.33 (2.82) | 215 (102) | 68 (20) | 28.94 (98.00) |
| 274.50 (204.69) | 28233 (125.59) | 3.65 (5.87) | 1801 | 7.1 | 4.7 mph (7.6 km/h) 0.482 (0.293) | 14.53 (2.86) | 216 (102) | 71 (22) | 28.92 (97.93) |
| 278.62 (207.77) | 26094 (116.07) | 4.01 (6.45) | 1800 | 5.4 | 5.1 mph (8.2 km/h) 0.476 (0.290) | 14.70 (2.90) | 216 (102) | 71 (22) | 28.92 (97.93) |
| 281.63 (210.01) | 23759 (105.69) | 4.45 (7.15) | 1803 | 4.3 | 5.6 mph (9.0 km/h) 0.471 (0.287) | 14.87 (2.93) | 215 (102) | 70 (21) | 28.92 (97.93) |
| 284.99 (212.52) | 21385 (95.13) | 5.00 (8.05) | 1797 | 3.2 | 6.2 mph (10.0 km/h) 0.463 (0.281) | 15.14 (2.98) | 214 (101) | 61 (16) | 29.10 (98.54) |
| 284.05 (211.82) | 19258 (85.66) | 5.53 (8.90) | 1800 | 2.5 | 6.8 mph (11.0 km/h) 0.463 (0.282) | 15.12 (2.98) | 215 (101) | 62 (17) | 29.11 (98.58) |
| 285.24 (212.70) | 17611 (78.34) | 6.08 (9.78) | 1800 | 2.0 | 7.5 mph (12.0 km/h) 0.465 (0.283) | 15.05 (2.96) | 216 (102) | 63 (17) | 29.10 (98.54) |
| 283.10 (211.11) | 16098 (71.61) | 6.59 (10.61) | 1802 | 1.6 | 8.1 mph (13.0 km/h) 0.470 (0.286) | 14.91 (2.94) | 215 (102) | 61 (16) | 29.10 (98.54) |
| 282.54 (210.69) | 14857 (66.08) | 7.14 (11.48) | 1797 | 1.4 | 8.7 mph (14.0 km/h) 0.469 (0.285) | 14.94 (2.94) | 215 (101) | 61 (16) | 29.09 (98.51) |
| 278.71 (207.83) | 13681 (60.86) | 7.64 (12.29) | 1799 | 1.2 | 9.3 mph (15.0 km/h) 0.473 (0.288) | 14.79 (2.91) | 215 (102) | 62 (16) | 29.09 (98.51) |
| 277.18 (206.69) | 12736 (56.65) | 8.16 (13.13) | 1804 | 1.1 | 9.9 mph (16.0 km/h) 0.472 (0.287) | 14.82 (2.92) | 215 (102) | 63 (17) | 29.08 (98.48) |

DRAWBAR PERFORMANCE
UNBALLASTED - AUTO MODE
MAXIMUM POWER AT SELECTED SPEED SETTINGS

| Power Hp (kW) | Drawbar pull lbs (kN) | Speed mph (km/h) | Crank- shaft speed rpm | Slip % | Fuel Consumption lb/hp.hr (kg/kW.h) | Temp.°F cool- ing med | Temp.°C Air dry bulb | Barom. inch Hg (kPa) | |
|---------------------|--------------------------------|------------------------|---------------------------------|-----------|---|--------------------------------|-------------------------------|-------------------------------|------------------|
| 215.50 (160.69) | 34429 (153.15) | 2.35 (3.78) | 1978 | 13.6 | 0.536 (0.326) | 13.06 (2.57) | 212 (100) | 62 (16) | 29.08 (98.48) |
| 236.59 (176.42) | 32209 (143.27) | 2.76 (4.43) | 1997 | 10.6 | 0.514 (0.313) | 13.62 (2.68) | 214 (101) | 65 (19) | 28.95 (98.04) |
| 256.11 (190.98) | 31301 (139.23) | 3.07 (4.94) | 1971 | 9.8 | 0.507 (0.308) | 13.82 (2.72) | 216 (102) | 66 (19) | 28.94 (98.00) |
| 261.39 (194.91) | 30530 (135.80) | 3.21 (5.17) | 1943 | 8.9 | 0.500 (0.304) | 14.02 (2.76) | 216 (102) | 67 (20) | 28.95 (98.04) |
| 265.65 (198.10) | 29329 (130.46) | 3.40 (5.47) | 1943 | 7.6 | 0.488 (0.297) | 14.35 (2.83) | 216 (102) | 70 (21) | 28.93 (97.97) |
| 267.58 (199.53) | 28309 (125.92) | 3.55 (5.71) | 1944 | 7.2 | 0.487 (0.297) | 14.37 (2.83) | 216 (102) | 71 (22) | 28.92 (97.93) |
| 275.46 (205.41) | 26022 (115.75) | 3.97 (6.39) | 1937 | 5.4 | 0.475 (0.289) | 14.75 (2.91) | 216 (102) | 70 (21) | 28.92 (97.93) |
| 277.61 (207.01) | 23742 (105.61) | 4.39 (7.06) | 1942 | 4.3 | 0.470 (0.286) | 14.90 (2.94) | 216 (102) | 71 (21) | 28.91 (97.90) |
| 279.80 (208.65) | 21397 (95.18) | 4.90 (7.89) | 1945 | 3.3 | 0.465 (0.283) | 15.07 (2.97) | 214 (101) | 62 (17) | 29.09 (98.51) |
| 280.14 (208.90) | 19210 (85.45) | 5.47 (8.80) | 1944 | 2.5 | 0.460 (0.280) | 15.21 (3.00) | 214 (101) | 62 (17) | 29.11 (98.58) |
| 281.86 (210.18) | 17587 (78.23) | 6.01 (9.67) | 1944 | 2.0 | 0.462 (0.281) | 15.16 (2.99) | 215 (102) | 61 (16) | 29.10 (98.55) |
| 278.38 (207.58) | 16118 (71.70) | 6.48 (10.42) | 1944 | 1.7 | 0.465 (0.283) | 15.07 (2.97) | 215 (102) | 60 (16) | 29.10 (98.55) |
| 277.49 (206.92) | 14796 (65.81) | 7.04 (11.32) | 1944 | 1.4 | 0.471 (0.287) | 14.86 (2.93) | 215 (102) | 62 (17) | 29.09 (98.51) |
| 276.35 (206.07) | 13657 (60.75) | 7.59 (12.21) | 1944 | 1.2 | 0.469 (0.285) | 14.93 (2.94) | 215 (102) | 62 (17) | 29.09 (98.51) |
| 273.30 (203.80) | 12699 (56.49) | 8.07 (12.99) | 1943 | 1.1 | 0.473 (0.287) | 14.82 (2.92) | 214 (101) | 62 (17) | 29.09 (98.51) |

DRAWBAR PERFORMANCE
BALLASTED - 1800 RPM
MAXIMUM POWER AT SELECTED SPEED SETTINGS

| Power Hp (kW) | Drawbar pull lbs (kN) | Speed mph (km/h) | Crank- shaft speed rpm | Slip % | Fuel Consumption lb/hp.hr (kg/kW.h) | Fuel Consumption Hp.hr/gal (kW.h/l) | Temp. °F(°C) cool- ing med | Air dry bulb | Barom. inch Hg (kPa) |
|---------------------|--------------------------------|------------------------|---------------------------------|-----------|---|---|-------------------------------------|--------------------|-------------------------------|
| 205.42 (153.18) | 40243 (179.01) | 1.91 (3.07) | 2137 | 13.5 | 2.2 mph (3.6 km/h) 0.572 (0.348) | 12.24 (2.41) | 195 (91) | 47 (9) | 29.04 (98.34) |
| 233.57 (174.17) | 37898 (168.58) | 2.31 (3.72) | 2075 | 12.0 | 2.7 mph (4.4 km/h) 0.528 (0.321) | 13.25 (2.61) | 208 (98) | 51 (10) | 29.05 (98.37) |
| 251.42 (187.48) | 36049 (160.35) | 2.62 (4.21) | 2026 | 10.3 | 3.1 mph (5.0 km/h) 0.509 (0.309) | 13.77 (2.71) | 212 (100) | 53 (11) | 29.05 (98.37) |
| 263.11 (196.20) | 34470 (153.33) | 2.86 (4.60) | 1958 | 9.1 | 3.5 mph (5.6 km/h) 0.493 (0.300) | 14.20 (2.80) | 213 (100) | 54 (12) | 29.05 (98.37) |
| 270.10 (201.41) | 33204 (147.70) | 3.05 (4.91) | 1871 | 8.4 | 3.9 mph (6.2 km/h) 0.485 (0.295) | 14.44 (2.84) | 213 (101) | 56 (13) | 29.05 (98.37) |
| 277.18 (206.69) | 30881 (137.36) | 3.37 (5.42) | 1800 | 7.0 | 4.3 mph (7.0 km/h) 0.476 (0.290) | 14.70 (2.90) | 214 (101) | 57 (14) | 29.05 (98.37) |
| 283.36 (211.30) | 28695 (127.64) | 3.70 (5.95) | 1803 | 5.8 | 4.7 mph (7.6 km/h) 0.465 (0.283) | 15.05 (2.96) | 214 (101) | 59 (15) | 29.05 (98.37) |
| 285.38 (212.80) | 26480 (117.79) | 4.05 (6.51) | 1800 | 4.7 | 5.1 mph (8.2 km/h) 0.463 (0.282) | 15.12 (2.98) | 215 (102) | 59 (15) | 29.06 (98.41) |
| 288.58 (215.19) | 24133 (107.35) | 4.49 (7.22) | 1797 | 3.7 | 5.6 mph (9.0 km/h) 0.457 (0.278) | 15.33 (3.02) | 215 (101) | 59 (15) | 29.06 (97.41) |
| 288.75 (215.32) | 21539 (95.81) | 5.03 (8.09) | 1802 | 2.8 | 6.2 mph (10.0 km/h) 0.457 (0.278) | 15.32 (3.02) | 215 (102) | 61 (16) | 29.06 (97.41) |
| 288.35 (215.02) | 19462 (86.57) | 5.56 (8.94) | 1801 | 2.3 | 6.8 mph (11.0 km/h) 0.458 (0.279) | 15.28 (3.01) | 215 (102) | 62 (16) | 29.05 (97.37) |
| 287.10 (214.09) | 17685 (78.66) | 6.09 (9.80) | 1799 | 2.0 | 7.5 mph (12.0 km/h) 0.458 (0.279) | 15.28 (3.01) | 215 (102) | 63 (17) | 29.04 (97.34) |
| 284.66 (212.27) | 16181 (71.97) | 6.60 (10.61) | 1799 | 1.7 | 8.1 mph (13.0 km/h) 0.460 (0.280) | 15.21 (3.00) | 215 (102) | 62 (17) | 29.05 (98.37) |
| 283.65 (211.51) | 14940 (66.46) | 7.12 (11.46) | 1800 | 1.5 | 8.7 mph (14.0 km/h) 0.463 (0.282) | 15.12 (2.98) | 215 (101) | 63 (17) | 29.04 (98.34) |
| 281.03 (209.56) | 13774 (61.27) | 7.65 (12.31) | 1799 | 1.4 | 9.3 mph (15.0 km/h) 0.467 (0.284) | 15.01 (2.96) | 216 (102) | 63 (17) | 29.04 (98.34) |
| 280.34 (209.05) | 12855 (57.18) | 8.18 (13.16) | 1800 | 1.3 | 9.9 mph (16.0 km/h) 0.469 (0.285) | 14.94 (2.94) | 216 (102) | 63 (17) | 29.04 (98.34) |

HYDRAULIC PERFORMANCE

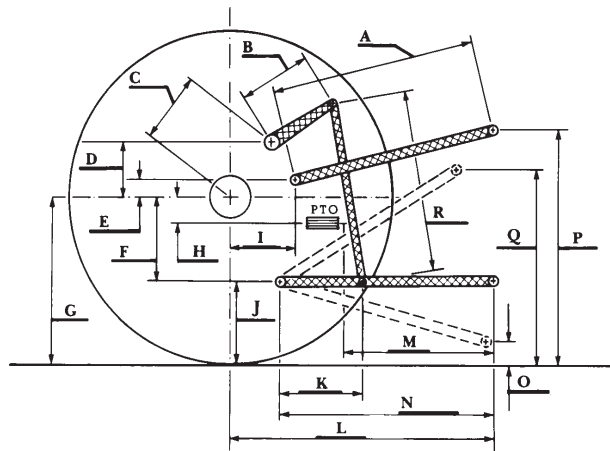
CATEGORY: IVN

Quick Attach: yes

OECD Static test

| Maximum force exerted through whole range: | 21167 lbs (94.2 kN) | |
|--|----------------------------|------------------------|
| | 63 cc pump | 85 cc pump |
| i) Sustained pressure at compensator cutoff: | 2959 psi (204 bar) | 2894 psi (199 bar) |
| | three outlet sets combined | |
| ii) Pump delivery rate at minimum pressure and rated engine speed: | 48.7 GPM (184.4 l/min) | 65.0 GPM (246.1 l/min) |
| iii) Pump delivery rate at maximum hydraulic power: | 48.6 GPM (184.0 l/min) | 64.8 GPM (245.2 l/min) |
| Delivery pressure: | 2652 psi (183 bar) | 2417 psi (167 bar) |
| Power: | 75.2 HP (56.1 kW) | 91.3 HP (68.1 kW) |
| | single outlet set | |
| ii) Pump delivery rate at minimum pressure and rated engine speed: | 38.8 GPM (146.9 l/min) | 39.0 GPM (147.6 l/min) |
| iii) Pump delivery rate at maximum hydraulic power: | 37.4 GPM (141.5 l/min) | 39.5 GPM (149.7 l/min) |
| Delivery pressure: | 2289 psi (158 bar) | 2044 psi (141 bar) |
| Power: | 49.9 HP (37.2 kW) | 47.1 HP (35.2 kW) |

HITCH DIMENSIONS AS TESTED - NO LOAD



| | inch | mm |
|-----|------|------|
| A | 28.1 | 715 |
| B | 20.5 | 520 |
| C | 24.8 | 631 |
| D | 24.2 | 615 |
| E | 15.5 | 394 |
| F | 11.5 | 292 |
| G | 35.0 | 888 |
| H | 3.1 | 80 |
| I | 18.5 | 470 |
| J | 23.5 | 596 |
| K | 39.8 | 1011 |
| L | 53.6 | 1361 |
| *L' | 59.5 | 1511 |
| M | 30.6 | 777 |
| N | 45.7 | 1161 |
| O | 9.0 | 230 |
| P | 50.5 | 1283 |
| Q | 41.1 | 1043 |
| R | 44.7 | 1135 |

*L' to Quick Attach ends



JOHN DEERE 8360RT DIESEL