

# SUMMARY OF OECD TEST 2007—NEBRASKA SUMMARY 387

## JOHN DEERE 6420 AUTOQUAD DIESEL

### 24 SPEED

#### POWER TAKE-OFF PERFORMANCE

Power HP (kW)	Crank shaft speed rpm	Gal/hr (l/h)	lb/hp.hr (kg/kW.h)	Hp.hr/gal (kW.h/l)	Mean Atmospheric Conditions
<b>MAXIMUM POWER AND FUEL CONSUMPTION</b>					
<b>Rated Engine Speed (PTO speed-1043 rpm)</b>					
94.3 (70.3)	2302	5.57 (21.09)	0.408 (0.248)	16.92 (3.33)	
<b>Standard Power Take-off Speed (999 rpm)</b>					
96.0 (71.6)	2205	5.54 (20.99)	0.398 (0.242)	17.32 (3.41)	
<b>Maximum Power (2 hours)</b>					
103.9 (77.5)	1801	5.54 (20.99)	0.368 (0.224)	18.74 (3.69)	

#### VARYING POWER AND FUEL CONSUMPTION

94.3 (70.3)	2302	5.57 (21.09)	0.408 (0.248)	16.92 (3.33)	Air temperature
83.9 (62.6)	2411	5.28 (19.98)	0.433 (0.264)	15.90 (3.13)	74°F (23°C)
63.5 (47.4)	2433	4.46 (16.89)	0.485 (0.295)	14.23 (2.80)	Relative humidity
42.8 (31.9)	2457	3.63 (13.74)	0.585 (0.356)	11.78 (2.32)	18%
21.3 (15.9)	2457	2.73 (10.35)	0.884 (0.538)	7.80 (1.54)	Barometer
--	2458	1.78 (6.73)	--	--	29.67" Hg (100.5 kPa)

Maximum Torque - 326 lb.-ft. (442 Nm) at 1503 rpm  
 Maximum Torque Rise - 51.4%  
 Torque rise at 1800 engine rpm - 41%

#### DRAWBAR PERFORMANCE (Unballasted—Front Drive Engaged) FUEL CONSUMPTION CHARACTERISTICS

Power Hp (kW)	Drawbar pull lbs (kN)	Speed mph (km/h)	Crank- shaft speed rpm	Slip %	Fuel Consumption lb/hp.hr (kg/kW.h)	Hp.hr/gal (kW.h/l)	Temp. °F (°C) cool- ing med	Air dry bulb	Barom. inch Hg (kPa)
<b>Maximum Power—10th (C2) Gear</b>									
75.4 (56.2)	6380 (28.39)	4.43 (7.13)	2303	7.7	0.515 (0.313)	13.59 (2.68)	131 (55)	54 (12)	29.5 (100.0)
<b>75% of Pull at Maximum Power—10th (C2) Gear</b>									
60.7 (45.3)	4805 (21.37)	4.74 (7.63)	2417	5.8	0.566 (0.344)	12.32 (2.43)	135 (57)	54 (12)	29.5 (100.0)
<b>50% of Pull at Maximum Power—10th (C2) Gear</b>									
42.2 (31.5)	3230 (14.37)	4.90 (7.88)	2445	3.8	0.677 (0.412)	10.34 (2.04)	131 (55)	54 (12)	29.5 (100.0)
<b>75% of Pull at Reduced Engine Speed—11th (C3) Gear</b>									
60.6 (45.2)	4810 (21.39)	4.73 (7.62)	2003	4.7	0.501 (0.305)	13.96 (2.75)	124 (51)	54 (12)	29.5 (100.0)
<b>50% of Pull at Reduced Engine Speed—11th (C3) Gear</b>									
42.2 (31.5)	3210 (14.28)	4.93 (7.93)	2053	3.1	0.578 (0.351)	12.10 (2.38)	128 (53)	54 (12)	29.5 (100.0)

**Location of Test:** DLG Testing Station for Agricultural Machinery Max - Eyth - Weg 1, D-64823 Gros-Umstadt, Germany

**Dates of Test:** January - February, 2002

**Manufacturer:** Deere & Company, Moline, Illinois, USA

**FUEL and OIL:** Fuel No. 2 Diesel Specific gravity converted to 60°/60° F (15°/15°C) 0.828 Fuel weight 6.89 lbs/gal (0.826 kg/l) Oil SAE 15W-40 API service classification CF-4 Transmission and hydraulic lubricant John Deere Hy-Gard fluid Front axle lubricant SAE 80W90.

**ENGINE:** Make John Deere Diesel Type four cylinder vertical with turbocharger and intercooler Serial No. 661923 Crankshaft lengthwise Rated engine speed 2300 Bore and stroke 4.19" x 5.00" (106.5 mm x 127.0 mm) Compression ratio 16.9 to 1 Displacement 276 cu in (4525 ml) Starting system 12 volt Lubrication pressure Air cleaner two paper elements Oil filter one full flow cartridge Oil cooler engine coolant heat exchanger for crankcase oil, radiator for hydraulic and transmission oil Fuel filter one paper element Muffler underhood Exhaust vertical Cooling medium temperature control thermostat and variable speed fan

**CHASSIS:** Type front wheel assist Serial No. 322659 Tread width rear 63.1" (1604 mm) to 99.0" (2514 mm) front 59.7" (1516 mm) to 84.1" (2136 mm) Wheel base 94.5" (2400 mm) Hydraulic control system direct engine drive Transmission selective gear fixed ratio with partial (4) range operator controlled powershift Nominal travel speeds mph (km/h) first 0.98 (1.58) second 1.18 (1.90) third 1.41 (2.27) fourth 1.73 (2.79) fifth 2.39 (3.85) sixth 2.88 (4.64) seventh 3.44 (5.55) eighth 3.90 (6.28) ninth 4.23 (6.80) tenth 4.70 (7.56) eleventh 5.62 (9.05) twelfth 6.41 (10.31) thirteenth 6.89 (11.09) fourteenth 7.71 (12.41) fifteenth 9.23 (14.86) sixteenth 10.41 (16.75) seventeenth 11.31 (18.20) eighteenth 12.53 (20.16) nineteenth 14.05 (22.61) twentieth 15.01 (24.15) twenty-first 16.91 (27.22) twenty-second 18.38 (29.58) twenty-third 20.26 (32.60) twenty-fourth 24.81 (39.93) reverse 1.03 (1.65), 1.23 (1.98), 1.47 (2.37), 1.81 (2.91), 2.50 (4.02), 3.01 (4.84), 3.60 (5.80), 4.08 (6.56), 4.41 (7.10), 4.90 (7.89), 5.87 (9.45), 6.69 (10.76), 7.20 (11.58), 8.05 (12.95), 9.64 (15.51), 10.86 (17.48), 11.81 (19.00), 13.08 (21.05), 14.66 (23.60), 15.66 (25.20), 17.65 (28.41), 19.18 (30.87), 21.14 (34.02), 25.90 (41.68) Clutch multiple wet disc hydraulically operated by foot pedal Brakes wet disc hydraulically operated by two foot pedals which can be locked together Steering hydrostatic Power take-off 540 rpm at 2143 engine rpm or 1000 rpm at 2208 engine rpm. Unladen tractor mass 11110 lb (5040 kg)

**DRAWBAR PERFORMANCE**  
**(Unballasted-Front Drive Engaged)**  
**MAXIMUM POWER IN SELECTED GEARS**

Power Hp (kW)	Drawbar pull lbs (kN)	Speed mph (km/h)	Crank- shaft speed rpm	Slip %	Fuel Consumption lb/hp.hr (kg/kW.h)	Consumption Hp.hr/gal (kW.h/l)	Temp.°F(°C) cool- ing med	Air dry bulb	Barom. inch Hg (kPa)
9th (B4) Gear									
77.0 (57.4)	9915 (44.11)	2.91 (4.69)	1839	15.0	0.503 (0.306)	13.91 (2.74)	135 (57)	59 (15)	29.5 (100.0)
10th (C2) Gear									
79.7 (59.4)	9225 (41.03)	3.24 (5.21)	1800	13.3	0.478 (0.291)	14.62 (2.88)	138 (59)	59 (15)	29.5 (100.0)
11th (C3) Gear									
81.3 (60.6)	7565 (33.66)	4.03 (6.48)	1798	10.2	0.468 (0.285)	14.95 (2.95)	144 (62)	59 (15)	29.5 (100.0)
12th (D1) Gear									
81.9 (61.1)	6565 (29.20)	4.68 (7.53)	1796	8.1	0.462 (0.281)	15.12 (2.98)	142 (61)	59 (15)	29.5 (100.0)
13th (C4) Gear									
82.3 (61.4)	6055 (26.94)	5.10 (8.20)	1799	7.1	0.460 (0.280)	15.18 (2.99)	144 (62)	59 (15)	29.5 (100.0)
14th (D2) Gear									
84.7 (63.2)	5525 (24.58)	5.75 (9.26)	1794	6.0	0.449 (0.273)	15.58 (3.07)	142 (61)	59 (15)	29.5 (100.0)
15th (D3) Gear									
83.4 (62.2)	4470 (19.88)	7.00 (11.27)	1800	4.6	0.456 (0.278)	15.32 (3.02)	144 (62)	57 (14)	29.5 (100.0)
16th (E1) Gear									
81.6 (60.9)	3875 (17.24)	7.90 (12.72)	1795	4.5	0.465 (0.283)	15.06 (2.97)	140 (60)	57 (14)	29.5 (100.0)

**REPAIRS AND ADJUSTMENTS:** No repairs or adjustments

**REMARKS:** All test results were determined from observed data obtained in accordance with official OECD test procedures. This tractor did not meet the manufacturer's claims of 5% improved economy when compared to the John Deere 6410 Diesel, nor 3 point lift capacity of 5915 lb (2683 kg). The performance results on this summary were taken from OECD tests conducted under the Code II Test Code procedure.

We, the undersigned, certify that this is a true summary of data from OECD Report No. **2007**, Nebraska Summary 387, January 23, 2003.

Leonard L. Bashford  
 Director

M.F. Kocher  
 V.I. Adamchuk  
 W.P. Campbell  
 Board of Tractor Test Engineers

TRACTOR SOUND LEVEL WITH CAB	Front Wheel Drive	
	Engaged dB(A)	Disengaged dB(A)
At no load in 10th(C2) Gear	71.0	71.0
Maximum Sound level in 10th(C2) gear	73.5	72.5
Bystander	--	--

**TIRES AND WEIGHT**

**Rear Tires**—No., size, ply & psi (kPa)  
**Front Tires**—No., size, ply & psi (kPa)  
**Height of Drawbar**  
**Static Weight with operator**—Rear  
 — Front  
 — Total

**Tested Without Ballast**

Two 18.4-38; 8; 12 (80)  
 Two 16.9-24; 6; 12 (80)  
 20.9 in (530 mm)  
 7210 lb (3270 kg)  
 4065 lb (1845 kg)  
 11275 lb (5115 kg)

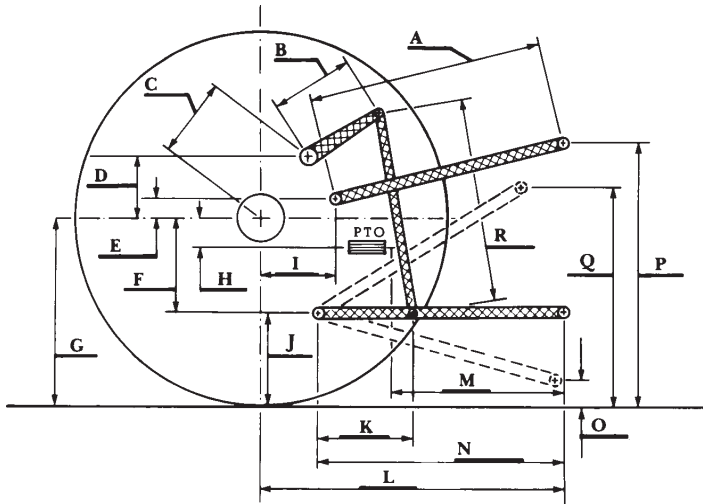
### THREE POINT HITCH PERFORMANCE (OECD Static Test)

CATEGORY: II

Quick Attach: none

Maximum Force Exerted Through Whole Range: 5825 lbs (25.9 kN)

- i) Opening pressure of relief valve: NA
- Sustained pressure of the open relief valve: 2975 psi (205 bar)
- ii) Pump delivery rate at minimum pressure: 31.1 GPM (117.6 l/min)
- iii) Pump delivery rate at maximum
  - hydraulic power: 27.1 GPM (102.4 l/min)
  - Delivery pressure: 2685 psi (185 bar)
  - Power: 42.4 HP (31.6 kW)



HITCH DIMENSIONS AS TESTED—NO LOAD

	inch	mm
A	26.0	660
B	12.0	305
C	20.0	508
D	18.7	475
E	7.3	185
F	8.9	225
G	32.3	820
H	2.8	70
I	18.1	460
J	23.4	595
K	19.8	505
L	42.5	1080
M	21.7	550
N	37.2	945
O	7.9	200
P	47.4	1205
Q	33.5	850
R	32.1	815