

SUMMARY OF OECD TESTS 1852 & 1865-NEBRASKA SUMMARY 301 MASSEY FERGUSON 6255 DIESEL 32 SPEED

POWER TAKE-OFF PERFORMANCE

| Power HP (kW) | Crank shaft speed rpm | Gal/hr (l/h) | lb/hp.hr (kg/kW.h) | Hp.hr/gal (kW.h/l) | Mean Atmospheric Conditions |
|--|--------------------------------|-----------------|-----------------------|-----------------------|--------------------------------|
| MAXIMUM POWER AND FUEL CONSUMPTION | | | | | |
| Rated Engine Speed (PTO speed 1100 rpm) | | | | | |
| 85.3 (63.6) | 2200 | 5.68 (21.50) | 0.473 (0.288) | 15.03 (2.96) | |
| Standard Power Take-off Speed(999 rpm) | | | | | |
| 83.3 (62.1) | 1997 | 5.40 (20.46) | 0.461 (0.281) | 15.40 (3.03) | |
| VARYING POWER AND FUEL CONSUMPTION | | | | | |
| 85.3 (63.6) | 2200 | 5.68 (21.50) | 0.473 (0.288) | 15.03 (2.96) | Air temperature |
| 73.9 (55.1) | 2247 | 5.49 (20.78) | 0.528 (0.321) | 13.45 (2.65) | 70°F (21°C) |
| 55.9 (41.7) | 2276 | 4.59 (17.37) | 0.583 (0.354) | 12.18 (2.40) | Relative humidity |
| 37.1 (27.7) | 2298 | 3.65 (13.81) | 0.697 (0.424) | 10.18 (2.01) | 40% |
| 18.4 (13.7) | 2321 | 2.42 (9.16) | 0.933 (0.567) | 7.59 (1.50) | Barometer |
| -- | 2325 | 1.76 (6.68) | -- | -- | 30.2" Hg (102.3 kPa) |

Maximum Torque - 252.8 lb.-ft. (342.7 Nm) at 1379 rpm
Maximum Torque Rise - 24.3%
Torque rise at 1760 engine rpm - 15%

DRAWBAR PERFORMANCE (Unballasted - Front Drive Engaged)

FUEL CONSUMPTION CHARACTERISTICS

| Power Hp (kW) | Drawbar pull lbs (kN) | Speed mph (km/h) | Crank- shaft speed rpm | Slip % | Fuel Consumption lb/hp.hr (kg/kW.h) | Temp. °F (°C) cool- ing med | Air dry bulb | Barom. inch Hg (kPa) |
|---|--------------------------------|------------------------|---------------------------------|-----------|---|--------------------------------------|--------------------|-------------------------------|
| Maximum Power 19th(ILC) Gear | | | | | | | | |
| 74.2 (55.3) | 4725 (21.0) | 5.89 (9.47) | 2016 | 5 | 0.519 (0.316) | 13.69 (2.70) | 192 (89) | 75 (24) |
| 75% of Pull at Maximum Power 19th(ILC) Gear | | | | | | | | |
| 52.4 (39.1) | 2940 (13.1) | 6.69 (10.76) | 2247 | 3 | 0.666 (0.405) | 10.66 (2.10) | 192 (89) | 79 (26) |
| 50% of Pull at Maximum Power 19th(ILC) Gear | | | | | | | | |
| 35.7 (26.6) | 1975 (8.8) | 6.77 (10.90) | 2264 | 2 | 0.851 (0.518) | 8.34 (1.64) | 191 (88) | 79 (26) |
| 75% of Pull at Reduced Engine Speed 20th(1LD) Gear | | | | | | | | |
| 52.6 (39.2) | 2955 (13.2) | 6.68 (10.76) | 1922 | 3 | 0.583 (0.355) | 12.18 (2.40) | 191 (88) | 79 (26) |
| 50% of Pull at Reduced Engine Speed 20th(1LD) Gear | | | | | | | | |
| 35.3 (26.3) | 1965 (8.7) | 6.73 (10.83) | 1913 | 2 | 0.717 (0.436) | 9.90 (1.95) | 189 (87) | 79 (26) |

Location of Test: Groupement d'Antony, Parc de Touvoie, BP 44 Antony, France 92163

Dates of Test: December 1998 - July 1999

Manufacturer: AGCO S.A. Z.A.-No.2 BP 60307, Avenue Blaise Pascal, 60026 Beauvais, France

FUEL and OIL: Fuel No. 2 Diesel **Specific gravity converted to 60°/60° F (15°/15°C)** 0.853
Fuel weight 7.10 lbs/gal (0.851 kg/l) **Oil SAE** 10W30 **API service classification** CD/CE
Transmission and hydraulic lubricant BP Terrac Extra 10W/30 **Front axle lubricant** API GL5 - SAE 85W140

ENGINE: Make Perkins Diesel **Type** four cylinder vertical with turbocharger **Serial No.** U765993B **Crankshaft** lengthwise **Rated engine speed** 2200 **Bore and stroke** 3.937" x 5.00" (100.0 mm x 127.0 mm) **Compression ratio** 17.3 to 1
Displacement 243 cuin (3990 ml) **Starting system** 12 volt **Lubrication** pressure **Air cleaner** two paper elements **Oil filter** one full flow cartridge **Oil cooler** engine coolant heat exchanger for crankcase oil, radiator for hydraulic and transmission oil **Fuel filter** one paper element **Muffler** underhood **Exhaust** vertical **Cooling medium temperature control** thermostat and variable speed fan

CHASSIS: Type 2WD and FWA **Serial No.** F189054 **Tread width** rear 60.6" (1538 mm) to 84.1" (2136 mm) front -2WD - 54.3" (1380 mm) to 91.7" (2330 mm), FWA - 61.7" (1566 mm) to 80.9" (2054 mm) **Wheelbase** 100.5" (2553 mm) **Hydraulic control system** direct engine drive **Transmission** selective gear fixed ratio with partial (4) range operator controlled powershift **Nominal travel speeds mph (km/h)** first 1.26 (2.03) second 1.48 (2.38) third 1.75 (2.81) fourth 2.04 (3.29) fifth 2.15 (3.46) sixth 2.51 (4.04) seventh 2.83 (4.55) eighth 2.96 (4.77) ninth 3.31 (5.32) tenth 3.47 (5.59) eleventh 3.82 (6.15) twelfth 3.90 (6.28) thirteenth 4.47 (7.20) fourteenth 4.57 (7.35) fifteenth 4.73 (7.62) sixteenth 5.28 (8.50) seventeenth 5.54 (8.92) eighteenth 6.18 (9.95) nineteenth 6.54 (10.53) twentieth 7.66 (12.32) twenty-first 8.05 (12.95) twenty-second 9.42 (15.16) twenty-third 10.59 (17.04) twenty-fourth 11.12 (17.89) twenty-fifth 12.40 (19.95) twenty-sixth 13.01 (20.94) twenty-seventh 14.33 (23.06) twenty-eighth 14.63 (23.55) twenty-ninth 16.77 (26.99) thirtieth 17.13 (27.56) thirty-first 19.80 (31.86) thirty-second 23.17 (37.29) reverse 1.19 (1.91), 1.39 (2.24), 1.64 (2.64), 1.92 (3.09), 2.02 (3.25), 2.37 (3.81), 2.66 (4.28), 2.79 (4.49), 3.11 (5.01), 3.27 (5.26), 3.60 (5.79), 3.67 (5.91), 4.21 (6.78), 4.30 (6.92), 4.46 (7.17), 4.97 (8.00), 5.21 (8.39), 5.82 (9.36), 6.15 (9.90), 7.20 (11.59), 7.57 (12.18), 8.85 (14.25), 9.96 (16.03),

DRAWBAR PERFORMANCE

(Unballasted - Front Drive Engaged) MAXIMUM POWER IN SELECTED GEARS

| Power Hp (kW) | Drawbar pull lbs (kN) | Speed mph (km/h) | Crank- shaft speed rpm | Slip % | Fuel Consumption lb/hp.hr (kg/kW.h) | Consumption Hp.hr/gal (kW.h/l) | Temp.°F(°C) cool- ing med | Air dry bulb | Barom. inch Hg (kPa) |
|---------------------|--------------------------------|------------------------|---------------------------------|-----------|--|--------------------------------------|------------------------------------|--------------------|-------------------------------|
| 8th(2TC)Gear | | | | | | | | | |
| 63.2 (47.1) | 8970 (39.9) | 2.64 (4.25) | 2220 | 15 | 0.639 (0.389) | 11.12 (2.19) | 185 (85) | 75 (24) | 29.6 (100.4) |
| 9th(3TB)Gear | | | | | | | | | |
| 68.4 (51.0) | 8455 (37.6) | 3.03 (4.88) | 2198 | 11 | 0.593 (0.361) | 11.98 (2.36) | 185 (85) | 75 (24) | 29.6 (100.4) |
| 10th(2TD)Gear | | | | | | | | | |
| 68.4 (51.0) | 8060 (35.9) | 3.18 (5.12) | 2191 | 11 | 0.590 (0.359) | 12.03 (2.37) | 192 (89) | 75 (24) | 29.6 (100.4) |
| 11th(4TA)Gear | | | | | | | | | |
| 69.3 (51.7) | 7605 (33.8) | 3.42 (5.50) | 2103 | 10 | 0.566 (0.345) | 12.54 (2.47) | 189 (87) | 75 (24) | 29.6 (100.4) |
| 12th(3TC)Gear | | | | | | | | | |
| 71.6 (53.4) | 7720 (34.3) | 3.48 (5.59) | 2089 | 9 | 0.548 (0.333) | 12.96 (2.55) | 191 (88) | 75 (24) | 29.6 (100.4) |
| 13th(4TB)Gear | | | | | | | | | |
| 70.3 (52.4) | 6520 (29.0) | 4.04 (6.50) | 2080 | 8 | 0.555 (0.338) | 12.79 (2.52) | 187 (86) | 75 (24) | 29.6 (100.4) |
| 14th(3TD)Gear | | | | | | | | | |
| 71.6 (53.4) | 6505 (28.9) | 4.13 (6.64) | 2076 | 8 | 0.547 (0.333) | 12.98 (2.56) | 189 (87) | 75 (24) | 29.6 (100.4) |
| 15th(1LA)Gear | | | | | | | | | |
| 71.6 (53.4) | 6345 (28.2) | 4.23 (6.81) | 2052 | 7 | 0.547 (0.332) | 13.00 (2.56) | 191 (88) | 75 (24) | 29.6 (100.4) |
| 16th(4TC)Gear | | | | | | | | | |
| 71.9 (53.6) | 5760 (25.6) | 4.69 (7.54) | 2014 | 7 | 0.534 (0.325) | 13.30 (2.62) | 191 (88) | 75 (24) | 29.6 (100.4) |
| 17th(1LB)Gear | | | | | | | | | |
| 71.5 (53.3) | 5370 (23.9) | 4.99 (8.03) | 2041 | 6 | 0.547 (0.333) | 12.98 (2.56) | 191 (88) | 75 (24) | 29.6 (100.4) |
| 18th(4TD)Gear | | | | | | | | | |
| 72.4 (54.0) | 4910 (21.9) | 5.53 (8.90) | 2007 | 5 | 0.529 (0.322) | 13.43 (2.65) | 192 (89) | 75 (24) | 29.6 (100.4) |
| 19th(1LC)Gear | | | | | | | | | |
| 74.2 (55.3) | 4720 (21.0) | 5.89 (9.47) | 2016 | 5 | 0.519 (0.316) | 13.68 (2.70) | 192 (89) | 75 (24) | 29.6 (100.4) |
| 20th(1LD)Gear | | | | | | | | | |
| 73.9 (55.1) | 4025 (17.9) | 6.89 (11.08) | 1998 | 4 | 0.512 (0.312) | 13.86 (2.73) | 192 (88) | 75 (24) | 29.6 (100.4) |
| 21st(2LA)Gear | | | | | | | | | |
| 69.9 (52.1) | 3610 (16.1) | 7.26 (11.69) | 1999 | 4 | 0.544 (0.331) | 13.05 (2.57) | 192 (89) | 75 (24) | 29.6 (100.4) |
| 22nd(2LB)Gear | | | | | | | | | |
| 67.2 (50.1) | 3050 (13.6) | 8.26 (13.30) | 1985 | 4 | 0.562 (0.342) | 12.64 (2.49) | 194 (90) | 75 (24) | 29.6 (100.4) |

10.46 (16.83), 11.66 (18.76), 12.24 (19.69), 13.48 (21.69), 13.76 (22.15), 15.78 (25.39), 16.11 (25.92), 18.62 (29.97), 21.80 (35.08) **Clutch** multiple wet disc operated by foot pedal **Brakes** multiple wet disc hydraulically operated by two foot pedals that can be locked together **Steering** hydrostatic **Power take-off** 540 rpm at 1976 engine rpm or 1000 rpm at 2000 engine rpm **Unladen tractor mass** 2WD-9250 lb (4195 kg), FWA-9820 lb (4455 kg)

REPAIRS AND ADJUSTMENTS: No repairs or adjustments

REMARKS: All test results were determined from observed data obtained in accordance with official OECD test procedures. This tractor did not meet the manufacturer's claims of 12987 lbs (5850 kg) lift at link ends nor lift of 7000 lb (3182 kg) at 24" with 2 5/8" (66.7 mm) cylinders. The performance figures on this summary were taken from a test conducted under the OECD Code II test procedure.

We, the undersigned, certify that this is a true summary of data from OECD Reports No. **1852 & 1865**, Nebraska Summary 301, June 21, 2000.

Brent T. Sampson
Test Engineer

L.L. Bashford
M.F. Kocher
R.D. Grisso Jr.
Board of Tractor Test Engineers

| TRACTOR SOUND LEVEL WITH CAB | Front Wheel Drive | |
|-------------------------------|-------------------|------------------|
| | 2WD dB(A) | Engaged dB(A) |
| At no load in 15th (1LA) gear | 74.0 | 75.0 |
| Bystander | -- | -- |

DRAWBAR PERFORMANCE

(Unballasted - 2WD)

FUEL CONSUMPTION CHARACTERISTICS

| Power Hp (kW) | Drawbar pull lbs (kN) | Speed mph (km/h) | Crank- shaft speed rpm | Slip % | Fuel Consumption lb/hp.hr (kg/kW.h) | Fuel Consumption Hp.hr/gal (kW.h/l) | Temp. °F cool- ing med | Temp. °C Air dry bulb | Barom. inch Hg (kPa) |
|---|--------------------------------|------------------------|---------------------------------|-----------|---|---|---------------------------------|--------------------------------|-------------------------------|
| Maximum Power 15th(1LA) Gear | | | | | | | | | |
| 74.0 (55.2) | 6675 (29.7) | 4.16 (6.70) | 2094 | 11 | 0.540 (0.329) | 13.15 (2.59) | 187 (86) | 79 (26) | 29.9 (101.4) |
| 75% of Pull at Maximum Power 15th(1LA) Gear | | | | | | | | | |
| 56.3 (42.0) | 4565 (20.3) | 4.62 (7.44) | 2246 | 7 | 0.613 (0.373) | 11.57 (2.28) | 187 (86) | 81 (27) | 29.9 (101.2) |
| 50% of Pull at Maximum Power 15th(1LA) Gear | | | | | | | | | |
| 38.2 (28.5) | 3005 (13.4) | 4.77 (7.67) | 2273 | 6 | 0.735 (0.447) | 9.66 (1.90) | 185 (85) | 81 (27) | 29.9 (101.2) |
| 75% of Pull at Reduced Engine Speed 17th(1LB) Gear | | | | | | | | | |
| 56.3 (42.0) | 4565 (20.3) | 4.62 (7.43) | 1909 | 7 | 0.526 (0.320) | 13.50 (2.66) | 187 (86) | 81 (27) | 29.9 (101.2) |
| 50% of Pull at Reduced Engine Speed 17th(1LB) Gear | | | | | | | | | |
| 38.2 (28.5) | 2995 (13.3) | 4.78 (7.70) | 1947 | 6 | 0.603 (0.367) | 11.78 (2.32) | 187 (86) | 81 (27) | 29.9 (101.2) |
| MAXIMUM POWER IN SELECTED GEARS | | | | | | | | | |
| 12th(3TC) Gear | | | | | | | | | |
| 66.6 (49.7) | 7215 (32.1) | 3.45 (5.56) | 2215 | 15 | 0.601 (0.366) | 11.81 (2.33) | 190 (88) | 79 (26) | 29.9 (101.4) |
| 13th(4TB) Gear | | | | | | | | | |
| 70.9 (52.9) | 6855 (30.5) | 3.88 (6.25) | 2102 | 13 | 0.560 (0.340) | 12.69 (2.50) | 190 (88) | 79 (26) | 29.9 (101.4) |
| 14th(3TD) Gear | | | | | | | | | |
| 72.4 (54.0) | 6890 (30.6) | 3.94 (6.34) | 2076 | 12 | 0.546 (0.332) | 12.99 (2.56) | 187 (86) | 79 (26) | 29.9 (101.4) |
| 15th(1LA) Gear | | | | | | | | | |
| 74.0 (55.2) | 6675 (29.7) | 4.16 (6.70) | 2094 | 11 | 0.540 (0.329) | 13.15 (2.59) | 187 (86) | 79 (26) | 29.9 (101.4) |
| 16th(4TC) Gear | | | | | | | | | |
| 73.5 (54.8) | 5850 (26.0) | 4.71 (7.58) | 2092 | 10 | 0.547 (0.333) | 13.01 (2.56) | 189 (87) | 79 (26) | 29.9 (101.4) |
| 17th(1LB) Gear | | | | | | | | | |
| 73.8 (55.0) | 5645 (25.1) | 4.90 (7.89) | 2073 | 9 | 0.536 (0.326) | 13.25 (2.61) | 187 (86) | 79 (26) | 29.9 (101.4) |
| 18th(4TD) Gear | | | | | | | | | |
| 73.4 (54.7) | 5030 (22.4) | 5.47 (8.80) | 2054 | 8 | 0.538 (0.327) | 13.20 (2.60) | 187 (86) | 79 (26) | 29.9 (101.4) |
| 19th(1LC) Gear | | | | | | | | | |
| 74.4 (55.5) | 4895 (21.8) | 5.70 (9.18) | 2021 | 8 | 0.522 (0.318) | 13.60 (2.68) | 189 (87) | 79 (26) | 29.9 (101.4) |
| 20th(1LD) Gear | | | | | | | | | |
| 74.0 (55.2) | 4180 (18.6) | 6.64 (10.68) | 1990 | 7 | 0.522 (0.318) | 13.60 (2.68) | 189 (87) | 79 (26) | 29.9 (101.4) |
| 21st(2LA) Gear | | | | | | | | | |
| 73.1 (54.5) | 3895 (17.3) | 7.04 (11.32) | 1998 | 7 | 0.534 (0.325) | 13.30 (2.62) | 190 (88) | 79 (26) | 29.9 (101.4) |
| 22nd(2LB) Gear | | | | | | | | | |
| 73.0 (54.4) | 3300 (14.7) | 8.30 (13.35) | 1996 | 5 | 0.530 (0.322) | 13.40 (2.64) | 190 (88) | 79 (26) | 29.9 (101.4) |

Tested Without Ballast

TIRES AND WEIGHT

Rear tires - No., size, ply & psi (kPa)

Front tires - No., size, ply & psi (kPa)

Height of Drawbar

Static Weight with operator - Rear

- Front

- Total

Front Wheel Assist

Two 16.9R38; **,15(100)

Two 13.6R28; **,16(110)

20.5 in (520 mm)

6050 lb (2745 kg)

3935 lb (1785 kg)

9985 lb (4530 kg)

2WD

Two 16.9R38; **,15(100)

Two 10.00-16; 8; 36(250)

31.5 in (800 mm)

6015 lb (2730 kg)

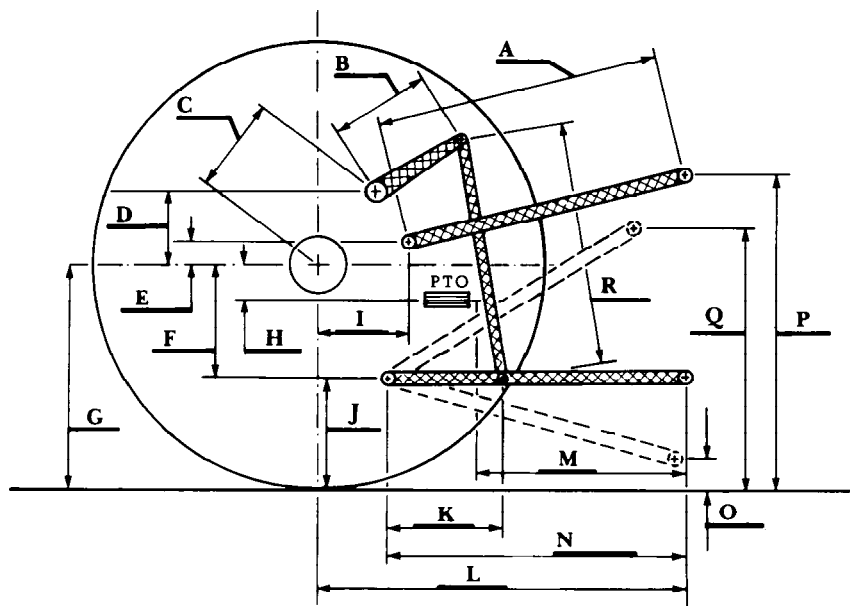
3395 lb (1540 kg)

9415 lb (4270 kg)

THREE POINT HITCH PERFORMANCE (OECD Static Test)

| | | |
|-----------------------|------------------------|---|
| CATEGORY: II | lift cylinder diameter | |
| Quick Attach: None | 66.7 mm | 75 mm |
| Maximum Force Exerted | | |
| Through Whole Range: | 6655 lbs (29.6 kN) | 8475 lbs (37.7 kN) (at the frame) |
| | 8160 lbs (36.3 kN) | 10385 lbs (46.2 kN) (at the hitch points) |

| | open center system | closed center system |
|--|-----------------------|-----------------------|
| i) Opening pressure of relief valve: | NA | NA |
| Sustained pressure of the open relief valve: | 2845 psi (196 bar) | 2845 psi (196 bar) |
| ii) Pump delivery rate at minimum pressure: | 15.6 GPM (59.0 l/min) | 25.3 GPM (95.7 l/min) |
| iii) Pump delivery rate at maximum | | |
| hydraulic power: | 14.1 GPM (53.4 l/min) | 25.0 GPM (94.5 l/min) |
| Delivery pressure: | 2640 psi (182 bar) | 2305 psi (159 bar) |
| Power: | 21.7 HP (16.2 kW) | 33.6 HP (25.0 kW) |



HITCH DIMENSIONS AS TESTED NO LOAD

| | inch | mm |
|---|------|------|
| A | 26.4 | 670 |
| B | 11.6 | 295 |
| C | 13.9 | 354 |
| D | 13.0 | 330 |
| E | 7.9 | 200 |
| F | 11.0 | 280 |
| G | 31.3 | 795 |
| H | 1.7 | 43 |
| I | 15.3 | 389 |
| J | 20.3 | 515 |
| K | 21.4 | 543 |
| L | 43.5 | 1104 |
| M | 24.8 | 629 |
| N | 37.1 | 943 |
| O | 7.3 | 186 |
| P | 44.3 | 1125 |
| Q | 33.7 | 855 |
| R | 28.1 | 715 |