

SUMMARY OF OECD TEST 2935–NEBRASKA SUMMARY 1017

MASSEY FERGUSON 7722 DYNA 6 DIESEL

24 SPEED

POWER TAKE-OFF PERFORMANCE

Power HP (kW)	Crank shaft speed rpm	Diesel Consumption		D.E.F. Consumption		Mean Atmospheric Conditions
		Gal/hr (l/h)	lb/hp.hr (kg/kW.h)	Hp.hr/gal (kW.h/l)	Gal/hr (l/h)	
MAXIMUM POWER AND FUEL CONSUMPTION						
Rated Engine Speed—(PTO speed—1050 rpm)						
176.2 (131.4)	2100	10.63 (40.25)	0.422 (0.256)	16.55 (3.26)	0.69 (2.60)	
Standard Power Take-off Speed (1000 rpm)						
192.0 (143.2)	2000	11.03 (41.76)	0.401 (0.244)	17.41 (3.43)	0.73 (2.78)	
Maximum Power (1 hour)						
201.8 (150.5)	1802	10.92 (41.33)	0.378 (0.230)	18.48 (3.64)	0.81 (3.05)	

VARYING POWER AND FUEL CONSUMPTION

176.2 (131.4)	2100	10.63 (40.25)	0.422 (0.256)	16.55 (3.26)	0.69 (2.60)	Air temperature
151.1 (112.7)	2119	9.30 (35.20)	0.429 (0.261)	16.24 (3.20)	0.59 (2.22)	73°F (23°C)
113.9 (84.9)	2127	7.29 (27.58)	0.446 (0.272)	15.63 (3.08)	0.50 (1.89)	Relative humidity
76.1 (56.7)	2131	5.56 (21.04)	0.510 (0.310)	13.69 (2.70)	0.41 (1.55)	49%
38.1 (28.4)	2140	3.83 (14.50)	0.701 (0.427)	9.95 (1.96)	0.22 (0.82)	Barometer
--	2150	2.29 (8.67)	--	--	--	30.0" Hg (101.7kPa)

Maximum torque - 674.3 lb.-ft. (914.2 Nm) at 1150 rpm
 Maximum torque rise - 53.0%
 Torque rise at 1700 engine rpm - 37%
 Power increase at 1802 engine rpm - 14.5%

DRAWBAR PERFORMANCE (Unballasted - Front Drive Engaged) FUEL CONSUMPTION CHARACTERISTICS

Power Hp (kW)	Drawbar pull lbs (kN)	Speed mph (km/h)	Crank- shaft speed rpm	Slip %	Fuel Consumption lb/hp.hr (kg/kW.h)	Hp.hr/gal (kW.h/l)	Temp.°F (°C) cool- ing med	Air dry bulb	Barom. inch Hg (kPa)
Power at Rated Engine Speed—13th(3B) Gear									
146.3 (109.1)	8995 (40.0)	6.10 (9.82)	2096	3.2	0.509 (0.309)	13.60 (2.68)	187 (86)	45 (7)	30.3 (102.7)
75% of Pull at Rated Engine Speed—13th(3B) Gear									
111.5 (83.2)	6755 (30.0)	6.20 (9.98)	2122	2.7	0.534 (0.324)	12.97 (2.55)	187 (86)	45 (7)	30.3 (102.7)
50% of Pull at Rated Engine Speed—13th(3B) Gear									
76.8 (57.3)	4540 (20.2)	6.35 (10.22)	2131	1.0	0.620 (0.377)	11.17 (2.20)	185 (85)	45 (7)	30.3 (102.7)
75% of Pull at Reduced Engine Speed—15th(3C) Gear									
112.1 (83.6)	6720 (29.9)	6.25 (10.06)	1810	2.6	0.501 (0.305)	13.81 (2.72)	185 (85)	45 (7)	30.3 (102.7)
50% of Pull at Reduced Engine Speed—15th(3C) Gear									
77.1 (57.5)	4540 (20.2)	6.37 (10.25)	1820	1.0	0.526 (0.320)	13.15 (2.59)	183 (84)	45 (7)	30.3 (102.7)

Location of tests: IRSTEA, Centre d'Antony, 1 rue Pierre-Gilles de Gennes CS 10030 Antony, 92163, Cedex, France

Dates of tests: September to November, 2015

Manufacturer: AGCO S.A. BP 307, Avenue Blaise Pascal, 60026 Beauvais, France

CONSUMABLE FLUIDS: Fuel No. 2 Diesel Specific gravity converted to 60°/60°F (15°/15°C) 0.838 Fuel weight 6.98 lbs/gal (0.836 kg/l) Diesel Exhaust Fluid (DEF) 32% aqueous urea solution DEF weight 9.10 lbs/gal (1.091 kg/l) Oil SAE 15W40 API service classification CJ-4 Transmission and hydraulic lubricant BPTerrac Tractan 9 15W/40 Front axle lubricant BPTerrac Tractan 9 15W/40

ENGINE: Make AGCO Power Diesel Type six cylinder vertical with turbocharger, air to air intercooler and SCR (selective catalyst reduction) exhaust treatment Serial No. Z00017 Crankshaft lengthwise Rated engine speed 2100 Bore and stroke 4.252" x 5.276" (108.0 mm x 134.0 mm) Compression ratio 17.8 to 1 Displacement 449 cu in (7365 ml) Starting system 12 volt Lubrication pressure Air cleaner two paper elements Oil filter one full flow cartridge Oil cooler engine coolant heat exchanger for crankcase oil, radiator for hydraulic and transmission oil Fuel filter three paper cartridges Muffler vertical Cooling medium temperature control thermostat and variable speed fan

CHASSIS: Type front wheel assist Serial No. D 245901 Tread width rear 52.8" (1340 mm) to 87.8" (2230 mm) front 52.8" (1340 mm) to 87.8" (2230 mm) Wheelbase 117.0" (2973 mm) Hydraulic control system direct engine drive Transmission selective gear fixed ratio with partial (6) range operator controlled powershift Nominal travel speeds mph (km/h) first 1.01 (1.62) second 1.21 (1.95) third 1.42 (2.29) fourth 1.72 (2.76) fifth 2.01 (3.24) sixth 2.42 (3.90) seventh 2.73 (4.39) eighth 3.27 (5.27) ninth 3.85 (6.19) tenth 4.63 (7.45) eleventh 5.22 (8.40) twelfth 5.44 (8.76) thirteenth 6.28 (10.10) fourteenth 6.55 (10.54) fifteenth 7.37 (11.86) sixteenth 8.87 (14.27) seventeenth 10.43 (16.78) eighteenth 12.54 (20.18) nineteenth 14.49 (23.32) twentieth 17.42 (28.04) twenty-first 20.45 (32.91) twenty-second 24.61 (39.61) twenty-third 24.86 (40.00) twenty-fourth 24.86 (40.00) electronically limited reverse 1.01 (1.62), 1.21 (1.95), 1.42 (2.29), 1.72 (2.76), 2.01 (3.24), 2.42 (3.90), 2.73 (4.39), 3.27 (5.27), 3.85 (6.19), 4.63 (7.45), 5.22 (8.40), 5.44 (8.76), 6.28 (10.10), 6.55 (10.54), 7.37 (11.86), 8.87 (14.27) 10.43 (16.78), 12.54 (20.18), 14.49 (23.32), 17.42 (28.04), 20.45 (32.91), 24.61 (39.61), 24.86 (40.00), 24.86 (40.00) electronically limited

DRAWBAR PERFORMANCE
(Unballasted - Front Drive Engaged)
MAXIMUM POWER IN SELECTED GEARS

Power Hp (kW)	Drawbar pull lbs (kN)	Speed mph (km/h)	Crank- shaft speed rpm	Slip %	Fuel Consumption lb/hp.hr (kg/kW.h)	Consumption Hp.hr/gal (kW.h/l)	Temp. ^{°F} (°C) cool- ing med	Air dry bulb	Barom. inch Hg (kPa)
3rd(1C) Gear									
51.2 (38.2)	15535 (69.1)	1.24 (1.99)	2134	14.8	0.766 (0.466)	9.04 (1.78)	185 (85)	41 (5)	30.3 (102.7)
4th(1D) Gear									
62.1 (46.3)	15285 (68.0)	1.52 (2.45)	2128	13.8	0.688 (0.419)	10.05 (1.98)	185 (85)	43 (6)	30.3 (102.7)
5th(1E) Gear									
71.1 (53.0)	15040 (66.9)	1.77 (2.85)	2127	13.5	0.652 (0.397)	10.61 (2.09)	187 (86)	43 (6)	30.3 (102.7)
6th(1F) Gear									
86.2 (64.3)	15040 (66.9)	2.15 (3.46)	2124	12.8	0.622 (0.378)	11.12 (2.19)	187 (86)	45 (7)	30.3 (102.7)
7th(2A) Gear									
96.2 (71.7)	14320 (63.7)	2.52 (4.05)	2123	8.9	0.552 (0.335)	12.54 (2.47)	187 (86)	45 (7)	30.3 (102.7)
8th(2B) Gear									
118.1 (88.1)	14120 (62.8)	3.13 (5.05)	2118	7.6	0.539 (0.328)	12.84 (2.53)	190 (88)	45 (7)	30.3 (102.7)
9th(2C) Gear									
132.2 (98.6)	14005 (62.3)	3.54 (5.70)	2059	7.2	0.514 (0.312)	13.47 (2.65)	190 (88)	45 (7)	30.3 (102.7)
*10th(2D) Gear									
148.0 (110.4)	13985 (62.2)	3.97 (6.39)	1923	7.1	0.504 (0.306)	13.73 (2.70)	192 (89)	43 (6)	30.3 (102.7)
*11th(3A) Gear									
163.6 (122.0)	13960 (62.1)	4.39 (7.07)	1905	7.0	0.466 (0.283)	14.85 (2.92)	190 (88)	45 (7)	30.3 (102.7)
*12th(2E) Gear									
165.3 (123.3)	13645 (60.7)	4.54 (7.31)	1866	6.8	0.459 (0.279)	15.08 (2.97)	192 (89)	43 (6)	30.3 (102.7)
*13th(3B) Gear									
169.4 (126.3)	12275 (54.6)	5.18 (8.33)	1828	5.8	0.451 (0.274)	15.33 (3.02)	190 (88)	43 (6)	30.3 (102.7)
*14th(2F) Gear									
167.9 (125.2)	11825 (52.6)	5.33 (8.57)	1798	4.8	0.457 (0.278)	15.13 (2.98)	192 (89)	43 (6)	30.3 (102.7)
*15th(3C) Gear									
171.1 (127.6)	10410 (46.3)	6.16 (9.92)	1814	3.6	0.441 (0.268)	15.68 (3.09)	192 (89)	45 (7)	30.3 (102.7)
*16th(3D) Gear									
169.8 (126.6)	8295 (36.9)	7.67 (12.35)	1828	3.0	0.448 (0.272)	15.45 (3.04)	192 (89)	45 (7)	30.3 (102.7)
*17th(3E) Gear									
164.9 (123.0)	7015 (31.2)	8.82 (14.19)	1806	2.1	0.460 (0.280)	15.03 (2.96)	192 (89)	45 (7)	30.3 (102.7)
*18th(3F) Gear									
160.8 (119.9)	5620 (25.0)	10.73 (17.27)	1813	1.3	0.472 (0.287)	14.64 (2.88)	192 (89)	45 (7)	30.3 (102.7)

*Powerboost mode

TRACTOR SOUND LEVEL WITH CAB	Front wheel drive	
	Engaged dB(A)	Disengaged dB(A)
At no load in 10th (2D) gear	70.0	69.0
Bystander		--

TIRES, BALLAST AND WEIGHT

Rear Tires - No., size, ply & psi(kPa)
Front Tires - No., size, ply & psi(kPa)
Height of Drawbar
Static Weight with operator - Rear
- Front
- Total

Tested without ballast
Two 620/70R42;**,15(100)
Two 480/70R30;**,16(110)
21.7 in (550 mm)
10305 lb (4855 kg)
7640 lb (3465 kg)
18345 lb (8320 kg)

Clutch multiple wet disc operated by foot pedal
Brakes multiple wet disc hydraulically operated by two foot pedals that can be locked together
Steering hydrostatic **Power take-off** 540 rpm at 1890 engine rpm or 1000 rpm at 2000 engine rpm **Unladen tractor mass** 18175 lb (8245 kg)

REPAIRS AND ADJUSTMENTS: No repairs or adjustments.

NOTE: This tractor has a power management system that provides an engine power increase when the PTO is engaged and for travel speeds from gear 2D and higher.

REMARKS: All test results were determined from observed data obtained in accordance with official OECD test procedures. The performance figures on this summary were taken from a test conducted under the OECD Code 2 test procedure.

We, the undersigned, certify that this is a true summary of data from OECD Report No. **2935**, Nebraska Summary 1017, June 16, 2016.

Roger M. Hoy
Director

M.F. Kocher
J.D. Luck
P.J. Jasa
Board of Tractor Test Engineers

HYDRAULIC PERFORMANCE

CATEGORY: III

Quick Attach: None

OECD Static test

Maximum force exerted through whole range: 13890 lbs (61.8 kN)

i) Sustained pressure of the open relief valve: 2700 psi (186 bar)

Standard Pump

Optional pump

29 GPM (110 l/min)

39 GPM (150 l/min)

two outlet sets combined

two outlet sets combined

30.7 GPM (116.2 l/min)

42.1 GPM (159.2 l/min)

ii) Pump delivery rate at minimum pressure:

iii) Pump delivery rate at maximum

hydraulic power:

Delivery pressure:

Power:

29.2 GPM (110.5 l/min)

38.6 GPM (146.3 l/min)

1990 psi (137 bar)

1820 psi (126 bar)

33.9 HP (25.2 kW)

41.0 HP (30.6 kW)

single outlet set

single outlet set

ii) Pump delivery rate at minimum pressure:

iii) Pump delivery rate at maximum

hydraulic power:

Delivery pressure:

Power:

28.6 GPM (108.3 l/min)

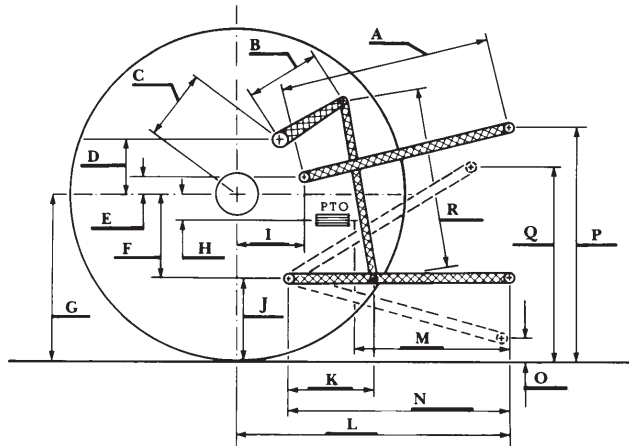
27.0 GPM (102.1 l/min)

1975 psi (136 bar)

1945 psi (134 bar)

32.9 HP (24.5 kW)

30.6 HP (22.8 kW)



HITCH DIMENSIONS AS TESTED—NO LOAD

	inch	mm
A	30.9	784
B	15.7	400
C	20.7	525
D	19.1	485
E	8.3	210
F	12.2	310
G	36.4	925
H	2.0	50
I	17.7	450
J	24.2	615
K	23.8	604
L	48.2	1225
M	24.6	625
N	38.1	967
O	10.0	255
P	51.2	1300
Q	39.7	1009
R	36.6	930