

SUMMARY OF OECD TEST 1779 – NEBRASKA SUMMARY 276

MASSEY FERGUSON 4225 DIESEL

ALSO MASSEY FERGUSON 4325 DIESEL

12 SPEED

POWER TAKE-OFF PERFORMANCE (540 RPM Shaft)

Power HP (kW)	Crank shaft speed rpm	Gal/hr (l/h)	lb/hp.hr (kg/kW.h)	Hp.hr/gal (kW.h/l)	Mean Atmospheric Conditions
MAXIMUM POWER AND FUEL CONSUMPTION					
Rated Engine Speed—(PTO speed—624 rpm)					
54.8 (40.9)	2200	3.81 (14.44)	0.507 (0.309)	14.37 (2.83)	
Maximum Power (2 hours)					
55.4 (41.3)	2100	3.74 (14.15)	0.492 (0.299)	14.82 (2.92)	
Standard Power Take-off Speed (540 rpm)					
53.4 (39.8)	1903	3.44 (13.03)	0.470 (0.286)	15.50 (3.05)	

VARYING POWER AND FUEL CONSUMPTION					
54.8 (40.9)	2200	3.81 (14.44)	0.507 (0.309)	14.37 (2.83)	Air temperature
48.0 (35.8)	2267	3.55 (13.43)	0.539 (0.328)	13.53 (2.66)	68°F (20°C)
36.6 (27.3)	2301	3.14 (11.88)	0.625 (0.380)	11.67 (2.30)	Relative humidity
24.5 (18.3)	2323	2.39 (9.03)	0.708 (0.431)	10.29 (2.03)	36%
12.3 (9.2)	2340	1.74 (6.59)	1.032 (0.628)	7.08 (1.39)	Barometer
--	2347	1.25 (4.74)	--	--	29.9" Hg (101.6 kPa)

Maximum Torque -169.4 lb.-ft. (229.7 Nm) at 1300 rpm
 Maximum Torque Rise -29.4%
 Torque rise at 1800 engine rpm -18%

POWER TAKE-OFF PERFORMANCE (1000 RPM Shaft)

Power HP (kW)	Crank shaft speed rpm	Gal/hr (l/h)	lb/hp.hr (kg/kW.h)	Hp.hr/gal (kW.h/l)	Mean Atmospheric Conditions
MAXIMUM POWER AND FUEL CONSUMPTION					
Rated Engine Speed—(PTO speed—1100 rpm)					
56.1 (41.8)	2200	3.81 (14.42)	0.495 (0.301)	14.72 (2.90)	
Maximum Power (2 hours)					
56.9 (42.4)	2104	3.73 (14.13)	0.478 (0.291)	15.23 (3.00)	
Standard Power Take-off Speed (1000 rpm)					
55.9 (41.7)	2001	3.57 (13.53)	0.466 (0.284)	15.64 (3.08)	

VARYING POWER AND FUEL CONSUMPTION					
56.1 (41.8)	2200	3.81 (14.42)	0.495 (0.301)	14.72 (2.90)	Air temperature
49.1 (36.6)	2267	3.54 (13.41)	0.526 (0.320)	13.86 (2.73)	70°F (21°C)
37.3 (27.8)	2302	3.11 (11.77)	0.607 (0.369)	12.00 (2.37)	Relative humidity
25.1 (18.7)	2321	2.41 (9.14)	0.702 (0.427)	10.38 (2.04)	32%
12.7 (9.5)	2335	1.74 (6.58)	0.995 (0.606)	7.33 (1.44)	Barometer
--	2349	1.27 (4.80)	--	--	30.0" Hg (101.6 kPa)

Maximum Torque -174.7 lb.-ft. (236.9 Nm) at 1303 rpm
 Maximum Torque Rise -30.6%
 Torque rise at 1800 engine rpm -16%

Location of tests: Silsoe Research Institute, Wrest Park, Silsoe Bedford England MK45 4HS

Dates of tests: March to June, 1998

Manufacturer: AGCO Limited, P.O. Box 62, Banner Lane, Coventry, West Midlands, England CV4 9GF

FUEL and OIL: Fuel No. 2 Diesel Specific gravity converted to 60°/60°F (15°/15°C) 0.875 Fuel weight 7.28 lbs/gal (0.873 kg/l) Oil SAE 15W-30 API service classification CD Transmission and hydraulic lubricant SAE 15W-30 Front axle lubricant SAE 15W-30

ENGINE: Make Perkins Diesel Type four cylinder vertical Serial No. U839020C Crankshaft lengthwise Rated engine speed 2200 Bore and stroke 3.937" x 5.00" (100.0 mm x 127.0 mm) Compression ratio 17.3 to 1 Displacement 243 cu in (3990 ml) Starting system 12 volt Lubrication pressure Air cleaner two paper elements Oil filter one full flow cartridge Oil cooler radiator for hydraulic and transmission oil Fuel filter one paper element Muffler underhood Exhaust vertical Cooling medium temperature control thermostat

CHASSIS: Type front wheel assist Serial No. CBAD24BCXAE15999 Tread width rear 60.4" (1535 mm) to 83.9" (2130 mm) front 63.4" (1610 mm) to 75.4" (1915 mm) Wheelbase 92.5" (2350 mm) Hydraulic control system direct engine drive Transmission selective gear fixed ratio Nominal travel speeds mph (km/h) first 1.41 (2.27) second 1.85 (2.97) third 2.42 (3.89) fourth 3.17 (5.10) fifth 3.98 (6.40) sixth 5.20 (8.37) seventh 6.82 (10.98) eighth 8.94 (14.38) ninth 10.74 (17.29) tenth 14.04 (22.59) eleventh 18.42 (29.65) twelfth 24.13 (38.83) reverse 1.60 (2.57), 2.08 (3.35), 2.73 (4.40), 3.59 (5.77), 4.50 (7.24), 5.88 (9.46), 7.71 (12.41), 10.10 (16.26), 12.15 (19.55), 15.87 (25.54), 20.83 (33.52), 27.27 (43.90) Clutch single dry disc operated by foot pedal Brakes multiple wet disc hydraulically operated by two foot pedals that can be locked together Steering hydrostatic Power take-off single speed -540 rpm at 1789 engine rpm, dual speed -540 rpm at 1902 engine rpm or 1000 rpm at 2000 engine rpm Unladen tractor mass 7630 lb (3460 kg)

DRAWBAR PERFORMANCE
(UNBALLASTED—FRONT DRIVE ENGAGED)
FUEL CONSUMPTION CHARACTERISTICS

Power Hp (kW)	Drawbar pull lbs (kN)	Speed mph (km/h)	Crank- shaft speed rpm	Slip %	Fuel Consumption lb/hp.hr (kg/kW.h)	Hp.hr/gal (kW.h/l)	Temp. °F cool- ing med	Air dry bulb	Barom. inch Hg (kPa)
Maximum Power—5th (1M) Gear									
42.5 (31.7)	4090 (18.2)	3.90 (6.27)	2206	4.6	0.600 (0.365)	11.67 (2.30)	189 (87)	73 (23)	29.7 (100.5)
75% of Pull at Maximum Power—5th (1M) Gear									
33.3 (24.8)	3065 (13.6)	4.07 (6.55)	2279	3.5	0.680 (0.414)	10.30 (2.03)	189 (87)	73 (23)	29.7 (100.5)
50% of Pull at Maximum Power—5th (1M) Gear									
22.8 (17.0)	2050 (9.1)	4.17 (6.71)	2310	2.4	0.847 (0.515)	8.27 (1.63)	189 (87)	73 (23)	29.6 (100.4)
75% of Pull at Reduced Engine Speed—6th (2M) Gear									
33.3 (24.8)	3065 (13.6)	4.07 (6.55)	1744	3.5	0.545 (0.332)	12.84 (2.53)	187 (86)	75 (24)	29.6 (100.4)
50% of Pull at Reduced Engine Speed—6th (2M) Gear									
22.7 (16.9)	2040 (9.1)	4.17 (6.71)	1766	2.4	0.624 (0.380)	11.22 (2.21)	185 (85)	73 (23)	29.6 (100.4)
MAXIMUM POWER IN SELECTED GEARS									
1st (1L) Gear									
26.3 (19.6)	7680 (34.2)	1.28 (2.07)	2295	15.0	0.816 (0.496)	8.58 (1.69)	189 (87)	77 (25)	29.6 (100.4)
2nd (2L) Gear									
33.9 (25.3)	7600 (33.8)	1.67 (2.69)	2259	13.5	0.707 (0.430)	9.90 (1.95)	189 (87)	75 (24)	29.6 (100.4)
3rd (3L) Gear									
41.4 (30.9)	6945 (30.9)	2.24 (3.61)	2200	9.5	0.620 (0.377)	11.28 (2.22)	189 (87)	75 (24)	29.6 (100.4)
4th (4L) Gear									
42.5 (31.7)	5305 (23.6)	3.00 (4.83)	2169	6.1	0.600 (0.365)	11.67 (2.30)	189 (87)	75 (24)	29.7 (100.5)
5th (1M) Gear									
43.3 (32.3)	4380 (19.5)	3.71 (5.97)	2106	4.9	0.579 (0.352)	12.08 (2.38)	189 (87)	73 (23)	29.7 (100.5)
6th (2M) Gear									
43.2 (32.2)	3315 (14.7)	4.88 (7.86)	2099	3.7	0.582 (0.354)	12.03 (2.37)	189 (87)	73 (23)	29.7 (100.5)
7th (3M) Gear									
42.5 (31.7)	2455 (10.9)	6.49 (10.44)	2103	2.8	0.589 (0.359)	11.88 (2.34)	189 (87)	73 (23)	29.7 (100.5)
8th (4M) Gear									
40.9 (30.5)	1790 (8.0)	8.57 (13.79)	2106	2.1	0.610 (0.371)	11.47 (2.26)	189 (87)	72 (22)	29.7 (100.5)

REPAIRS AND ADJUSTMENTS: No repairs or adjustments.

REMARKS: All test results were determined from observed data obtained in accordance with official OECD test procedures. This tractor did not meet the manufacturer's 3 point lift capacity claim of 5732 lbs (2600 kg), optionally 6614 lbs (3000 kg) at lower link ends. The performance results on this summary were taken from a test conducted under the OECD Code 2 test procedure.

Report reissued: Supplemental sales permit for Massey Ferguson 4325 Diesel, April, 2002.

We, the undersigned, certify that this is a true summary of data from OECD Report No. 1779, Nebraska Summary 276, April 16, 2002.

Brent T. Sampson
Test Engineer

L.L. Bashford
M.F. Kocher
V.I. Adamchuck
Board of Tractor Test Engineers

TIRES AND WEIGHT

Rear Tires—No., size, ply & psi (kPa)
Front Tires—No., size, ply & psi (kPa)

Tested Without Ballast

Two 18.4R30;**,12(83)
Two 360/70R24;**,15(103)

Height of Drawbar

Static Weight with operator —Rear
—Front
—Total

19.3 in (490 mm)
4730 lb (2145 kg)
3065 lb (1390 kg)
7795 lb (3535 kg)

DRAWBAR PERFORMANCE
(UNBALLASTED - FRONT DRIVE DISENGAGED)
FUEL CONSUMPTION CHARACTERISTICS

Power Hp (kW)	Drawbar pull lbs (kN)	Speed mph (km/h)	Crank- shaft speed rpm	Slip %	Fuel Consumption		Temp.°F (°C)	Barom.	
					lb/hp.hr (kg/kW.h)	Hp.hr/gal (kW.h/l)	cool- ing med	Air dry bulb inch Hg (kPa)	
Maximum Power—6th (2M) Gear									
42.5 (31.7)	3175 (14.1)	5.02 (8.08)	2199	4.9	0.605 (0.368)	11.57 (2.28)	189 (87)	70 (21)	29.6 (100.3)
75% of Pull at Maximum Power—6th (2M) Gear									
33.4 (24.9)	2385 (10.6)	5.25 (8.45)	2278	4.0	0.690 (0.419)	10.15 (2.00)	189 (87)	70 (21)	29.6 (100.3)
50% of Pull at Maximum Power—6th (2M) Gear									
23.0 (17.2)	1605 (7.1)	5.37 (8.65)	2313	3.4	0.865 (0.526)	8.10 (1.60)	189 (87)	68 (20)	29.6 (100.3)
75% of Pull at Reduced Engine Speed—7th (3M) Gear									
33.4 (24.9)	2390 (10.6)	5.24 (8.43)	1733	4.0	0.549 (0.334)	12.74 (2.51)	187 (86)	66 (19)	29.6 (100.3)
50% of Pull at Reduced Engine Speed—7th (3M) Gear									
22.9 (17.1)	1595 (7.1)	5.38 (8.65)	1765	3.4	0.641 (0.390)	10.91 (2.15)	187 (86)	66 (19)	29.6 (100.3)

MAXIMUM POWER IN SELECTED GEARS

1st (1L) Gear									
20.9 (15.6)	6090 (27.1)	1.29 (2.07)	2313	15.0	0.945 (0.575)	7.41 (1.46)	189 (87)	68 (20)	29.6 (100.3)
2nd (2L) Gear									
27.4 (20.4)	5960 (26.5)	1.72 (2.77)	2299	12.1	0.783 (0.476)	8.94 (1.76)	189 (87)	68 (20)	29.6 (100.3)
3rd (3L) Gear									
34.1 (25.4)	5720 (25.5)	2.24 (3.60)	2269	11.8	0.692 (0.421)	10.12 (1.99)	189 (87)	66 (19)	29.6 (100.3)
4th (4L) Gear									
42.4 (31.6)	5420 (24.1)	2.93 (4.71)	2199	9.0	0.618 (0.376)	11.33 (2.23)	189 (87)	66 (19)	29.6 (100.4)
5th (1M) Gear									
43.0 (32.1)	4450 (19.8)	3.62 (5.82)	2109	6.6	0.589 (0.358)	11.89 (2.34)	189 (87)	70 (21)	29.6 (100.3)
6th (2M) Gear									
43.2 (32.2)	3375 (15.0)	4.80 (7.72)	2104	5.0	0.584 (0.355)	11.99 (2.36)	189 (87)	70 (21)	29.6 (100.3)
7th (3M) Gear									
42.6 (31.8)	2515 (11.2)	6.35 (10.22)	2104	4.1	0.599 (0.364)	11.68 (2.30)	189 (87)	68 (20)	29.6 (100.3)
8th (4M) Gear									
40.7 (30.4)	1820 (8.1)	8.39 (13.51)	2110	3.7	0.621 (0.378)	11.27 (2.22)	187 (86)	66 (19)	29.6 (100.4)
9th (1H) Gear									
41.8 (31.2)	1560 (6.9)	10.05 (16.17)	2095	3.3	0.610 (0.371)	11.47 (2.26)	189 (87)	66 (19)	29.6 (100.3)

TRACTOR SOUND LEVEL WITH CAB	Front Wheel Drive	
	Disengaged dB(A)	Engaged dB(A)
Maximum sound level in 5th(1M) gear	84.0	84.0
Bystander in 12th(4H) gear	83.0	--

THREE POINT HITCH PERFORMANCE (OECD Static Test)

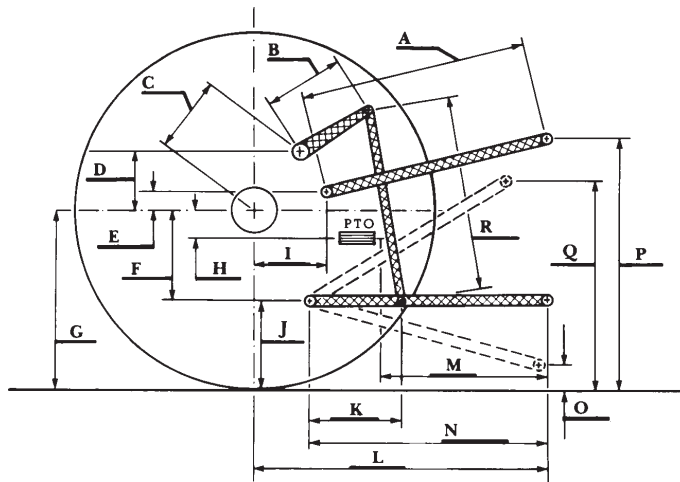
CATEGORY: II

QuickAttach: None

Maximum Force Exerted Through Whole Range: 3665 lbs (16.3 kN)(at the frame)
 4340 lbs (19.3 kN)(at the hitch points)

- i) Opening pressure of relief valve: NA
- Sustained pressure of the open relief valve: 3045 psi (210 bar)
- ii) Pump delivery rate at minimum pressure: 10.2 GPM (38.6 l/min)
- iii) Pump delivery rate at maximum
 - hydraulic power: 9.6 GPM (36.3 l/min)
 - Delivery pressure: 2755 psi (190 bar)
 - Power: 15.4 HP (11.5 kW)

HITCH DIMENSIONS AS TESTED - NO LOAD



	inch	mm
A	32.0	815
B	12.2	310
C	12.0	304
D	9.2	233
E	8.1	205
F	8.3	212
G	28.3	720
H	5.4	136
I	7.3	186
J	20.0	508
K	26.6	675
L	38.1	968
M	25.0	635
N	39.4	1000
O	7.8	197
P	44.0	1118
Q	33.3	845
R	30.7	780