



## HYDRAULIC PERFORMANCE

CATEGORY: II

Quick attach: None

OECD Static test

Maximum force exerted through whole range:	3591 lbs	(16.0 kN)
i) Sustained pressure of the open relief valve:	2933 psi	(202 bar)
ii) Pump delivery rate at minimum pressure and rated engine speed:	11.5 GPM	(43.4 l/min)
iii) Pump delivery rate at maximum hydraulic power:	10.8 GPM	(40.7 l/min)
Delivery pressure:	2540 psi	(175 bar)
Power:	15.9 HP	(11.9 kW)

## THREE POINT HITCH PERFORMANCE

Observed maximum pressure psi.(bar)	2796(193)
Location:	remote outlet
Hydraulic oil temperature: °F(°C)	185(85)
Location:	hydraulic sump
Category:	II
Quick attach:	none

### SAE Static Test—System pressure 2480 psi (171 Bar)

Hitch point distance to ground level in.(mm)	8.0(203)	15.0(381)	22.0(559)	29.0(737)	36.0(914)
Lift force on frame lb	6633	5486	5067	4734	3978
" " " " " " (kN)	(29.5)	(24.4)	(22.5)	(21.1)	(17.7)

**REPAIRS AND ADJUSTMENTS:** No repairs or adjustments.

**NOTE 1.** The manufacturer declares that the average time between active regenerations is 50 hours.

**NOTE 2:** The performance data on this report applies to tractors with chassis serial numbers that end with EXXXXXXX and higher.

**REMARKS:** All test results were determined from observed data obtained in accordance with official OECD, SAE and Nebraska test procedures.

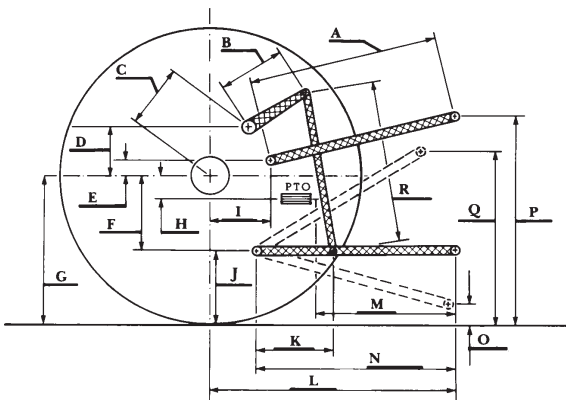
We, the undersigned, certify that this is a true and correct report of official Tractor Test No. **2138**, May 16, 2016.

Roger M. Hoy  
Director

M.F. Kocher  
J.D. Luck  
P.J. Jasa  
Board of Tractor Test Engineers

	SAE Test		OECD Test	
	inch	mm	inch	mm
A	23.3	590	23.5	597
B	11.0	280	11.0	280
C	14.0	355	14.0	355
D	12.2	310	12.2	310
E	11.1	282	11.1	282
F	6.5	166	6.5	166
G	26.4	670	26.4	670
H	0.2	4	0.2	4
I	15.1	384	15.1	384
J	19.9	504	19.9	504
K	16.1	409	16.1	409
L	38.8	985	38.8	985
M	22.0	559	22.0	559
N	32.5	825	32.5	825
O	8.0	203	8.0	203
P	38.9	987	43.9	1114
Q	32.5	825	32.5	825
R	21.2	540	21.2	540

**HITCH DIMENSIONS AS TESTED - NO LOAD**



**John Deere 5065E Diesel**