

SUMMARY OF OECD TEST 2974-NEBRASKA SUMMARY 1097

CASE IH MAXXUM 150 DIESEL

16 SPEED

POWER TAKE-OFF PERFORMANCE

Power HP (kW)	Crank shaft speed rpm	Diesel Consumption		D.E.F. Consumption		Mean Atmospheric Conditions
		Gal/hr (l/h)	lb/hp.hr (kg/kW.h)	Hp.hr/gal (kW.h/l)	Gal/hr (l/h)	
MAXIMUM POWER AND FUEL CONSUMPTION						
Rated Engine Speed—(PTO speed—1091 rpm)						
126.2 (94.1)	2100	7.20 (27.26)	0.398 (0.242)	17.51 (3.45)	0.46 (1.75)	
Standard Power Take-off Speed (1000 rpm)						
140.1 (104.5)	1924	7.53 (28.50)	0.374 (0.228)	18.63 (3.67)	0.48 (1.83)	
Maximum Power (1 hour)						
141.9 (105.8)	1900	7.57 (28.65)	0.372 (0.226)	18.73 (3.69)	0.48 (1.83)	

VARYING POWER AND FUEL CONSUMPTION

126.2 (94.1)	2100	7.20 (27.26)	0.398 (0.242)	17.51 (3.45)	0.46 (1.75)	Air temperature
108.0 (80.5)	2113	6.39 (24.17)	0.413 (0.251)	16.90 (3.33)	0.37 (1.40)	72°F (22°C)
81.9 (61.1)	2138	5.27 (19.96)	0.449 (0.273)	15.53 (3.06)	0.28 (1.07)	Relative humidity
55.1 (41.1)	2155	4.16 (15.76)	0.528 (0.321)	13.20 (2.60)	0.22 (0.84)	53%
27.8 (20.7)	2176	3.06 (11.57)	0.767 (0.467)	9.09 (1.79)	0.17 (0.64)	Barometer
---	2191	2.06 (7.78)	---	---	0.08 (0.31)	29.1" Hg (98.5 kPa)

Maximum torque - 441 lb.-ft. (598 Nm) at 1400 rpm
 Maximum torque rise - 39.7%
 Torque rise at 1700 engine rpm - 35%
 Power increase at 1900 engine rpm - 11%

DRAWBAR PERFORMANCE (Unballasted - Front Drive Engaged) FUEL CONSUMPTION CHARACTERISTICS

Power Hp (kW)	Drawbar pull lbs (kN)	Speed mph (km/h)	Crank- shaft speed rpm	Slip %	Fuel Consumption lb/hp.hr (kg/kW.h)	Temp. °F (°C) cool- ing med	Air dry bulb	Barom. inch Hg (kPa)
Power at Rated Engine Speed—9th(L8) Gear								
97.1 (72.4)	6090 (27.1)	5.98 (9.62)	2103	2.9	0.505 (0.307)	13.81 (2.72)	181 (83)	61 (16)
75% of Pull at Rated Engine Speed—9th(L8) Gear								
74.0 (55.2)	4565 (20.3)	6.08 (9.79)	2128	2.2	0.539 (0.328)	12.94 (2.55)	183 (84)	61 (16)
50% of Pull at Rated Engine Speed—9th(L8) Gear								
50.7 (37.8)	3055 (13.6)	6.22 (10.00)	2157	1.5	0.558 (0.339)	12.49 (2.46)	183 (84)	61 (16)
75% of Pull at Reduced Engine Speed—10th(H2) Gear								
74.7 (55.7)	4585 (20.4)	6.11 (9.83)	1913	2.1	0.534 (0.325)	13.05 (2.57)	181 (83)	61 (16)
50% of Pull at Reduced Engine Speed—10th(H2) Gear								
50.3 (37.5)	3035 (13.5)	6.21 (10.00)	1941	1.5	0.560 (0.341)	12.44 (2.45)	181 (83)	61 (16)

Location of tests: Istituto per le Macchine Agricole e Movimento Terra 73, Strada delle Cacce 10135 Torino Italy

Dates of tests: April to May, 2016.

Manufacturer: CNH Europe Holding S.A. 24, Boulevard Royal L-2449 Luxembourg

CONSUMABLE FLUIDS: Fuel No. 2 Diesel Specific gravity converted to 60°/60°F (15°/15°C) 0.837 Fuel weight 6.97 lbs/gal (0.835 kg/l) Diesel Exhaust Fluid (DEF) 32% aqueous urea solution DEF weight 9.08 lbs/gal (1.091 kg/l) Oil SAE 10W30 API service classification CJ-4 Transmission and hydraulic lubricant Akcela Nexplore fluid Front axle lubricant Akcela Nexplore fluid

ENGINE: Make FPT Diesel Type six cylinder vertical with turbocharger, air to air intercooler and SCR (selective catalyst reduction) exhaust treatment Serial No. 882721 Crankshaft lengthwise Rated engine speed 2100 Bore and stroke 4.094" x 5.197" (104.0 mm x 132.0 mm) Compression ratio 17.5 to 1 Displacement 410 cu in (6728 ml) Starting system 12 volt Lubrication pressure Air cleaner two paper elements and aspirator Oil filter one full flow cartridge Oil cooler engine coolant heat exchanger for crankcase oil, radiator for hydraulic and transmission oil Fuel filter one paper element Muffler underhood Exhaust vertical Cooling medium temperature control thermostat and variable speed fan

CHASSIS: Type front wheel assist Serial No. ZFEE01344 Tread width rear 56.3" (1430 mm) to 84.0" (2134 mm) front 61.4" (1560 mm) to 88.8" (2256 mm) Wheelbase 104.0" (2642 mm) Hydraulic control system direct engine drive Transmission selective gear fixed ratio with partial (8) range operator controlled powershift Nominal travel speeds mph (km/h) first 1.44 (2.31) second 1.76 (2.83) third 2.14 (3.45) fourth 2.63 (4.23) fifth 3.37 (5.42) sixth 4.13 (6.65) seventh 5.03 (8.10) eighth 5.60 (9.02) ninth 6.18 (9.94) tenth 6.88 (11.07) eleventh 8.37 (13.47) twelfth 10.27 (16.53) thirteenth 13.17 (21.19) fourteenth 16.14 (25.98) fifteenth 19.68 (31.68) sixteenth 25.27 (40.67) reverse 1.43 (2.28), 1.74 (2.80), 2.12 (3.41), 2.60 (4.18), 3.33 (5.36), 4.08 (6.57), 4.97 (8.00), 5.54 (8.92), 6.20 (9.97), 6.80 (10.94), 8.28 (13.32), 10.16 (16.34), 13.01 (20.94), 15.98 (25.71), 19.44 (31.28), 24.97 (40.19)

DRAWBAR PERFORMANCE
(Unballasted - Front Drive Engaged)
MAXIMUM POWER IN SELECTED GEARS

Power Hp (kW)	Drawbar pull lbs (kN)	Speed mph (km/h)	Crank- shaft speed rpm	Slip %	Fuel Consumption lb/hp.hr (kg/kW.h)	Consumption Hp.hr/gal (kW.h/l)	Temp. ^o F(°C) cool- ing med	Air dry bulb	Barom. inch Hg (kPa)
4th(L4) Gear									
62.4 (46.5)	9980 (44.4)	2.34 (3.77)	2139	13.5	0.686 (0.417)	10.15 (2.00)	182 (83)	57 (14)	29.0 (98.2)
5th(L5) Gear									
79.7 (59.4)	9755 (43.4)	3.06 (4.93)	2124	10.7	0.592 (0.360)	11.78 (2.32)	183 (84)	59 (15)	29.0 (98.2)
6th(L6) Gear									
96.4 (71.9)	9735 (43.3)	3.71 (5.98)	2093	10.1	0.521 (0.317)	13.35 (2.63)	183 (84)	59 (15)	29.0 (98.2)
7th(L7) Gear									
103.5 (77.2)	9150 (40.7)	4.24 (6.83)	1901	6.8	0.509 (0.310)	13.70 (2.70)	182 (83)	61 (16)	29.0 (98.2)
8th(H1) Gear									
107.1 (79.9)	8315 (37.0)	4.83 (7.77)	1902	4.6	0.492 (0.299)	14.16 (2.79)	183 (84)	61 (16)	29.0 (98.2)
9th(L8) Gear									
106.1 (79.1)	7444 (33.1)	5.34 (8.60)	1899	3.9	0.497 (0.302)	14.02 (2.76)	183 (84)	61 (16)	29.0 (98.2)
10th(H2) Gear									
108.0 (80.5)	6720 (29.9)	6.02 (9.69)	1908	3.3	0.488 (0.297)	14.26 (2.81)	183 (84)	61 (16)	29.0 (98.2)
11th(H3) Gear									
103.5 (77.2)	5285 (23.5)	7.34 (11.82)	1898	2.5	0.509 (0.310)	13.69 (2.70)	183 (84)	61 (16)	29.0 (98.2)
12th(H4) Gear									
103.3 (77.0)	4270 (19.0)	9.07 (14.59)	1900	2.0	0.510 (0.310)	13.65 (2.69)	183 (84)	61 (16)	29.0 (98.2)

Clutch wet disc hydraulically actuated by foot pedal
Brakes wet disc hydraulically actuated by two foot pedals that can be locked together
Steering hydrostatic
Power take-off 540 rpm at 1969 engine rpm or 1000 rpm at 1924 engine rpm
Unladen tractor mass 12300 lb (5580 kg)

REPAIRS AND ADJUSTMENTS: No repairs or adjustments.

REMARKS: All test results were determined from observed data obtained in accordance with official OECD test procedures. This tractor fell 2.4% short of meeting the manufacturer's remote hydraulic flow claim of 21.1 GPM (80 l/min) with FD (fixed disp pump), 14.1% short of the 29.8 GPM (113 l/min) flow claim with the CCLS hydraulic system and 1.6% short of 25.1 GPM (95 l/min) flow claim through a single outlet pair with the CCLS hydraulic system. The performance figures on this summary were taken from a test conducted under the OECD Code 2 test procedure.

We, the undersigned, certify that this is a true summary of data from OECD Report No. **2974**, Nebraska Summary 1097, June 12, 2017.

Roger M. Hoy
 Director

M.F. Kocher
 P.J. Jasa
 J.D. Luck
 Board of Tractor Test Engineers

TRACTOR SOUND LEVEL WITH CAB	Front Wheel Drive	
	Engaged dB(A)	Disengaged dB(A)
At no load in 7th(L7) gear	73.9	73.3
Bystander in 15th(H7) gear	--	88.3

TIRES AND WEIGHT

Rear tires - No., size, ply & psi (kPa)
Front tires - No., size, ply & psi (kPa)
Height of Drawbar
Static Weight with operator- Rear
 - Front
 - Total

Tested Without Ballast

Two 650/65R38; **;9 (60)
 Two 540/65R28; **;9 (60)
 20.3 in (515 mm)
 7650 lb (3470 kg)
 4815 lb (2185 kg)
 12465 lb (5655 kg)

HYDRAULIC PERFORMANCE

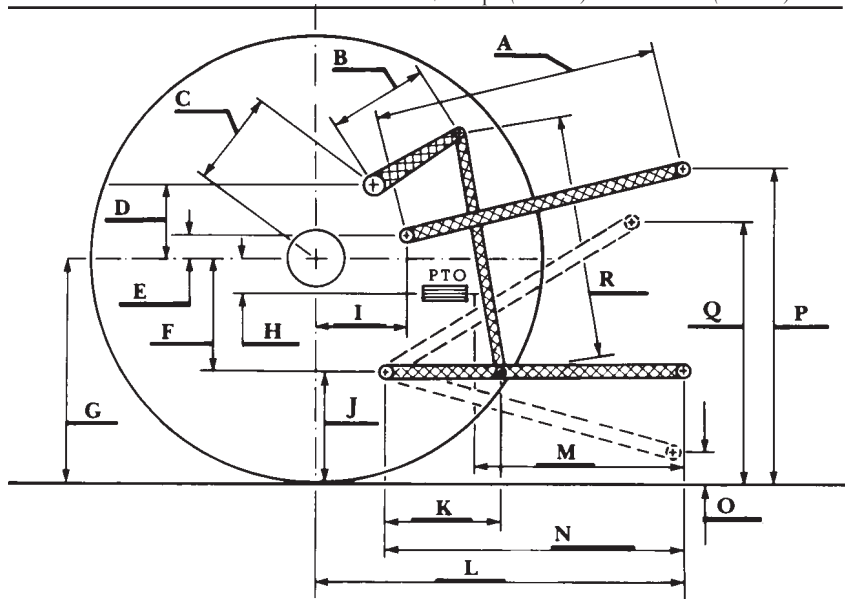
CATEGORY: III

Quick Attach: None

OECD Static test

Maximum force exerted through whole range: 6990 lbs (31.1 kN) Lift cylinders 2x80 mm
8945 lbs (39.8 kN) Lift cylinders 2x90 mm

- i) Sustained pressure of the open relief valve: 3100 psi (214 bar)
FD - Fixed disp pump CCLS Hyd system
two outlet sets combined
- ii) Pump delivery rate at minimum pressure: 20.6 GPM (78.0 l/min) 25.6 GPM (97.0 l/min)
- iii) Pump delivery rate at maximum
hydraulic power: 16.2 GPM (61.2 l/min) 24.2 GPM (91.7 l/min)
Delivery pressure: 2685 psi (185 bar) 2755 psi (190 bar)
Power: 25.4 HP (18.9 kW) 38.9 HP (29.0 kW)
single outlet set
- ii) Pump delivery rate at minimum pressure: 20.2 GPM (76.5 l/min) 24.7 GPM (93.3 l/min)
- iii) Pump delivery rate at maximum
hydraulic power: 15.5 GPM (58.6 l/min) 23.3 GPM (88.3 l/min)
Delivery pressure: 2685 psi (185 bar) 2755 psi (190 bar)
Power: 24.3 Hp (18.1 kW) 37.5 HP (28.0 kW)



HITCH DIMENSIONS AS TESTED—NO LOAD

	inch	mm
A	27.0	685
B	12.2	310
C	15.6	395
D	14.6	370
E	7.9	200
F	9.2	235
G	34.4	875
H	3.0	75
I	16.9	430
J	25.2	640
K	19.9	505
L	45.0	1142
M	23.1	587
N	38.3	974
O	7.9	200
P	52.2	1325
Q	34.3	870
R	33.3	845